

# HILDALE SHOPPING CENTER PUD-GDP-SIP AMENDMENT #1

Date: 09/21/05

Site Location Map

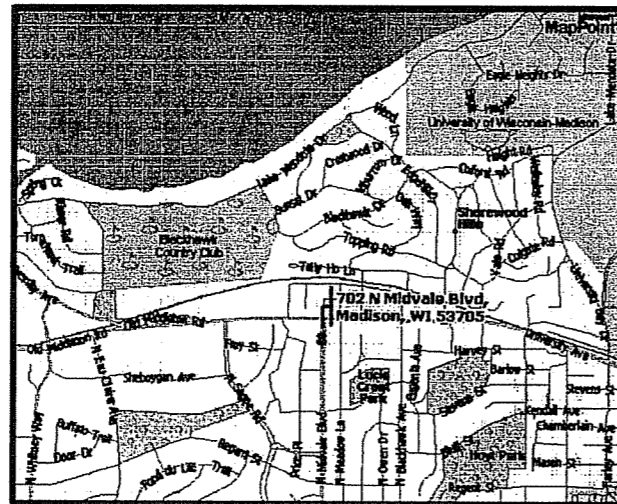
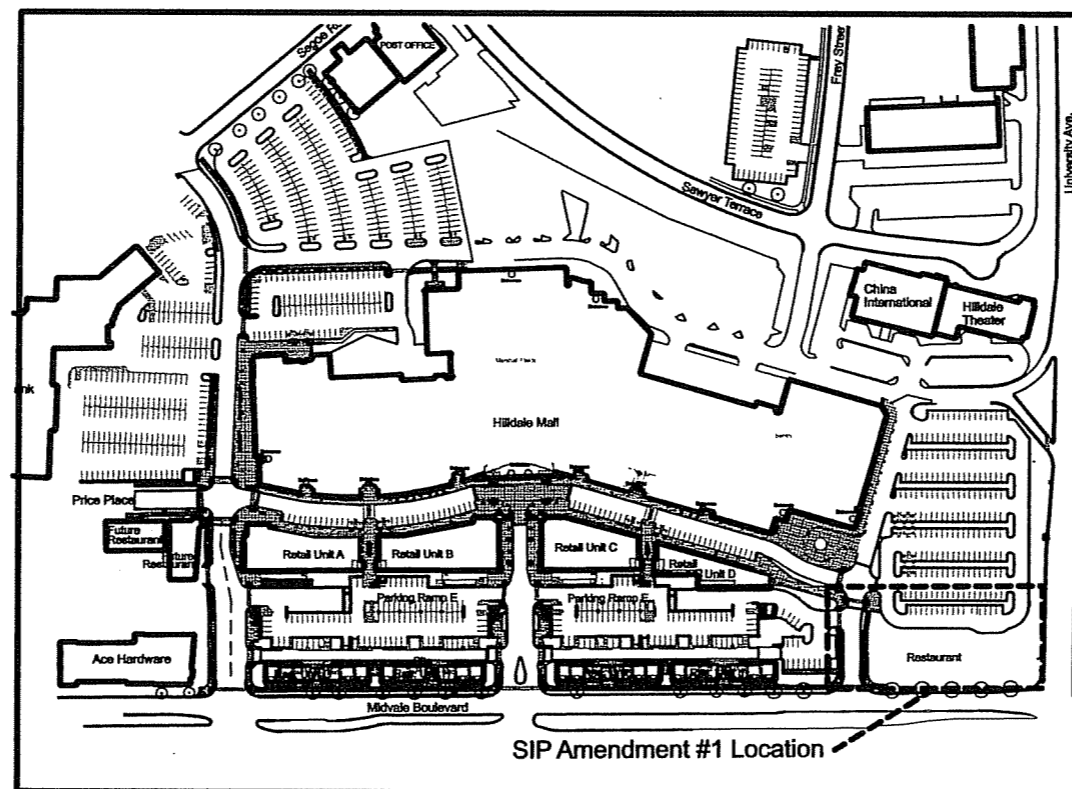


Table of Contents

Sheet No.	Sheet Title
EX100	Original PUD-GDP-SIP Site Plan
EX101	PUD-GDP-SIP Amendment #1 Overall Site Plan
L 101R	Layout Plan
L 201R	Planting Plan
L 301R	Site Details
S 100R	Site Plan
P 100R	Parking Lot Plan
E 100R	Site Lighting Plan
E 101R	Site Lighting Distribution Plan
U 100R	Site Utility Plan
G 100R	Grading Plan
	Signage Elevation
	Building Floor Plan
	Building North and West Elevations
	Building South and East Elevations

Amendment #1 Location



**HILDALE SHOPPING CENTER**  
**PUD-GDP-SIP Amendment #1**  
 702 N. MIDVALE BOULEVARD  
 MADISON, WI  
 HILDALE BUILDING COMPANY LLC

Sheet Title:

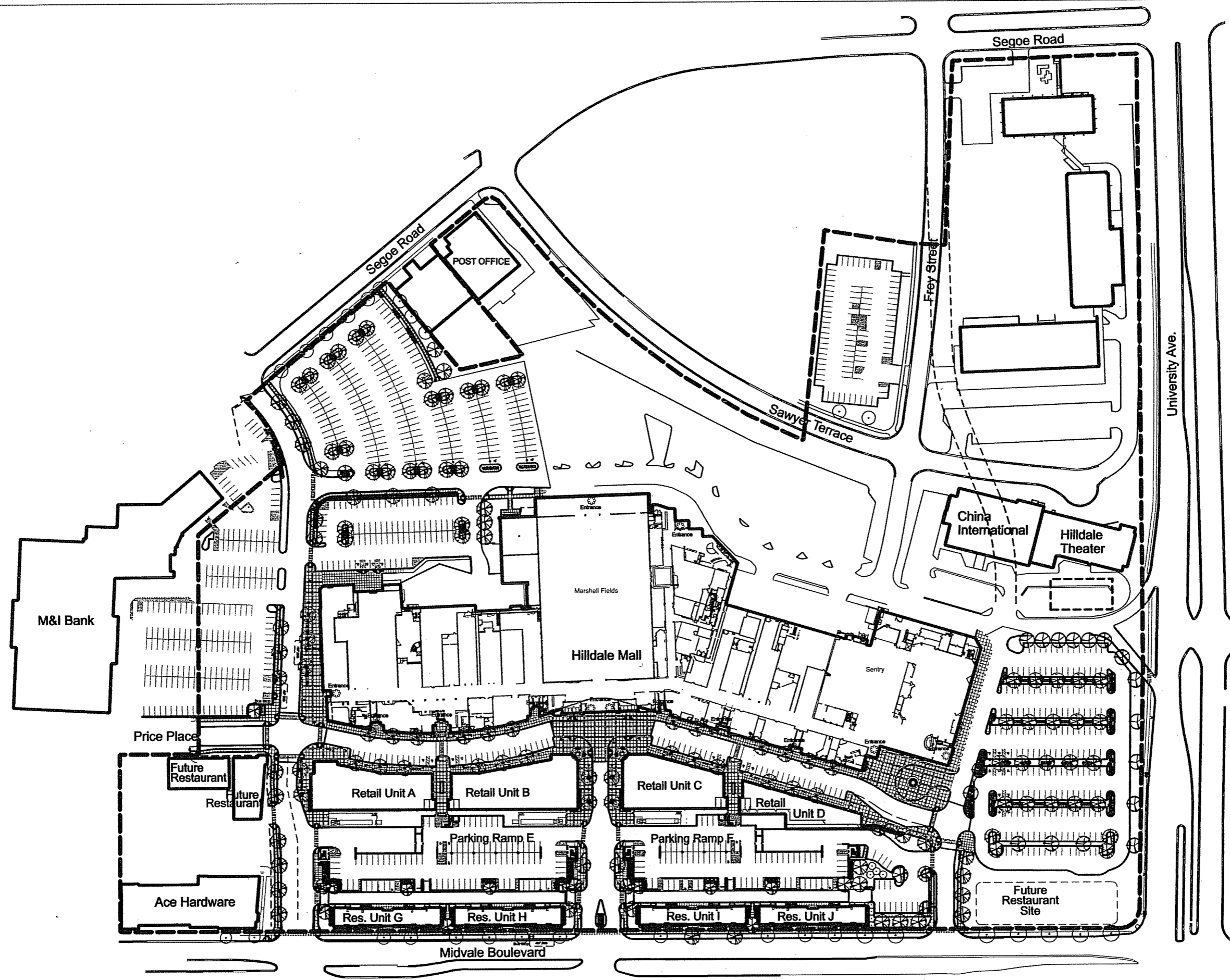
Submission Schedule

Revision	Date	Description	By

Project Number:	Drawn By:
09-21-05	MS
Date Issued:	Reviewed By:
09-21-05	KS

Sheet Number:

TS



Reserved space for potential future ped-bike overpass of University Avenue for inter-modal ped-bike connections to the Shorewood Shopping Center, Blackhawk Bicycle Trail, and future rail transit. The specific location, design details, configuration and size subject to further study and approval.

Scale 1"=60'



GDP Boundary

**DESIGN INC**  
**LANDSCAPE ARCHITECTS**  
 303 S PATTERSON  
 SUITE 201  
 MADISON, WI 53703  
 PHONE 608 271-3600  
 FAX 608 271-8500  
 info@design-inc.com  
 www.design-inc.com

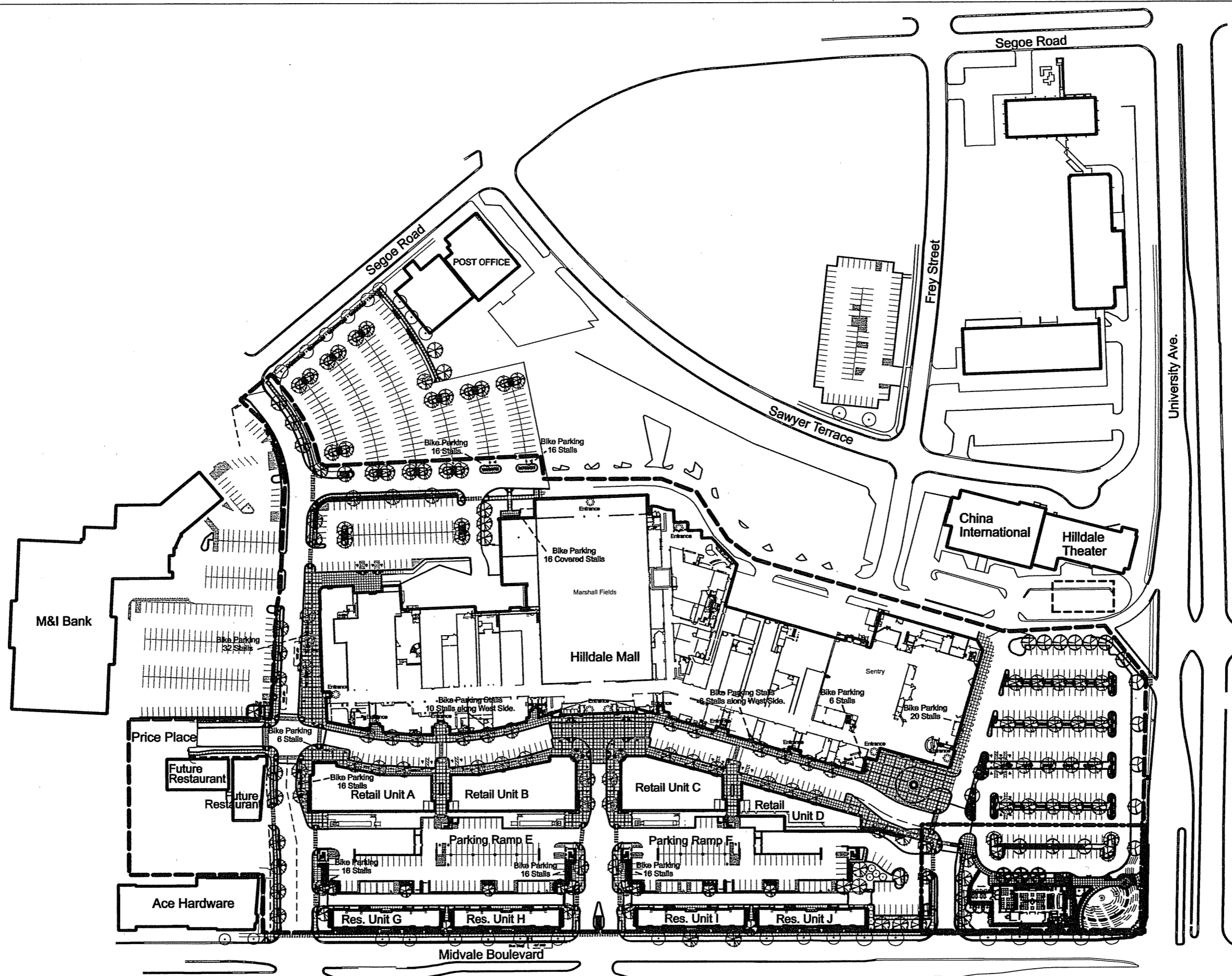
**HILLDALE SHOPPING CENTER**  
 702 N. MIDVALE BOULEVARD  
 MADISON, WI  
 HILLDALE BUILDING COMPANY LLC

Sheet Title:  
 General Development Plan

Rev.	Date	Description	By

Project Number: MS  
 Date Issued: 05-02-05  
 Drawn By: KS  
 Reviewed By:

Sheet Number:  
**EX100**



DESIGN INC  
 LANDSCAPE ARCHITECTS  
 302 E PATTERSON SUITE 202E  
 MADISON, WI 53703  
 FAX: 608 277-6300  
 info@kd-i.com  
 www.kd-i.com

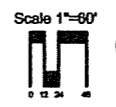
**HILLDALE SHOPPING CENTER  
 PUD-GDP-SIP Amendment #1**  
 702 N. MIDVALE BOULEVARD  
 MADISON, WI  
 HILLDALE BUILDING COMPANY LLC

Sheet Title:  
 SIP Overall Site Diagram

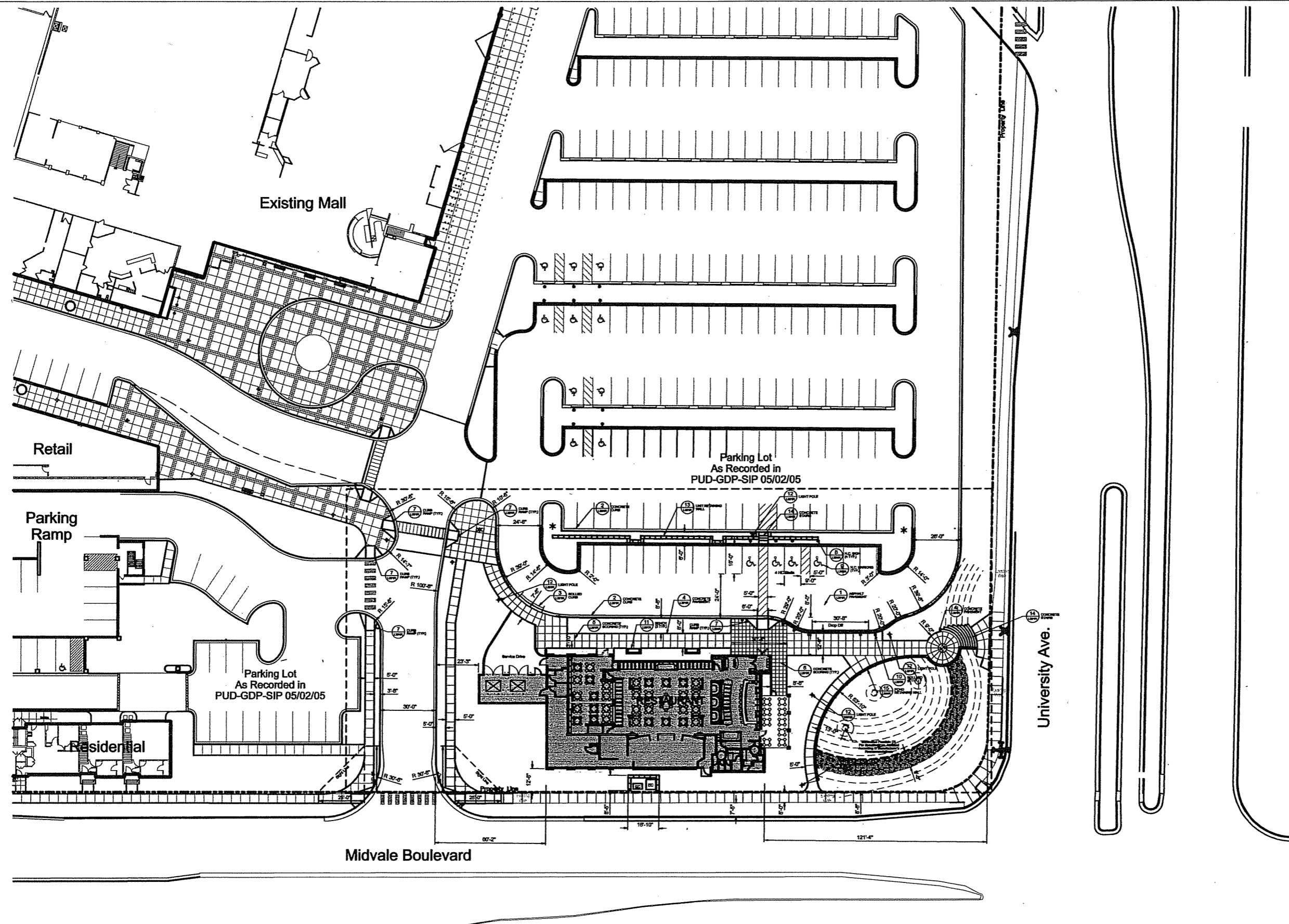
Rev.	Date	Description	By

Project Number: MS  
 Drawn By:  
 Date Issued: 09-21-05  
 Reviewed By: KS

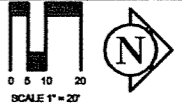
Sheet Number:  
**EX101**



SIP Boundary  
 SIP Amendment #1 Boundary



Site Layout Plan  
 Hilldale PUD-GDP-SIP Amendment #1  
 Restaurant / Water Feature



DESIGN INC  
 LANDSCAPE  
 ARCHITECTS  
 303 E PATTERSON  
 SUITE 101 ONE  
 MADISON, WI 53703  
 PHONE 608 271-5800  
 FAX 608 271-5805  
 INFO@DESIGN-INC.COM  
 WWW.DESIGN-INC.COM

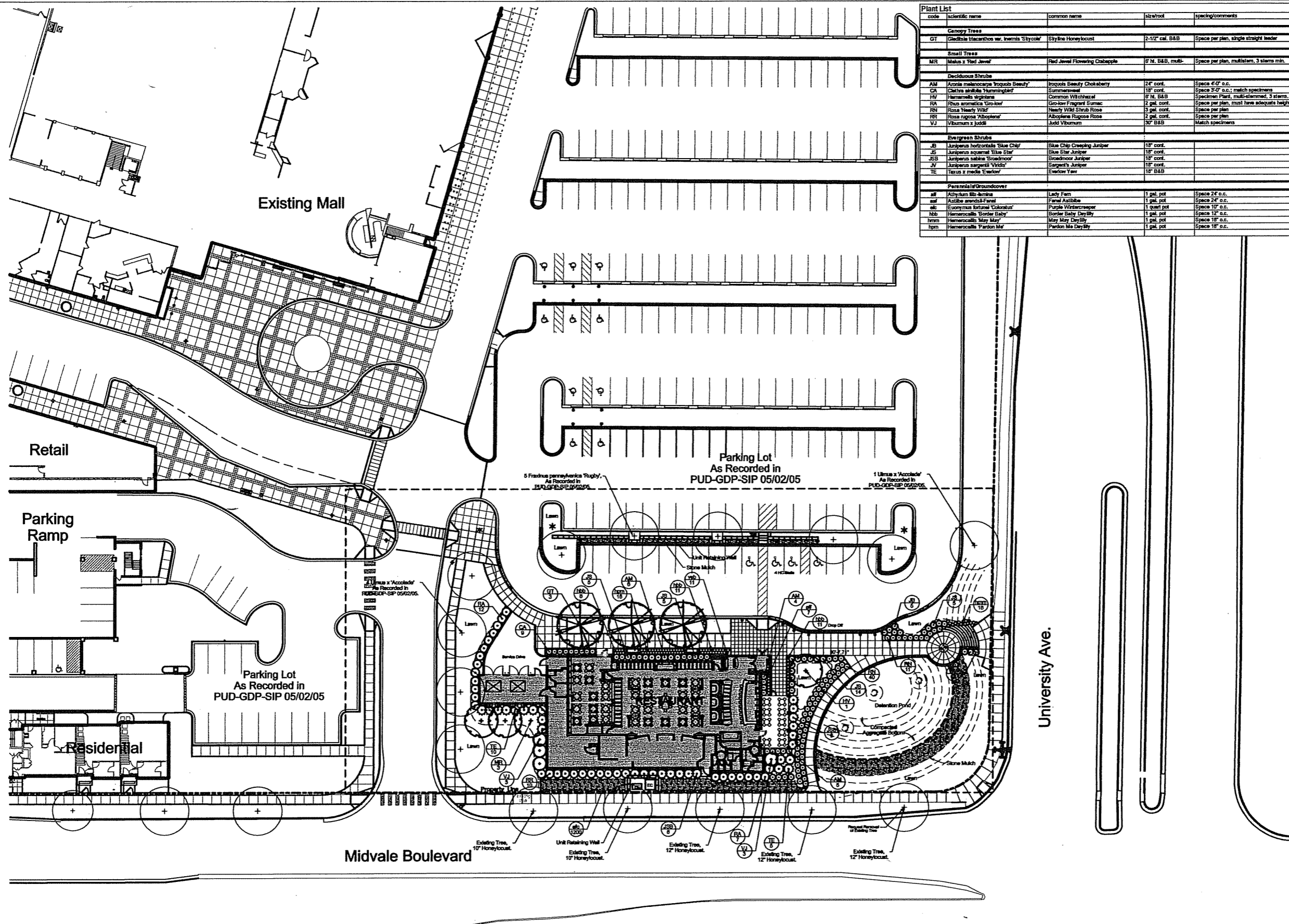
HILLDALE SHOPPING CENTER  
 PUD-GDP-SIP Amendment #1  
 702 N. MIDVALE BOULEVARD  
 MADISON, WI  
 HILLDALE BUILDING COMPANY LLC

Sheet Title:  
 LAYOUT PLAN

Revision:	Date:	Description:	By:

Project Number:	Drawn By:
	MS
Date Issued:	Reviewed By:
09-21-05	KS

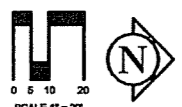
Sheet Number:  
**L 101R**



code	scientific name	common name	size/height	spacing/comments
<b>Canopy Trees</b>				
GT	<i>Gleditsia thurberiana</i> var. <i>inermis</i> 'Sycol'	Sycamore Honeylocust	2-1/2" cal. B&B	Space per plan, single straight leader
<b>Small Trees</b>				
MR	<i>Malus x 'Red Jewel'</i>	Red Jewel Flowering Crabapple	6" H. B&B, multi-	Space per plan, multistem, 3 stems min.
<b>Deciduous Shrubs</b>				
AM	<i>Amorpha melanocarpa</i> 'Inquisit Beady'	Inquisit Beady Chickadee	2' cont.	Space 4'0" o.c.
CA	<i>Celastrus alabamica</i> 'Hummingbird'	Summerwax	18" cont.	Space 3'0" o.c.; match specimens
HV	<i>Hieracium virginicum</i>	Common Witchhazel	6" H. B&B	Specimen Plant, multi-stemmed, 3 stems.
RA	<i>Ribes aromatica</i> 'Giro-low'	Giro-low Fragrant Spice	2 gal. cont.	Space per plan, must have adequate height
RW	<i>Rosa 'Newly Wed'</i>	Heavily Wild Hybrid Rose	3 gal. cont.	Space per plan
RR	<i>Rosa rugosa</i> 'Alboplena'	Alboplena Rugosa Rose	2 gal. cont.	Space per plan
VJ	<i>Viburnum x Juddii</i>	Judd Viburnum	30" B&B	Match specimens
<b>Evergreen Shrubs</b>				
JB	<i>Juniperus horizontalis</i> 'Blue Chip'	Blue Chip Creeping Juniper	18" cont.	
JS	<i>Juniperus squamata</i> 'Blue Star'	Blue Star Juniper	18" cont.	
JSB	<i>Juniperus sabina</i> 'Broadmoor'	Broadmoor Juniper	18" cont.	
JV	<i>Juniperus sargentii</i> 'Victoria'	Sargent's Juniper	18" cont.	
TE	<i>Taxus x media</i> 'Ewelov'	Ewelov Yew	18" B&B	
<b>Perennials/Groundcover</b>				
LF	<i>Athyrium filix-femina</i>	Lady Fern	1 gal. pot	Space 2'6" o.c.
RAF	<i>Astilbe spicata</i> 'Fanal'	Fanal Astilbe	1 gal. pot	Space 2'6" o.c.
SL	<i>Eucryphia forsteri</i> 'Colossal'	Purple Wintercreeper	1 1/2 gal. pot	Space 18" o.c.
MB	<i>Hemerocallis 'Bieder Baby'</i>	Bieder Baby Daylily	1 gal. pot	Space 12" o.c.
hmm	<i>Hemerocallis 'May May'</i>	May May Daylily	1 gal. pot	Space 18" o.c.
hgm	<i>Hemerocallis 'Pardon Me'</i>	Pardon Me Daylily	1 gal. pot	Space 18" o.c.

**Site Planting Plan**  
**Hilldale PUD-GDP-SIP Amendment #1**  
**Restaurant / Water Feature**

----- Extent of Amendment #1



**DESIGN INC**  
**LANDSCAPE ARCHITECTS**  
 303 S PATTERSON SUITE ONE  
 MADISON, WI 53702  
 PHONE 608 271-3600  
 FAX 608 271-5030  
 info@df-ia.com  
 www.df-ia.com

**HILLDALE SHOPPING CENTER**  
**PUD-GDP-SIP Amendment #1**  
 702 N. MIDVALE BOULEVARD  
 MADISON, WI  
 HILLDALE BUILDING COMPANY LLC

Sheet Title  
**PLANTING PLAN**

Revision	Date	Description	By

Project Number:	Drawn By:
	MS
Date Issued:	Reviewed By:
09-21-05	KS

Sheet Number:  
**L 201R**



POST OFFICE

\*PARKING LOTS A THRU L ARE AVAILABLE FOR ALL SITE DEVELOPMENTS INCLUDING SIP AMENDMENT AREA

PARKING LOT SUMMARY			
LOT	TOTAL STALLS	ACCESSIBLE	VAN ACCESSIBLE
A	207	14	2
B	23	-	2
C	30	-	4
D	28	-	4
E	252	7	1
F	414	9	1
G	74	-	-
H	199	-	9
I	85	-	4
J	202	-	8
K	242	7	-
L	72	2	-
TOTALS	1828	39	35

PARKING LOT PLAN SITE INFO. - NEW CONSTRUCTION	
SITE ADDRESS -	702 N. MIDVALE BLVD.
SITE ACREAGE -	JFA
BUILDING HEIGHT -	RESIDENTIAL - 28' - 42'
DILHR CONST. TYPE -	RESIDENTIAL - 5A
TOTAL SQUARE FOOTAGE -	RESIDENTIAL - 62,490
USE OF PROPERTY -	JFA
GROSS SF - OFFICES	0
- RETAIL	50,250
EMPLOYEES - WAREHOUSE	0
- PRODUCTION	0
RESTAURANT CAPACITY -	JFA
BICYCLE STALLS -	KSD
PARKING STALLS:	REMAINING NEW
SMALL	379 1349
LARGE	9 70
ACCESS	388 1419
TOTAL	



810 West Wingers Drive  
Madison, WI 53715  
608 251-4843  
608 251-8653 FAX  
www.strand.com

**HILLDALE SHOPPING CENTER**  
702 N. MIDVALE BOULEVARD  
MADISON, WI

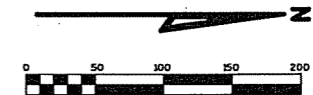
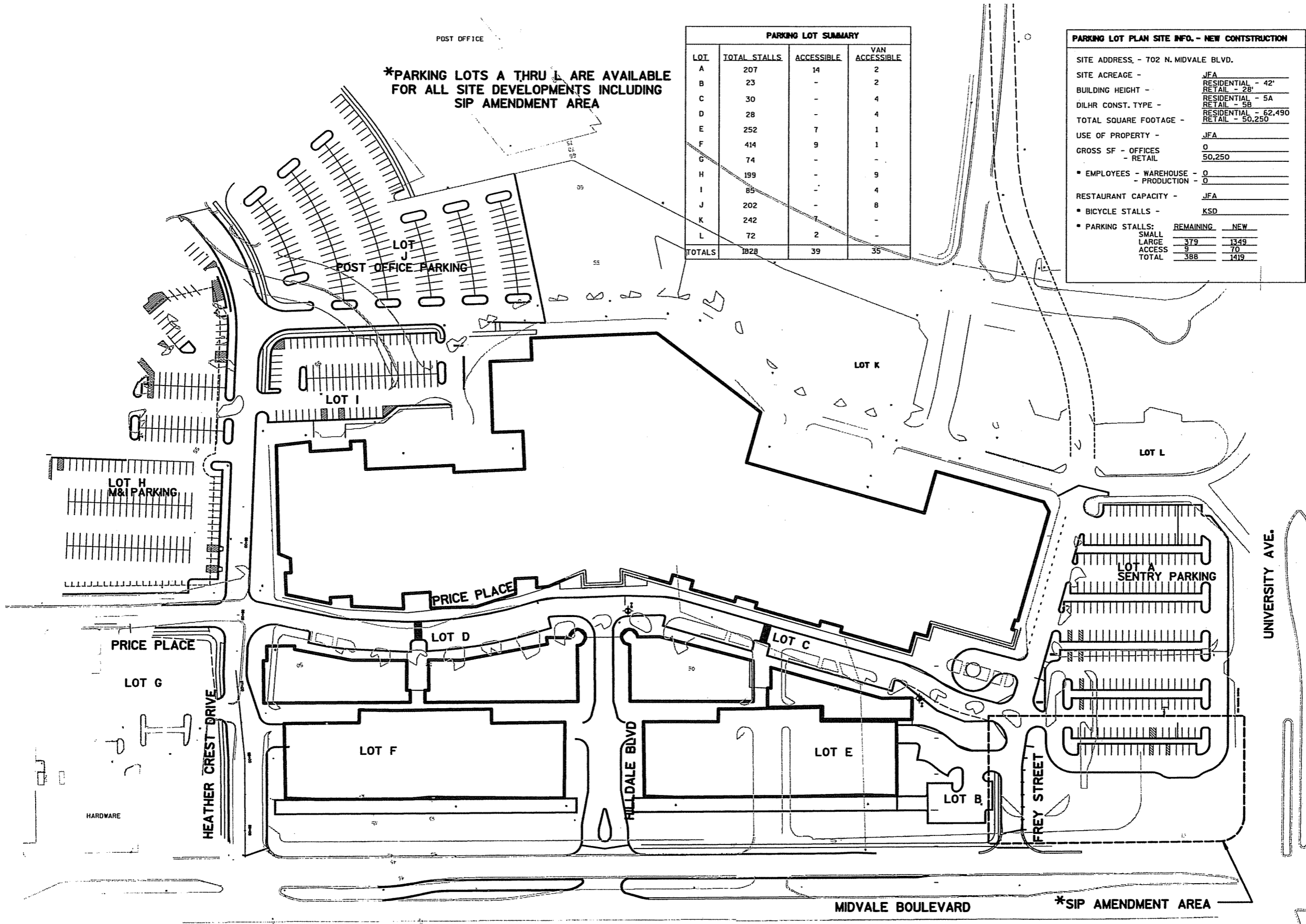
HILLDALE BUILDING COMPANY LLC

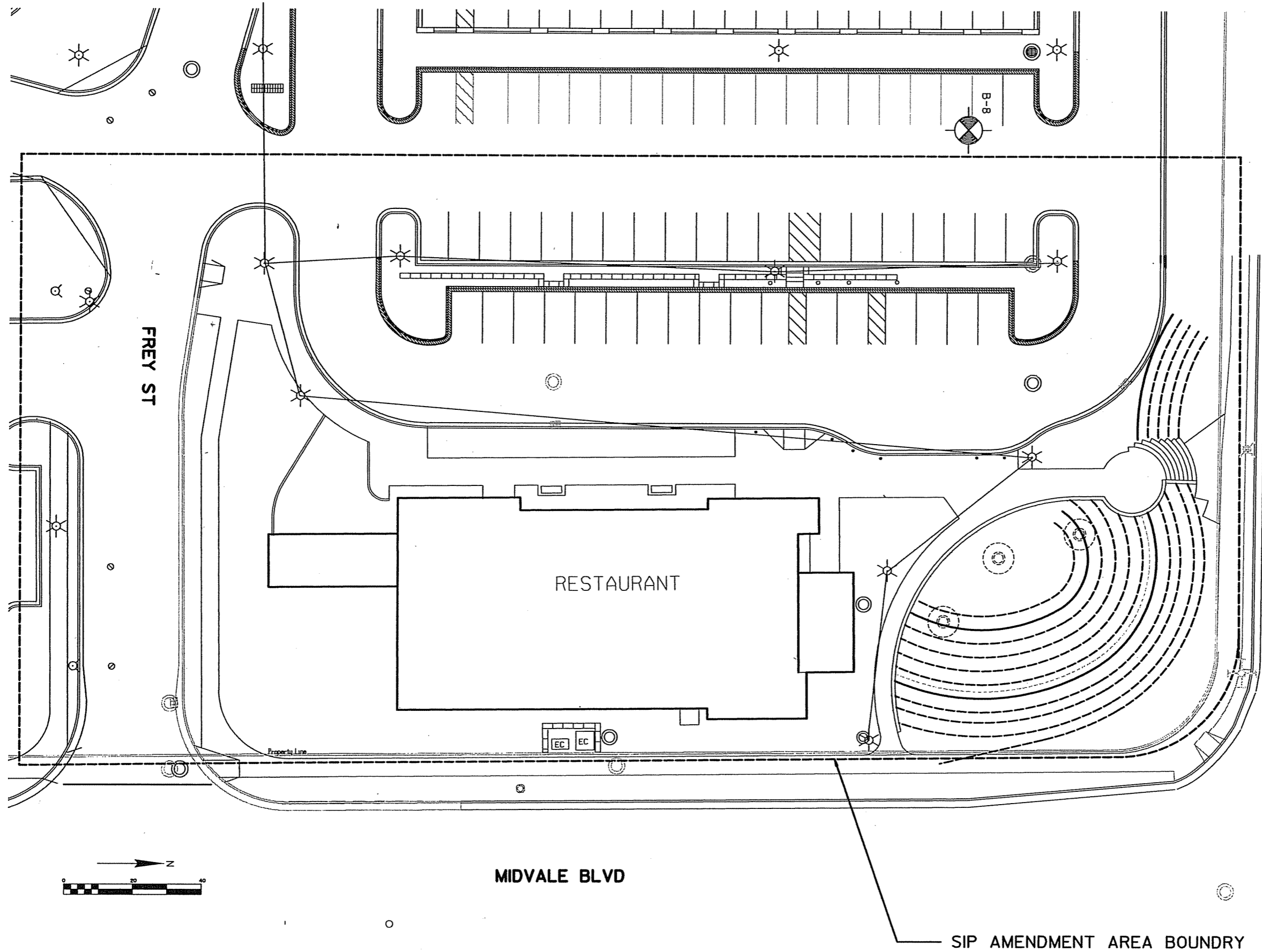
Sheet Title  
**PARKING LOT PLAN RESTAURANT**

Revisions	Date	Description	By

Project Number	Drawn By
Date Issued	Reviewed By
9/21/05	

Sheet Number  
**P 100R**





**STRAND ASSOCIATES, INC.**  
ENGINEERS

910 West Wingo Drive  
Madison, WI 53715  
608 251-4843  
608 251-8655 FAX  
www.strand.com

**HILLDALE SHOPPING CENTER**  
702 N. MIDVALE BOULEVARD  
MADISON, WI

HILLDALE BUILDING COMPANY LLC

Sheet Title  
**SITE LIGHTING PLAN**  
RESTAURANT SITE

No.	Date	Description	By

Project Number	Drawn By
Date Issued	Reviewed By
9/21/05	

Sheet Number  
**E 100R**





910 West Wings Drive  
Madison, WI 53715  
608 251-4843  
800 251-8555 FAX  
www.strand.com

**HILLDALE SHOPPING CENTER**  
702 N. MIDVALE BOULEVARD  
MADISON, WI

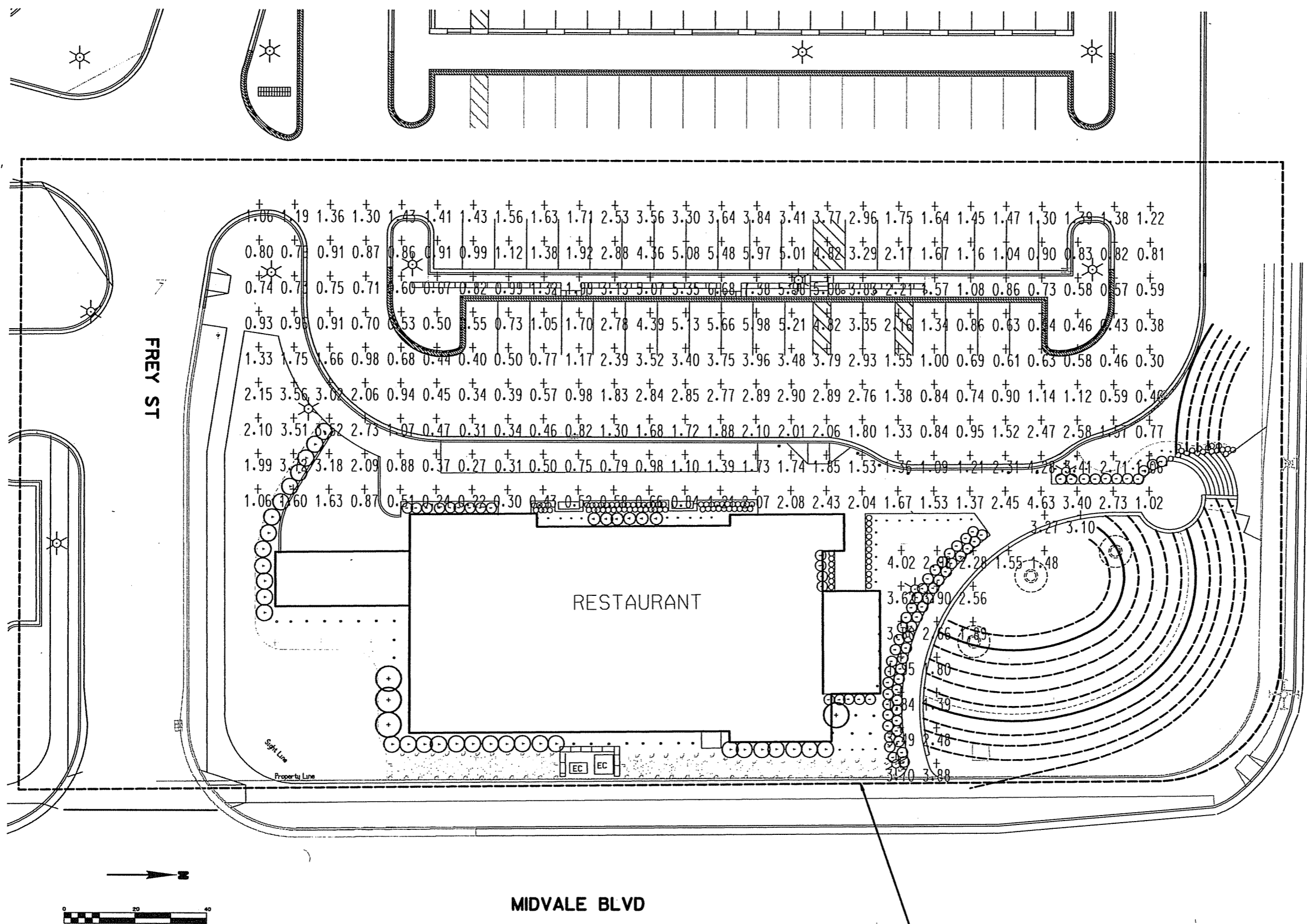
HILLDALE BUILDING COMPANY LLC

Sheet Title  
**SITE LIGHTING DISTRIBUTION**

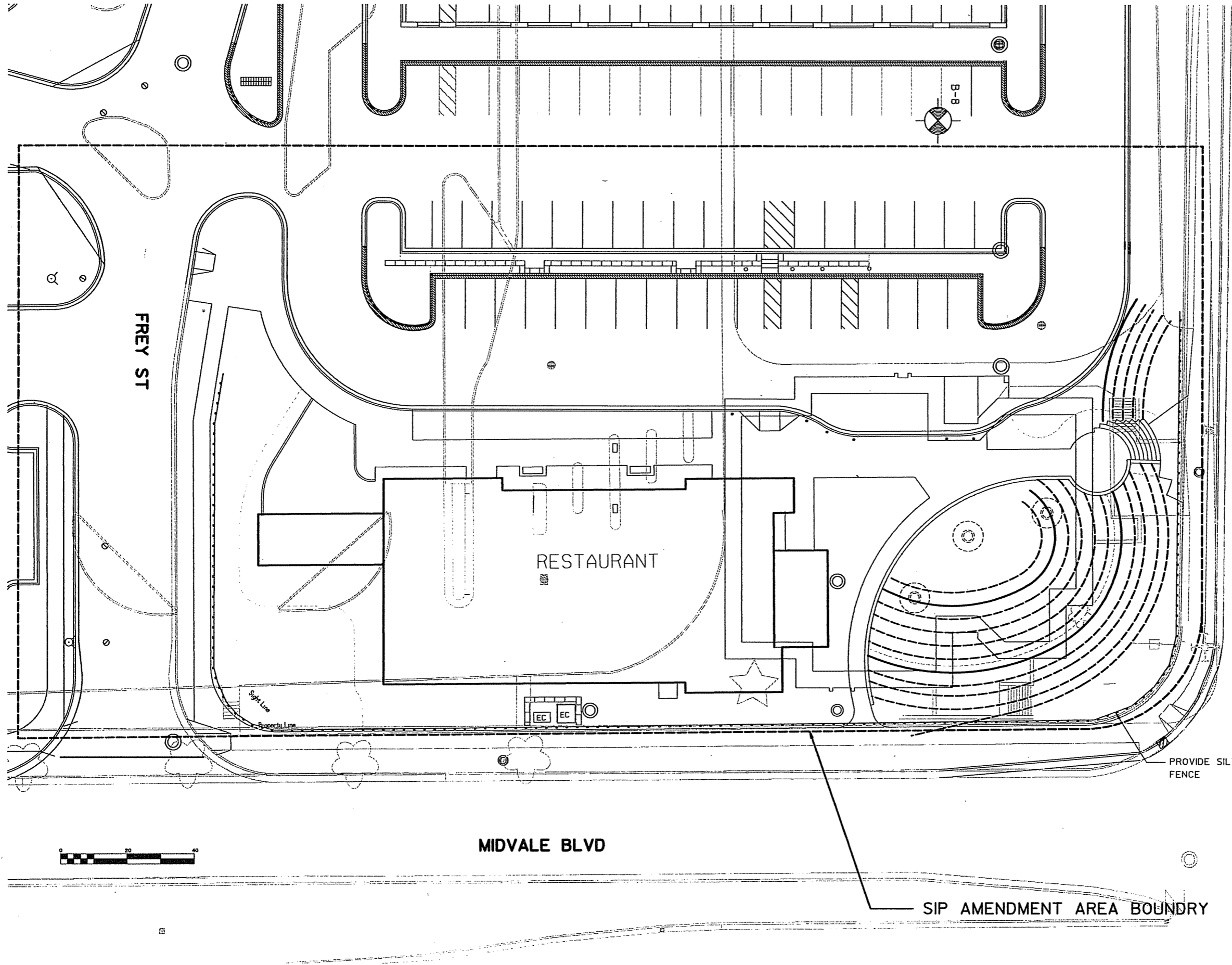
Rev	Date	Description	By

Project Number	Drawn By
Date Issued	Reviewed By
8/21/05	

Sheet Number  
**E 101R**



SIP AMENDMENT AREA BOUNDARY.



**STRAND ASSOCIATES, INC.**  
ENGINEERS

910 West Wings Drive  
Madison, WI 53715  
608 251-4843  
608 251-0655 FAX  
www.strand.com

**HILLDALE SHOPPING CENTER**  
702 N. MIDVALE BOULEVARD  
MADISON, WI

HILLDALE BUILDING COMPANY LLC

Part Title  
**EROSION CONTROL PLAN RESTAURANT SITE**

Rev	Description	By

Project Number	Drawn By
Date Issued	Revised By
8/21/05	

Sheet Number  
**EC 100R**



**HILLDALE SHOPPING CENTER**  
702 N. MIDVALE BOULEVARD  
MADISON, WI

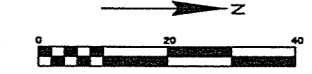
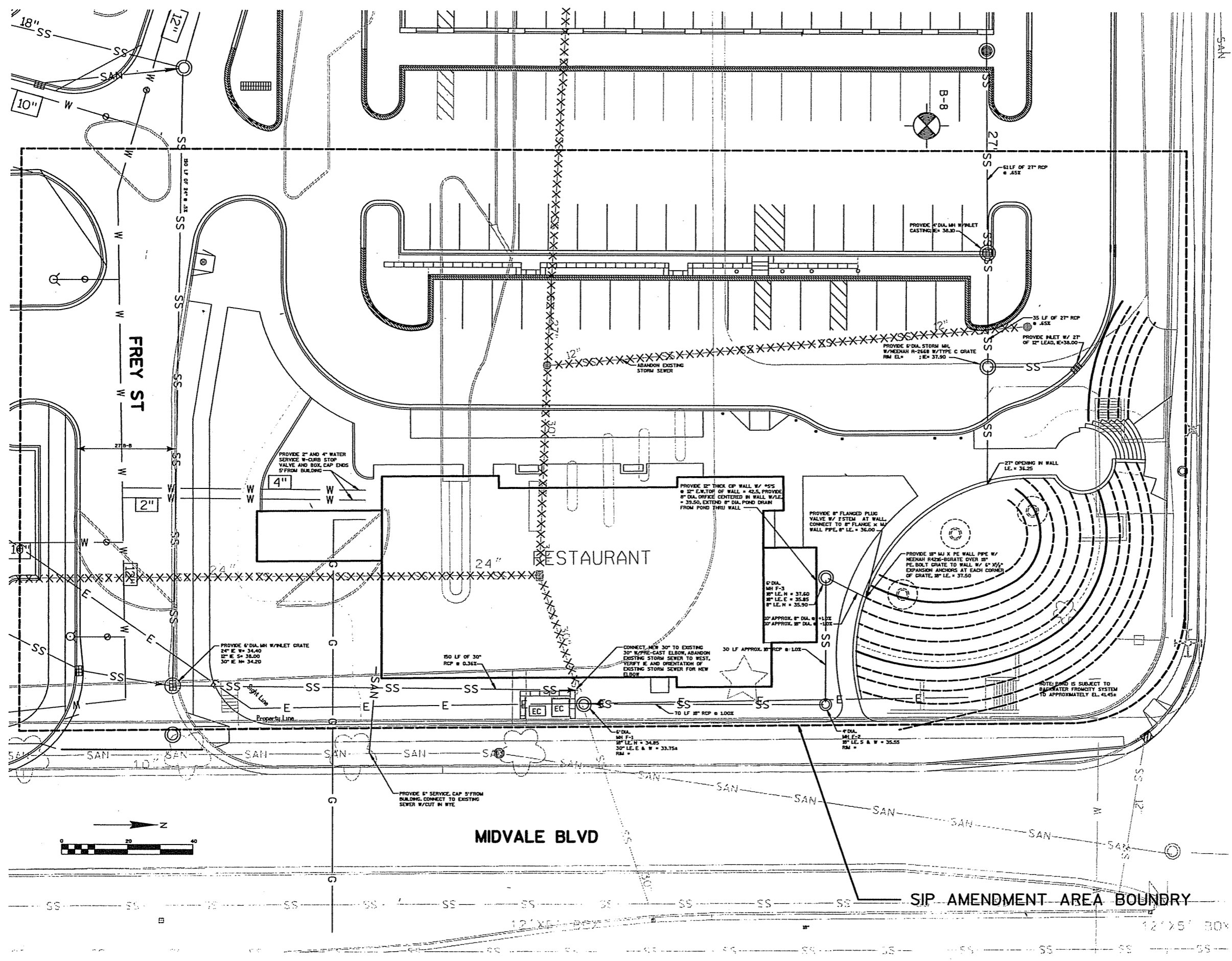
HILLDALE BUILDING COMPANY LLC

Utility Plan  
**RESTAURANT SITE**

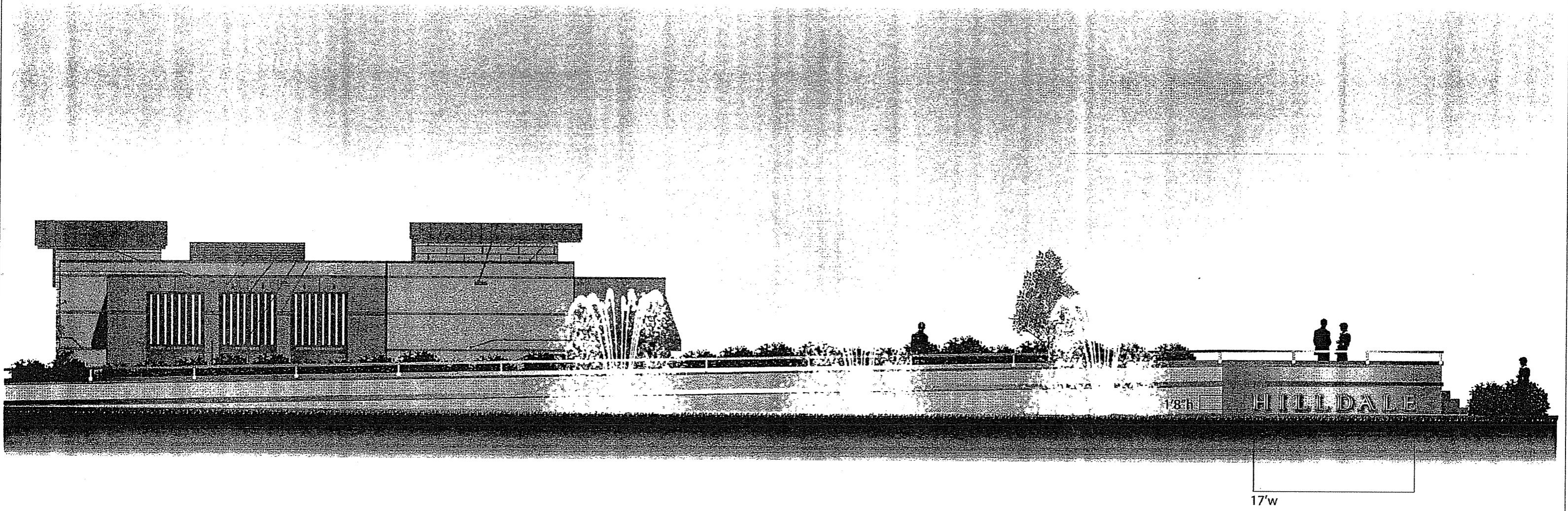
NO.	DATE	REVISION

Project Number	Drawn By
Date Issued	Reviewed By
9/21/05	

Sheet Number  
**U 100R**

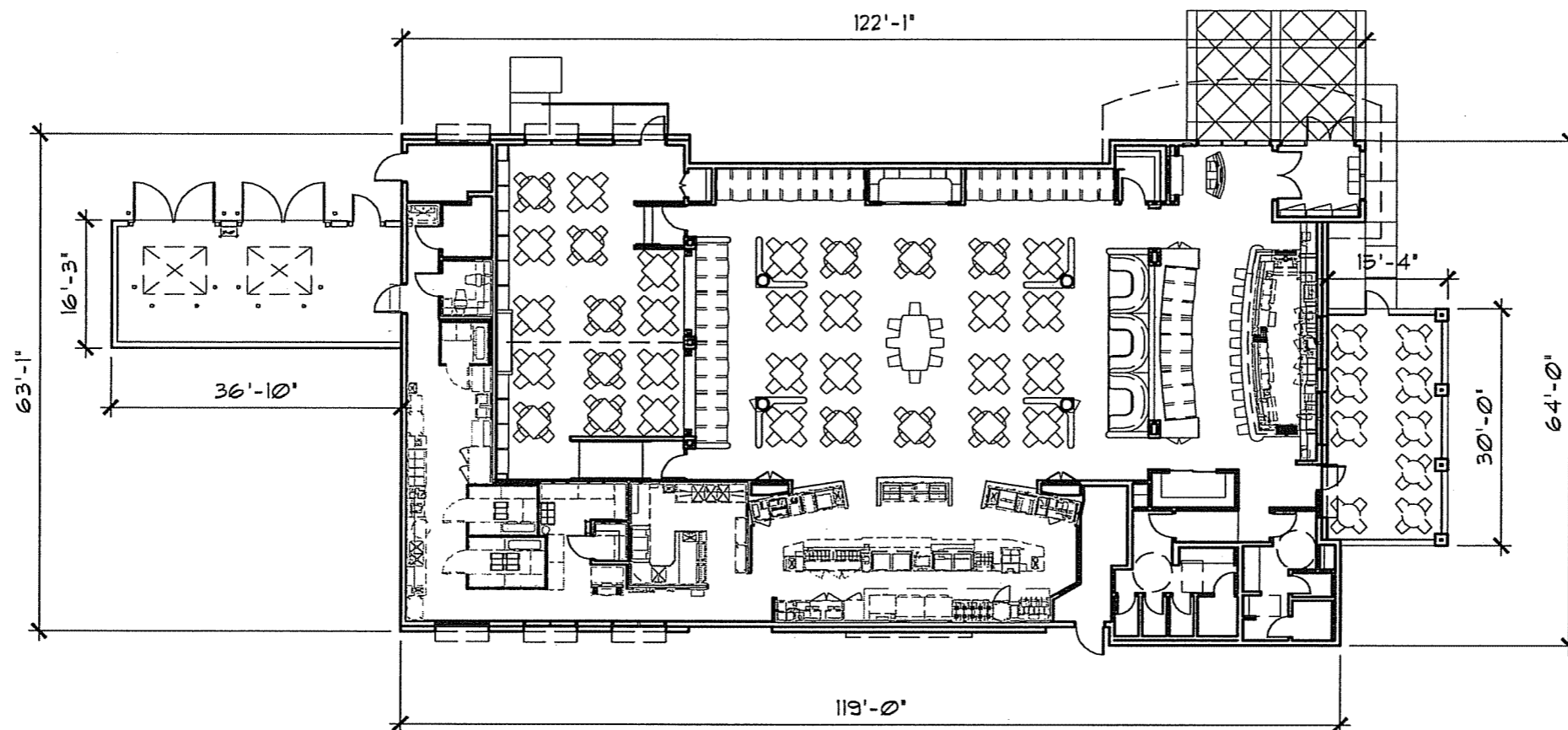






Retaining Wall Elevation  
Hilldale PUD-GDP-SIP Amendment #1  
Restaurant / Water Feature

- "HILLDALE" type:
- 17' w x 1'8" h
  - Laser-cut, brushed aluminum letters.
  - Raised 1" off of wall surface.



## FLOOR PLAN

DATE: 21 SEPTEMBER 2005

SCALE: 1" = 20'-0"

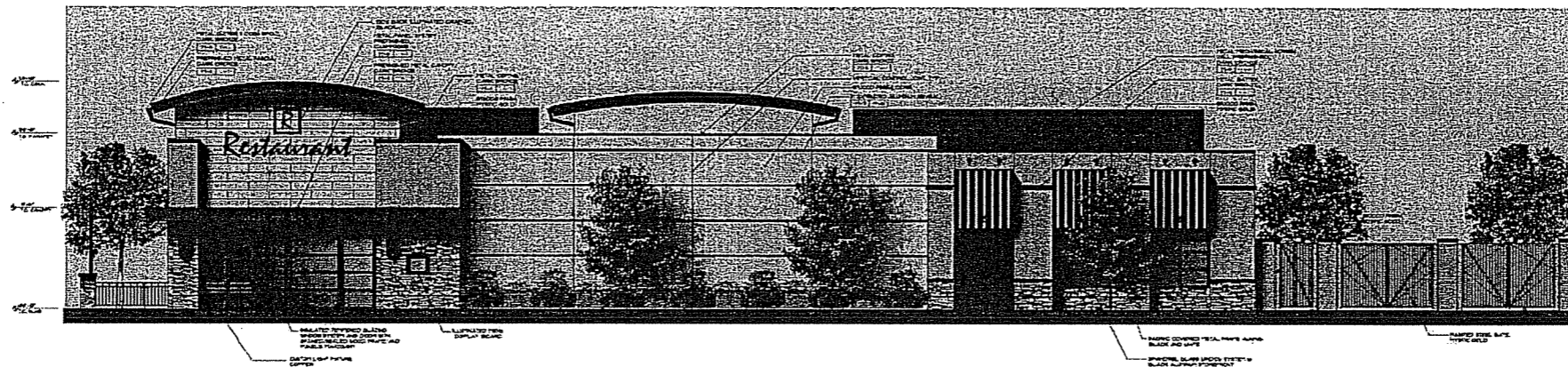
**R**  
Restaurant

MADISON - WISCONSIN

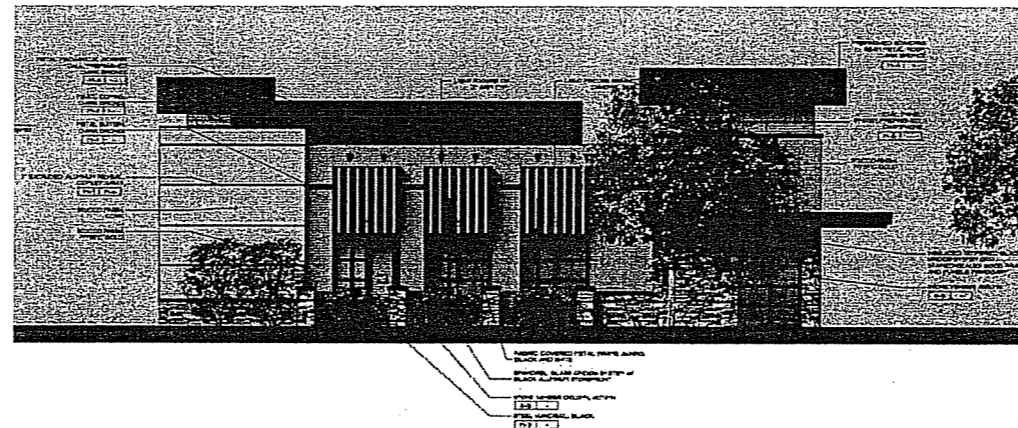
nelsen architects  
INC

ARCHITECTURE  
INTERIORS  
PLANNING

AUSTIN | SCOTTSDALE



WEST ELEVATION  
SCALE: 1:20



NORTH ELEVATION  
SCALE: 1:20

## FINISH MATERIALS SCHEDULE

### PAINT (DIV. 9)

- P-10 PRODUCT: PAINT  
MANUFACTURER: BENJAMIN MOORE  
COLOR: 2153-40 (CORK)
- P-11 PRODUCT: PAINT  
MANUFACTURER: BENJAMIN MOORE  
COLOR: HC-37 (MYSTIC GOLD)
- P-6 PRODUCT: PAINT  
MANUFACTURER: BENJAMIN MOORE  
COLOR: HC-124 (COPLEY GRAY)

### STONE (DIV. 4)

- S-5 PRODUCT: CULTURED STONE  
TEXTURE: WEATHERED EDGE LEDGESTONE  
COLOR: SILVERADO  
MANUFACTURER: QUENS CORNING

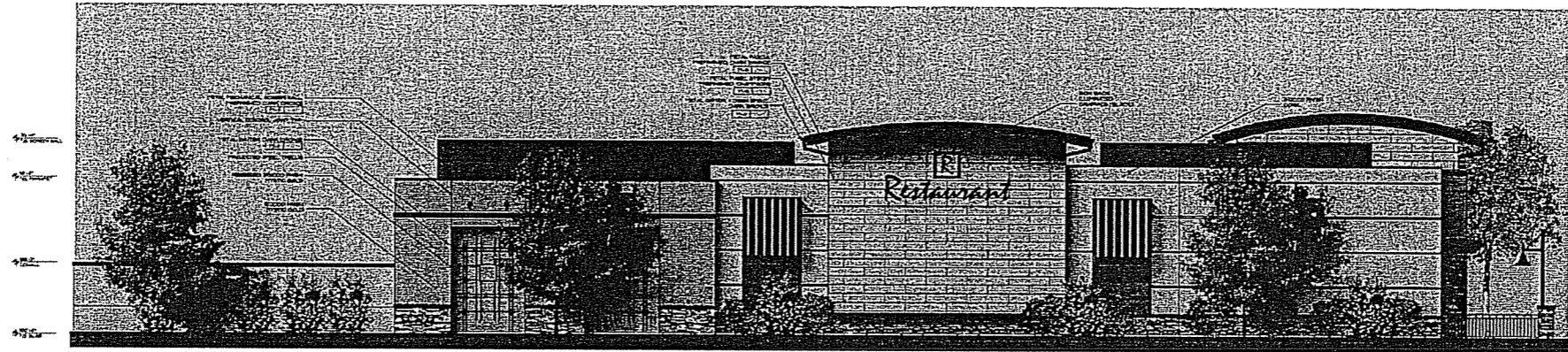
### METAL (DIV. 5)

- M-4 PRODUCT: PREFINISHED METAL  
COLOR: DARK BRONZE  
SOURCE: BERRIDGE
- M-5 PRODUCT: BLACK STEEL (EXTERIOR)  
FINISH: BLACK SEALED  
SEALER: METAL SEALER BY SCULPT NOUVEAU
- M-6 PRODUCT: PREFINISHED METAL  
COLOR: CHAMPAGNE  
SOURCE: BERRIDGE

nelsen architects  
INC

ARCHITECTURE  
INTERIORS  
PLANNING

AUSTIN | SCOTTSDALE



EAST ELEVATION  
SCALE: 1:20



SOUTH ELEVATION  
SCALE: 1:20

FINISH MATERIALS SCHEDULE

**PAINT (DIV. 9)**

- P-10 PRODUCT: PAINT  
MANUFACTURER: BENJAMIN MOORE  
COLOR: 2B3-40 (CORK)
- P-11 PRODUCT: PAINT  
MANUFACTURER: BENJAMIN MOORE  
COLOR: HC-31 (MYSTIC GOLD)
- P-6 PRODUCT: PAINT  
MANUFACTURER: BENJAMIN MOORE  
COLOR: HC-104 (COFLEY GRAY)

**STONE (DIV.4)**

- S-3 PRODUCT: CULTURED STONE  
TEXTURE: WEATHERED EDGE LEDGESTONE  
COLOR: SILVERADO  
MANUFACTURER: QUENS CORNING

**METAL (DIV. 5)**

- M-4 PRODUCT: PREFINISHED METAL  
COLOR: DARK BRONZE  
SOURCE: BERRIDGE
- M-3 PRODUCT: BLACK STEEL (EXTERIOR)  
FINISH: BLACK SEALED  
SEALER: METAL SEALER BY SCULPT NOUVEAU
- M-6 PRODUCT: PREFINISHED METAL  
COLOR: CHAMPAGNE  
SOURCE: BERRIDGE

nelsen architects  
INC

ARCHITECTURE  
INTERIORS  
PLANNING

AUSTIN | SCOTTSDALE