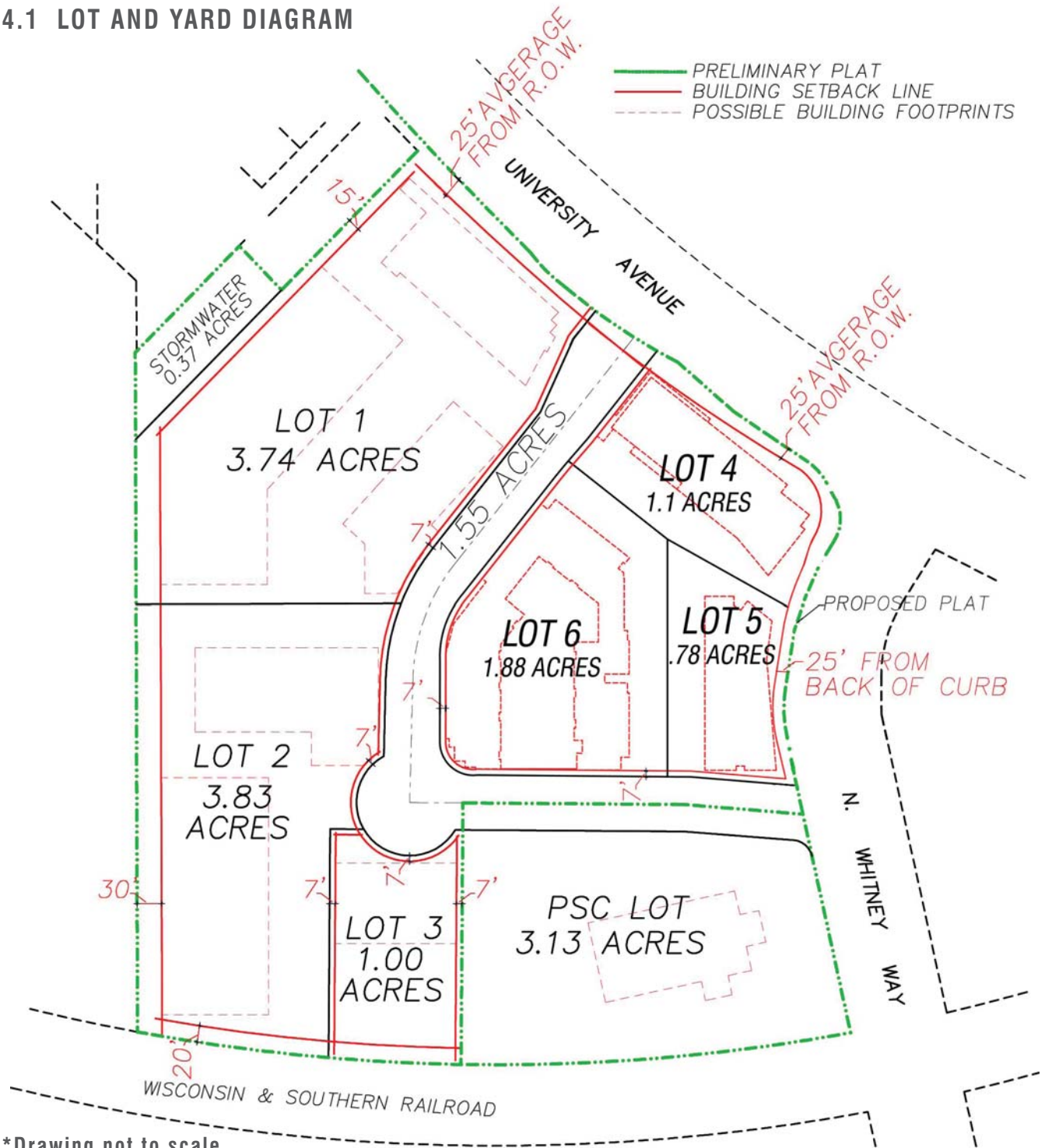
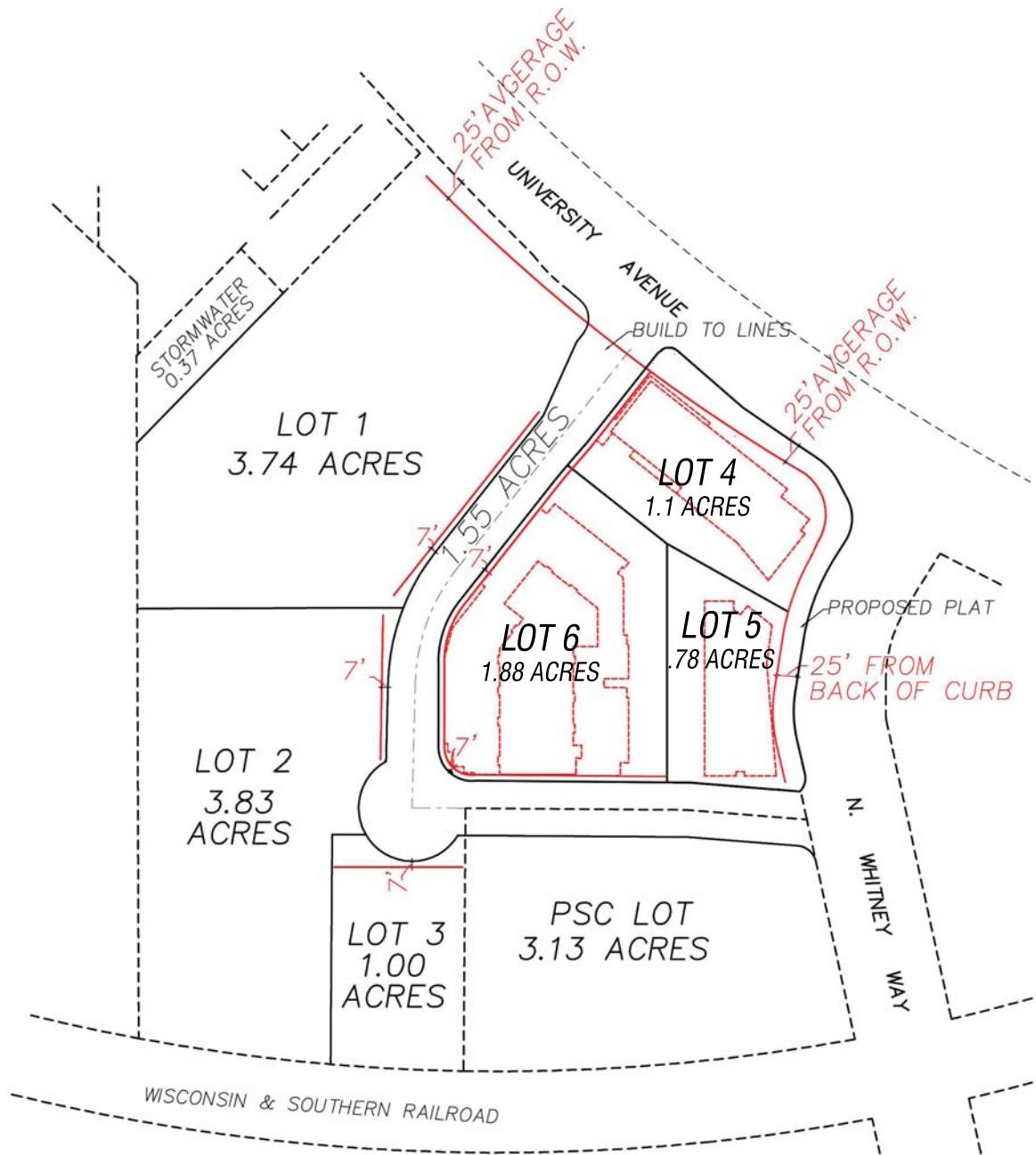


4.1 LOT AND YARD DIAGRAM



*Drawing not to scale



— BUILD-TO LINES

NOTE: BUILDINGS SHOULD BUILD UP TO THE BUILD-TO LINES IN ORDER TO DEFINE THE PUBLIC SPACE.

"BUILD-TO LINES" ARE TYPICALLY WITHIN 5' OF MINIMUM SETBACK LINES AT POTENTIAL BUILDING LOCATIONS. THE LOCATION OF BUILD-TO LINES MAY VARY AT CURVED R.O.W.'S. PORTIONS OF BUILDINGS CAN BE SET BACK FROM THE BUILD TO LINE BUT THE INTENT IS FOR MOST OF THE BUILDING TO BE BUILT UP TO THE BUILD-TO LINE. FINAL BUILDING LOCATIONS ARE TO BE DETERMINED IN S.I.P. PROCESS. STRUCTURES CAN BE RECESSED FROM THE BUILD-TO LINE TO ALLOW FOR ADDITIONAL LANDSCAPING

4.3 BUILDING DATA AND UTILIZATION AND CONCEPT MASTER PLAN

Lot #	Potential Land Use	Net Lot Area (sf)	Proposed Footprint Area (sf)	Proposed Height (stories)	Proposed Building Area (sf)	F.A.R.	Proposed Parking Stalls
1	Clinic	186,000	Bldg 1: 20,000 Bldg 1A: 17,500	3 4	Bldg 1: 67,420 Bldg 1A: 70,000	0.74	Surface: 47 Structure A: 456 Below Bldg: 28
2	Clinic	144,184	Bldg 2: 26,700	3	Bldg 2: 80,000	0.55	Surface: 19 Structure B: 342 Below Bldg: 50
3	Non-profit hospitality	43,560	Bldg 3: 13,400	3	Bldg 3: 40,000	0.92	Surface: 42
4	Office/Retail	54,014	Bldg 4: 22,800	3	Bldg 4: 64,940	1.2	Surface: 29 Below Bldg: 35
5	Hotel (or Office)	40,075	Bldg 5: 14,000	6 (or 4)	84,000 (or 64,000)	2.10 (or 1.60)	Surface: 36 Below Bldg: 24
6	Residential + Parking C	68,000	Residential 24,234 Parking 32,315	4 & 5	Residential 131,810 Parking 139,690	1.94	337
Total Building Area: 538,170					Total Parking Stalls 1,445		
(or 518,170 w./ #5 Office)					2.69 stalls/ 1,000 sf (or 2.79 w./ #5 Office)		

*Parking Structure C for Buildings 4, 5, & 6

Parking

Parking Structure A: 3 Levels - approx. 456 stalls
 Parking Structure B: 3 Levels - approx. 342 stalls
 Parking Structure C: 3 Levels - approx. 337 stalls
 (Parking Structures to be 10-11 feet floor to floor)

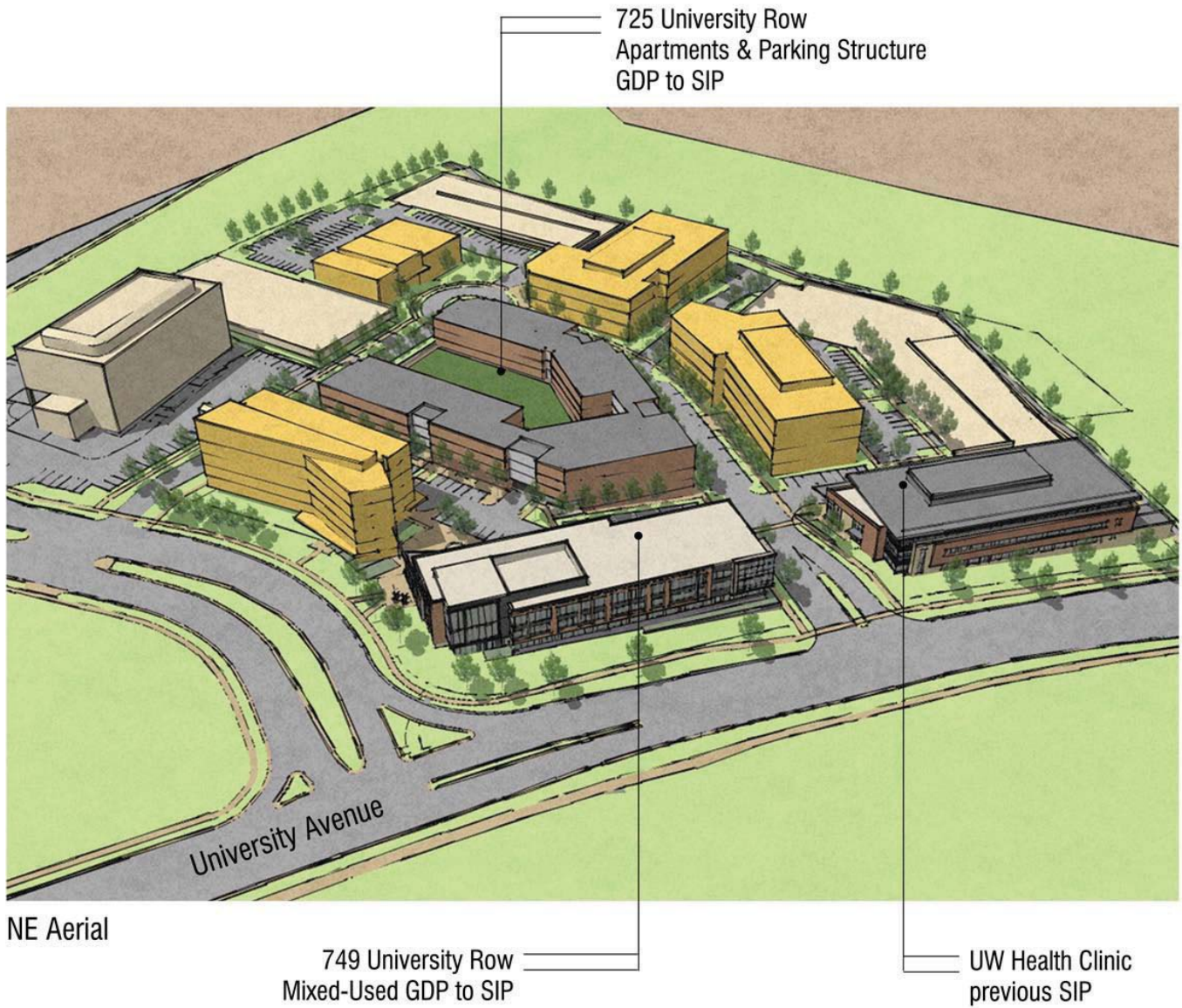


**This is a Concept Masterplan. Final building footprint uses and sizes will be determined during the SIP submittals.

4.4 DEVELOPMENT MASSING STUDIES



4.4 DEVELOPMENT MASSING STUDIES



5

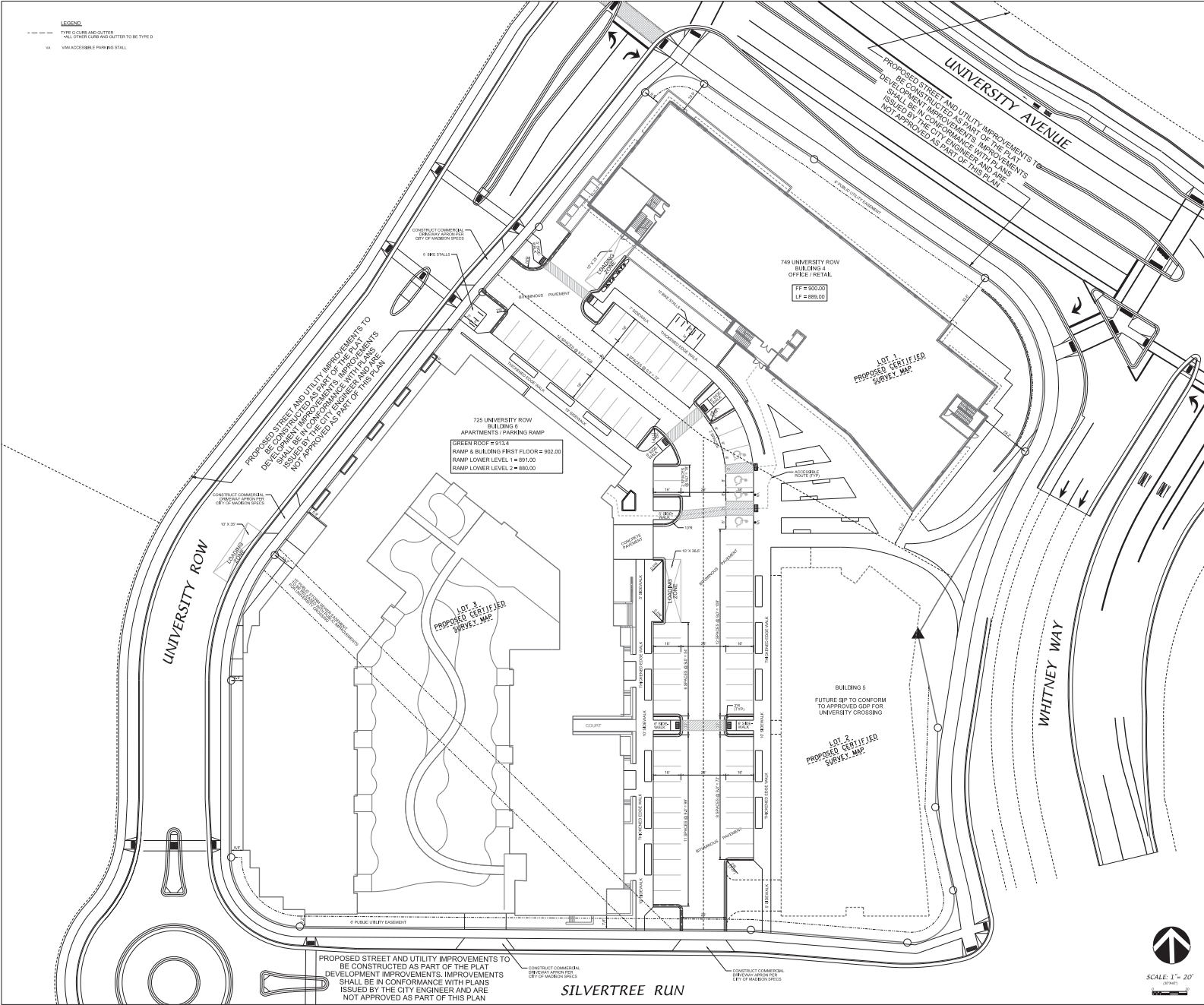
SECTION FIVE

- 5.1 Specific Implementation Plan (SIP) Site Drawings
 - C101 Site Plan
 - C102 Site Grading Plan
 - C103 Site Utility Plan
 - C104 Detail Sheet
 - C105 Fire Access Plan
 - L100 Landscape Plan
 - L101 Landscape Plan
 - E010 Site Lighting Plan
 - E101 Site Lighting Calculations

- 5.2 Specific Implementation Plan (SIP) Drawings for Building #4 Mixed-Use Building
 - A100 Lower Level Parking Plan
 - A101 First Floor Plan
 - A102 Second Floor Plan
 - A103 Third Floor Plan
 - A201 Building Elevations
 - A202 Building Elevations
3D Drawings

- 5.3 Specific Implementation Plan (SIP) Drawings for Building #6 University Row Apartments
 - A101 Lower Level Two Plan
 - A102 Lower Level One Plan
 - A103 First Floor Plan
 - A104 Second Floor Plan
 - A105 Third Floor Plan
 - A106 Fourth Floor Plan
 - A201 Building Elevations
 - A202 Building Elevations
3D Drawings

LEGEND
 --- TYPE CURB AND GUTTER
 --- AND OTHER CURB AND GUTTER TO BE TYPED
 --- VAN ACCESSIBLE PARKING STALL



Potter Lawson
KRUPP
 GENERAL CONTRACTORS, LLC

Consultant:
D'ONOFRO KOTTE AND ASSOCIATES, INC.
 7530 Wisconsin Way, Madison, WI 53717
 Phone: 608.833.7530 • Fax: 608.833.1009
 YOUR NATURAL RESOURCE FOR LAND DEVELOPMENT
 FN11406135

Notes:
 FINAL PUBLIC ROADWAY GEOMETRICS WILL BE PROVIDED BY THE CITY OF MADISON ENGINEERING DEPARTMENT. ALL WORK IN THE RIGHT OF WAY SHALL CONFORM WITH THE PLAN ISSUED BY THE CITY ENGINEER (PROJECT NUMBER 5352269)

"NOT FOR CONSTRUCTION"

Date	Issuance/Revisions	Symbol
2/08/12	Pub - SP SUBMITTAL	

UNIVERSITY CROSSING BUILDINGS #4 & #6

KRUPP GENERAL CONTRACTORS
 725 & 749 UNIVERSITY ROW
 MADISON, WISCONSIN

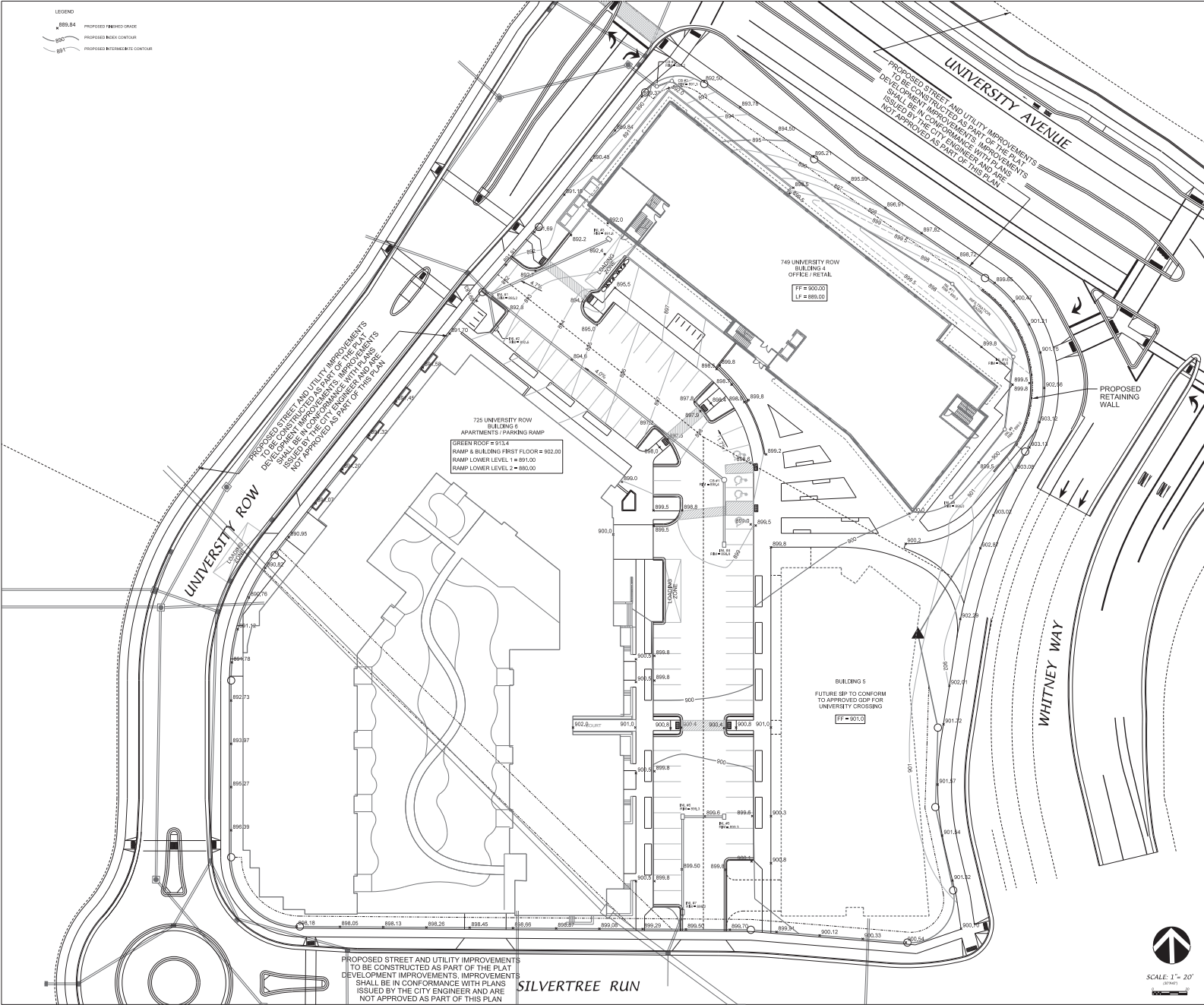


SCALE: 1" = 20'
 (3/24/11)

Drawn By: **SITE PLAN**

PI Project Number:	Drawn By:
	C101

LEGEND
 888.84 PROPOSED FINISHED GRADE
 890 PROPOSED ROCK CONTOUR
 891 PROPOSED INTERIM/EXISTING CONTOUR



Potter Lawson



Consultant:

D'ONOFRO KOTTE AND ASSOCIATES, INC.
 7530 Wisconsin Way, Madison, WI 53717
 Phone: 608.833.7530 • Fax: 608.833.1009
 YOUR NATURAL RESOURCE FOR LAND DEVELOPMENT

FN11406135

Notes:
 FINAL PUBLIC ROADWAY GEOMETRICS WILL BE PROVIDED BY THE CITY OF MADISON ENGINEERING DEPARTMENT. ALL WORK IN THE RIGHT OF WAY SHALL CONFORM WITH THE PLAN ISSUED BY THE CITY ENGINEER (PROJECT NUMBER 5352269)

"NOT FOR CONSTRUCTION"

Date	Rev	SP - SUBMITTAL	Symbol
2/08/12	1	ISSUANCE/REVISIONS	

UNIVERSITY CROSSING BUILDINGS #4 & #6

KRUPP GENERAL CONTRACTORS
 725 & 749 UNIVERSITY ROW
 MADISON, WISCONSIN



SCALE: 1" = 20'
 (3/24/12)

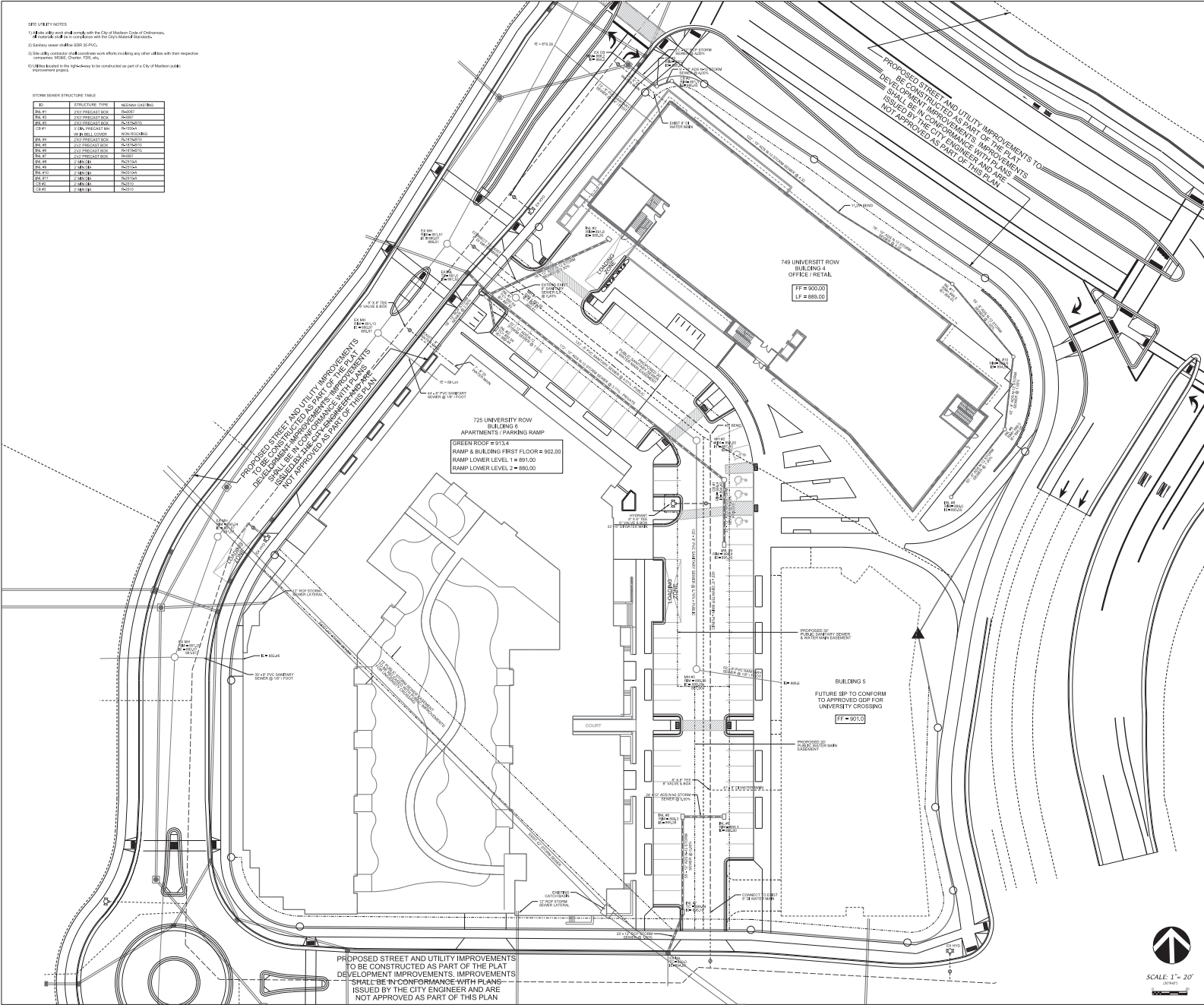
Site Title: SITE GRADING PLAN

Drawn By: C102

- SETBACK NOTES**
- 1) All setbacks shall comply with the City of Madison Code of Ordinances.
 - 2) Setbacks shall be in conformance with the City of Madison Code of Ordinances.
 - 3) All setbacks shall be in conformance with the City of Madison Code of Ordinances.
 - 4) All setbacks shall be in conformance with the City of Madison Code of Ordinances.

STORM SEWER STRUCTURE TABLE

ST	STRUCTURE TYPE	MINIMUM CALLING
ST-01	24" PRECAST CONCRETE	18" MIN
ST-02	24" PRECAST CONCRETE	18" MIN
ST-03	24" PRECAST CONCRETE	18" MIN
ST-04	24" PRECAST CONCRETE	18" MIN
ST-05	24" PRECAST CONCRETE	18" MIN
ST-06	24" PRECAST CONCRETE	18" MIN
ST-07	24" PRECAST CONCRETE	18" MIN
ST-08	24" PRECAST CONCRETE	18" MIN
ST-09	24" PRECAST CONCRETE	18" MIN
ST-10	24" PRECAST CONCRETE	18" MIN
ST-11	24" PRECAST CONCRETE	18" MIN
ST-12	24" PRECAST CONCRETE	18" MIN
ST-13	24" PRECAST CONCRETE	18" MIN
ST-14	24" PRECAST CONCRETE	18" MIN
ST-15	24" PRECAST CONCRETE	18" MIN
ST-16	24" PRECAST CONCRETE	18" MIN
ST-17	24" PRECAST CONCRETE	18" MIN
ST-18	24" PRECAST CONCRETE	18" MIN
ST-19	24" PRECAST CONCRETE	18" MIN
ST-20	24" PRECAST CONCRETE	18" MIN



Consultant:
D'ONOFRO KOTTKE AND ASSOCIATES, INC.
 7530 Wisconsin Way, Madison, WI 53717
 Phone: 608.833.7530 • Fax: 608.833.1009
 YOUR NATURAL RESOURCE FOR LAND DEVELOPMENT

Notes:
 FINAL PUBLIC ROADWAY GEOMETRICS WILL BE PROVIDED BY THE CITY OF MADISON ENGINEERING DEPARTMENT. ALL WORK IN THE RIGHT OF WAY SHALL CONFORM WITH THE PLAN ISSUED BY THE CITY ENGINEER (PROJECT NUMBER 5352298)

"NOT FOR CONSTRUCTION"

Date	Pub - SP SUBMITTAL	Issue/Revisions	Symbol
2/08/12			

UNIVERSITY CROSSING BUILDINGS #4 & #6

KRUPP GENERAL CONTRACTORS
 725 & 749 UNIVERSITY ROW
 MADISON, WISCONSIN



SCALE: 1" = 20'
 (3/24/12)

SITE UTILITY PLAN

Drawn By: [Blank]
 Checked By: [Blank]
 Date: [Blank]
 C103

Consultant:

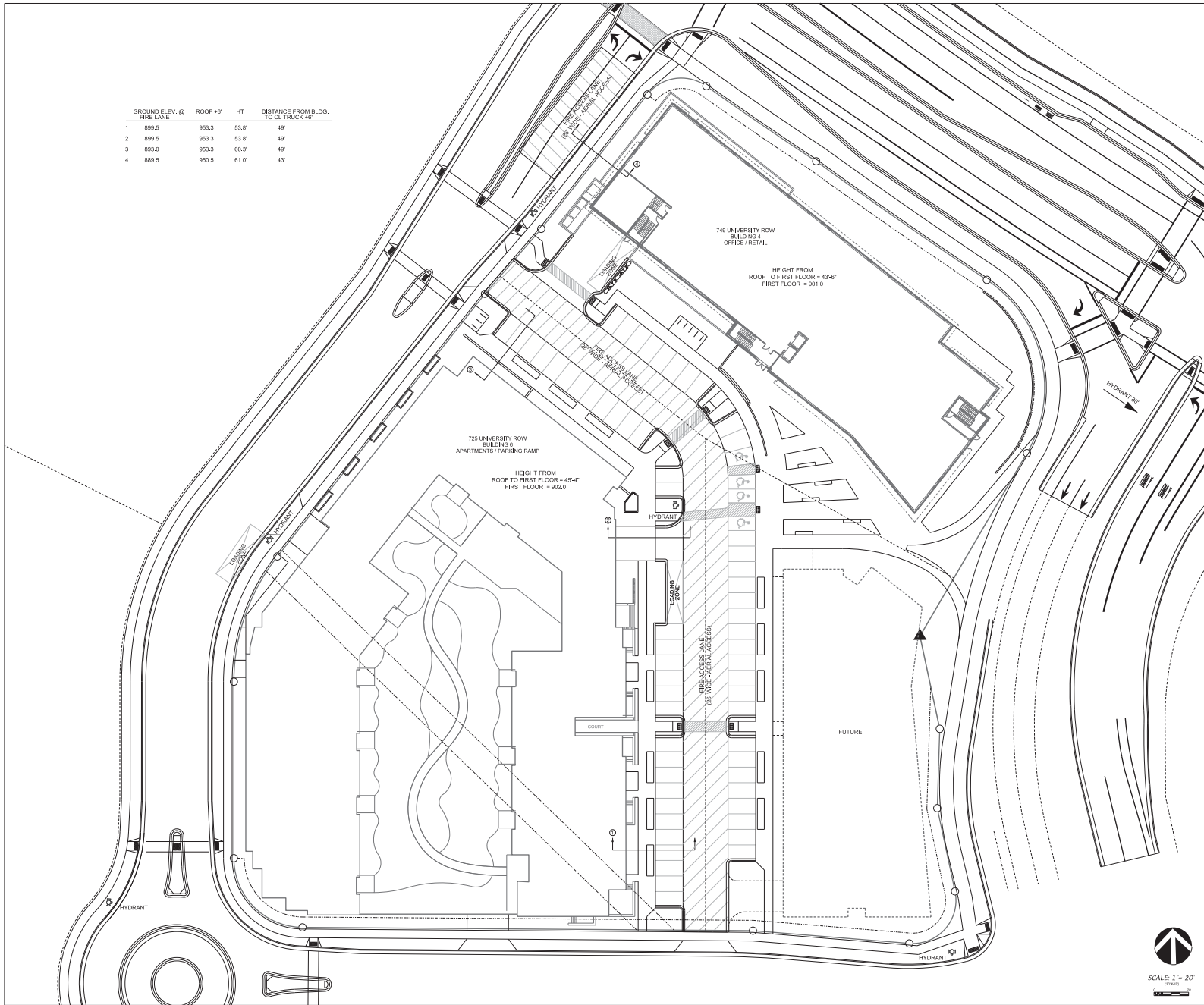
D'ONOFRO KOTKE AND ASSOCIATES, INC.
7530 Wisconsin Way, Madison, WI 53717
Phone: 608.833.7530 • Fax: 608.833.1009
YOUR NATURAL RESOURCE FOR LAND DEVELOPMENT

FN1105135

Notes:

FINAL PUBLIC ROADWAY GEOMETRICS WILL BE PROVIDED BY THE CITY OF MADISON ENGINEERING DEPARTMENT. ALL WORK IN THE RIGHT OF WAY SHALL CONFORM WITH THE PLAN ISSUED BY THE CITY ENGINEER (PROJECT NUMBER 5352269)

"NOT FOR CONSTRUCTION"



GROUND ELEV. @ FIRE LANE	ROOF #0'	HT	DISTANCE FROM BLDG. TO CL. TRUCK #0'
1 895.5	953.3	53.8'	49'
2 895.5	953.3	53.8'	49'
3 893.0	953.3	60.3'	49'
4 889.5	950.5	61.0'	43'

Date	Revision	Symbol

UNIVERSITY CROSSING BUILDINGS #4 & #6

KRUPP GENERAL CONTRACTORS

725 & 749 UNIVERSITY ROW
MADISON, WISCONSIN

FIRE APPARATUS ACCESS PLAN



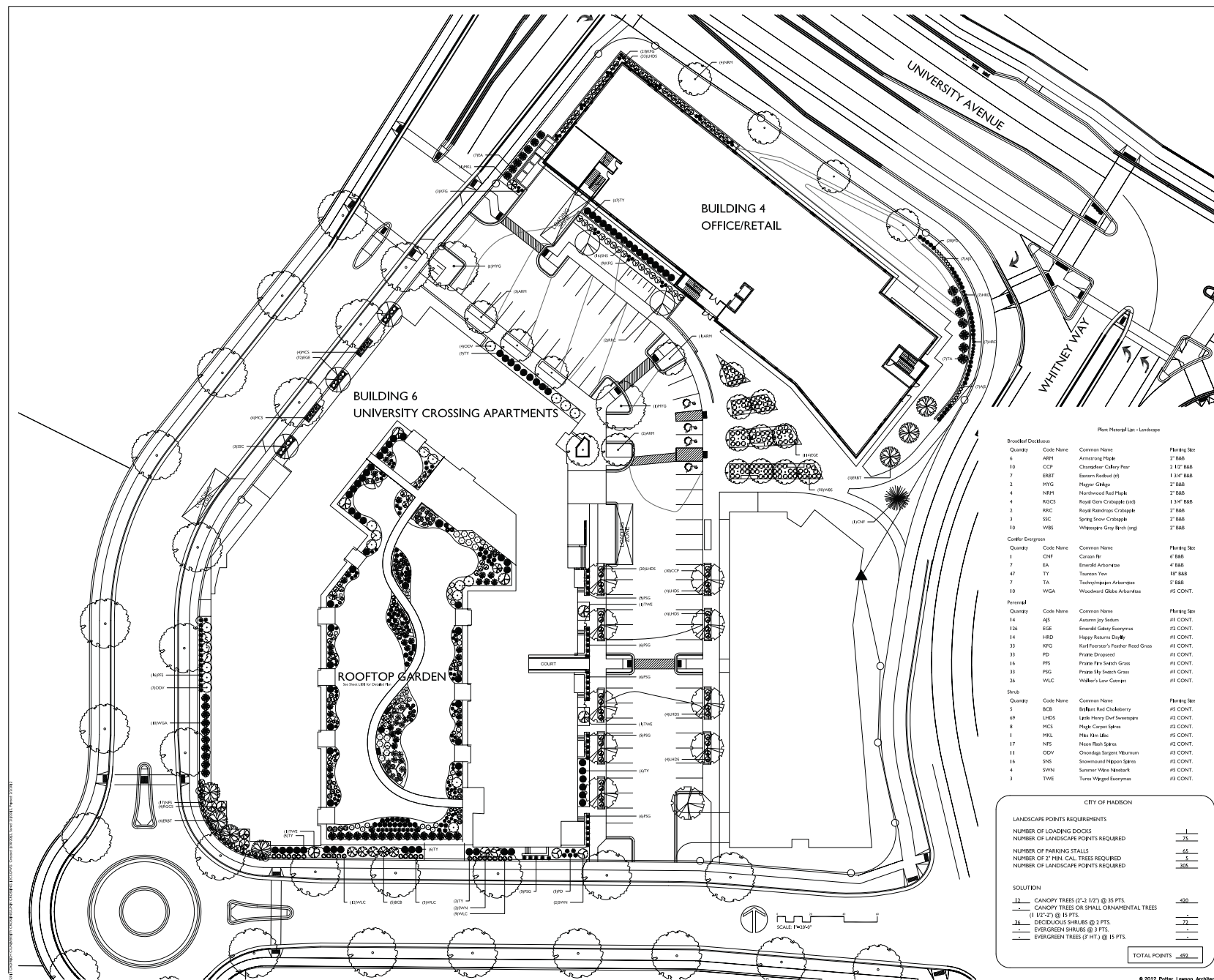
SCALE: 1" = 20'
(3/24/11)

Project Number: Drawing No. C105

Consultant:



Notes:



Plant Material List - Landscape

Quantity	Code Name	Common Name	Planting Size
6	ABPT	Armstrong Poplar	2" B&B
10	CCPF	Chandler-Gabley Pear	2 1/2" B&B
7	ERBT	Eastern Redbud (lf)	1 3/4" B&B
2	HYG	Hager Ginkgo	2" B&B
4	NBPT	Northwood Red Maple	2" B&B
4	NSCO	Royal Gem Crabapple (lf)	1 3/4" B&B
2	RAC	Royal Red-tips Crabapple	2" B&B
3	SSC	Spring Snow Crabapple	2" B&B
10	WBS	Whispering Gray Birch (lf)	2" B&B

Quantity	Code Name	Common Name	Planting Size
1	CNF	Cornus fr.	4" B&B
7	EA	Emerald Arbutus	4" B&B
47	TY	Taxus New	1 1/2" B&B
7	TA	Tachibana Japanese Arbutus	5" B&B
10	WGA	Woodward Globe Arbutus	15" CONT.

Quantity	Code Name	Common Name	Planting Size
14	ASJ	Autumn Joy Spirea	15" CONT.
126	ESE	Emerald Gabley Euonymus	15" CONT.
14	HRD	Happy Returns Daylily	15" CONT.
33	KFG	Karl Foerster's Feather Reed Grass	15" CONT.
33	FD	Prize Dragonhead	15" CONT.
16	FFS	Prize Fire Switch Grass	15" CONT.
33	PSG	Prize Sky Switch Grass	15" CONT.
26	WLC	Walker's Low Camassia	15" CONT.

Quantity	Code Name	Common Name	Planting Size
5	BCB	Brighton Red Chokeberry	15" CONT.
69	LHDS	Little Henry Dwarf Sweetspire	15" CONT.
8	MCS	Prize Carpet Spirea	15" CONT.
1	HL	Hot Lava Lilac	15" CONT.
17	NFS	Neon Flash Spirea	15" CONT.
11	ODV	Onondaga Sargent Yucciflora	15" CONT.
16	SNS	Snowmond Nelson Spirea	15" CONT.
4	SWK	Summer Wave Nandina	15" CONT.
3	TWE	Turkey Vireo Euonymus	15" CONT.

CITY OF MADISON

LANDSCAPE POINTS REQUIREMENTS

NUMBER OF LOADING DOCKS	1
NUMBER OF LANDSCAPE POINTS REQUIRED	1
NUMBER OF PARKING STALLS	45
NUMBER OF 2" MIN. CAL. TREES REQUIRED	5
NUMBER OF LANDSCAPE POINTS REQUIRED	305

SOLUTION

12	CANOPY TREES (2" - 1 1/2") @ 35 PTS.	= 420
1	CANOPY TREES OR SMALL ORNAMENTAL TREES (1 1/2" - 2") @ 15 PTS.	= 15
36	DECIDUOUS SHRUBS @ 3 PTS.	= 108
1	EVERGREEN SHRUBS @ 3 PTS.	= 3
1	EVERGREEN TREES (2" HT.) @ 15 PTS.	= 15
TOTAL POINTS		= 521

UNIVERSITY CROSSING BUILDINGS #4 AND #6

KRUPP GENERAL CONTRACTORS

725 UNIVERSITY ROW
MADISON, WISCONSIN

LANDSCAPE PLAN

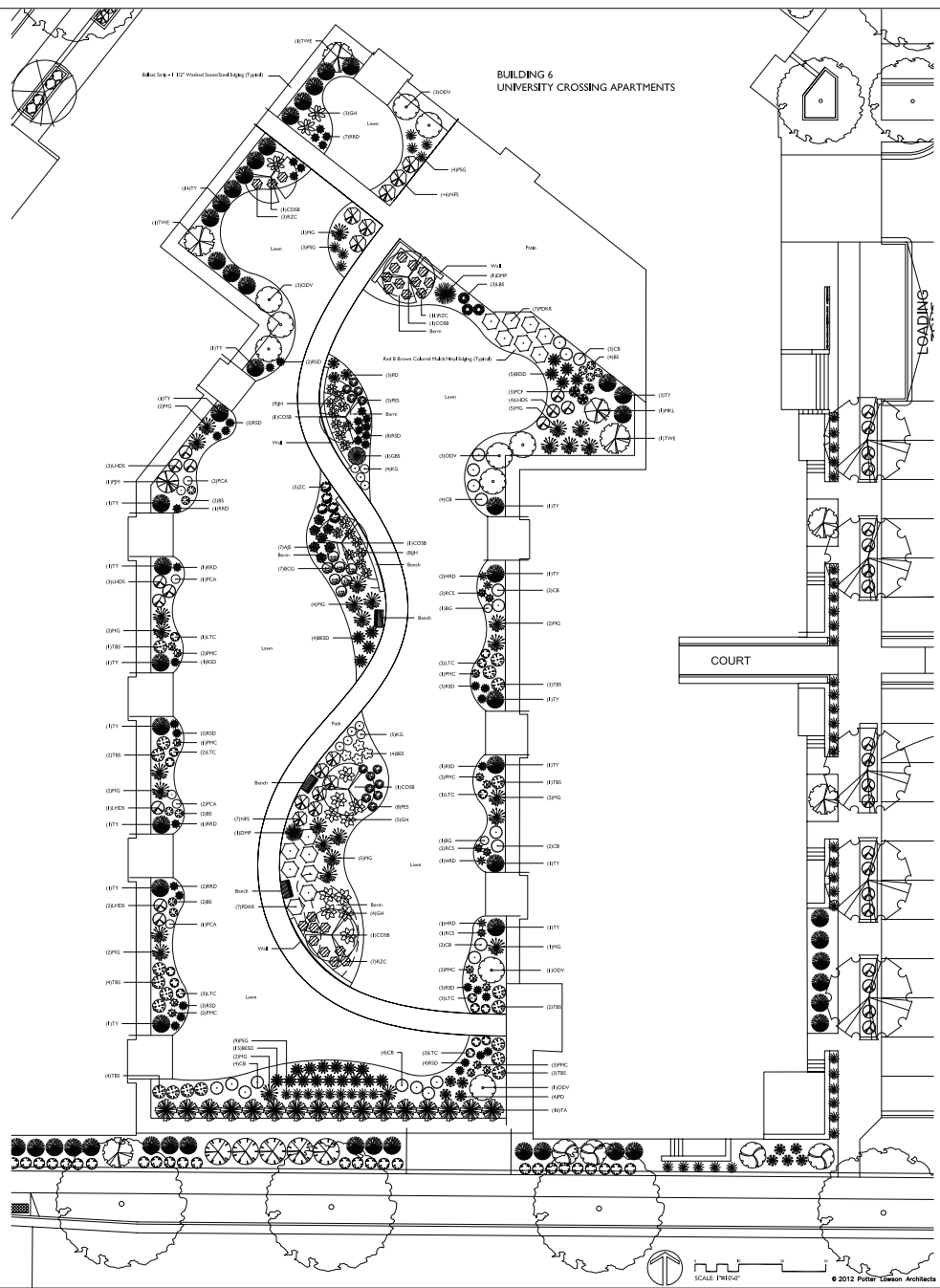
Project Number: 1508
Drawing No: L100

Quantity	Code Name	Common Name	Planting Site
6	CO5B	Cuba Strawberry (H)	7' BAR

Quantity	Code Name	Common Name	Planting Site
2	DMP	Dwarf Hedge Rose	1P POT
1	GBS	Globe Blue Spruce	24' BAR
32	TY	Tussock Yew	1P BAR
16	TA	Tachysanthus Arborescens	5' BAR

Quantity	Code Name	Common Name	Planting Site
7	AJS	Autumn Joy Sedum	12 CONT.
24	BSID	Black Gold Siam Quince	11 CONT.
7	BCG	Black Crystal Geranium	11 CONT.
10	BS	Becky's Sedum	11 CONT.
2	BG	Burgundy Gaillardia	11 CONT.
4	BES	Californian Blue-eyed Susan	11 CONT.
13	GH	Gascadia Hosta	11 CONT.
4	HRD	Happy Returns Daylily	11 CONT.
17	JH	June Hosta	11 CONT.
9	KG	Konrad Gageher	11 CONT.
3	LBS	Lark's Bluestem	11 CONT.
15	LTC	Lark's Torch Campar	11 CONT.
30	HG	Haban Grass	11 CONT.
14	PHC	Pink Meadowrue Convolvulus	11 CONT.
7	PD	Pink Dogwood	11 CONT.
16	PSG	Purple Sky Switch Grass	11 CONT.
6	PCA	Purple Clouds Aster	11 CONT.
3	PCF	Purple Coneflower	11 CONT.
13	PES	Purple Emperor Sedum	11 CONT.
12	RBD	Royal Returns Daylily	11 CONT.
5	RCS	Royal Crown Spirea	11 CONT.
23	RZC	Russian Columbine	11 CONT.
30	RSD	Ruby Slippers Daylily	11 CONT.
5	ZC	Zagreb Coreopsis	11 CONT.

Quantity	Code Name	Common Name	Planting Site
21	CB	Cabernet Barberis	12 CONT.
13	LHDS	Lark's Heavy Dwarf Sweetgale	12 CONT.
1	MKL	May Ram-lark	12 CONT.
13	NPS	Neon Pink Spirea	12 CONT.
10	ODV	Oxeye Daisy	12 CONT.
14	POKR	Pink Double Knock Out Rose	12 CONT.
1	PH	Pieris Rhododendron	12 CONT.
20	TBS	Turk's Beard Spirea	12 CONT.
3	TWE	Turkey Waxed Sycamore	12 CONT.



Potter Lawson

KRUPP
GENERAL CONTRACTORS, LLC

Consultant:
the drugg company
LANDSCAPE ARCHITECTS
2818 HANCOCK DR. STREET
WISCONSIN, WI 53588-4939
TEL: (608) 835-9141
FAX: (608) 854-6336

Notes:

Date	REV / SP	Description	Symbol

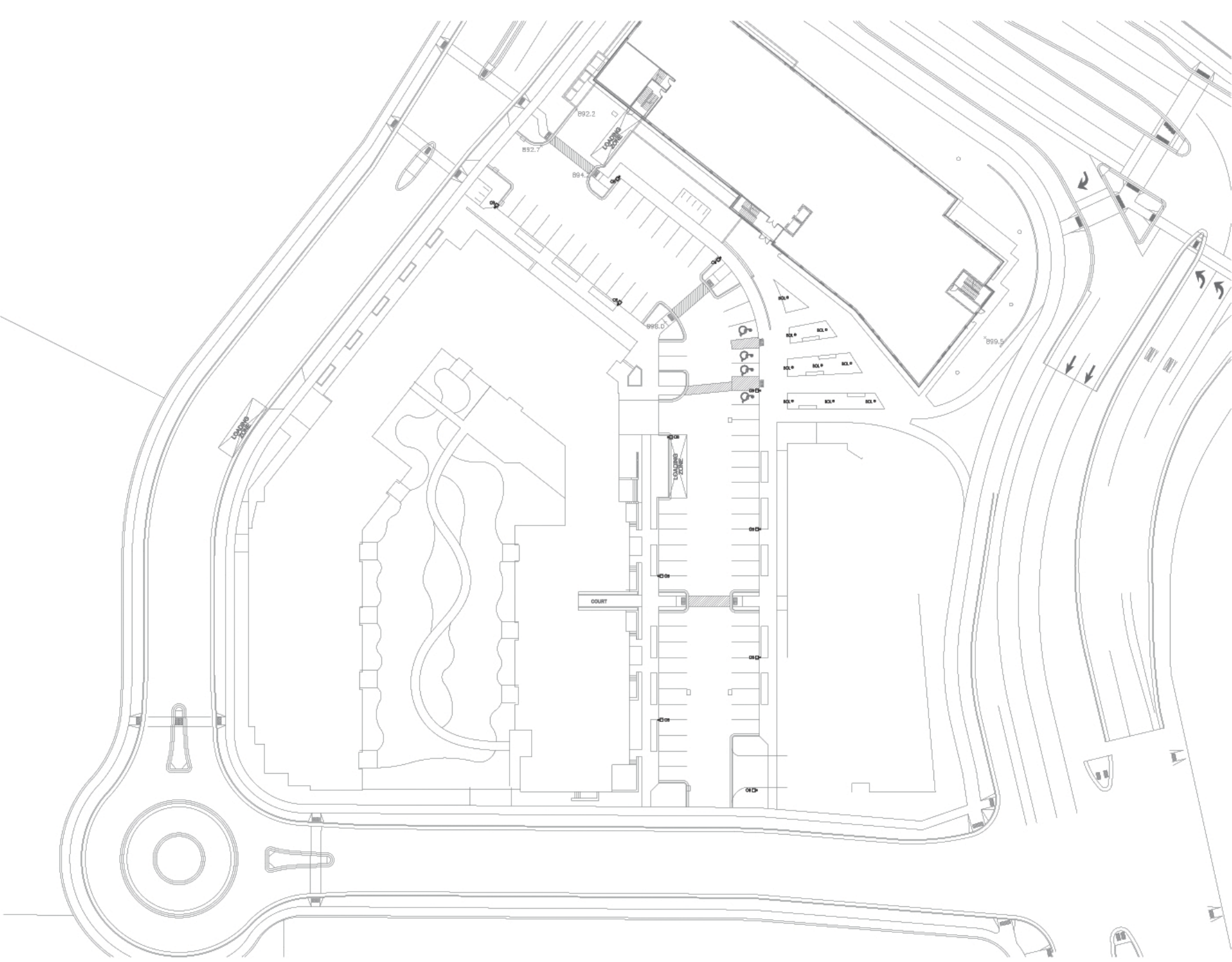
**UNIVERSITY CROSSING
BUILDINGS #4 AND #6**
KRUPP GENERAL CONTRACTORS

725 UNIVERSITY ROW
MADISON, WISCONSIN

Drawing Title
LANDSCAPE PLAN

Project Number: **101**
Drawing No.: **L101**

L:\PROJECTS\UNIVERSITY CROSSING BUILDINGS #4 AND #6\LANDSCAPE PLAN\UNIVERSITY CROSSING BUILDINGS #4 AND #6 LANDSCAPE PLAN.dwg



SITE LIGHTING PLAN
SCALE: 1" = 50'-0"

THINKERS BUILDERS PARTNERS
Electrical Contractor and Engineer Since 1974 • Specializing in Design/Bid
 11222 20450 Campbell Drive
 Monona, WI 53071
 Mailing Address • P.O. Box 917
 Butler, WI 53007-0917
 Phone • 262-781-6220
 Fax • 262-783-4880
 info@steele.com | steele.com

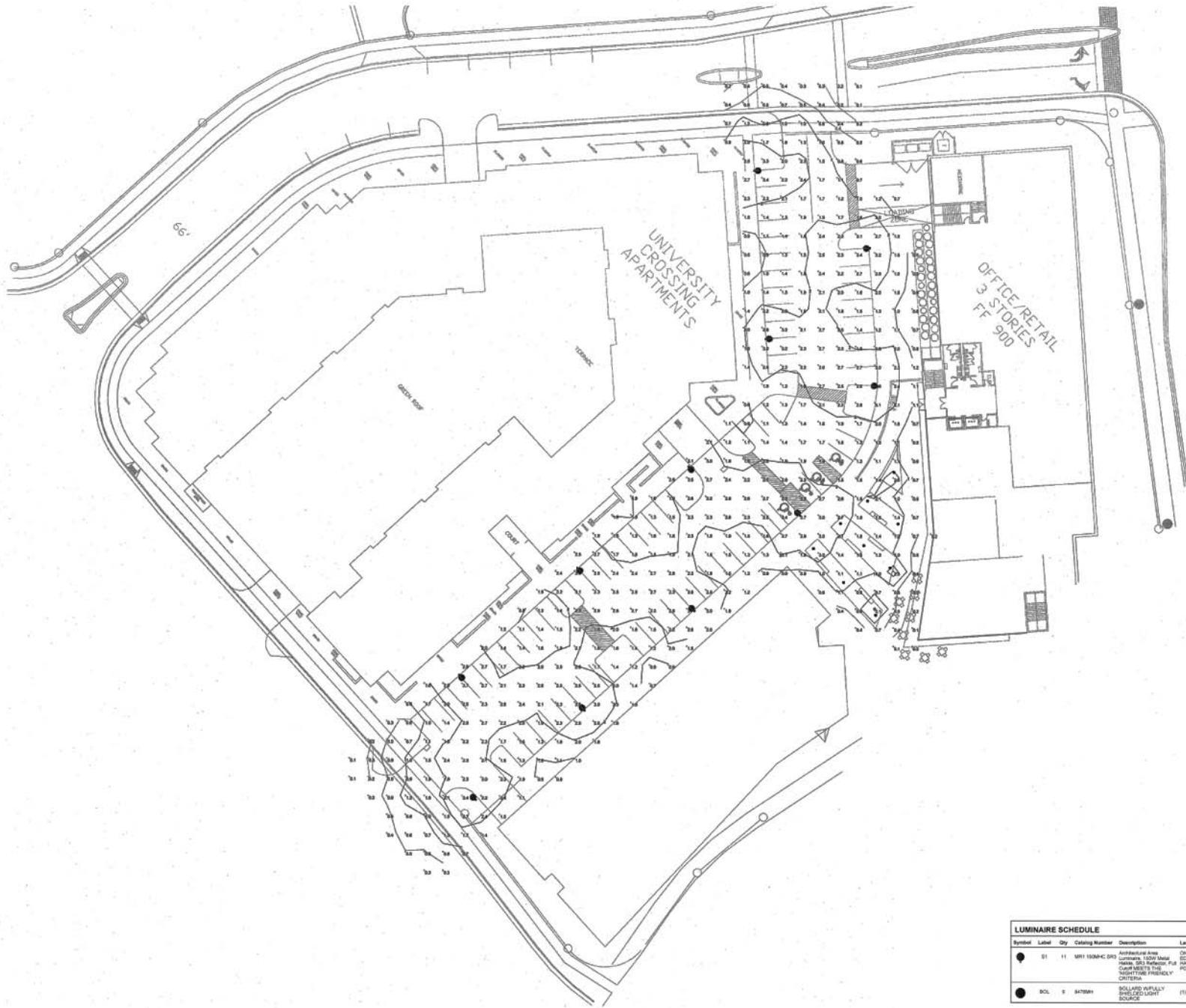
PROJECT TITLE:
UNIVERSITY CROSSING
PROJECT LOCATION:
 725 UNIVERSITY ROW
 MADISON, WI

SHEET TITLE:
SITE LIGHTING PLAN

1.
2.
3.
4.
5.
6.
7.
8.

DATE: 01.26.12
 DRAWN BY: ZJD
 APPROVED BY: BEC
 SCALE: 1" = 50'-0"
 SHEET NUMBER

E010



SITE LIGHTING CALCULATION
Scale 1" = 20'

LUMINAIRE SCHEDULE

Symbol	Label	Qty	Catalog Number	Description	Lamp	File	Lumens	LLF	Watts
●	S1	11	MH1 150W-C (S)	Architectural Area Luminaires: 150W Metal HANS: 300 PARABOLIC FILL CAGE WITH THE "NIGHTTIME FRIENDLY" CRISTAL	ONE 150WATT CLEAR E817 CERAMIC METAL PAUCE HORIZONTAL JGL 1W	MH1 150W-C	14000	0.75	208
●	SCL	9	S470WH	BOLLARD FULLY SHIELDED LIGHT SOURCE	(1) 30W T8 0.12 MH	S470WH-ES	3200	0.95	45

STATISTICS

Description	Symbol	Avg	Max	Min	Max/Min	Avg/Min
Calc Zone #2	-	17.6	37.6	0.0	N/A	N/A

UNIVERSITY CROSSING
SITE LIGHTING CALCULATION

Designer

SEC

Date

Feb 2 2012

Scale

1" = 20'

Drawing No.

E101

FEATURES & SPECIFICATIONS

INTENDED USE — Streets, walkways, parking lots and surrounding areas.

CONSTRUCTION — Rugged, die-cast, single piece aluminum housing with nominal wall thickness of 1/8". Die-cast doorframe has impact-resistant, tempered, glass lens (3/16" thick). Doorframe is fully gasketed with one-piece tubular silicone.

Finish: Standard finish is dark bronze (DDB) corrosion-resistant polyester powder finish, with other architectural colors available.

OPTICS — MIRO finish, segmented reflectors for superior uniformity and control. Reflectors attach with tool-less fastener and are rotatable and interchangeable. Five full cutoff distributions available: Type II (roadway), Type III (asymmetric), Type IV (forward throw), Type IV (forward throw sharp cutoff) and Type V (symmetric square).

ELECTRICAL — Ballast: Constant wattage autotransformer. Metal Halide: Super CWA (pulse start ballast), 88% efficient and EISA legislation compliant, is required for 175-400W (SCWA option) for US shipments only. CSA, NOM or INTL required for probe start shipments outside of the US. Pulse-start ballast (SCWA) required for 200W, 320W, or 350W. Ballast is 100% factory-tested. All ballasts are mounted on a removable power tray.

Socket: Porcelain, mogul-based socket with copper alloy, nickel-plated screw shell and center contact.

LISTINGS — Listed and labeled to UL standards for wet locations. Listed and labeled to CSA standards (see Options). NOM Certified (see Options). IP65 Rated. U.S. Patent No. D556,357.

Note: Specifications subject to change without notice.



Consistent with LEED® goals & Green Globes™ criteria for light pollution reduction

Catalog Number
Notes
Type



Architectural Area & Roadway Lighting

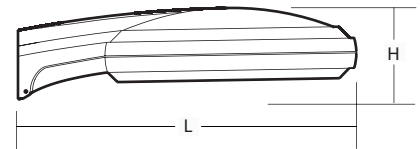


MR2

METAL HALIDE: 175W - 400W
HIGH PRESSURE SODIUM: 200W - 400W

Specifications

- Length: 32-7/8 (83.5)
- Diameter: 25 (63.5)
- Overall Height: 8-1/4 (21.0)
- *Weight: 46 lb. (20.9 kg)
- EPA: 0.91 ft² (0.08²)



All dimensions are inches (centimeters) unless otherwise indicated.

*Weight as configured in example below.

ORDERING INFORMATION

For shortest lead times, configure product using standard options (shown in bold.)

Example: MR2 400M SR3 TB SCWA LPI

MR2	Series	Wattage	Distribution	Voltage	Ballast	Mounting	Options	Finish ¹⁷	Lamp ¹⁸
	MR2	Metal halide	SR2	120	(blank) Magnetic	SPA Square pole mounting	Shipped installed in fixture	(blank) Dark bronze	LPI Lamp included
		175M ¹		208 ⁶	CWI Constant wattage isolated	RPA Round pole mounting	SF Single fuse (120, 277, 347V) ^{12,13}	DBL Black	L/LP Less lamp
		200M ²	SR3	240 ⁶	Pulse Start	WBA Wall bracket (up or down) ⁹	DF Double fuse (208, 240, 480V) ^{12,13}	DGC Charcoal gray	
		250M³		277	SCWA Super CWA pulse start ballast	Shipped separately ^{10,11}	PER NEMA twist-lock receptacle only (no photocontrol)	DMB Medium bronze	
		320M ²	SR4SC	347	Note: For shipments to U.S. territories, SCWA must be specified to comply with EISA.	DCMR2 Decorative curved arm, (square pole only)	QRS Quartz restrike system ^{13,14}	DWH White	
		350M ^{1,2,4}		480 ⁶		DCMR2R Decorative curved arm, (round pole only)	HS Houseside shield (SR2, SR3, SR4W) ^{10,15}	DNA Natural aluminum	
		400M^{3,4}		TB⁷			EC Emergency circuit ¹⁴	CR Enhanced corrosion-resistance	
		High pressure sodium ²	SR4W	23050HZ ⁸			CSA Listed and labeled to Canadian safety standards		
		200S					NOM NOM certified ⁸		
		250S					INTL Available for MH probe start shipping outside the U.S.		
		400S	SR55				REGC1 California Title 20 effective 1/1/2010 Shipped separately ¹⁰		
							PE1 NEMA twist-lock PE (120, 208, 240V)		
							PE3 NEMA twist-lock PE (347V)		
							PE4 NEMA twist-lock PE (480V)		
							PE7 NEMA twist-lock PE (277V)		
							SC Shorting cap for PER option		
							VG Vandal guard ¹⁶		

Accessories: Tenon Mounting Slipfitter						
Order as separate catalog number. Must be used with pole mounting (RPA).						
Tenon O.D.	One	Two@180°	Two@90°	Three@120°	Three@90°	Four@90°
2-3/8"	AST20-190	AST20-280	AST20-290	AST20-320	AST20-390	AST20-490
2-7/8"	AST25-190	AST25-280	AST25-290	AST25-320	AST25-390	AST25-490
4"	AST35-190	AST35-280	AST35-290	AST35-320	AST35-390	AST35-490

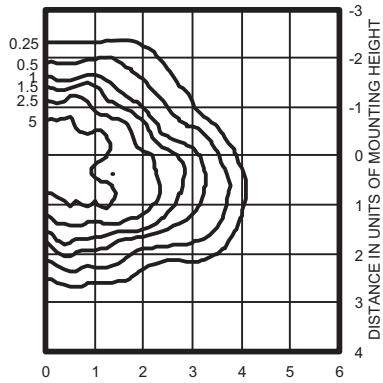
Notes

- These wattages do not comply with California Title 20 regulations.
- Must order SCWA.
- These wattages require the REGC1 option to be chosen for shipments into California for Title 20 compliance. 250M REGC1 is not available in 347 or 480V.
- Must use reduced jacket lamp ED28.
- Not available with SCWA.
- Must specify CWI for use in Canada.
- Optional multi-tap ballast (120, 208, 240, 277V; 120, 277, 347V in Canada).
- Consult factory for available wattages.
- Mounted in lens-up orientation, fixture is damp location rated.
- May be ordered as an accessory.
- Must specify finish when ordered as accessory.
- Must specify voltage. Not available with TB.
- SF, DF or QRS options cannot be ordered together.
- Maximum allowable wattage lamp included.
- Order MR2SR2/3HS U or MR2SR4WS U as an accessory.
- Order MR2VG U as an accessory.
- See www.lithonia.com/archcolors for additional color options.
- Must be specified.

MR2 Metal Halide, High Pressure Sodium

MR2 400M SR3 Test No. LTL10099P

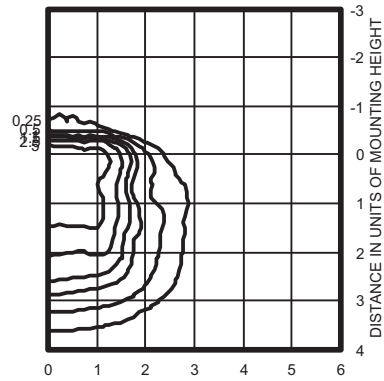
ISOILLUMINANCE PLOT (Footcandle)



400W pulse start metal halide lamp, rated 38,000 lumens. Footcandle values based on 20' mounting height.
Classification: Type III, Medium, Full Cutoff

MR2 400M SR4SC Test No. LTL10100P

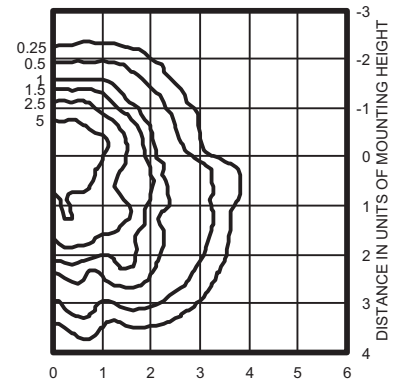
ISOILLUMINANCE PLOT (Footcandle)



400W pulse start metal halide lamp, rated 38,000 lumens. Footcandle values based on 20' mounting height.
Classification: Unclassified (Type IV, Very Short), Full Cutoff

MR2 400M SR4W Test No. LTL10101P

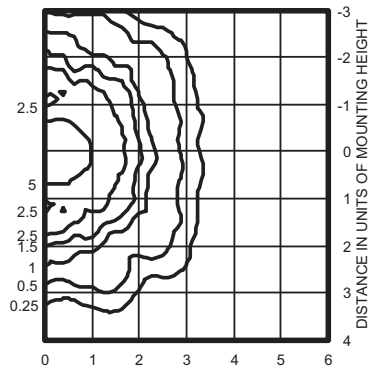
ISOILLUMINANCE PLOT (Footcandle)



400W pulse start metal halide lamp, rated 38,000 lumens. Footcandle values based on 20' mounting height.
Classification: Type IV, Short, Full Cutoff

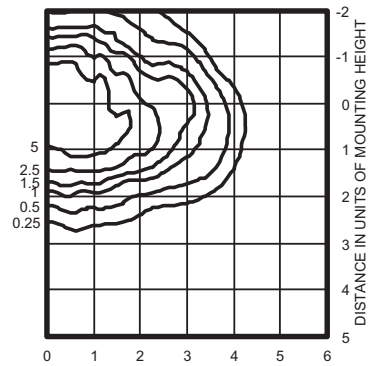
MR2 400M SR5S Test No. LTL10102P

ISOILLUMINANCE PLOT (Footcandle)



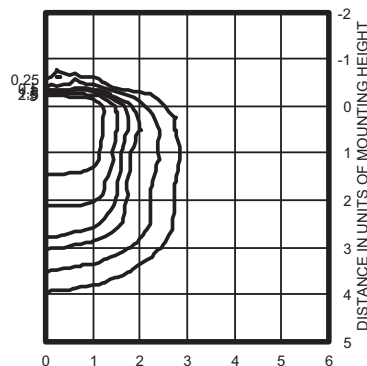
400W pulse start metal halide lamp, rated 38,000 lumens. Footcandle values based on 20' mounting height.
Classification: Unclassified (Type IV, Very Short), Full Cutoff

MR2 400S SR3 TEST NO: LTL10104



400W lamp, rated 50000 lumens. Footcandle values based on 20' mounting height.
Classification: Type II, Medium, Full Cutoff

MR2 400S SR4SC TEST NO: LTL10105



400W lamp, rated 50000 lumens. Footcandle values based on 20' mounting height.
Classification: Unclassified (Type IV, Very Short), Full Cutoff

Notes

- 1 Photometric data for other distributions can be accessed from the Lithonia Lighting web site (www.lithonia.com).
- 2 For electrical characteristics consult outdoor technical data specification sheets on www.lithonia.com.
- 3 Tested to current IESNA and NEMA standards under stabilized laboratory conditions. Various operating factors can cause differences between laboratory and actual field measurements. Dimensions and specifications are based on the most current data and are subject to change.

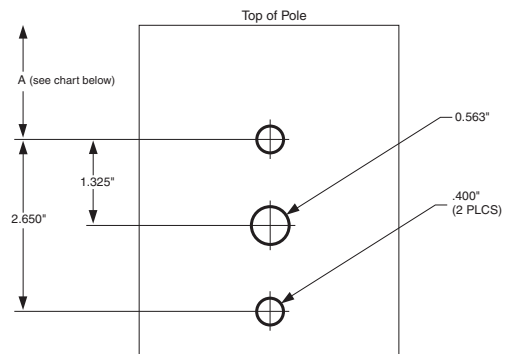
When ordering poles, specify the appropriate drilling pattern. See below example.

Example: **SSA 20 4C DM19AS**
DM19AS 1 at 90 degrees
DM28AS 2 at 180 degrees
DM29AS 2 at 90 degrees
DM39AS 3 at 90 degrees
DM49AS 4 at 90 degrees
DM32AS 3 at 120 degrees (round poles only)

DRILLING TEMPLATE # 8

AERIS™ OMER0 ALX

Pole-Mounted Luminaire (not for suspend)



"A" recommended dimension
 Aluminum Poles Only 1.750"
 All Other Pole Types 2.750"

Note: Dimension varies by pole type to allow clearance for pole cap. Check pole cap depth if field drilling poles.

NOTE: This drawing is A02 to scale and should be used for dimensional purposes only.

Bollards with fully shielded light source

Post construction: One piece extruded aluminum with a one piece die-cast aluminum top housing and a base internally welded into an assembly. All aluminum used in the construction is marine grade and copper free.

Lamp enclosure: Heavy two piece die-cast aluminum shield removable for relamping. Secured by four (4) captive stainless steel screws threaded into stainless steel inserts. Clear, $\frac{3}{16}$ " molded crystal glass diffuser. Reflector made from pure anodized aluminum. Fully gasketed using high temperature silicone rubber material.

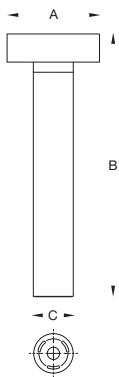
Electrical: Lampholders are G12 bi-pin socket with nickel plated contacts, rated 5 KV. Ballasts are electronic, universal voltage 120 through 277V, located on an upright bracket attached to the anchor base.

Anchor Base: Heavy die-cast aluminum, slotted for precise alignment. Bollards mount to a BEGA #895 A anchorage kit (supplied). Bollards are secured to the anchor base with one stainless steel screw.

Finish: Available in five standard BEGA colors: Black (BLK); White (WHT); Bronze (BRZ); Silver (SLV); Eurocoat (URO). To specify, add appropriate suffix to catalog number. Custom colors supplied on special orders.

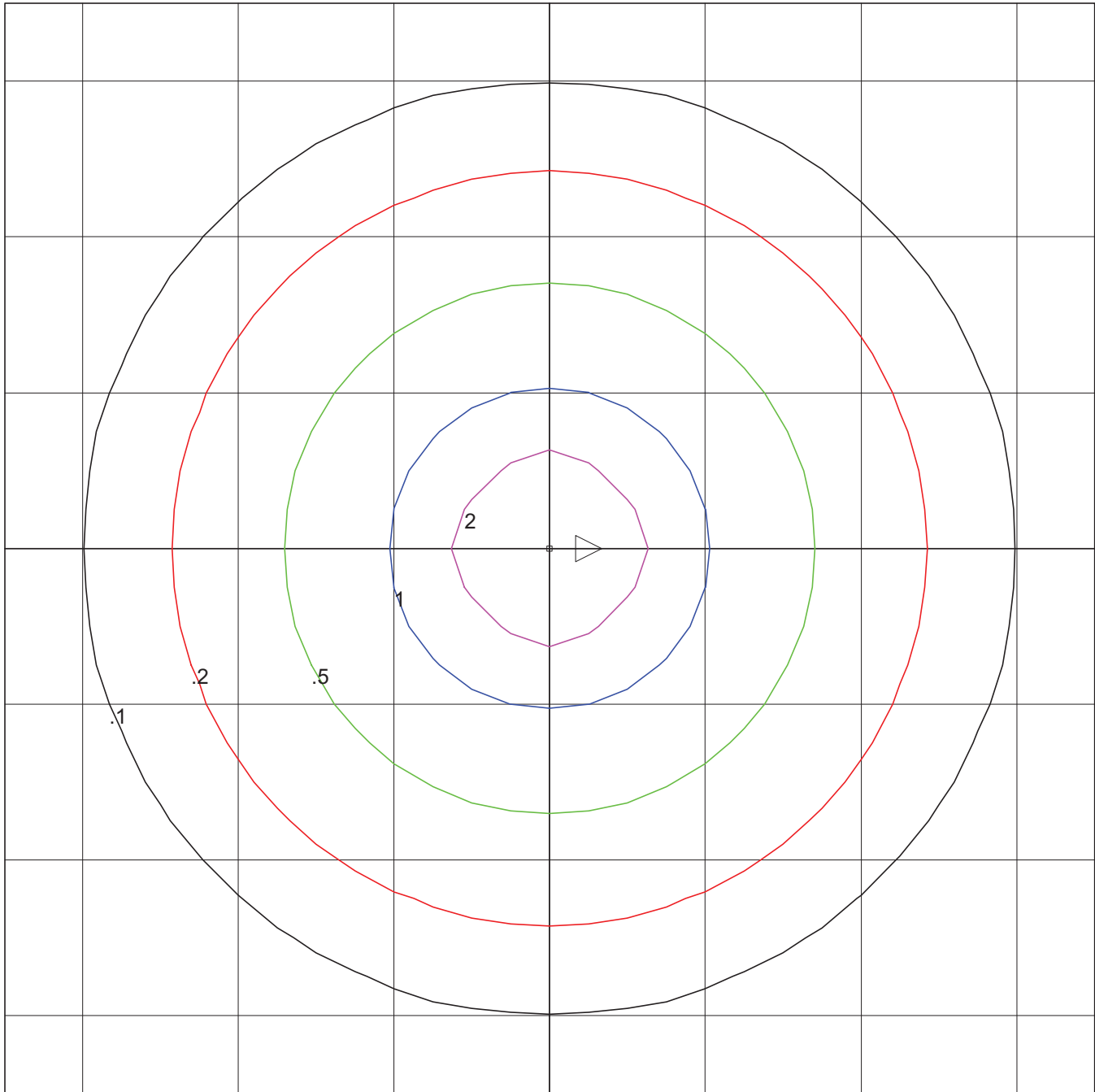
U.L. listed, suitable for wet locations. Protection class IP 65.

Type:
 BEGA Product:
 Project:
 Voltage:
 Color:
 Options:
 Modified:



	Lamp	Lumen	A	B	C	Anchorage
8476 MH	1 39W T6 G12MH	3300	10¼	31½	5½	895 A

BEGA



BEGA-US
8476MH
BOLLARD W/FULLY SHIELDED LIGHT SOURCE
(1) 39W T6 G12 MH

Horizontal Footcandles
Scale: 1 Inch = 6 Ft.
Light Loss Factor = 1.00
Total Lumens Per Luminaire = 3300
Mounting Height = 3.00 Ft
Maximum Calculated Value = 4.90 Fc
Arrangement: Single

PHOTOMETRIC FILENAME : 8476MH.IES

DESCRIPTIVE INFORMATION (From Photometric File)

BEGA-US
8476MH
BOLLARD W/FULLY SHIELDED LIGHT SOURCE
(1) 39W T6 G12 MH



TEMPLATE SPECIFICATION

Horizontal Footcandles
Scale: 1 Inch = 6 Ft.
Light Loss Factor = 1.00
Total Lumens Per Luminaire = 3300
Mounting Height = 3.00 Ft
Maximum Calculated Value = 4.90 Fc
Arrangement: Single

LUMINAIRE LAYOUT INFORMATION

<u>#</u>	<u>X</u>	<u>Y</u>	<u>Z</u>	<u>Orient</u>	<u>Tilt</u>	<u>Roll</u>	<u>Spin</u>	<u>Tilt Correction</u>
1	0.00	0.00	3.00	0.00	0.00	0.00	0.00	1.00

Consultants:

Notes:

PRELIMINARY
NOT FOR CONSTRUCTION

Date	Description	Symbol
02/08/2012	PLO / S/P SUBMITTAL	
	Revisions	

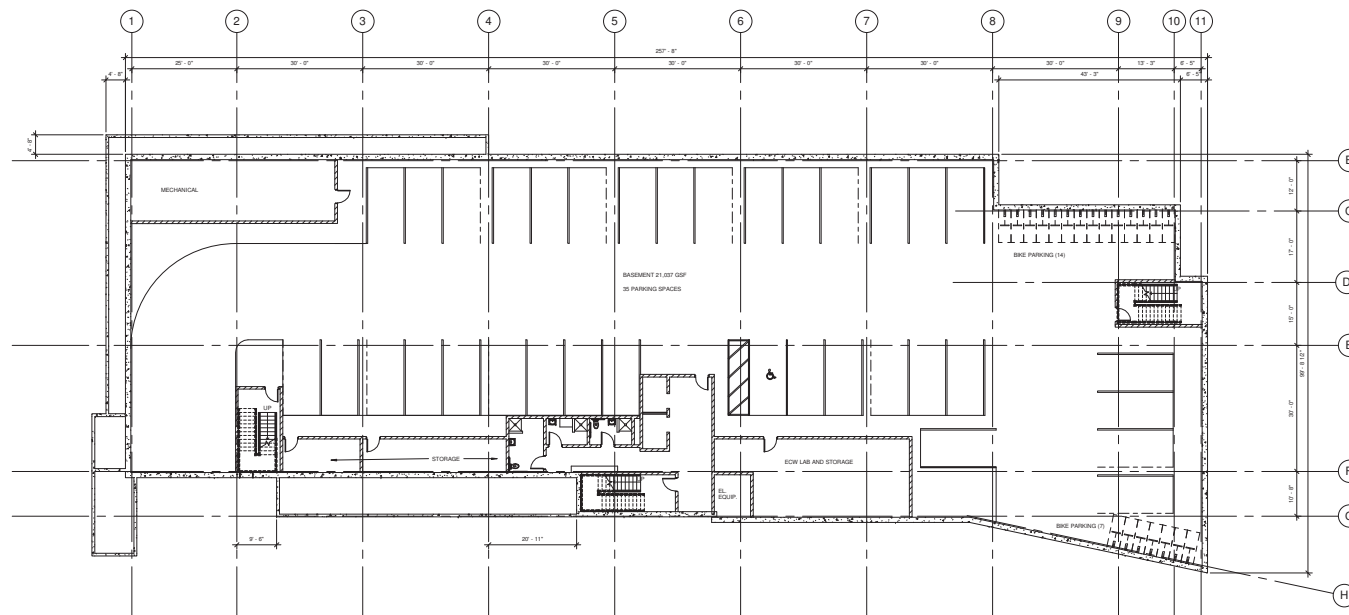
**UNIVERSITY CROSSING
BUILDING #4**
KRUPP GENERAL CONTRACTORS

725 UNIVERSITY ROW,
MADISON, WI.

LOWER LEVEL PARKING
PLAN

PLN Number:	2011.06.02	Revision:	
Drawn By:	PLC	Checked By:	

A100



1 PARKING LEVEL FLOOR PLAN
A100
3/32" = 1'-0"



Consultants:

Notes:

PRELIMINARY
NOT FOR CONSTRUCTION

Date	PLD / SP SUBMITTAL	Symbol
02/08/2012		
	Revised Plans	

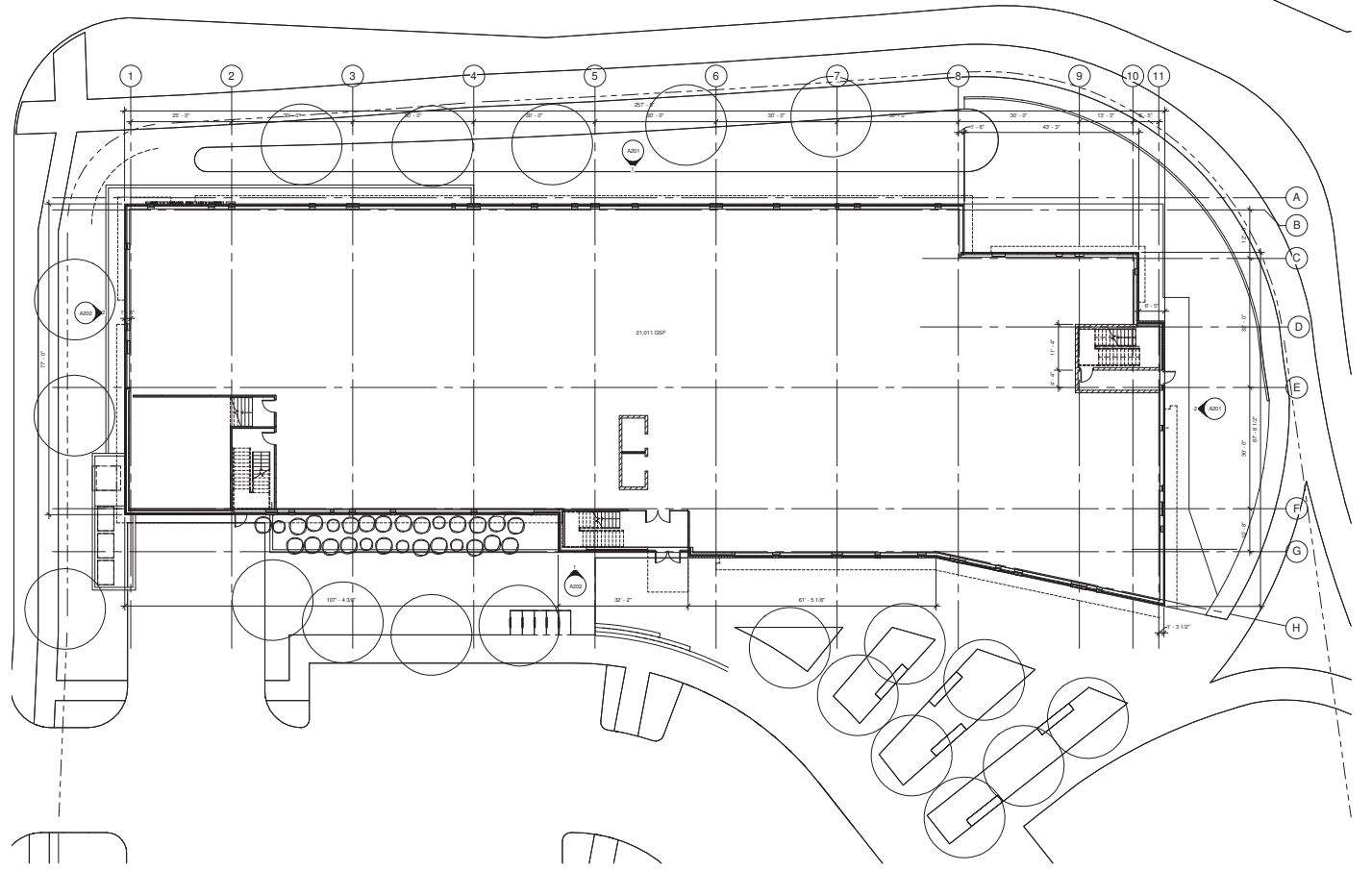
**UNIVERSITY CROSSING
BUILDING #4**
KRUPP GENERAL CONTRACTORS

725 UNIVERSITY ROW,
MADISON, WI.

Sheet No:
FIRST FLOOR PLAN

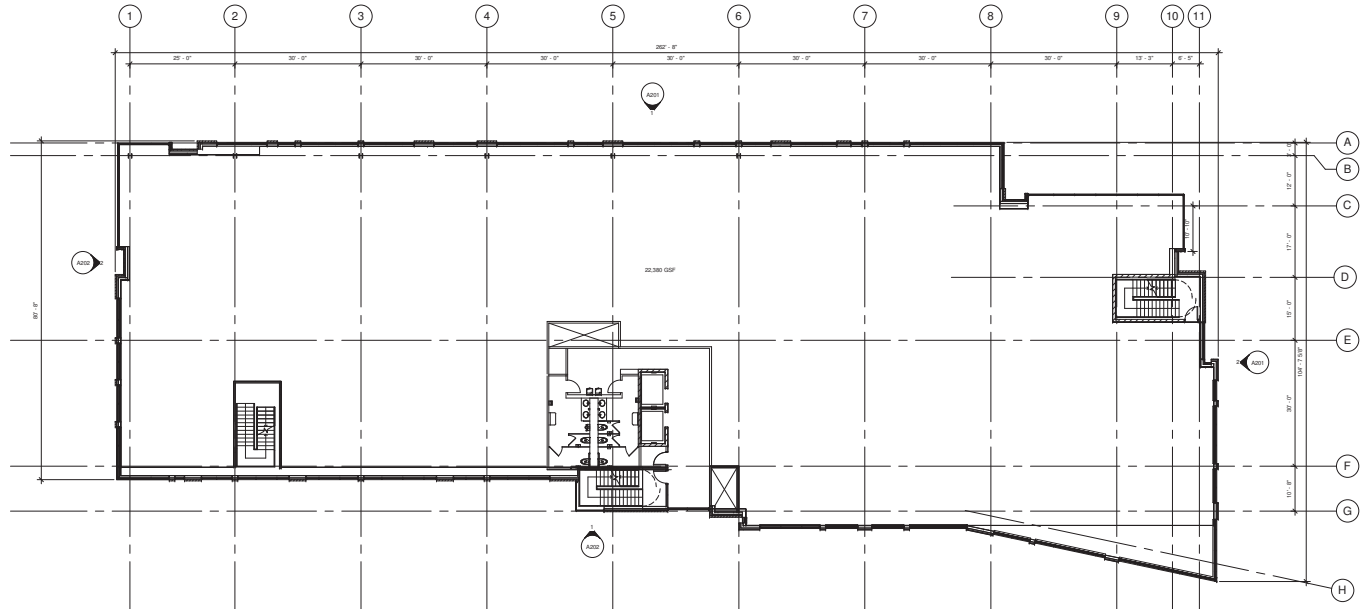
PLD / SP SUBMITTAL	Symbol
2011.06.02	
PLD	

A101



1 FIRST FLOOR PLAN
A101 3/32" = 1'-0"





1 SECOND FLOOR PLAN
A102
3/32" = 1'-0"



Consultants:

Notes:

PRELIMINARY
NOT FOR CONSTRUCTION

Date	Revision/Description	Symbol

**UNIVERSITY CROSSING
BUILDING #4**
KRUPP GENERAL CONTRACTORS

725 UNIVERSITY ROW,
MADISON, WI.

SECOND FLOOR PLAN

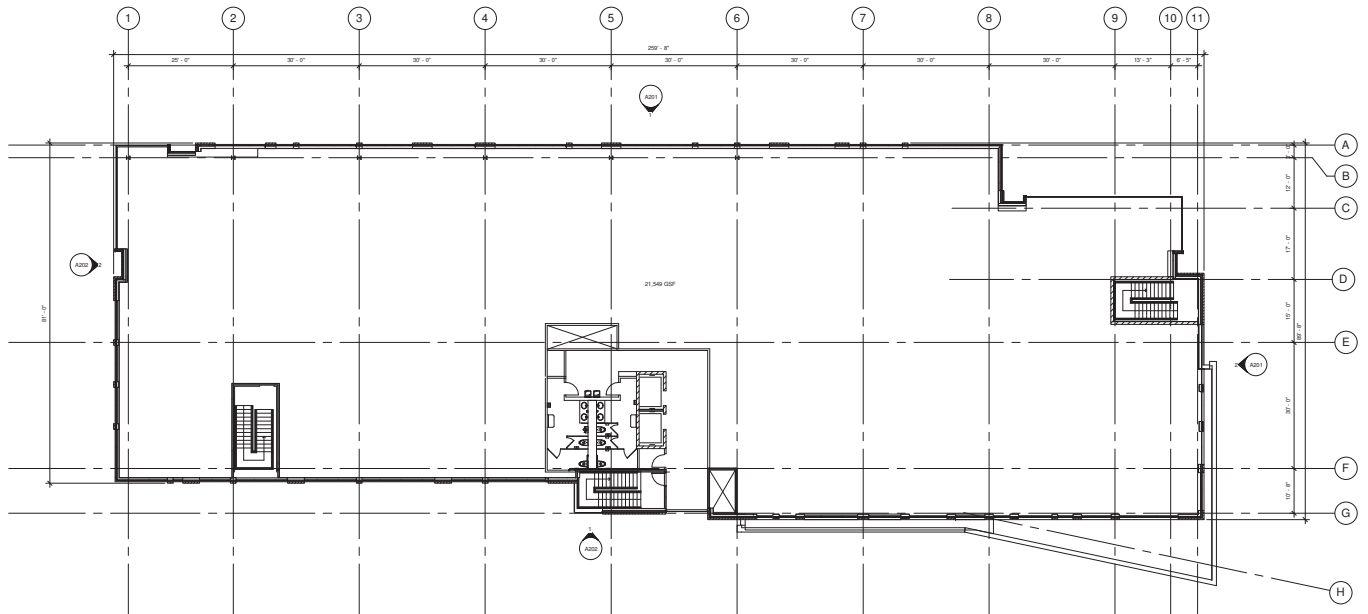
Drawn By	Checked By

A102

Consultants:

Notes:

PRELIMINARY
NOT FOR CONSTRUCTION



1 THIRD FLOOR PLAN
A103 3/32" = 1'-0"

Date	Description	Symbol

**UNIVERSITY CROSSING
BUILDING #4**
KRUPP GENERAL CONTRACTORS
725 UNIVERSITY ROW,
MADISON, WI.

THIRD FLOOR PLAN

Revision: Date: 2011.06.02 Drawn By: PLC	Approved By:
--	--------------

A103

2/20/2012 4:21:45 PM

Consultants:

Notes:

INSULATING GLASS TYPES LOG
ALL IGG TYPES ARE 2 1/2" x 1" UNLESS NOTED OTHERWISE

- IGG-A: CLEAR VISION GLASS
- IGG-B: SPANDREL
- IGG-C: CLEAR VISION GLASS - FT

KEY NOTES:

- 1 BRICK
- 2 POURED IN PLACE W/ SPECIAL FINISH
- 3 FIBER C WALL PANEL SYSTEM
- 4 METAL WALL PANEL SYSTEM
- 5 OVERHANG
- 6 ALUMINUM FRAME GLAZING SYSTEM
- 7 BUILDING SIGNAGE
- 8 METAL FASCIA
- 9 SCREEN WALL
- 10 SUNSHADE
- 11 DOOR AND FRAME
- 12 INSULATED SECTIONAL OVERHEAD DOOR
- 13 LOUVER
- 14 VERTICAL MOVEMENT JOINTS

PRELIMINARY
NOT FOR CONSTRUCTION

Date	Revision/Description	Symbol
02/08/2012	PLD / SP SUBMITTAL	

**UNIVERSITY CROSSING
BUILDING #4**
KRUPP GENERAL CONTRACTORS

725 UNIVERSITY ROW,
MADISON, WI

Building Name:
BUILDING ELEVATIONS

Project Number: 2011.06.02
Drawing No: PE
A201



2 EAST ELEVATION
A201 3/32" = 1'-0"



1 NORTH ELEVATION
A201 3/32" = 1'-0"

Consultants:

Notes:

INSULATING GLASS TYPES (IGU)
ALL IGU TYPES ARE TYPE "A" UNLESS NOTED OTHERWISE

- ◇ IGU-A: CLEAR VISION GLASS
- ◇ IGU-B: SPANDREL
- ◇ IGU-C: CLEAR VISION GLASS - FT

LEGEND:

- 1 BRICK
- 2 FORMED IN PLACE IV, SPECIAL FINISH
- 3 FIBER C WALL PANEL SYSTEM
- 4 METAL WALL PANEL SYSTEM
- 5 OVERHANG
- 6 ALUMINUM FRAME GLAZING SYSTEM
- 7 BUILDING SIGNAGE
- 8 METAL FASCIA
- 9 SCREEN WALL
- 10 SURSHADE
- 11 DOOR AND FRAME
- 12 INSULATED, SECTIONAL OVERHEAD DOOR
- 13 LOUVER
- 14 VERTICAL MOVEMENT JOINTS

PRELIMINARY
NOT FOR CONSTRUCTION

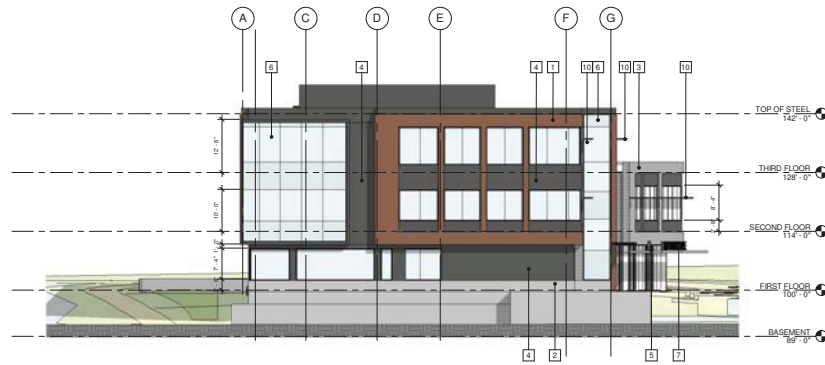
Date	PLD / S/P SUBMITTAL	Symbol
02/08/2012	Revisions	

**UNIVERSITY CROSSING
BUILDING #4**
KRUPP GENERAL CONTRACTORS

725 UNIVERSITY ROW,
MADISON, WI

Building Name:
BUILDING ELEVATIONS

PLD / S/P SUBMITTAL
2011.06.02
PLD
A202



2 WEST ELEVATION
A202 3/32" = 1'-0"



1 SOUTH ELEVATION
A202 3/32" = 1'-0"



Potter Lawson

KRUPP
GENERAL CONTRACTORS, LLC

Consultants:

Notes:

- INSULATING GLASS UNITS (IGU)**
ALL IGU UNITS ARE TYPE "A" UNLESS NOTED OTHERWISE
- ⊖ IGA-A: CLEAR VISION IGU - 1/2"
 - ⊖ IGA-B: SPANDREL
 - ⊖ IGA-C: CLEAR VISION IGU - FT

- KEYNOTES**
- 1 BRICK
 - 2 POLYMER BRICK SLATE OR CERAMIC TILE
 - 3 FIBER C WALL PANEL SYSTEM
 - 4 METAL WALL PANEL SYSTEM
 - 5 OVERHANG
 - 6 ALUMINUM FRAME GLAZING SYSTEM
 - 7 BUILDING SURNAME
 - 8 METAL FACIA
 - 9 SCREEN WALL
 - 10 SHOWER
 - 11 BRICK AND FRAME
 - 12 INSULATED SECTIONAL OVERHEAD DOOR
 - 13 LINER
 - 14 VERTICAL MOVEMENT JOINT

PRELIMINARY
NOT FOR CONSTRUCTION

UNIVERSITY CROSSING BUILDING #4
KRUPP GENERAL CONTRACTORS

UNIVERSITY CROSSING BUILDING #4
KRUPP GENERAL CONTRACTORS

725 UNIVERSITY ROW,
MADISON, WI

**BUILDING
PERSPECTIVES**

Project No. **A211**

Consultants:

Notes:

LOWER LEVEL TWO PLAN	
SP. FINISHES	65,3400SP
PARKING COUNT	
LOWER LEVEL ONE	158 STALLS
BARBER FRIEZE	2 STALLS
LOWER LEVEL ONE	132 STALLS
FIRST FLOOR	72 STALLS
BARBER FRIEZE	4 STALLS
BARBER FRIEZE	4 STALLS
PARKING TOTAL	337 STALLS
BARBER FRIEZE	6 STALLS

PRELIMINARY
NOT FOR CONSTRUCTION

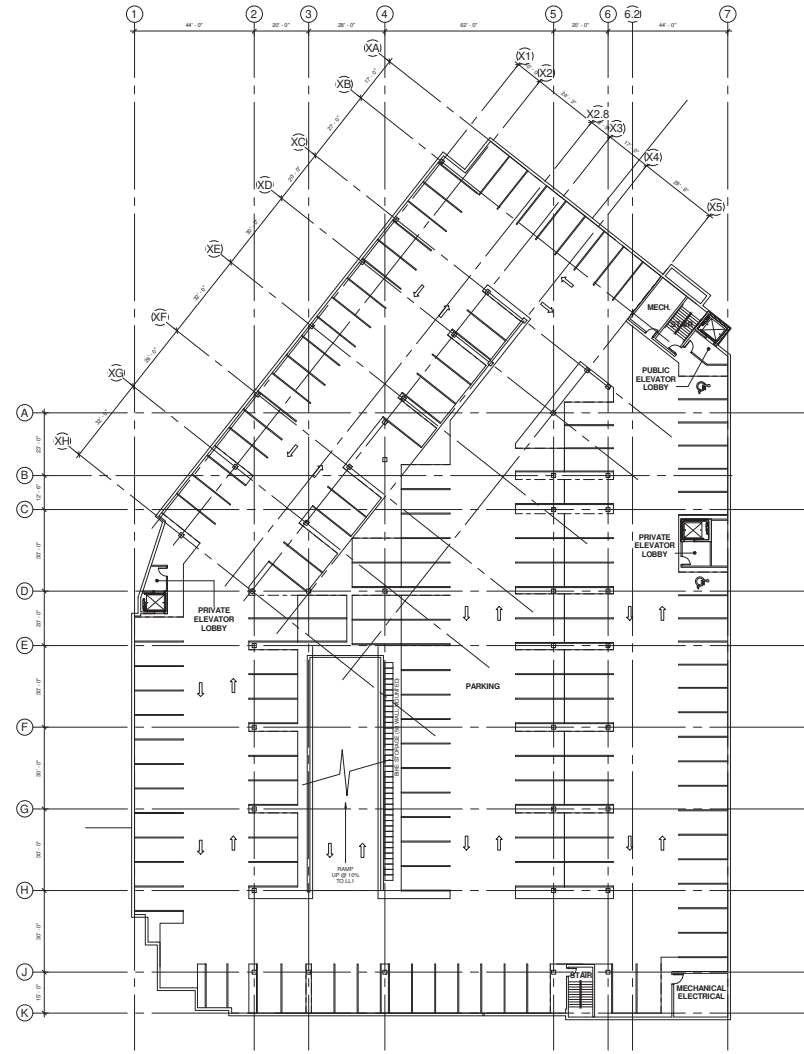
Date	Revision/Description	Symbol
02/08/12	PUD / SP SUBMITTAL	

**UNIVERSITY CROSSING
BUILDING #6
(APARTMENTS AND
PARKING STRUCTURE)**

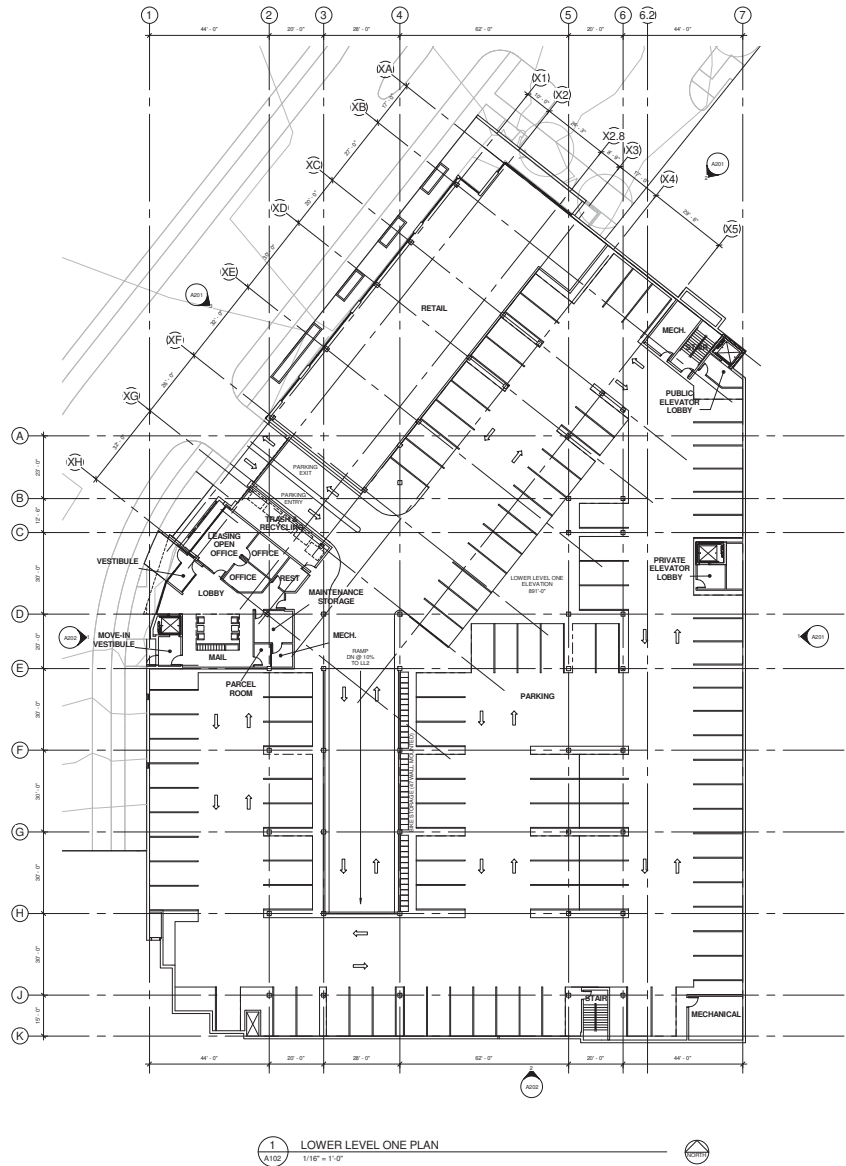
UNIVERSITY CROSSING, LLC
725 UNIVERSITY ROW
MADISON, WISCONSIN

Drawing No.
**LOWER LEVEL TWO
PLAN**

Project Number 2011.02.04	Drawing No. A101
Drawn By PL	



1 LOWER LEVEL TWO PLAN
A101 1/8" = 1'-0"



Potter Lawson



Consultants:

Notes:

LOWER LEVEL ONE PLAN

PUBLIC MECHANICAL 2.8000FP
 PUBLIC MECHANICAL 2.8000FP
 PUBLIC MECHANICAL 2.8000FP

PARKING COUNT:

LOWER LEVEL ONE 150 STALLS
 BARBER FLOOR 15 STALLS
 LOWER LEVEL ONE 15 STALLS
 FIRST FLOOR 15 STALLS
 BARBER FLOOR 4 STALLS

PARKING TOTAL: 337 STALLS
BARBER FLOOR: 6 STALLS

PRELIMINARY
 NOT FOR CONSTRUCTION

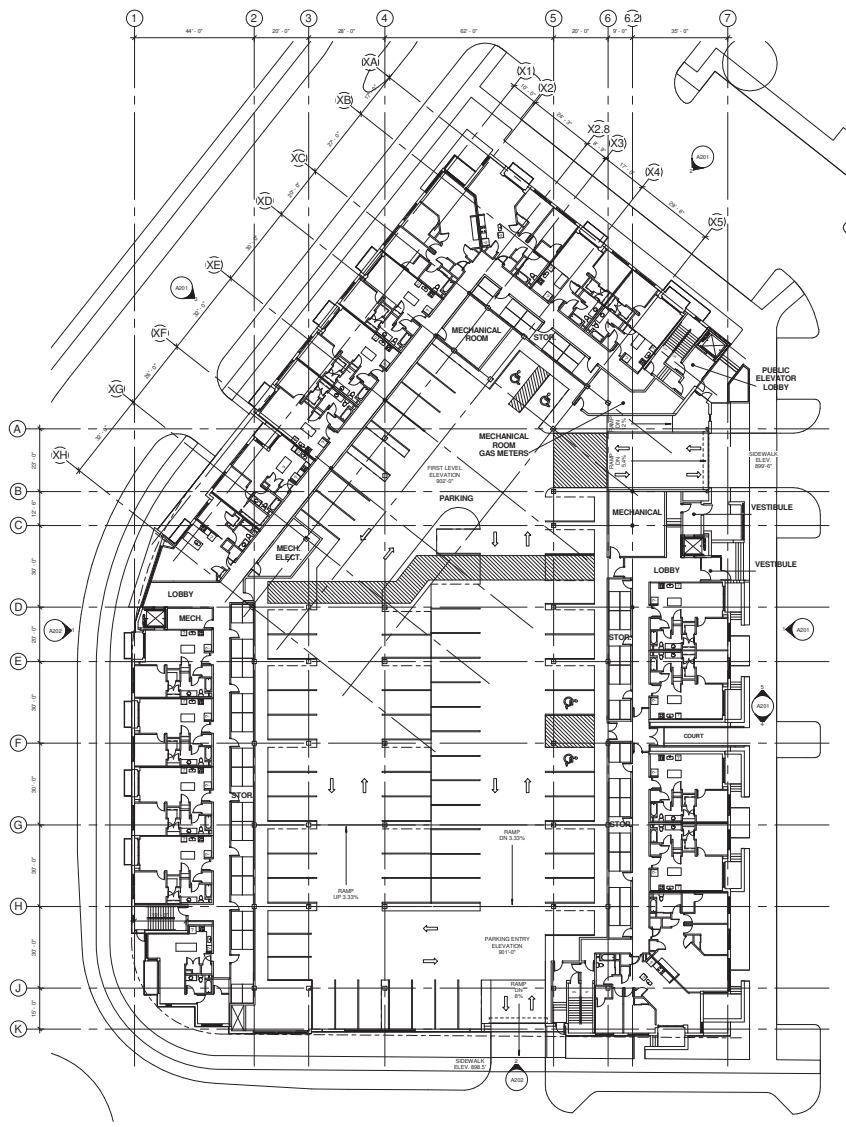
UNIVERSITY CROSSING
 BUILDING #6
 (APARTMENTS AND
 PARKING STRUCTURE)
 UNIVERSITY CROSSING, LLC.
 725 UNIVERSITY ROW
 MADISON, WISCONSIN

**LOWER LEVEL ONE
 PLAN**

Date: 2011.06.04
 Drawing No: P11

A102

27/2012 09:24:03 AM



1 FIRST FLOOR PLAN
1/16" = 1'-0"

Consultants:

Notes:

FIRST FLOOR PLAN
 1-1 RECEIVING 24,234SQP
 5-2 PARKING 33,310SQP
UNITS
 STUDY APARTMENTS 1 UNIT
 1 BDRM APARTMENTS 15 UNITS
 2 BDRM APARTMENTS 24 UNITS
 TOTAL 40 UNITS
PARKING COUNT
 GARAGE FLOOR 155 STALLS
 LOWER LEVEL ONE 112 STALLS
 FIRST FLOOR 4 STALLS
 PARKING TOTAL 307 STALLS
 BARBER FRIE 6 STALLS

PRELIMINARY
NOT FOR CONSTRUCTION

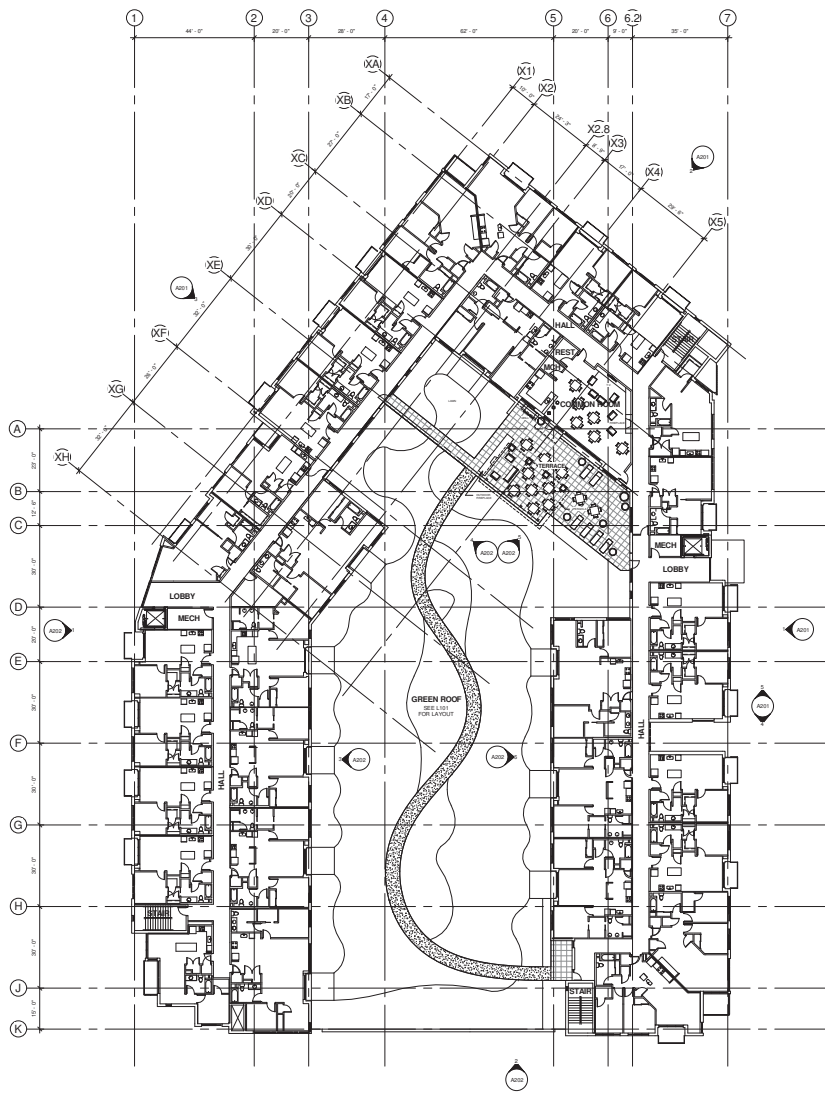
UNIVERSITY CROSSING
BUILDING #6
(APARTMENTS AND
PARKING STRUCTURE)
UNIVERSITY CROSSING, L.L.C.
725 UNIVERSITY ROW
MADISON, WISCONSIN

FIRST FLOOR PLAN

Date: 2011.06.04
Drawn By: PL

A103

© 2012 Potter Lawson Architects



1 SECOND FLOOR PLAN
1/16" = 1'-0"

Consultants:

Notes:
SECOND FLOOR PLAN
1/16" REPRESENTS 1'-0" TOTAL
UNITS
1 BEDRM APARTMENTS 18 UNITS
2 BEDRM APARTMENTS 12 UNITS
TOTAL 30 UNITS

PRELIMINARY
NOT FOR CONSTRUCTION

NO.	DATE	DESCRIPTION	BY

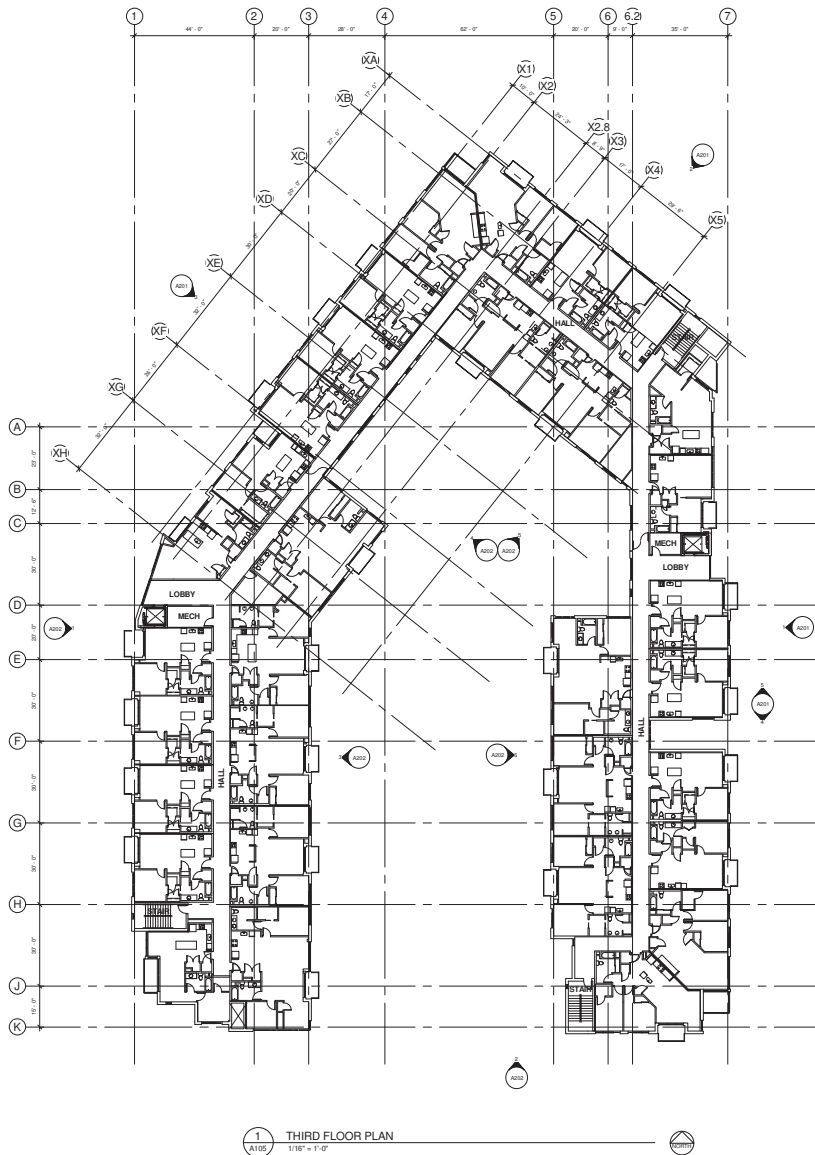
UNIVERSITY CROSSING
BUILDING #6
(APARTMENTS AND
PARKING STRUCTURE)
UNIVERSITY CROSSING, L.L.C.
725 UNIVERSITY ROW
MADISON, WISCONSIN

SECOND FLOOR PLAN

Project Number: 2011.06.04
Drawing No: A104

27/2012 8:25:20 AM

27/2012 8:25:38 AM



Potter Lawson



Consultants:

Notes:

THIRD FLOOR PLAN	34.91705P
215 PERMISSIBLE	
UNITS	
0 BEDRM APARTMENTS	0 UNITS
1 BEDRM APARTMENTS	13 UNITS
2 BEDRM APARTMENTS	14 UNITS
TOTAL	27 UNITS

PRELIMINARY
NOT FOR CONSTRUCTION

GS/12	PLD / SP SUBMITTAL	Symbols
Date	Submission/Revision	Symbols

**UNIVERSITY CROSSING
BUILDING #6
(APARTMENTS AND
PARKING STRUCTURE)**
UNIVERSITY CROSSING, L.L.C.
725 UNIVERSITY ROW
MADISON, WISCONSIN

Third Floor Plan

Sheet Name: 2011.06.04	Sheet No.:
Drawn By:	Author:

A105

Consultants:

Notes:

UNITS FLOOR PLAN	24.9.17/25P
100 PERMISSIBLE	
UNITS	
1 BEDRM APARTMENTS	14 UNITS
2 BEDRM APARTMENTS	14 UNITS
TOTAL	28 UNITS

PRELIMINARY
NOT FOR CONSTRUCTION

02/08/12	PUD / SP SUBMITTAL	
Date	Submission/Revision	Symbol

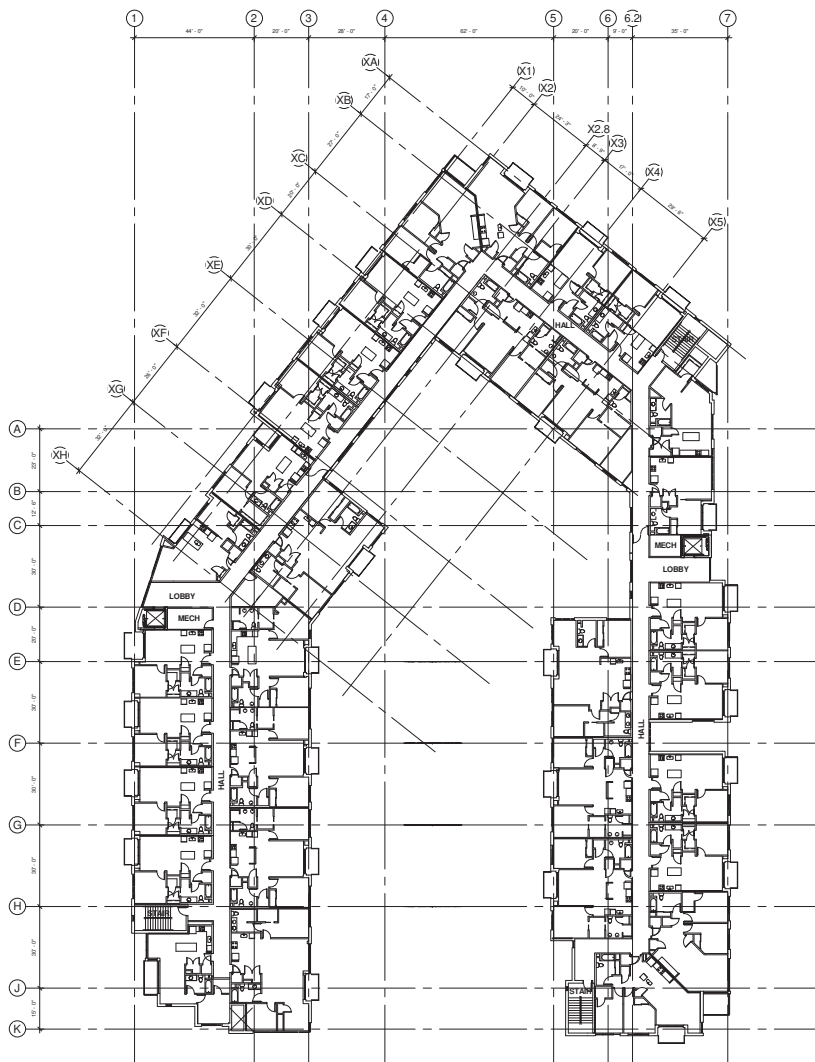
UNIVERSITY CROSSING
BUILDING #6
(APARTMENTS AND
PARKING STRUCTURE)
UNIVERSITY CROSSING, LLC
725 UNIVERSITY ROW
MADISON, WISCONSIN

Drawn by

FOURTH FLOOR PLAN

Date:
2011.06.04

A106



1 FOURTH FLOOR PLAN
A106 1/8" = 1'-0"

27/2012 9:25:52 AM



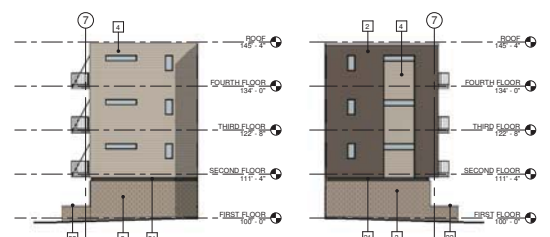
1 EAST ELEVATION
3/32" = 1'-0"



2 NORTHEAST ELEVATION
3/32" = 1'-0"



3 NORTHWEST ELEVATION
3/32" = 1'-0"



4 COURT - NORTH ELEVATION
3/32" = 1'-0"

5 COURT - SOUTH ELEVATION
3/32" = 1'-0"

Potter Lawson

KRUPP
GENERAL CONTRACTORS, LLC

Consultants:

Notes:

INSULATED GLASS TYPES 100
ALL GLU TYPES ARE 2000 ALUMINUM
BRAND FRAMEWORK

100-A-CLEAR VISION GLASS

KEY NOTES:

- 1 BRICK TYPE 1
- 2 BRICK TYPE 2
- 3 BRICK TYPE 3
- 4 FIBER CEMENT SIDING TYPE 1
- 5 FIBER CEMENT SIDING TYPE 2
- 6 FIBER CEMENT SIDING TYPE 3
- 7 FIBERGLASS WINDOW FRAMING, TYP. UON
- 8 METAL WALL PANEL - TYPE 1
- 9 METAL WALL PANEL - TYPE 2
- 10 METAL WALL PANEL - TYPE 3
- 11 ALUMINUM STOREFRONT FRAMING
- 12 HM. DOOR AND FRAME
- 13 INSULATED, COILING OVERHEAD DOOR
- 14 COVER
- 15 STORAGE AREA
- 16 METAL FASCIA, TYP. UON
- 17 GALVANIZED STEEL CHANNEL DECK WITH CONCRETE CURED GUNNARIAL, TYP. UON
- 18 GALVANIZED STEEL DECK WITH FIBER CEMENT GUNNARIAL
- 19 FIBERGLASS SLIDING PATIO DOOR, TYP. UON
- 20 ENTRY CANOPY
- 21 PAINTED STEEL CHANNEL
- 22 STONE COPING
- 23 TRANSLUCENT WALL PANEL

PRELIMINARY
NOT FOR CONSTRUCTION

03/16/10 PLO/SP SUBMITTAL
Date: Issuance/Revision: Serial:

UNIVERSITY CROSSING
BUILDING #6
(APARTMENTS AND
PARKING STRUCTURE)
UNIVERSITY CROSSING, LLC.

725 UNIVERSITY ROW
MADISON, WISCONSIN

BUILDING ELEVATIONS

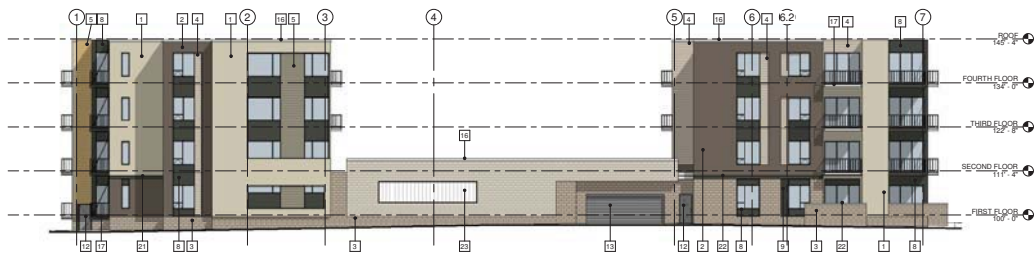
2011.05.04
A201

2/7/2012 11:23:41 AM

©2010 Potter Lawson Architects



1 WEST ELEVATION
3/32" = 1" 0"



2 SOUTH ELEVATION
3/32" = 1" 0"



3 GREENROOF - EAST ELEVATION
3/32" = 1" 0"



4 GREENROOF - SOUTHEAST ELEVATION
3/32" = 1" 0"



5 GREENROOF - SOUTH ELEVATION
3/32" = 1" 0"



6 GREENROOF - WEST ELEVATION
3/32" = 1" 0"



Consultants:

NOTES:

INSULATING GLASS TYPES USED
ALL IGT TYPES ARE TYPE "X" UNLESS NOTED OTHERWISE

◇ IGT-A CLEAR VISION GLASS

KEY NOTES:

- 1 BRICK TYPE 1
- 2 BRICK TYPE 2
- 3 BRICK TYPE 3
- 4 FIBER CEMENT SIDING TYPE 1
- 5 FIBER CEMENT SIDING TYPE 2
- 6 FIBER CEMENT SIDING TYPE 3
- 7 FIBERGLASS WINDOW FRAMING, TYP. UCN
- 8 METAL WALL PANEL - TYPE 1
- 9 METAL WALL PANEL - TYPE 2
- 10 METAL WALL PANEL - TYPE 3
- 11 ALUMINUM STOREFRONT FRAMING
- 12 H.M. DOOR AND FRAME
- 13 INSULATED GLAZING OVERHEAD DOOR
- 14 LOUVER
- 15 SIGNAGE AREA
- 16 METAL FASCIA, TYP. UCN
- 17 GALVANIZED STEEL CHANNEL BRCK WITH POWDER COATED GUARDRAIL, TYP. UCN
- 18 GALVANIZED STEEL BRCK WITH FIBER CEMENT GUARDRAIL
- 19 FIBERGLASS SLIDING PATIO DOOR, TYP. UCN
- 20 SENTRY CANOPY
- 21 PAINTED STEEL CHANNEL
- 22 STONE COPING
- 23 TRANSLUCENT WALL PANEL

PRELIMINARY
NOT FOR CONSTRUCTION

03/16/10 PLO/SP/SUBMITTAL

UNIVERSITY CROSSING
BUILDING #6
(APARTMENTS AND
PARKING STRUCTURE)
UNIVERSITY CROSSING, LLC.

725 UNIVERSITY ROW
MADISON, WISCONSIN

BUILDING ELEVATIONS

2011.06.04

A202

2/7/2010 11:27:11 AM

©2010 Potter Lawson Architects



2
A211
NORTHEAST COURTYARD PERSPECTIVE



1
A211
NORTHEAST PERSPECTIVE FROM BUILDING FOUR



4
A211
SOUTHEAST BUILDING PERSPECTIVE



3
A211
NORTHWEST BUILDING PERSPECTIVE



7
A211
SOUTHWEST BUILDING PERSPECTIVE



6
A211
WEST ENTRY PERSPECTIVE



5
A211
EAST ENTRY PERSPECTIVE

Potter Lawson

KRUPP
GENERAL CONTRACTORS, LLC

Consultants:

Notes:

PRELIMINARY
NOT FOR CONSTRUCTION

03/16/12 PUD / SFP SUBMITTAL

Date Issuance/Revision Control

UNIVERSITY CROSSING
BUILDING #6
(APARTMENTS AND
PARKING STRUCTURE)
UNIVERSITY CROSSING, LLC.

725 UNIVERSITY ROW
MADISON, WISCONSIN

BUILDING
PERSPECTIVES

2011.06.04

Project No.

A211

2/27/2012 11:01:26 AM

© 2012 Potter Lawson Architects