

Demolition - Existing Building Summary

Two on-site buildings are to be demolished along with utility infrastructure, asphalt paving and curbing. It is understood that a "Reuse and Recycling Plan" must be submitted to and approved by the City of Madison Recycling Coordinator along with a Hazardous Material Assessment prepared by an Environmental Engineer prior to any demolition activities.

NTB Store: 7,075 square foot single story building previously occupied by and operated as Nation Tire and Battery store. Exterior construction is decorative concrete masonry unit construction to parapet height at west, south and east elevations. Steel column and steel bar joist roof framing with metal stud and exterior insulation and finish system at north elevation and partial west elevation above aluminum storefront system. Concrete slab-on-grade floor construction. Roofing: single ply flat EPDM on rigid insulation.

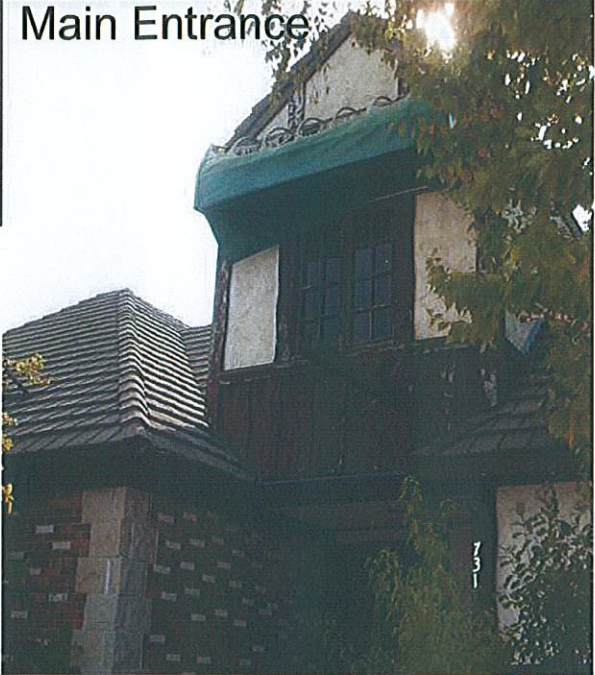
Mountain Jack Restaurant: 5,767 square foot single-story building with loft previously occupied by and operated as Mountain Jack's Restaurant. Exterior construction is load-bearing wood frame clad with stucco and brick. Roof material is combination of faux slate on gable and hip roof framing and built-up flat roof with mansards above kitchen area. Floor in concrete slab-on-grade.

Summary: Because of the existing grade separation of 11' from east to west across the site and the desire for a continuous traffic drive that is interior to the property, the site will be stripped of existing asphalt and buildings and replaced with new construction. See enclosed Sheet C-02 "Existing Conditions & Demolition Notes" for additional information regarding proposed demolition.

View Looking Southeast



Main Entrance



Mountain Jack (Vacant)

7315 west Towne Way
5,767 SF Wood framed building
One story building with loft



Interior View

View Looking East

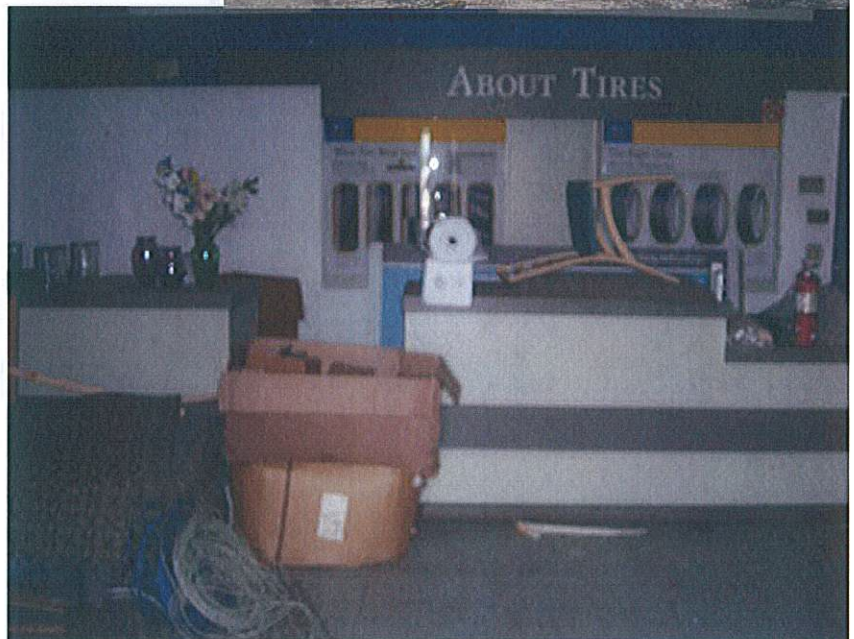


N.T.B. Store (Vacant)

7321 West Towne Way
7,075 SF Concrete Block w/ Steel Frame
One story building



View Looking East



Interior View