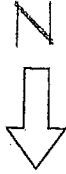
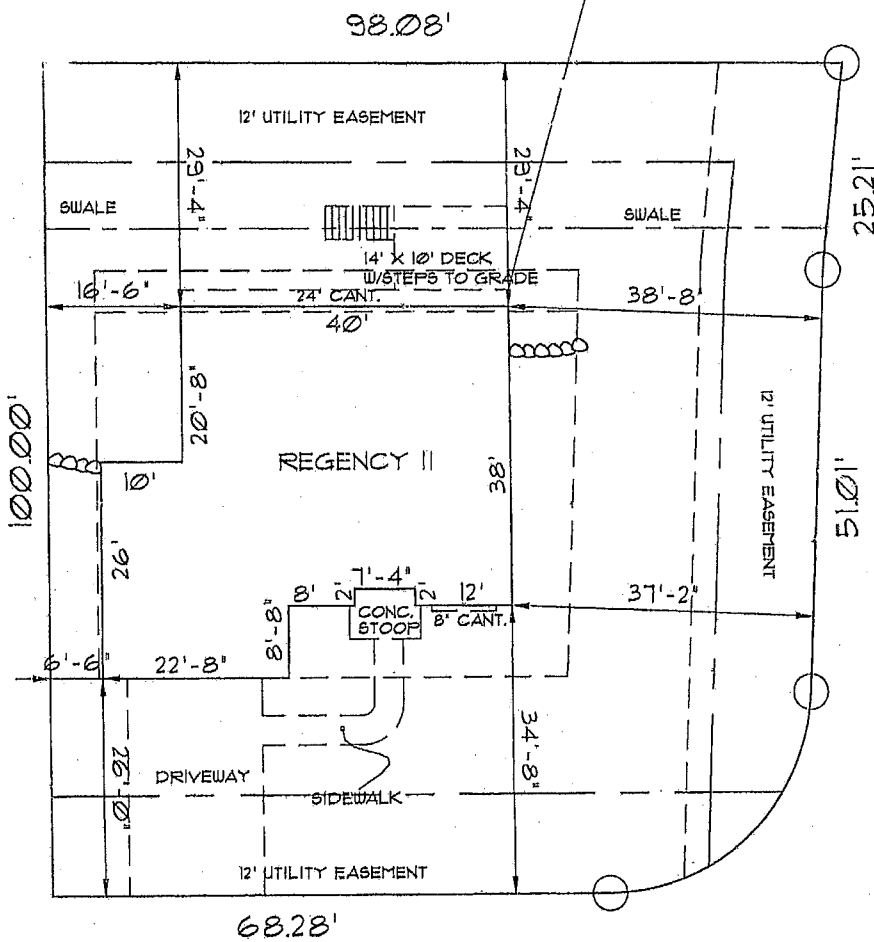


**ZONING APPROVED**  
 DATE 12-26-2008  
 BY R. Steule  
 ZONING ADMINISTRATOR-MADISON, WISCONSIN



NOTE:  
 600 LANDSCAPE  
 POINTS REQUIRED  
 FOR REAR YARD  
 VARIANCE



S. HIGHPOINT RD

TWINFLOWER DRIVE

**EXHIBIT**  
B

KEY
STD. SETBACK LINE
VARIANCE SETBACK
EASEMENT SETBACK