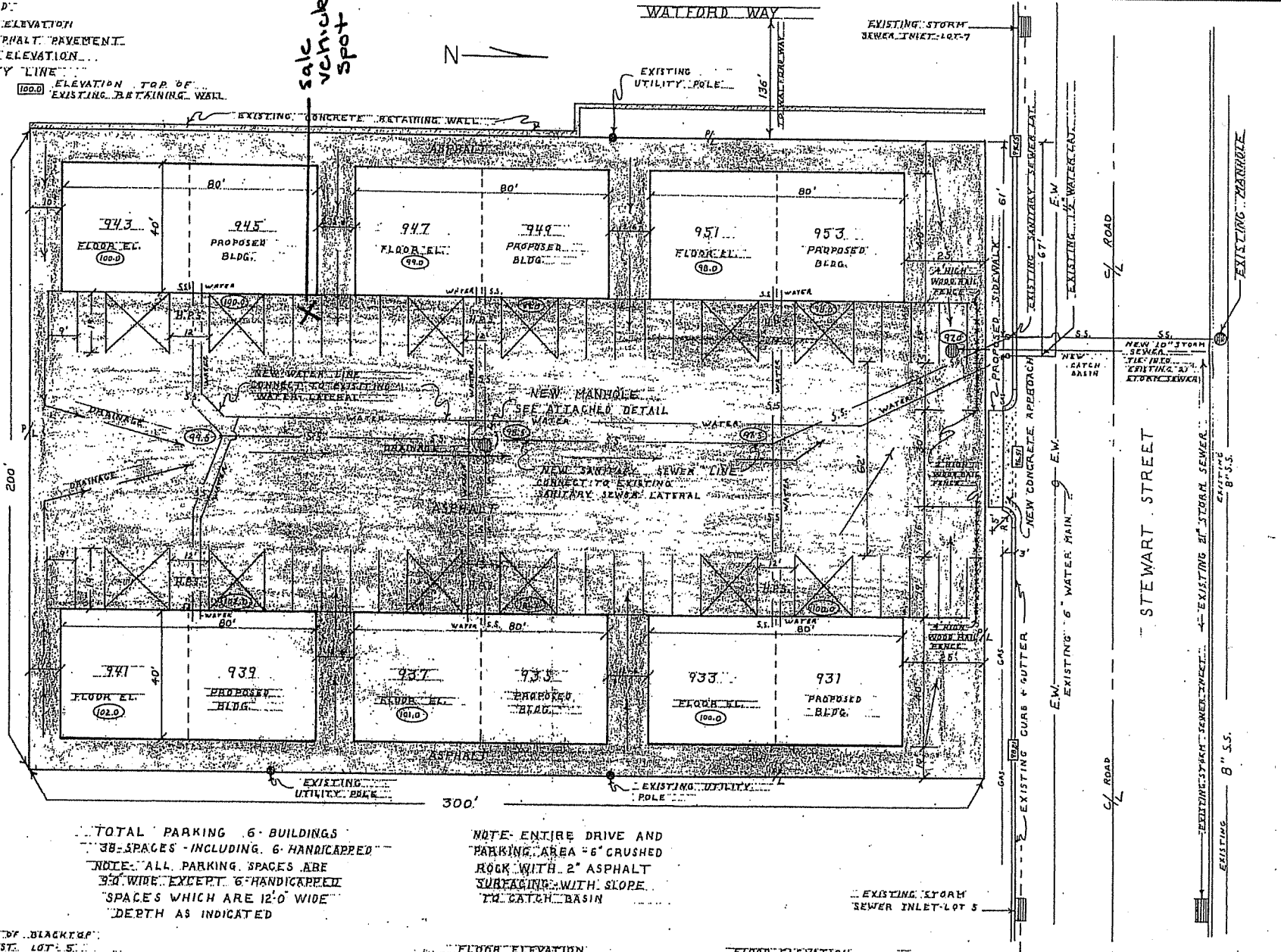


PLAT PLAN LEGEND

- EXISTING ELEVATION
- SCOPE OF ASPHALT PAVEMENT
- PROPOSED ELEVATION
- P/L PROPERTY LINE

100.0 ELEVATION TOP OF EXISTING RETAINING WALL

sale vehicle spot



CITY OF MADISON	
PARKING FACILITIES APPROVED	Conditionally
Zoning Plan	Boys 3/1/80
Trac & Plat	7/1/80
Rolls	7/1/80
Final Plat	3/1/80

Arnold E. Miller

TOTAL PARKING 6 BUILDINGS
38 SPACES INCLUDING 6 HANDICAPPED
NOTE: ALL PARKING SPACES ARE
9'-0" WIDE EXCEPT 6 HANDICAPPED
SPACES WHICH ARE 12'-0" WIDE
DEPTH AS INDICATED

NOTE: ENTIRE DRIVE AND
PARKING AREA TO BE CRUSHED
ROCK WITH 2" ASPHALT
SUBFACING WITH SLOPE
TO CATCH BASIN

100.0 ELEVATION TOP OF BLACKTOP
919 STEWART ST. LOT 5

102.0 FLOOR ELEVATION
929 STEWART ST. LOT 5

100.0 FLOOR ELEVATION
929 STEWART ST. LOT 5

PLOT PLAN LOT-6 WATSON COMMERCIAL + INDUST. PLAT.		
SCALE: 1" = 20'	APPROVED BY:	DRAWN BY: DTN
DATE: 11-27-79	REVISED:	
JOE DANIELS CONSTRUCTION CO. INC.		
901 STEWART ST. MADISON, WIS. 53713		
	DRAWING NUMBER	1