

HIGHLANDS COMMUNITIES

Senior Rental Residences

City of Madison, Dane County, Wisconsin

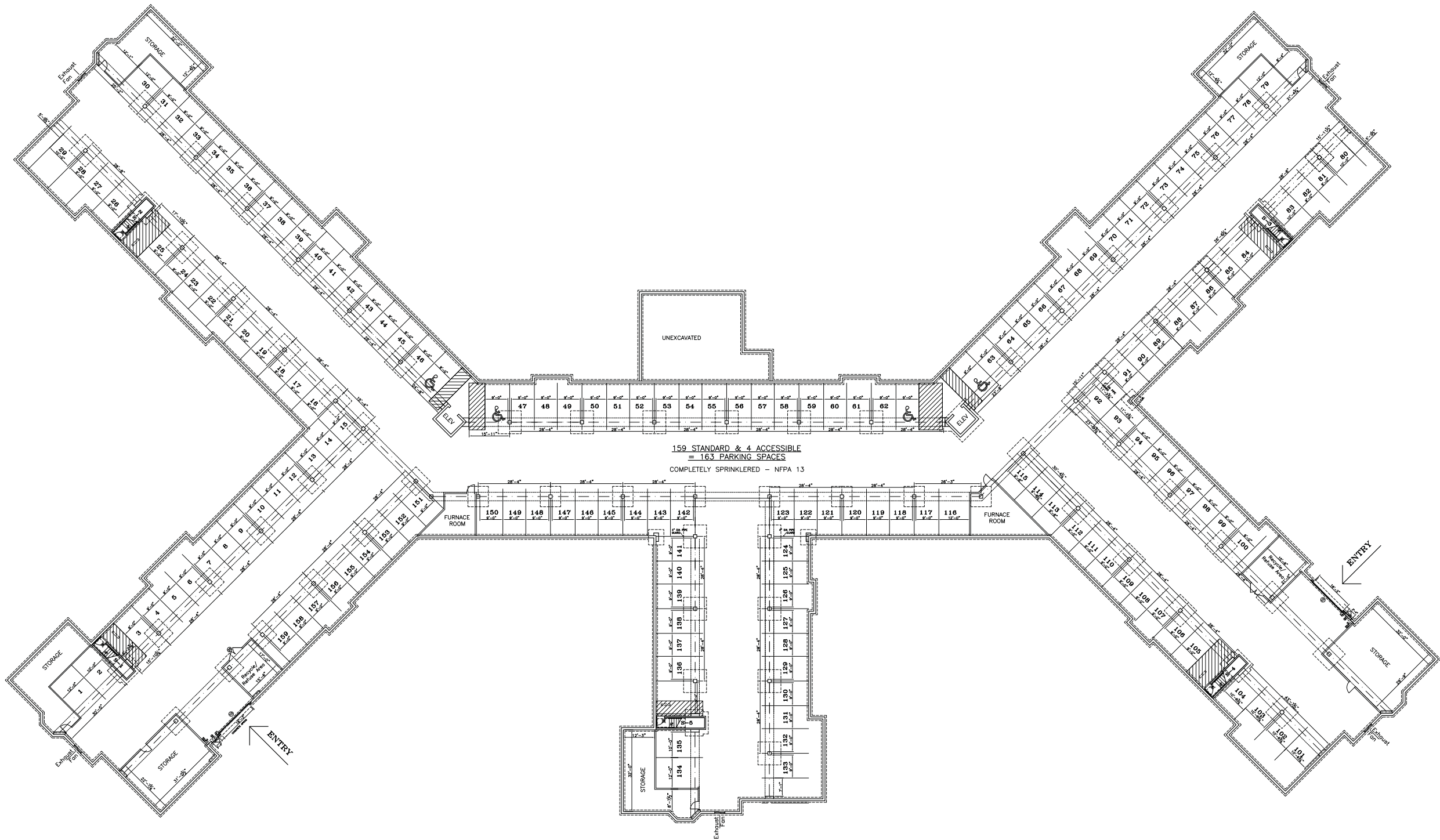
REVISIONS

This drawing, its design concept and its details are the sole property of U.F.G. Inc. and shall not be copied in any form or manner without written authorization of its designer/creator. Copyright Applied For by United Financial Group, Inc.

SCHULER & ASSOCIATES, INC.
 LAND SURVEYORS & ENGINEERS
 2711 N. MASON STREET, Suite F APPLETON, WI 54914-2126 (920) 734-9107

HIGHLANDS COMMUNITIES
 Senior Rental Residences
 City of Madison, Wisconsin
Basement/Foundation Plan
 United Financial Group Inc., 660 W. Ridgeview Drive, Appleton, WI 54911

DRAWN	CIS
DATE	02-21-13
SCALE	1" = 20'
JOB NO.	4192
SHEET	1

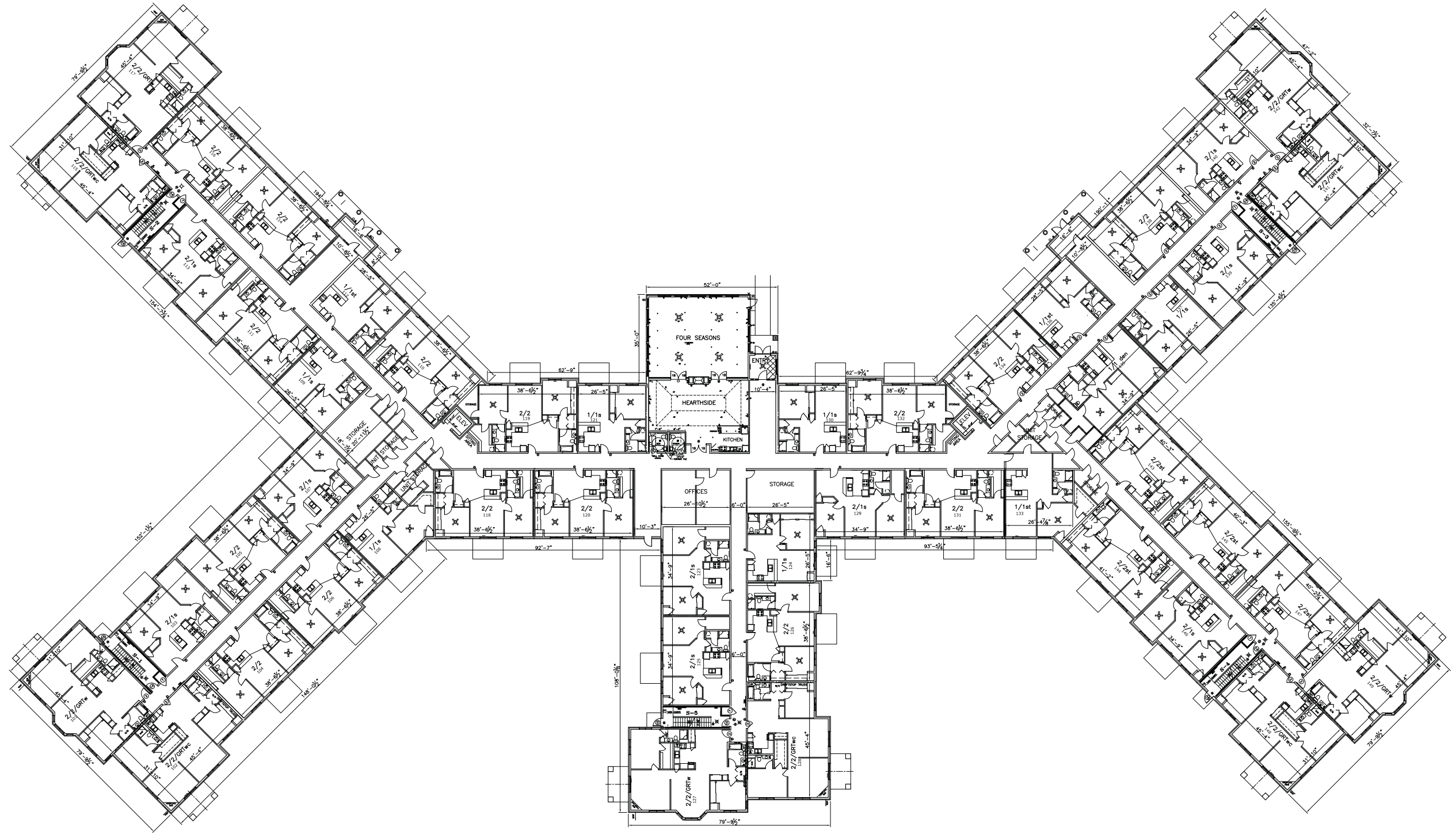


Basement/Foundation Plan
 SCALE: 1"=20'

HIGHLANDS COMMUNITIES

Senior Rental Residences

City of Madison, Dane County, Wisconsin



REVISIONS

This drawing, its design concept and its details are the sole property of U.F.G. Inc. and shall not be copied in any form or manner without written authorization of its designer/creator. Copyright Applied For by United Financial Group, Inc.

SCHULER & ASSOCIATES, INC.
LAND SURVEYORS & ENGINEERS
 2711 N. MASON STREET, Suite F APPLETON, WI 54914-2126 (920) 734-9107

HIGHLANDS COMMUNITIES
 Senior Rental Residences
 City of Madison, Wisconsin
First Floor Plan
 United Financial Group Inc., 660 W. Ridgeview Drive, Appleton, WI 54911

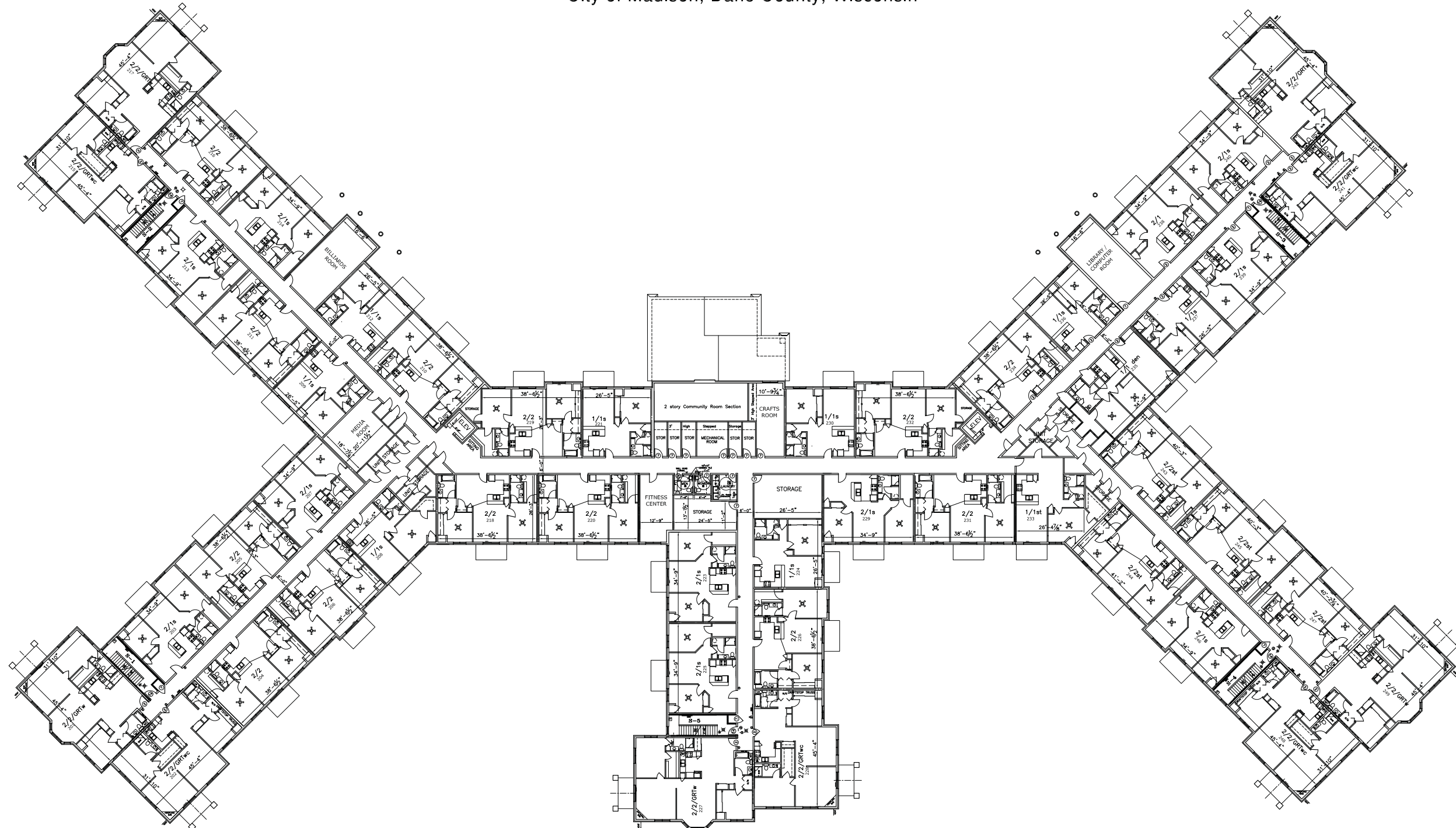
DRAWN: CFS
 DATE: 02-21-13
 SCALE: 1" = 20'
 JOB NO.: 4192
 SHEET: 1

First Floor Plan
 SCALE: 1"=20'

HIGHLANDS COMMUNITIES

Senior Rental Residences

City of Madison, Dane County, Wisconsin



Second Floor Plan
SCALE: 1"=20'

REVISIONS

SCHULER & ASSOCIATES, INC.
LAND SURVEYORS & ENGINEERS
2711 N. MASON STREET, Suite F APPLETON, WI 54914-2126 (920) 734-9107

HIGHLANDS COMMUNITIES
Senior Rental Residences
City of Madison, Wisconsin
Second Floor Plan
United Financial Group Inc., 660 W. Ridgeway Drive, Appleton, WI 54911

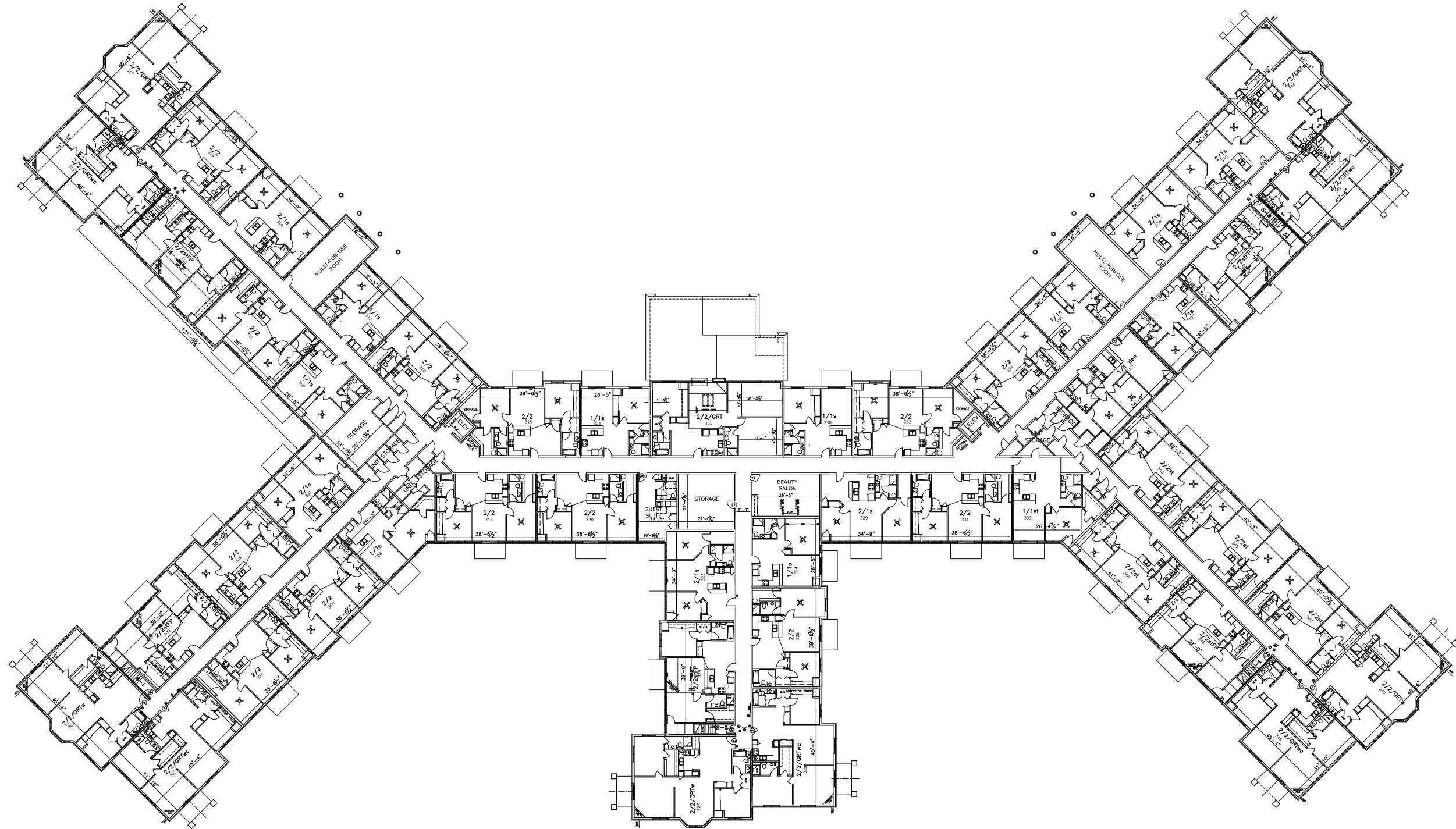
DRAWN	crs
DATE	02-21-13
SCALE	1" = 20'
JOB NO.	4192
SHEET	2

C:\Users\Owenn\Desktop\UFGE\UF0104152P\HIGHLANDS\192_2ndFloor-2-22-13.rvt.dwg 2/22/2013 4:32:25 PM

HIGHLANDS COMMUNITIES

Senior Rental Residences

City of Madison, Dane County, Wisconsin



Third Floor Plan
SCALE: 1"=20'

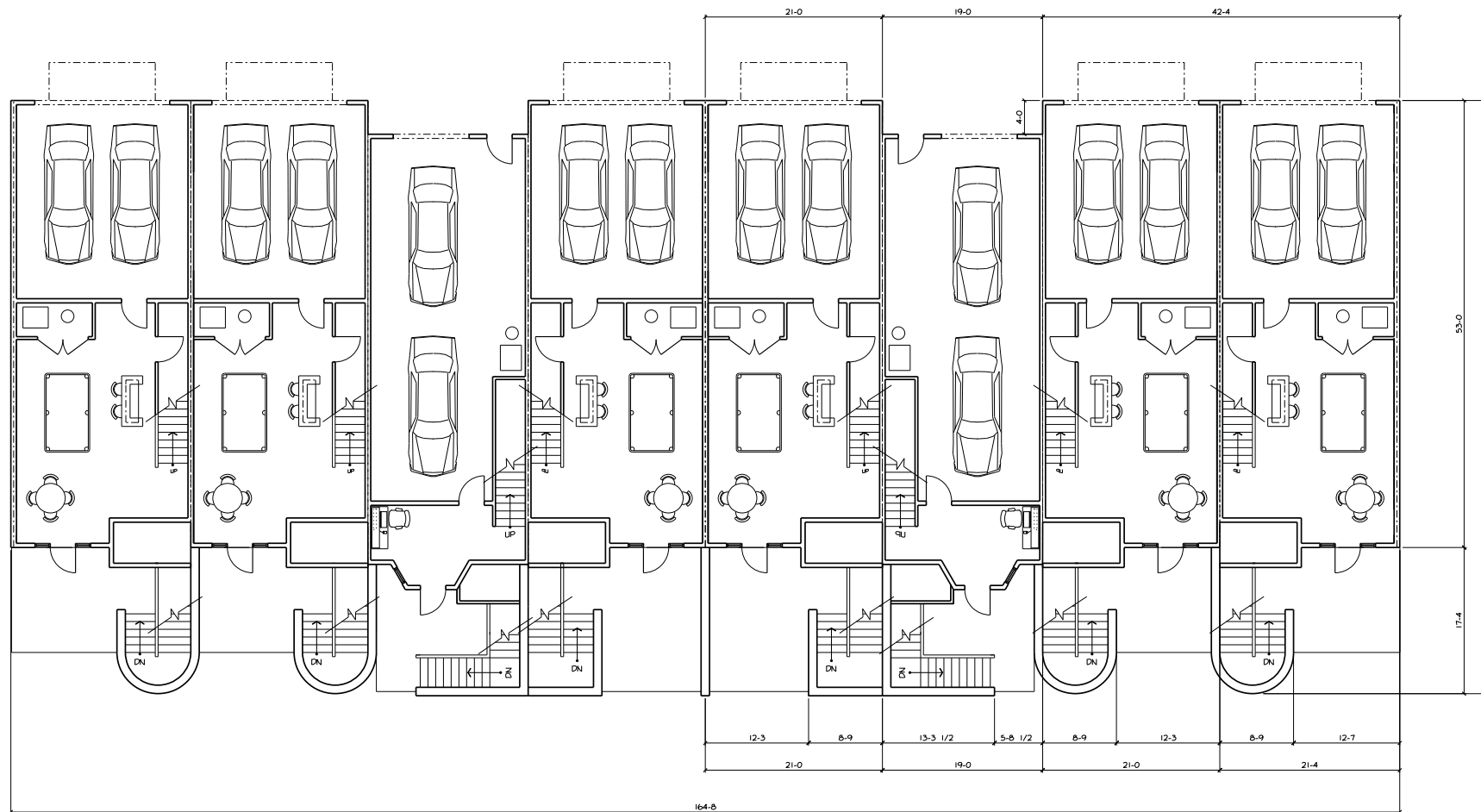
REVISIONS

This drawing, its design concept and its details are the sole property of U.F.G. Inc. and shall not be copied in any form or manner without written authorization of its designer/creator. Copyright Applied for by United Financial Group, Inc.

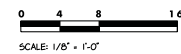
SCHULER & ASSOCIATES, INC.
LAND SURVEYORS & ENGINEERS
2711 N. MASON STREET, Suite F APPLETON, WI 54914-2126 (920) 734-9107

HIGHLANDS COMMUNITIES
Senior Rental Residences
City of Madison, Wisconsin
Third Floor Plan
United Financial Group Inc., 660 W. Ridgeway Drive, Appleton, WI 54911

DRAWN	crs
DATE	02-21-13
SCALE	1" = 20'
JOB NO.	4192
SHEET	3



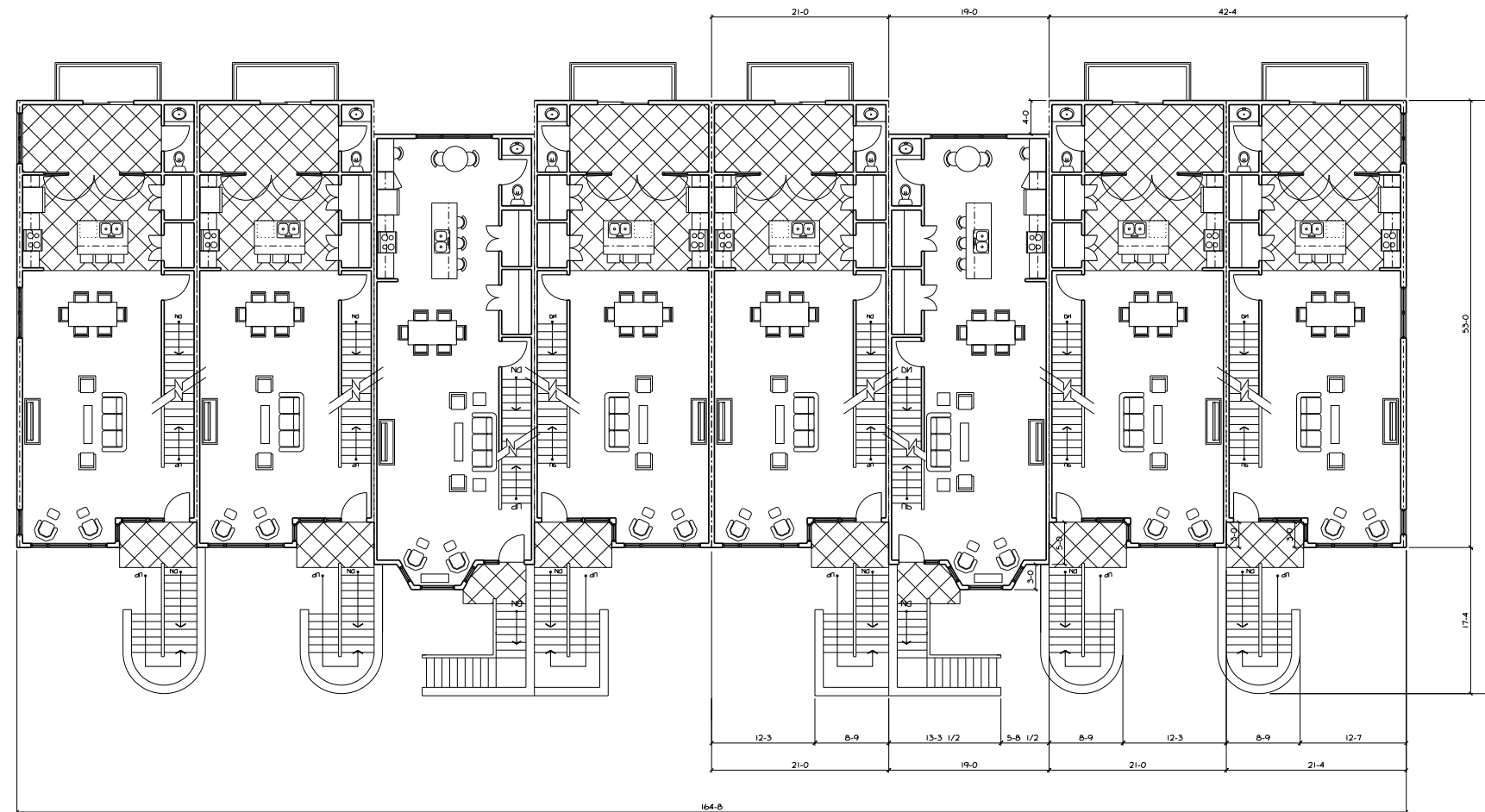
First Floor Plan



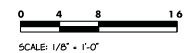
Proposed Highlands Community
8 Unit Rowhouses
Madison, Wisconsin

20 Feb 2013





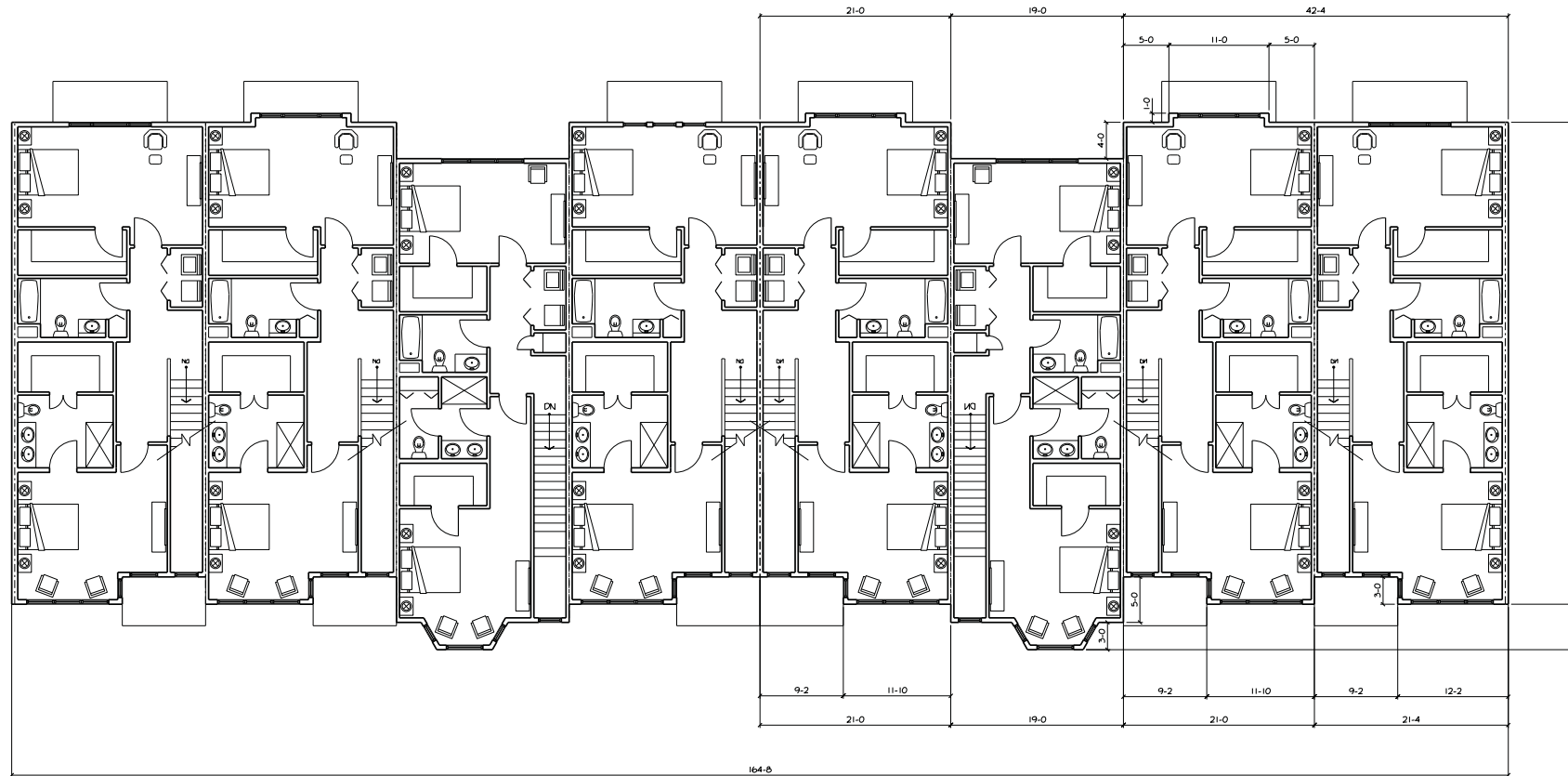
Second Floor Plan



Proposed Highlands Community
8 Unit Rowhouses
Madison, Wisconsin

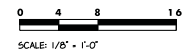
20 Feb 2013





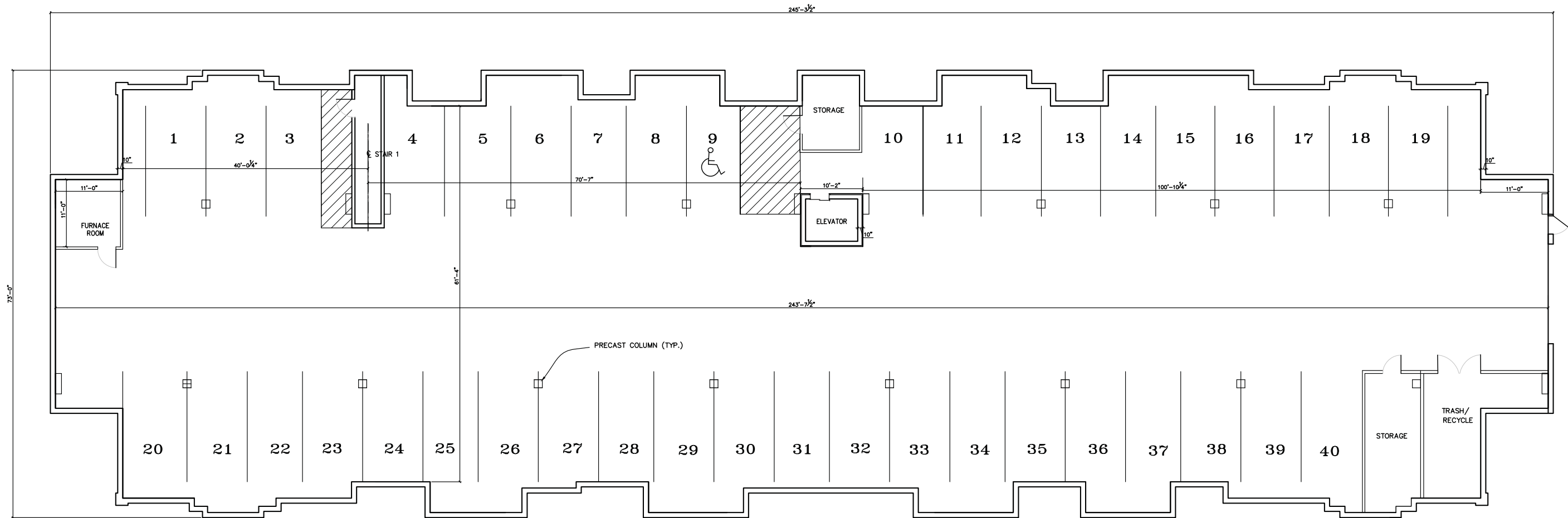
20 Feb 2013

Third Floor Plan

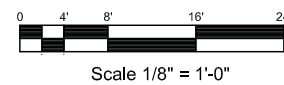


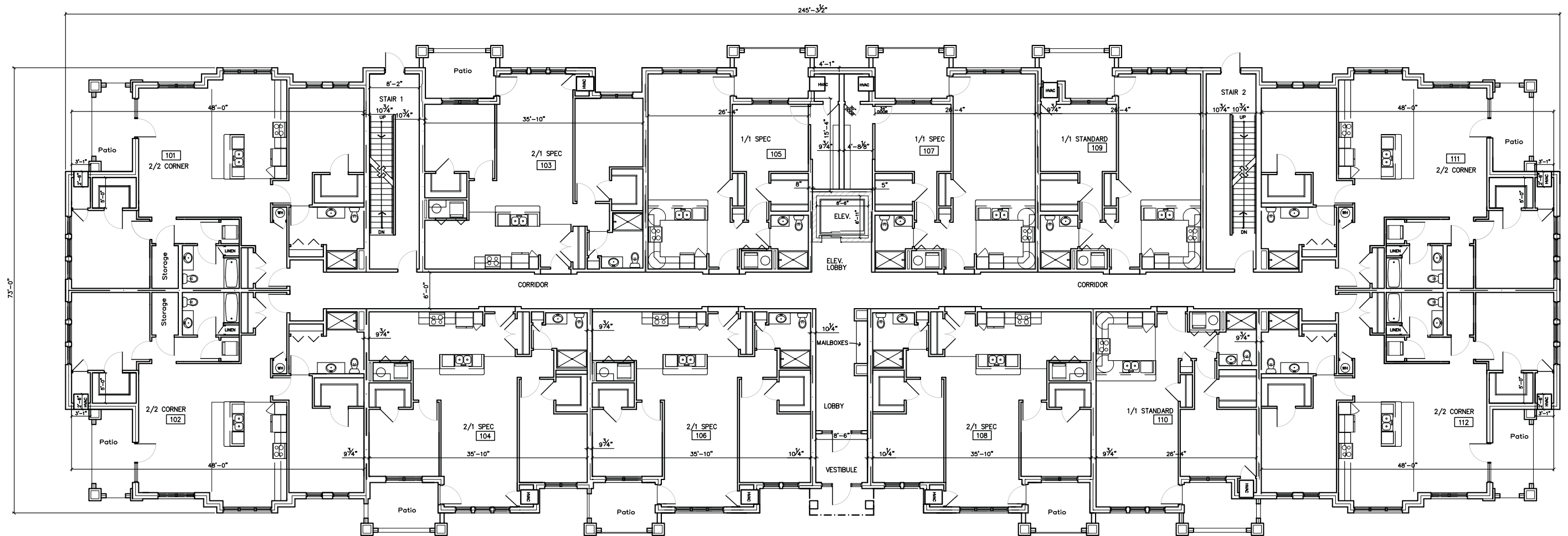
Proposed Highlands Community
8 Unit Rowhouses
Madison, Wisconsin



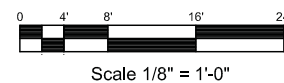


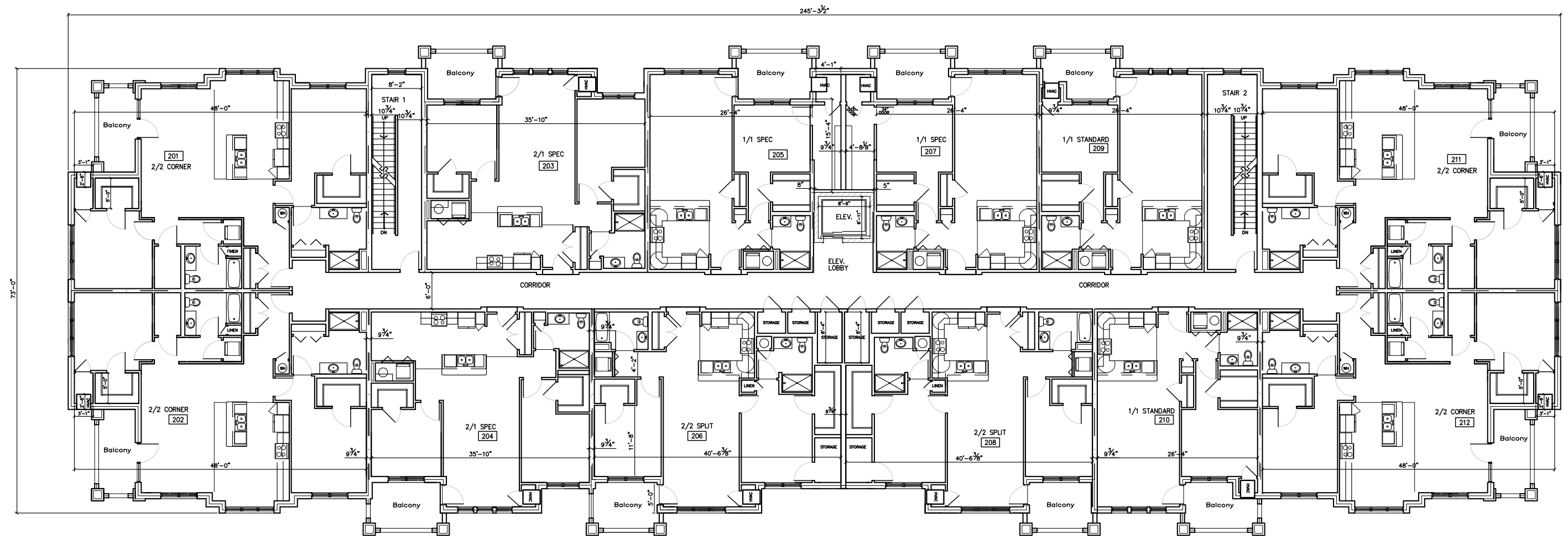
Proposed Highlands Community
 36-Unit Rental Residences
 Madison, Wisconsin
 Parking Garage/Basement Plan





Proposed Highlands Community
 36-Unit Rental Residences
 Madison, Wisconsin
 First Floor Plan

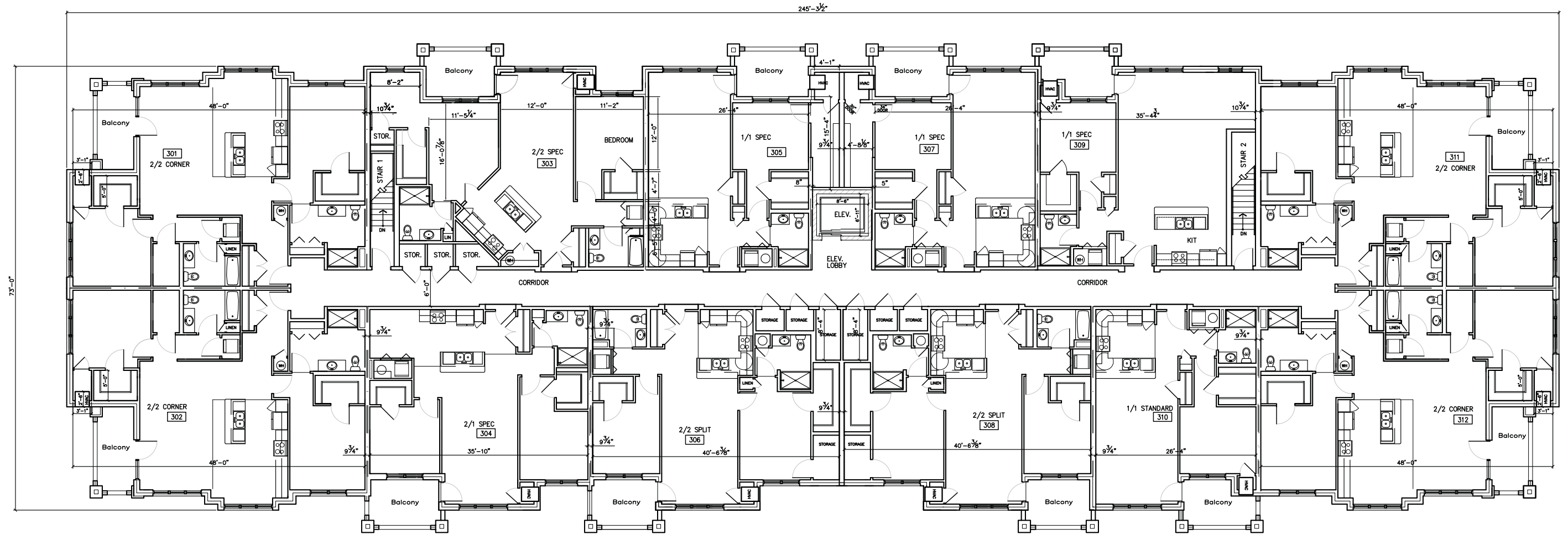




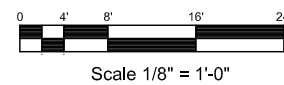
Proposed Highlands Community
 36-Unit Rental Residences
 Madison, Wisconsin
 Second Floor Plan

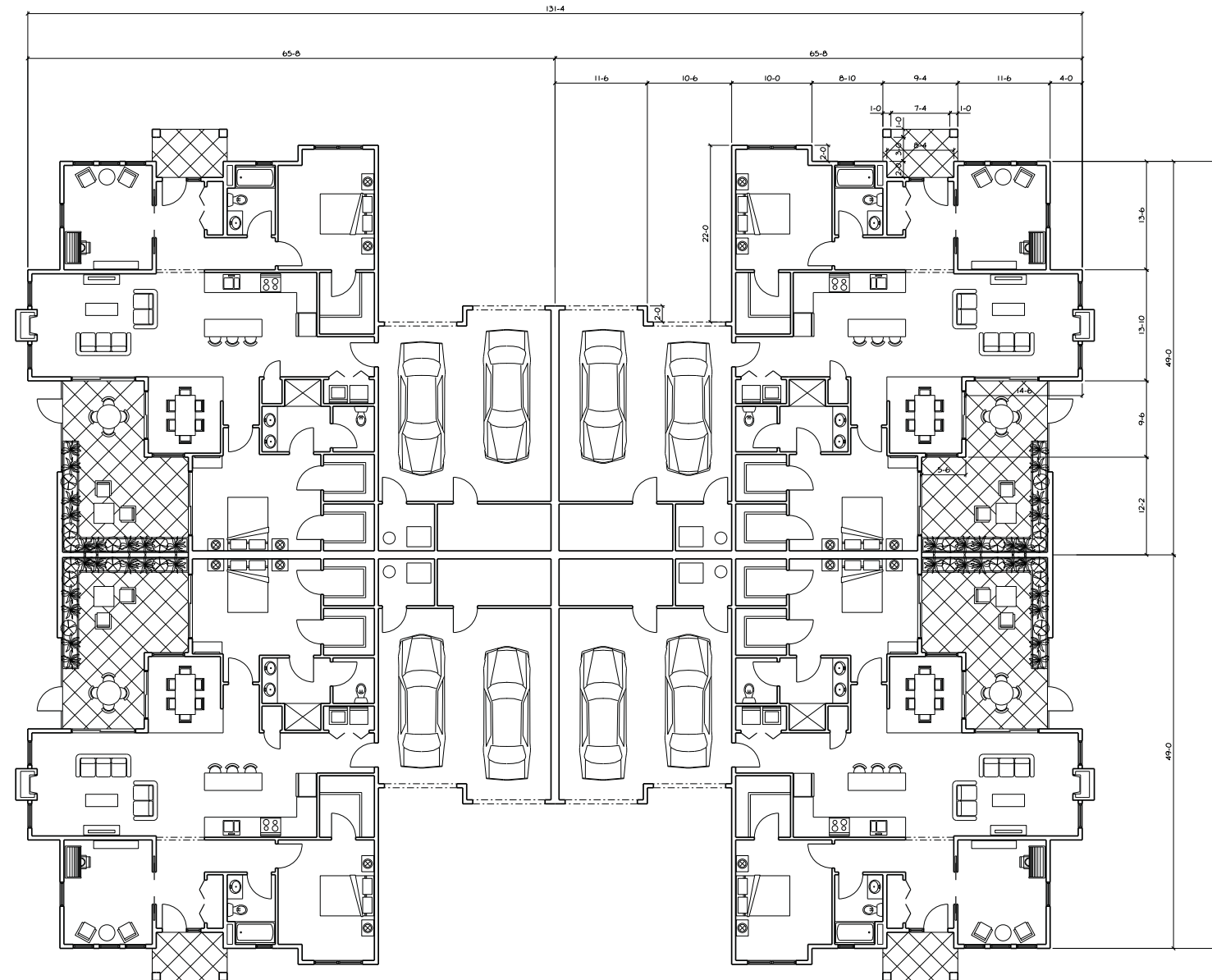


Scale 1/8" = 1'-0"

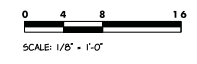


Proposed Highlands Community
 36-Unit Rental Residences
 Madison, Wisconsin
 3rd Floor Plan





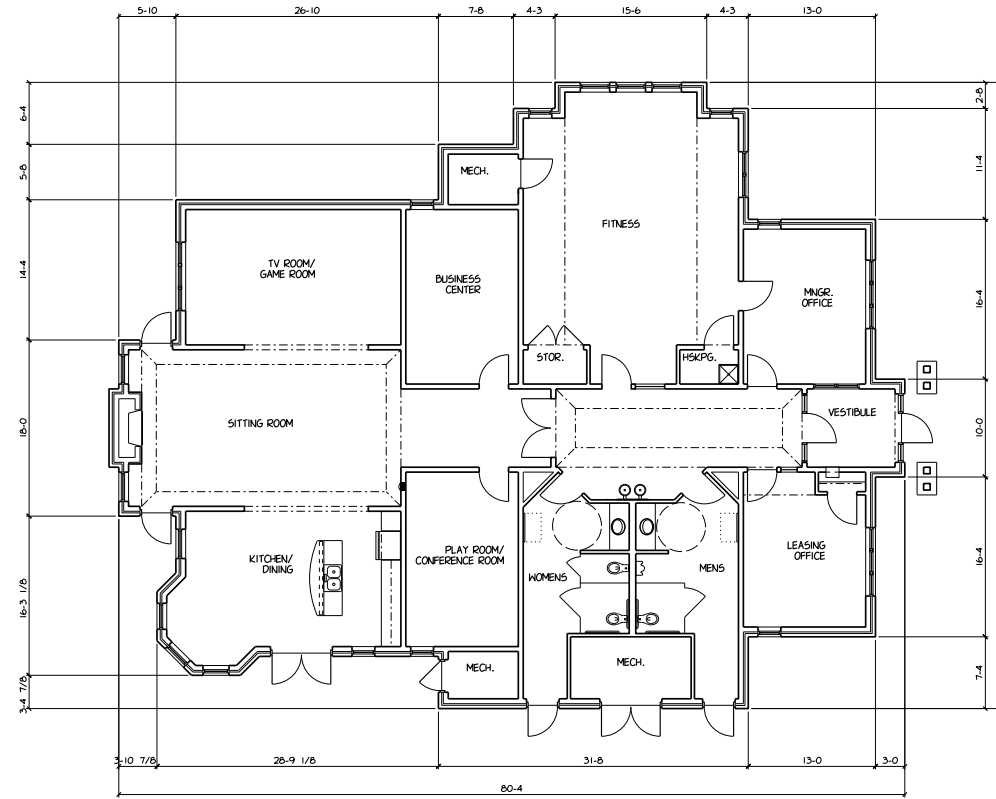
Floor Plan



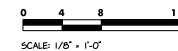
Proposed Highlands Community
4 Unit Condominiums
Madison, Wisconsin

20 Feb 2013





Floor Plan



20 Feb 2013

*Proposed Highlands Community
Community Center
Madison, Wisconsin*

