

LEGEND:

SAN	- EXISTING SANITARY SEWER
○	- EXISTING SANITARY MANHOLE
W	- EXISTING WATER MAIN
⊕	- EXISTING HYDRANT
ST	- EXISTING STORM SEWER
○	- EXISTING STORM MANHOLE
○	- EXISTING STORM INLET
○	- PROPOSED SANITARY SEWER
○	- PROPOSED SANITARY MANHOLE
---	- PROPOSED WATER MAIN
⊕	- PROPOSED HYDRANT
•	- PROPOSED WATER VALVE
---	- PROPOSED STORM SEWER
○	- PROPOSED STORM MANHOLE
○	- PROPOSED STORM INLET
▲	- PROPOSED STORM END SECTION

SANITARY SEWER AND WATER MAIN NOTES:

- ALL MATERIALS SHALL BE APPROVED BY THE CITY OF MADISON PUBLIC WORKS DEPARTMENT PRIOR TO INSTALLATION.
- ALL WATER MAIN PIPING SHALL BE AWWA C-900 PVC.
- BUILDINGS WITH 4 OR MORE UNITS SHALL HAVE 6" PVC C-900 PIPE WATER SERVICES.
- BUILDINGS CONTAINING 2 UNITS SHALL HAVE 2" PE WATER SERVICES.
- SANITARY SEWER MAIN PIPE SHALL BE 8" PVC SDR-35.
- ALL SANITARY SEWER SHALL BE CONSTRUCTED SUCH THAT VERTICAL AND HORIZONTAL SEPARATION ARE MAINTAINED PER THE STANDARD SPECIFICATIONS FOR WATER AND SEWER MAIN CONSTRUCTION IN WISCONSIN.
- BUILDING SANITARY SEWER LATERALS SHALL BE 6" PVC INSTALLED AT 1/4" PER FT. MINIMUM SLOPE FROM THE MAIN UNLESS INDICATED OTHERWISE ON THE PLANS.

H:\C300\311\12041-01\PRELIMINARY\CIVIL-UTILITY PLANS-PRELIM_ELDERBERRY-22X34.DWG

CONTRACTOR IS REQUIRED TO CONTACT DIGGERS HOTLINE TOLL FREE TO OBTAIN LOCATION OF UNDERGROUND UTILITIES PRIOR TO COMMENCING THE WORK. WISCONSIN STATUTE 182.0715 REQUIRES MIN. OF 3 WORK DAYS NOTICE BEFORE YOU EXCAVATE
CALL DIGGERS HOTLINE 1-800-242-8511

NOTE:
EXISTING UNDERGROUND UTILITY INFORMATION WAS OBTAINED FROM AVAILABLE RECORDS. THE ENGINEER MAKES NO GUARANTEE AS TO THE ACCURACY OF THIS INFORMATION. VERIFICATION TO THE SATISFACTION OF THE CONTRACTOR OF ALL UNDERGROUND UTILITIES, WHETHER OR NOT SHOWN ON THE PLANS, SHALL BE ASSUMED AS A CONDITION OF THE CONTRACT. THE CONTRACTOR SHALL NOTIFY THE ENGINEER OF ANY DISCREPANCIES BETWEEN LOCATION OF UTILITIES IN THE FIELD AND LOCATIONS SHOWN ON THE PLANS.



PROJECT:
HIGHLANDS COMMUNITY
ELDERBERRY NEIGHBORHOOD
CITY OF MADISON, WI

BY: United Financial Group, Inc.
660 W. Ridgeway Drive
Appleton, WI 54911

REVISION HISTORY

DATE	DESCRIPTION

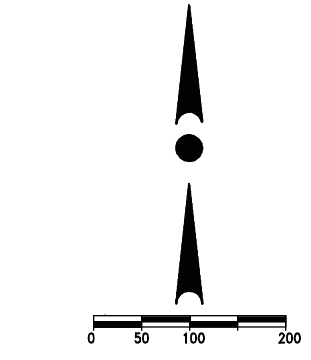
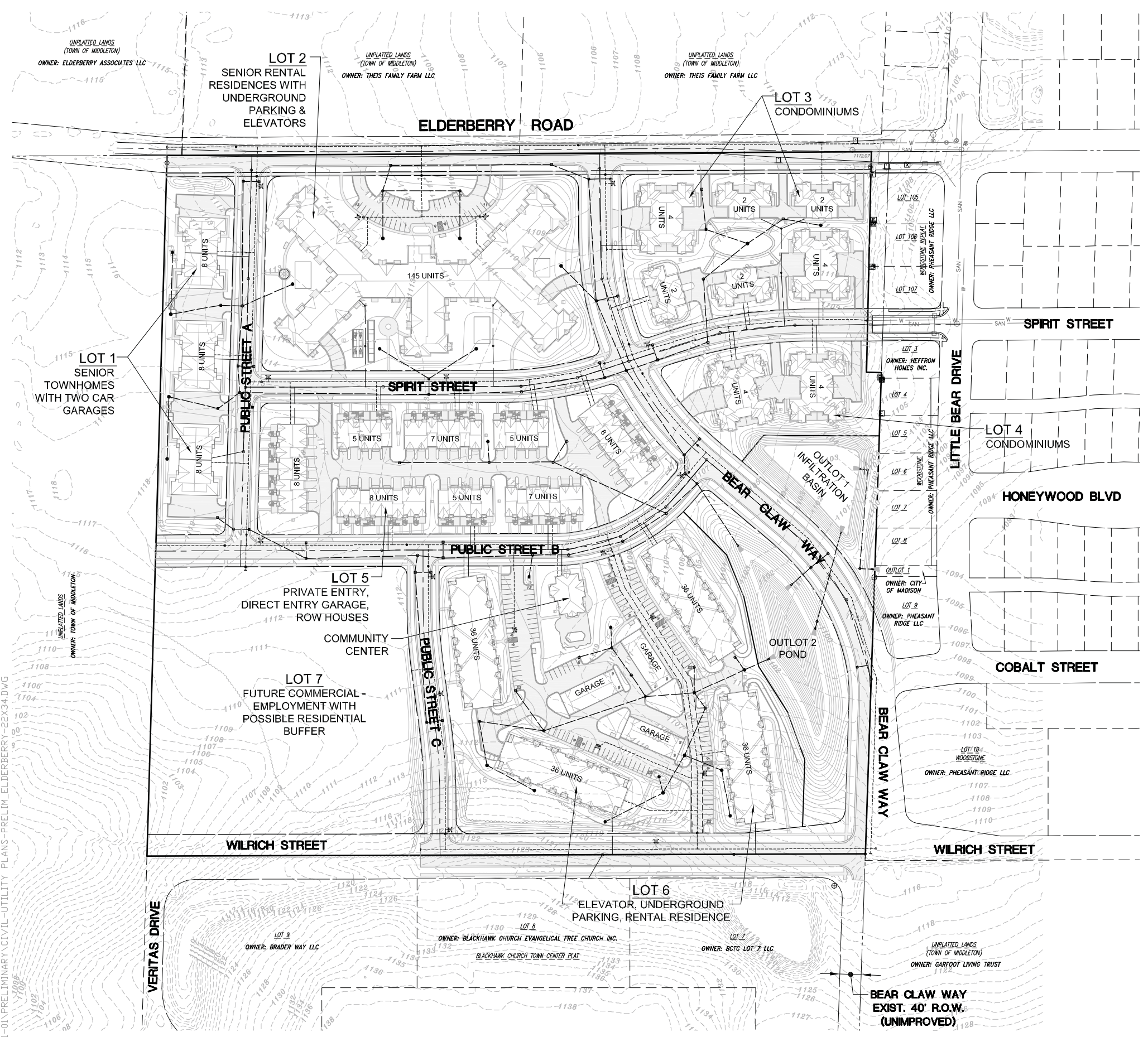
DATE:
MARCH 6, 2013

JOB NUMBER:
12041

DESCRIPTION:
SANITARY SEWER & WATER MAIN SYSTEM PLAN

SHEET

C3.0



LEGEND:

SAN	- EXISTING SANITARY SEWER
o	- EXISTING SANITARY MANHOLE
W	- EXISTING WATER MAIN
Hy	- EXISTING HYDRANT
ST	- EXISTING STORM SEWER
o	- EXISTING STORM MANHOLE
o	- EXISTING STORM INLET
- - -	- PROPOSED SANITARY SEWER
o	- PROPOSED SANITARY MANHOLE
- - -	- PROPOSED WATER MAIN
Hy	- PROPOSED HYDRANT
•	- PROPOSED WATER VALVE
- - -	- PROPOSED STORM SEWER
o	- PROPOSED STORM MANHOLE
o	- PROPOSED STORM INLET
▲	- PROPOSED STORM END SECTION

STORM SEWER NOTES:

- ALL MATERIALS SHALL BE APPROVED BY THE CITY OF MADISON PUBLIC WORKS DEPARTMENT PRIOR TO INSTALLATION.
- ALL PUBLIC STORM SEWER PIPE MATERIAL SHALL BE REINFORCED CONCRETE PIPE WITH GASKETED JOINTS. RCP STORM SEWER SHALL BE R.C.P. MEETING SECTION 8.6.0 (SSWCW) AND BE RUBBER GASKETED MEETING THE REQUIREMENTS SET FORTH IN WSWs CHAPTER 6.6.0.
- PRIVATE STORM SEWER PIPE MAY BE HIGH DENSITY POLYETHYLENE SMOOTH-WALL INTERIOR CORRUGATED PIPE & SHALL BE AS MANUFACTURED BY ADS OR EQUAL, WITH WATER TIGHT JOINTS, HAVING A MANNING "N" VALUE OF 0.010, OR EQUAL.

H:\C300\311\12041-01\PRELIMINARY\CIVIL-UTILITY PLANS-PRELIM_ELDERBERRY-22X34.DWG

CONTRACTOR IS REQUIRED TO CONTACT DIGGERS HOTLINE TOLL FREE TO OBTAIN LOCATION OF UNDERGROUND UTILITIES PRIOR TO COMMENCING THE WORK. WISCONSIN STATUTE 182.0715 REQUIRES MIN. OF 3 WORK DAYS NOTICE BEFORE YOU EXCAVATE
CALL DIGGERS HOTLINE 1-800-242-8511

NOTE:
EXISTING UNDERGROUND UTILITY INFORMATION WAS OBTAINED FROM AVAILABLE RECORDS. THE ENGINEER MAKES NO GUARANTEE AS TO THE ACCURACY OF THIS INFORMATION. VERIFICATION TO THE SATISFACTION OF THE CONTRACTOR OF ALL UNDERGROUND UTILITIES, WHETHER OR NOT SHOWN ON THE PLANS, SHALL BE ASSUMED AS A CONDITION OF THE CONTRACT. THE CONTRACTOR SHALL NOTIFY THE ENGINEER OF ANY DISCREPANCIES BETWEEN LOCATION OF UTILITIES IN THE FIELD AND LOCATIONS SHOWN ON THE PLANS.



17700 W. CAPITOL DRIVE
BROOKFIELD, WI 53045
PHONE: (262) 790-1480
FAX: (262) 790-1481
EMAIL: jpuedelko@trioeng.com

PROJECT:
HIGHLANDS COMMUNITY
ELDERBERRY NEIGHBORHOOD
CITY OF MADISON, WI
BY: United Financial Group, Inc.
660 W. Ridgeway Drive
Appleton, WI 54911

REVISION HISTORY

DATE	DESCRIPTION

DATE:
MARCH 6, 2013

JOB NUMBER:
12041

DESCRIPTION:
STORM SEWER SYSTEM PLAN

SHEET

C3.1