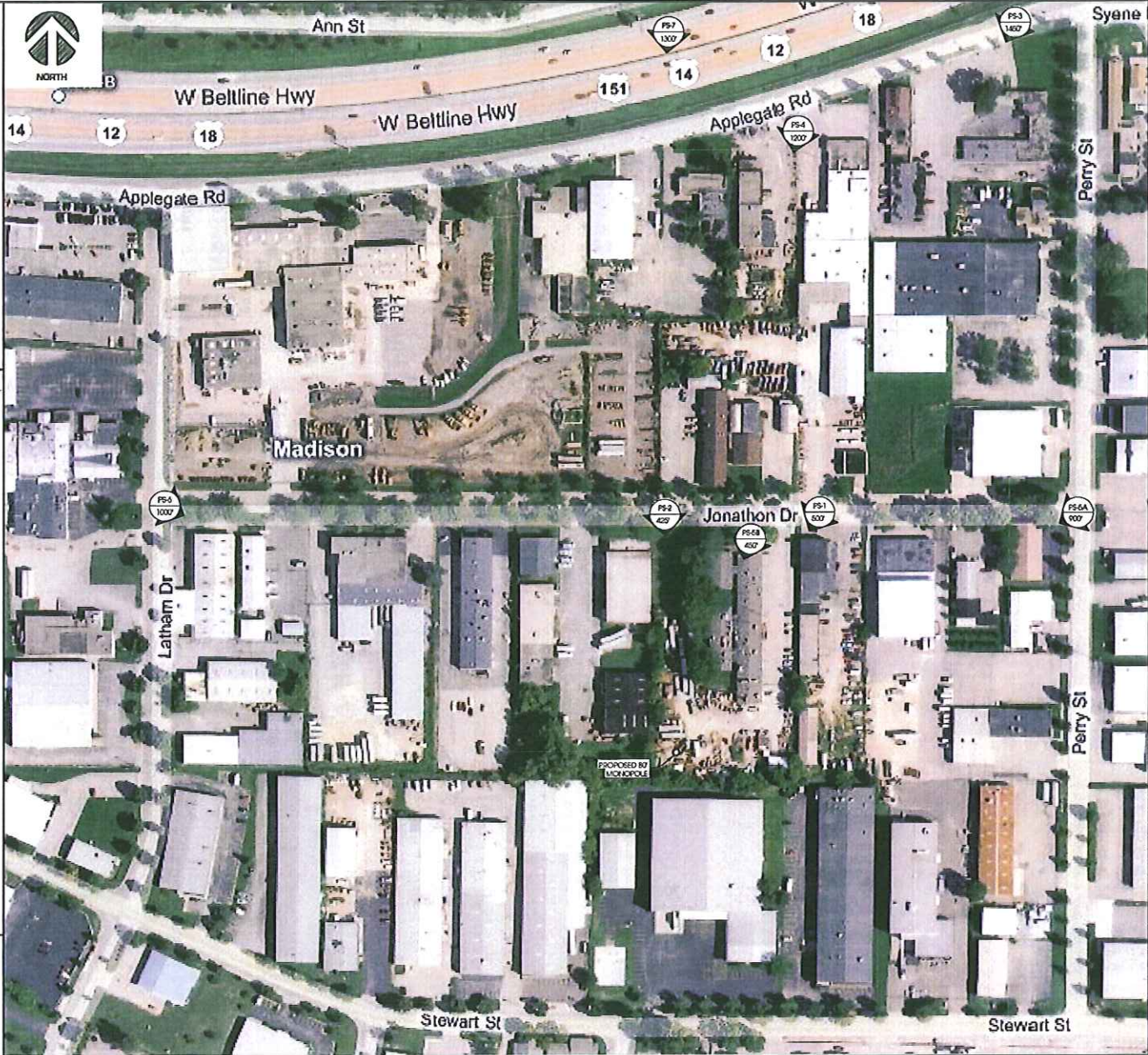


PHOTO SIMULATION NOTES:

- THESE PHOTO SIMULATIONS ARE AN INTERPRETATION OF THE GENERAL APPEARANCE OF THE PROPOSED INSTALLATION. EACH PHOTO SIMULATION IS BASED ON THE SCALING CRITERIA OR ASSUMPTIONS IDENTIFIED
- THE FINAL TOWER DESIGN AND DIMENSIONS WERE NOT AVAILABLE AT THE TIME THE PHOTO SIMULATION WAS PREPARED. THEREFORE, A TYPICAL TOWER/ANTENNA OF SIMILAR SIZE WAS UTILIZED FOR SIMULATION PURPOSES
- AN OBJECT OF KNOWN HEIGHT WAS NOT AVAILABLE FOR REFERENCE IN THE DIRECT VICINITY OF THE TOWER LOCATION, LIMITING RELIABILITY OF THE HEIGHT INTERPRETATION
- THE HORIZON LINE AT THE PROPOSED TOWER BASE IS NOT VISIBLE; A HORIZON LINE HAS BEEN ESTIMATED AT THE TOWER BASE FOR THE PHOTO SIMULATIONS
- ARTISTIC INTERPRETATIONS UTILIZED TO ESTIMATE THE APPROXIMATE TOWER SIZE AND APPEARANCE
- PHOTO SIMULATIONS GENERATED USING A SIMILAR TOWER OF SIMILAR HEIGHT AT A SIMILAR DISTANCE; ARTISTIC INTERPRETATIONS UTILIZED TO ESTIMATE THE APPROXIMATE TOWER SIZE AND APPEARANCE

PHOTO LOCATION DESCRIPTION:

- PHOTO SIM 1**
 - TAKEN FROM JONATHON DR. NORTHEAST OF TOWER LOCATION
 APPROXIMATE ELEVATION OF PHOTOGRAPH LOCATION
 - GROUND ELEVATION: 896', TOWER ELEVATION: 897'
 - DISTANCE TO TOWER: 500'
- PHOTO SIM 2**
 - TAKEN FROM JONATHON DR. NORTH OF TOWER LOCATION
 APPROXIMATE ELEVATION OF PHOTOGRAPH LOCATION
 - GROUND ELEVATION: 896', TOWER ELEVATION: 897'
 - DISTANCE TO TOWER: 425'
- PHOTO SIM 3**
 - TAKEN FROM APPLAGATE AND SYENE ROAD
 APPROXIMATE ELEVATION OF PHOTOGRAPH LOCATION
 - GROUND ELEVATION: 837', TOWER ELEVATION: 897'
 - DISTANCE TO TOWER: 1450'
- PHOTO SIM 4**
 - TAKEN FROM APPLAGATE ROAD
 APPROXIMATE ELEVATION OF PHOTOGRAPH LOCATION
 - GROUND ELEVATION: 889', TOWER ELEVATION: 897'
 - DISTANCE TO TOWER: 1200'
- PHOTO SIM 5A**
 - TAKEN FROM JONATHON DR. AND PERRY ST.
 APPROXIMATE ELEVATION OF PHOTOGRAPH LOCATION
 - GROUND ELEVATION: 886', TOWER ELEVATION: 897'
 - DISTANCE TO TOWER: 900'
- PHOTO SIM 5B**
 - TAKEN FROM JONATHON DRIVE NORTH OF TOWER LOCATION
 APPROXIMATE ELEVATION OF PHOTOGRAPH LOCATION
 - GROUND ELEVATION: 897', TOWER ELEVATION: 897'
 - DISTANCE TO TOWER: 450'
- PHOTO SIM 6**
 - TAKEN FROM JONATHON DR. AND LATHAM DRIVE
 APPROXIMATE ELEVATION OF PHOTOGRAPH LOCATION
 - GROUND ELEVATION: 888', TOWER ELEVATION: 897'
 - DISTANCE TO TOWER: 1000'
- PHOTO SIM 7**
 - TAKEN FROM W. BELLINE HWY 12 / 14
 APPROXIMATE ELEVATION OF PHOTOGRAPH LOCATION
 - GROUND ELEVATION: 887', TOWER ELEVATION: 897'
 - DISTANCE TO TOWER: 1000'



Edge
 Consulting Engineers, Inc.
 601 Water Street
 Madison, WI 53703
 608.264.1400
 608.264.1401 fax
 www.edgeconsult.com

**PHOTO SIMULATION
 GREENWAY (#782514)
 MADISON, WISCONSIN**

SHEET TITLE	EDGE DATE
PHOTO SIM 28-12-2009	
REVISIONS:	
DRAWN BY:	
JAN	
CHECKED BY:	
ASB	
PLT DATE:	
12/21/2009	
PROJECT NUMBER:	
075	
FILE NAME:	
AS1.dgn	
SHEET NUMBER:	
AS-1	



PHOTO SIMULATION DESCRIPTION:
 FOLLOWING UTILIZED FOR PHOTO SIMULATION
 -PHOTOGRAPH OF EXISTING MONOPOLE UTILIZED FOR PHOTO SIMULATION
 -PHOTOGRAPH ESTIMATED AT APPROX. 500' AWAY FROM TOWER LOCATION



ACTUAL PHOTO DESCRIPTION:
 FOLLOWING UTILIZED FOR PHOTO SIMULATION
 -EXISTING PHOTOGRAPH FOR PHOTO SIMULATION
 -PHOTOGRAPH ESTIMATED AT APPROX. 500' AWAY FROM TOWER LOCATION

© 2012 CONSULTING ENGINEERS, INC.

PS-1	PS-101	PS-102	PS-103	PS-104	PS-105	PS-106	PS-107	PS-108	PS-109	PS-110	PS-111	PS-112	PS-113	PS-114	PS-115	PS-116	PS-117	PS-118	PS-119	PS-120	PS-121	PS-122	PS-123	PS-124	PS-125	PS-126	PS-127	PS-128	PS-129	PS-130	PS-131	PS-132	PS-133	PS-134	PS-135	PS-136	PS-137	PS-138	PS-139	PS-140	PS-141	PS-142	PS-143	PS-144	PS-145	PS-146	PS-147	PS-148	PS-149	PS-150
------	--------	--------	--------	--------	--------	--------	--------	--------	--------	--------	--------	--------	--------	--------	--------	--------	--------	--------	--------	--------	--------	--------	--------	--------	--------	--------	--------	--------	--------	--------	--------	--------	--------	--------	--------	--------	--------	--------	--------	--------	--------	--------	--------	--------	--------	--------	--------	--------	--------	--------

PHOTO SIMULATION
GREENWAY [#782514]
MADISON, WISCONSIN

Edge
 Consulting Engineers, Inc.
 624 Water Street
 Prairie du Sac, WI 53578
 608.644.1440 voice
 608.644.1549 fax
 www.edgeconsult.com

K:\2012\11\16\photos and\11.16.12.jpg



PHOTO SIMULATION DESCRIPTION:
 FOLLOWING UTILIZED FOR PHOTO SIMULATION
 -PHOTOGRAPH OF EXISTING MONOPOLE UTILIZED FOR PHOTO SIMULATION
 -PHOTOGRAPH ESTIMATED AT APPROX. 1450' AWAY FROM TOWER LOCATION



ACTUAL PHOTO DESCRIPTION:
 FOLLOWING UTILIZED FOR PHOTO SIMULATION
 -EXISTING PHOTOGRAPH FOR PHOTO SIMULATION
 -PHOTOGRAPH ESTIMATED AT APPROX. 1450' AWAY FROM TOWER LOCATION

© EDGE CONSULTING ENGINEERS, INC.

DATE PLOTTED	11/16/12
PROJECT NUMBER	782514
PROJECT NAME	GREENWAY
DATE	11/16/12
BY	JHL
CHECKED BY	ASB
DESIGNED BY	JHL
DRAWN BY	JHL
SCALE	AS SHOWN
SHEET NUMBER	PS-3

SHEET TITLE	PHOTO SIMULATION
DATE	11/16/12
BY	JHL
CHECKED BY	ASB
DESIGNED BY	JHL
DRAWN BY	JHL
SCALE	AS SHOWN
SHEET NUMBER	PS-3

PHOTO SIMULATION
GREENWAY [#782514]
MADISON, WISCONSIN

Edge
 Consulting Engineers, Inc.
 624 Water Street
 Prairie du Sac, WI 53576
 608.664.1449 voice
 608.664.1349 fax
 www.edgeconsult.com

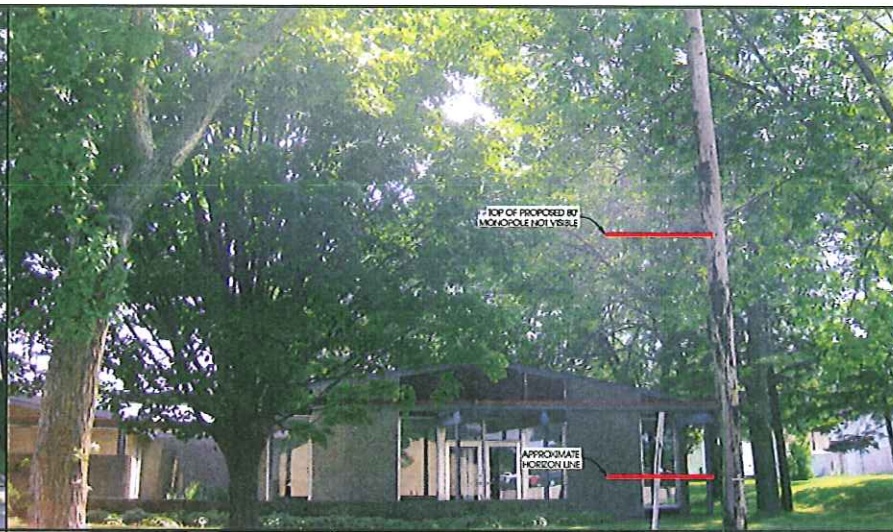


PHOTO SIMULATION DESCRIPTION:
 FOLLOWING UTILIZED FOR PHOTO SIMULATION
 -PHOTOGRAPH OF EXISTING MONOPOLE UTILIZED FOR PHOTO SIMULATION
 -PHOTOGRAPH ESTIMATED AT APPROX. 900' AWAY FROM TOWER LOCATION

PHOTO SIMULATION #5A

PHOTO SIMULATION DESCRIPTION:
 FOLLOWING UTILIZED FOR PHOTO SIMULATION
 -PHOTOGRAPH OF EXISTING MONOPOLE UTILIZED FOR PHOTO SIMULATION
 -PHOTOGRAPH ESTIMATED AT APPROX. 450' AWAY FROM TOWER LOCATION

PHOTO SIMULATION #5B



ACTUAL PHOTO DESCRIPTION:
 FOLLOWING UTILIZED FOR PHOTO SIMULATION
 -EXISTING PHOTOGRAPH FOR PHOTO SIMULATION
 -PHOTOGRAPH ESTIMATED AT APPROX. 900' AWAY FROM TOWER LOCATION



ACTUAL PHOTO DESCRIPTION:
 FOLLOWING UTILIZED FOR PHOTO SIMULATION
 -EXISTING PHOTOGRAPH FOR PHOTO SIMULATION
 -PHOTOGRAPH ESTIMATED AT APPROX. 450' AWAY FROM TOWER LOCATION

PHOTO SIMULATION
GREENWAY (#782514)
MADISON, WISCONSIN

SHEET TITLE	REVISION DATE
	PHOTO SIMS 28-12-2009
REVISIONS	
DRAWN BY:	JAH
CHECKED BY:	ASB
PLotted DATE:	11/27/2009
PROJECT NUMBER:	6296
FILE NAME:	PS-5.dwg
SHEET NUMBER:	PS-5

