

**Calkins Engineering, Inc.**  
 Civil Engineers & Land Surveyors  
 1000 University Ave.  
 Madison, WI 53706  
 Phone: (608) 278-4400  
 Fax: (608) 278-4468

**Building Systems General Corp.**  
 100  
 Madison, Wisconsin 53719  
 Phone: (608) 278-4400  
 Fax: (608) 278-4468



**NEW FACILITY FOR FULL COMPASS MADISON, WISCONSIN**

**PROGRESS PRINT**  
 NOT FOR CONSTRUCTION  
 DATE: 05-25-2007

**Copyright 2007**  
 All rights reserved by Larson & Doby Group  
 Larson & Doby Group  
 (Wisconsin employee property)

**ISSUED FOR:**

**PROJECT NUMBER:** BU109

**HEET NUMBER:** C-1.0

**DRAWN:** APPROVED:











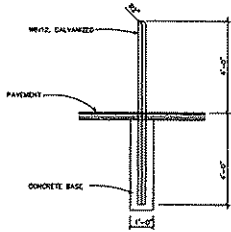




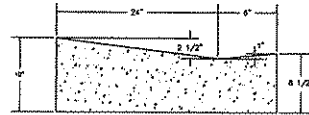




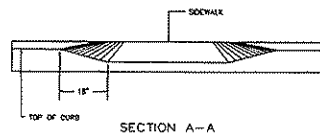




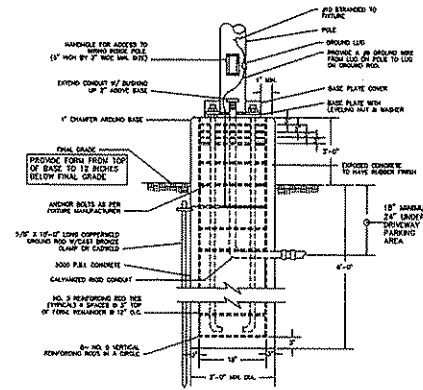
17 PARKING BOLLARD DETAIL  
SCALE: NOT TO SCALE



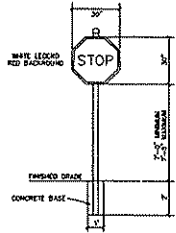
20 DRIVEWAY SECTION CONCRETE CURB & GUTTER TYPE "X"  
NOT TO SCALE (PAY AS TYPE "X" CONCRETE CURB & GUTTER)



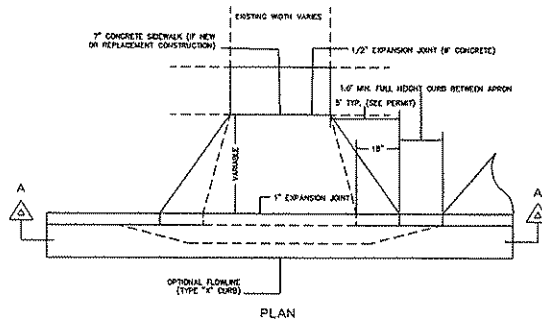
SECTION A-A



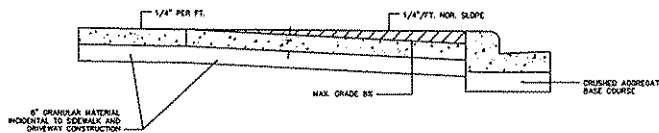
22 CONCRETE BASE DETAIL  
NOT TO SCALE



18 STOP SIGN DETAIL  
NOT TO SCALE

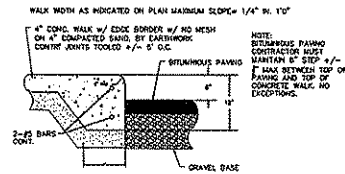


PLAN

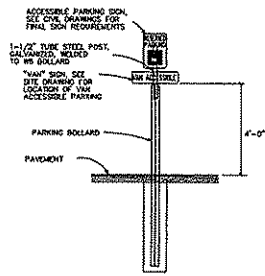


PROFILE

21 COMMERCIAL DRIVEWAY DETAIL  
NOT TO SCALE



23 THICKENED EDGE @ SIDEWALK  
NOT TO SCALE



19 ACCESSIBLE PARKING POST  
SCALE: NOT TO SCALE

Larson & Dabry Group  
Larson & Dabry Group  
Civil Engineers & Land Surveyors  
1000 Wisconsin Ave., Suite 200  
Madison, WI 53703  
Phone: (608) 278-4400  
Fax: (608) 278-4468

Building Systems  
General Corp. Inc.  
1072 Eastgate Drive, Suite 200  
Madison, WI 53713  
Phone: (608) 278-4400  
Fax: (608) 278-4468



NEW FACILITY FOR  
FULL COMPASS  
MADISON, WISCONSIN

PROGRESS PRINT  
Prepared in accordance with  
the specifications of  
Larson and Dabry, Inc.  
(includes employee names)

ISSUED FOR:  
PROJECT NUMBER:  
DATE:  
DRAWN:  
APPROVED:  
C-2.1

GENERAL NOTES

- 1. ALL DISTURBED AREAS TO BE REVEGETATED...
2. BEFORE PROCEEDING WITH ANY...
3. HORIZONTAL CONTROL...
4. THE CONTRACTOR SHALL...
5. THE CONTRACTOR SHALL...
6. THE CONTRACTOR SHALL...

CONSTRUCTION SEQUENCE

- 1. OBTAIN ALL NECESSARY PERMITS AND APPROVALS...
2. THE CONTRACTOR SHALL NOTIFY THE OWNER AND THE MANUFACTURER...
3. INSTALL STANDARDIZED CONSTRUCTION ENTRANCE...
4. PREPARE TEMPORARY PARKING AND STORAGE AREA...
5. CONDUCT SAFETY TRAINING ON THE SITE...
6. CLEAN UP AND MAINTAIN THE SITE...
7. BEGIN GRADING...
8. START CONSTRUCTION OF BUILDING FOOTING...
9. INSTALL EROSION PREVENTION...
10. PREPARE AND PAVE SITE...
11. COMPLETE GRADING AND INITIAL LANDSCAPING...

EROSION CONTROL HOLES

- 1. ALL CONSTRUCTION AND MAINTENANCE ACTIVITIES...
2. THE CONTRACTOR IS RESPONSIBLE FOR PROVIDING...
3. BEST MANAGEMENT PRACTICES (BMPs)...
4. THE CONTRACTOR IS RESPONSIBLE FOR INSTALLATION...
5. THE CONTRACTOR SHALL MAINTAIN...
6. ALL DISTURBED AREAS SHALL BE REVEGETATED...
7. THE CONTRACTOR SHALL MAINTAIN...
8. STORM COLLECTION ENTRANCE...
9. THE CONTRACTOR SHALL...
10. IF THE ACTION OF WATERS...
11. ALL MATERIALS...
12. WATER ON THE SITE...
13. DISTURBED AREAS...
14. MAINTENANCE...
15. ALL MATERIALS...
16. WATER ON THE SITE...
17. DISTURBED AREAS...
18. MAINTENANCE...

EROSION CONTROL MAINTENANCE

- 1. ALL DISTURBED AREAS...
2. THE CONTRACTOR SHALL...
3. THE CONTRACTOR SHALL...
4. THE CONTRACTOR SHALL...
5. THE CONTRACTOR SHALL...
6. THE CONTRACTOR SHALL...
7. THE CONTRACTOR SHALL...
8. THE CONTRACTOR SHALL...
9. THE CONTRACTOR SHALL...
10. THE CONTRACTOR SHALL...
11. THE CONTRACTOR SHALL...
12. THE CONTRACTOR SHALL...
13. THE CONTRACTOR SHALL...
14. THE CONTRACTOR SHALL...
15. THE CONTRACTOR SHALL...
16. THE CONTRACTOR SHALL...
17. THE CONTRACTOR SHALL...
18. THE CONTRACTOR SHALL...
19. THE CONTRACTOR SHALL...
20. THE CONTRACTOR SHALL...

SPECIFICATIONS FOR GRADING

- 1. THE PROPOSED GRADINGS SHALL BE...
2. THE CONTRACTOR SHALL NOTIFY...
3. THE CONTRACTOR SHALL...
4. THE CONTRACTOR SHALL...
5. THE CONTRACTOR SHALL...
6. THE CONTRACTOR SHALL...
7. THE CONTRACTOR SHALL...
8. THE CONTRACTOR SHALL...
9. THE CONTRACTOR SHALL...
10. THE CONTRACTOR SHALL...
11. THE CONTRACTOR SHALL...
12. THE CONTRACTOR SHALL...
13. THE CONTRACTOR SHALL...
14. THE CONTRACTOR SHALL...
15. THE CONTRACTOR SHALL...
16. THE CONTRACTOR SHALL...
17. THE CONTRACTOR SHALL...
18. THE CONTRACTOR SHALL...
19. THE CONTRACTOR SHALL...
20. THE CONTRACTOR SHALL...

SPECIFICATIONS FOR PRIVATE UTILITIES

- 1. THE PROPOSED GRADINGS SHALL BE...
2. THE CONTRACTOR SHALL...
3. THE CONTRACTOR SHALL...
4. THE CONTRACTOR SHALL...
5. THE CONTRACTOR SHALL...
6. THE CONTRACTOR SHALL...
7. THE CONTRACTOR SHALL...
8. THE CONTRACTOR SHALL...
9. THE CONTRACTOR SHALL...
10. THE CONTRACTOR SHALL...
11. THE CONTRACTOR SHALL...
12. THE CONTRACTOR SHALL...
13. THE CONTRACTOR SHALL...
14. THE CONTRACTOR SHALL...
15. THE CONTRACTOR SHALL...
16. THE CONTRACTOR SHALL...
17. THE CONTRACTOR SHALL...
18. THE CONTRACTOR SHALL...
19. THE CONTRACTOR SHALL...
20. THE CONTRACTOR SHALL...

SPECIFICATIONS FOR PAVING

- 1. THE PROPOSED GRADINGS SHALL BE...
2. THE CONTRACTOR SHALL...
3. THE CONTRACTOR SHALL...
4. THE CONTRACTOR SHALL...
5. THE CONTRACTOR SHALL...
6. THE CONTRACTOR SHALL...
7. THE CONTRACTOR SHALL...
8. THE CONTRACTOR SHALL...
9. THE CONTRACTOR SHALL...
10. THE CONTRACTOR SHALL...
11. THE CONTRACTOR SHALL...
12. THE CONTRACTOR SHALL...
13. THE CONTRACTOR SHALL...
14. THE CONTRACTOR SHALL...
15. THE CONTRACTOR SHALL...
16. THE CONTRACTOR SHALL...
17. THE CONTRACTOR SHALL...
18. THE CONTRACTOR SHALL...
19. THE CONTRACTOR SHALL...
20. THE CONTRACTOR SHALL...

SPECIFICATIONS FOR PAVING

- 1. THE PROPOSED GRADINGS SHALL BE...
2. THE CONTRACTOR SHALL...
3. THE CONTRACTOR SHALL...
4. THE CONTRACTOR SHALL...
5. THE CONTRACTOR SHALL...
6. THE CONTRACTOR SHALL...
7. THE CONTRACTOR SHALL...
8. THE CONTRACTOR SHALL...
9. THE CONTRACTOR SHALL...
10. THE CONTRACTOR SHALL...
11. THE CONTRACTOR SHALL...
12. THE CONTRACTOR SHALL...
13. THE CONTRACTOR SHALL...
14. THE CONTRACTOR SHALL...
15. THE CONTRACTOR SHALL...
16. THE CONTRACTOR SHALL...
17. THE CONTRACTOR SHALL...
18. THE CONTRACTOR SHALL...
19. THE CONTRACTOR SHALL...
20. THE CONTRACTOR SHALL...

SPECIFICATIONS FOR PAVEMENT MARKINGS

- 1. THE PROPOSED GRADINGS SHALL BE...
2. THE CONTRACTOR SHALL...
3. THE CONTRACTOR SHALL...
4. THE CONTRACTOR SHALL...
5. THE CONTRACTOR SHALL...
6. THE CONTRACTOR SHALL...
7. THE CONTRACTOR SHALL...
8. THE CONTRACTOR SHALL...
9. THE CONTRACTOR SHALL...
10. THE CONTRACTOR SHALL...
11. THE CONTRACTOR SHALL...
12. THE CONTRACTOR SHALL...
13. THE CONTRACTOR SHALL...
14. THE CONTRACTOR SHALL...
15. THE CONTRACTOR SHALL...
16. THE CONTRACTOR SHALL...
17. THE CONTRACTOR SHALL...
18. THE CONTRACTOR SHALL...
19. THE CONTRACTOR SHALL...
20. THE CONTRACTOR SHALL...



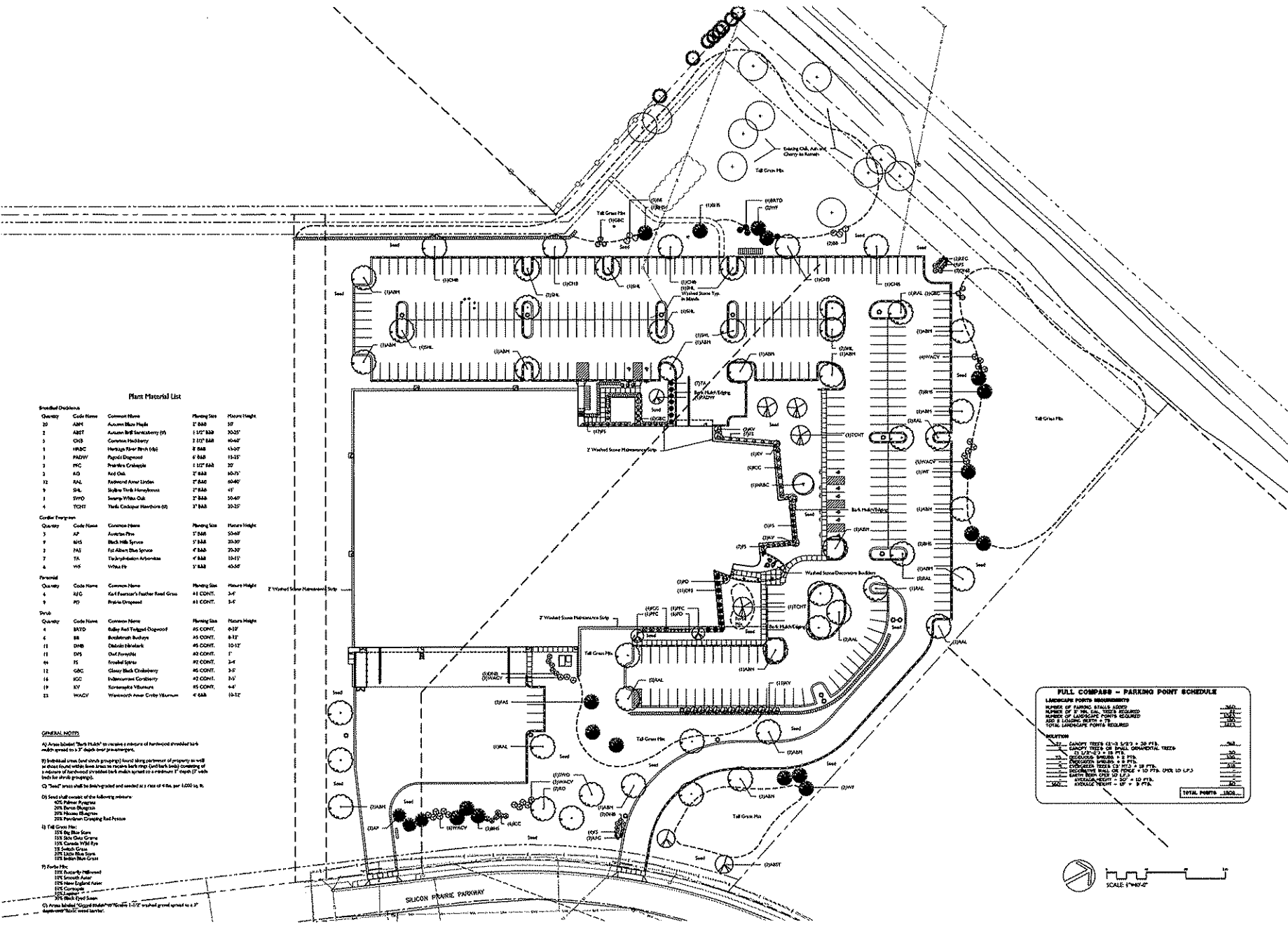
Lansin & Darby Group
Civil Engineering & Land Surveyors
2500 W. Wisconsin Ave., Suite 100
Madison, WI 53719
Phone: (608) 271-4488

Building Systems
General Corp.
5972 Executive Drive, Suite 100
Madison, Wisconsin 53719
Phone: (608) 271-4488

NEW FACILITY FOR
FULL COMPASS
MADISON, WISCONSIN

PROGRESS PRINT
Not for Construction
Date: 11/13/2007
Sheet: 1 of 2
Lansin & Darby Group

ISSUED FOR:
PROJECT NUMBER:
DRAWN: APPROVED:
DATE: 11-13-2007
PROJECT: NEW FACILITY FOR FULL COMPASS
SHEET NUMBER: 109
SHEET TOTAL: 209
DATE: 11-13-2007
PROJECT: NEW FACILITY FOR FULL COMPASS
SHEET NUMBER: 109
SHEET TOTAL: 209



**Plant Material List**

Quantity	Code Name	Common Name	Planting Size	Height
20	ADM	Aucuba Mini Hyde	1" B&B	3/2"
2	ABRT	Aucuba B&B Sanicollery (P)	1 1/2" B&B	300/2"
1	CRB	Common Hollyherry	7 1/2" B&B	40-42"
1	HBCB	Heritage Flower Birch (S)	8" B&B	13-37"
1	PAZV	Pagoda Dogwood	8" B&B	13-21"
2	HC	Redwood Crabapple	1 1/2" B&B	3/2"
2	RD	Red Oak	7" B&B	30-37"
12	SAL	Redwood Amer Linden	7" B&B	60-65"
9	SKL	Skidlow Tree Hamamelis	7" B&B	41"
1	SPVD	Sweetgum White Oak	7" B&B	50-67"
4	TQCT	Yucca Glauca Hawthorn (S)	7" B&B	33-37"

Quantity	Code Name	Common Name	Planting Size	Height
3	AP	Aurea Pine	7" B&B	50-67"
9	MS	Black Hill Spruce	7" B&B	20-37"
2	FAI	Fat Albert Blue Spruce	4" B&B	20-37"
7	TA	Turkeytailer Arctostaphylos	4" B&B	10-11"
4	WX	White Fir	7" B&B	45-57"

Quantity	Code Name	Common Name	Planting Size	Height
4	RZG	Rafel Feuer's Feather Reed Grass	#1 CONT.	3-4'
9	PD	Prairie Dropseed	#1 CONT.	3-4'

Quantity	Code Name	Common Name	Planting Size	Height
4	B&D	B&B Red Tulegum Dogwood	#5 CONT.	6-12'
4	BB	B&B Red Tulegum Dogwood	#5 CONT.	8-12'
11	DHB	Delicate Hawthorn	#5 CONT.	10-12'
11	DIS	Dark Forsythia	#2 CONT.	7'
44	IS	Ironwood Spruce	#2 CONT.	3-4'
12	G&C	Glossy Black Chokeberry	#5 CONT.	3-6'
16	MC	Midwestern Cornflower	#2 CONT.	3-6'
19	NY	Yucca filamentosa	#2 CONT.	4-6'
23	W&C	Wentworth Amer Crisp Yucca	4" B&B	10-12'

**GENERAL NOTES:**
  
 (1) Areas labeled "Washed Stone" require a minimum of 1/2" washed stone spread to a 1" depth over 1/2" gravel.
   
 (2) Individual trees (and shrub groupings) located along perimeter of property to be used to shade building base and to screen back yard. (See Planting Schedule) and a minimum of 1/2" washed stone spread to a minimum 1" depth (1" depth) to be used for shrub groupings.
   
 (3) "Sand" areas shall be 1/2" washed stone and seeded at a rate of 4 lbs. per 1,000 sq. ft.
   
 (4) Seed shall consist of the following minimum:
 

- 50% Palmer Paspalum
- 20% Annual Ryegrass
- 20% Annual Ryegrass
- 20% Annual Ryegrass
- 20% Kentucky Bluegrass

 (5) 1/2" Wash Stone:
 

- 15% Blue Blue Stone
- 15% Blue Blue Stone
- 15% Blue Blue Stone
- 15% Blue Blue Stone
- 15% Blue Blue Stone
- 15% Blue Blue Stone
- 15% Blue Blue Stone
- 15% Blue Blue Stone

 (6) For the:
 

- 15% Blue Blue Stone
- 15% Blue Blue Stone
- 15% Blue Blue Stone
- 15% Blue Blue Stone
- 15% Blue Blue Stone
- 15% Blue Blue Stone
- 15% Blue Blue Stone
- 15% Blue Blue Stone

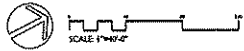
 (7) Areas labeled "Washed Stone" require 1/2" washed stone spread to a 1" depth over 1/2" gravel.

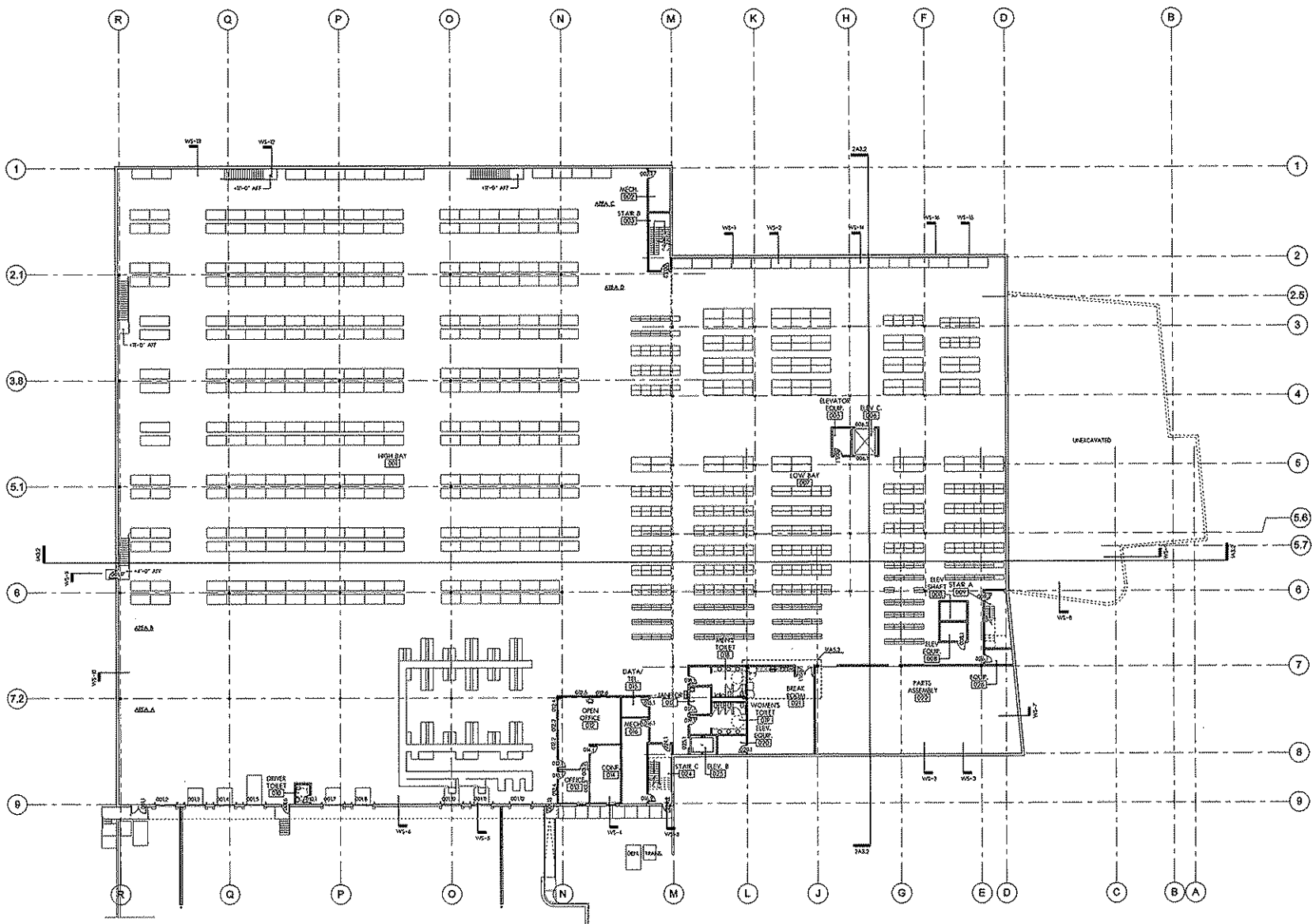
**FULL COMPASS - PARKING POINT SCHEDULE**

LANDSCAPE POINTS MEASUREMENTS

NUMBER OF PARKING STALLS ADJACENT TO LANDSCAPE POINTS REQUIRED	NUMBER OF LANDSCAPE POINTS REQUIRED
1-10	1
11-20	2
21-30	3
31-40	4
41-50	5
51-60	6
61-70	7
71-80	8
81-90	9
91-100	10
101-110	11
111-120	12
121-130	13
131-140	14
141-150	15
151-160	16
161-170	17
171-180	18
181-190	19
191-200	20
201-210	21
211-220	22
221-230	23
231-240	24
241-250	25
251-260	26
261-270	27
271-280	28
281-290	29
291-300	30
301-310	31
311-320	32
321-330	33
331-340	34
341-350	35
351-360	36
361-370	37
371-380	38
381-390	39
391-400	40
401-410	41
411-420	42
421-430	43
431-440	44
441-450	45
451-460	46
461-470	47
471-480	48
481-490	49
491-500	50
501-510	51
511-520	52
521-530	53
531-540	54
541-550	55
551-560	56
561-570	57
571-580	58
581-590	59
591-600	60
601-610	61
611-620	62
621-630	63
631-640	64
641-650	65
651-660	66
661-670	67
671-680	68
681-690	69
691-700	70
701-710	71
711-720	72
721-730	73
731-740	74
741-750	75
751-760	76
761-770	77
771-780	78
781-790	79
791-800	80
801-810	81
811-820	82
821-830	83
831-840	84
841-850	85
851-860	86
861-870	87
871-880	88
881-890	89
891-900	90
901-910	91
911-920	92
921-930	93
931-940	94
941-950	95
951-960	96
961-970	97
971-980	98
981-990	99
991-1000	100

**LEGEND:**
  
 1" CANOPY TREES (10-12' L x 7" W) = 20 PTS.
   
 2" CANOPY TREES OR SMALL ORNAMENTAL TREES (10-12' L x 7" W) = 10 PTS.
   
 3" CANOPY TREES OR SMALL ORNAMENTAL TREES (10-12' L x 7" W) = 5 PTS.
   
 4" CANOPY TREES OR SMALL ORNAMENTAL TREES (10-12' L x 7" W) = 3 PTS.
   
 5" CANOPY TREES OR SMALL ORNAMENTAL TREES (10-12' L x 7" W) = 2 PTS.
   
 6" CANOPY TREES OR SMALL ORNAMENTAL TREES (10-12' L x 7" W) = 1 PT.
   
 7" CANOPY TREES OR SMALL ORNAMENTAL TREES (10-12' L x 7" W) = 1/2 PT.
   
 8" CANOPY TREES OR SMALL ORNAMENTAL TREES (10-12' L x 7" W) = 1/4 PT.
   
 9" CANOPY TREES OR SMALL ORNAMENTAL TREES (10-12' L x 7" W) = 1/8 PT.
   
 10" CANOPY TREES OR SMALL ORNAMENTAL TREES (10-12' L x 7" W) = 1/16 PT.
   
 11" CANOPY TREES OR SMALL ORNAMENTAL TREES (10-12' L x 7" W) = 1/32 PT.
   
 12" CANOPY TREES OR SMALL ORNAMENTAL TREES (10-12' L x 7" W) = 1/64 PT.
   
 13" CANOPY TREES OR SMALL ORNAMENTAL TREES (10-12' L x 7" W) = 1/128 PT.
   
 14" CANOPY TREES OR SMALL ORNAMENTAL TREES (10-12' L x 7" W) = 1/256 PT.
   
 15" CANOPY TREES OR SMALL ORNAMENTAL TREES (10-12' L x 7" W) = 1/512 PT.
   
 16" CANOPY TREES OR SMALL ORNAMENTAL TREES (10-12' L x 7" W) = 1/1024 PT.
   
 17" CANOPY TREES OR SMALL ORNAMENTAL TREES (10-12' L x 7" W) = 1/2048 PT.
   
 18" CANOPY TREES OR SMALL ORNAMENTAL TREES (10-12' L x 7" W) = 1/4096 PT.
   
 19" CANOPY TREES OR SMALL ORNAMENTAL TREES (10-12' L x 7" W) = 1/8192 PT.
   
 20" CANOPY TREES OR SMALL ORNAMENTAL TREES (10-12' L x 7" W) = 1/16384 PT.
   
 21" CANOPY TREES OR SMALL ORNAMENTAL TREES (10-12' L x 7" W) = 1/32768 PT.
   
 22" CANOPY TREES OR SMALL ORNAMENTAL TREES (10-12' L x 7" W) = 1/65536 PT.
   
 23" CANOPY TREES OR SMALL ORNAMENTAL TREES (10-12' L x 7" W) = 1/131072 PT.
   
 24" CANOPY TREES OR SMALL ORNAMENTAL TREES (10-12' L x 7" W) = 1/262144 PT.
   
 25" CANOPY TREES OR SMALL ORNAMENTAL TREES (10-12' L x 7" W) = 1/524288 PT.
   
 26" CANOPY TREES OR SMALL ORNAMENTAL TREES (10-12' L x 7" W) = 1/1048576 PT.
   
 27" CANOPY TREES OR SMALL ORNAMENTAL TREES (10-12' L x 7" W) = 1/2097152 PT.
   
 28" CANOPY TREES OR SMALL ORNAMENTAL TREES (10-12' L x 7" W) = 1/4194304 PT.
   
 29" CANOPY TREES OR SMALL ORNAMENTAL TREES (10-12' L x 7" W) = 1/8388608 PT.
   
 30" CANOPY TREES OR SMALL ORNAMENTAL TREES (10-12' L x 7" W) = 1/16777216 PT.
   
 31" CANOPY TREES OR SMALL ORNAMENTAL TREES (10-12' L x 7" W) = 1/33554432 PT.
   
 32" CANOPY TREES OR SMALL ORNAMENTAL TREES (10-12' L x 7" W) = 1/67108864 PT.
   
 33" CANOPY TREES OR SMALL ORNAMENTAL TREES (10-12' L x 7" W) = 1/134217728 PT.
   
 34" CANOPY TREES OR SMALL ORNAMENTAL TREES (10-12' L x 7" W) = 1/268435456 PT.
   
 35" CANOPY TREES OR SMALL ORNAMENTAL TREES (10-12' L x 7" W) = 1/536870912 PT.
   
 36" CANOPY TREES OR SMALL ORNAMENTAL TREES (10-12' L x 7" W) = 1/1073741824 PT.
   
 37" CANOPY TREES OR SMALL ORNAMENTAL TREES (10-12' L x 7" W) = 1/2147483648 PT.
   
 38" CANOPY TREES OR SMALL ORNAMENTAL TREES (10-12' L x 7" W) = 1/4294967296 PT.
   
 39" CANOPY TREES OR SMALL ORNAMENTAL TREES (10-12' L x 7" W) = 1/8589934592 PT.
   
 40" CANOPY TREES OR SMALL ORNAMENTAL TREES (10-12' L x 7" W) = 1/17179869184 PT.
   
 41" CANOPY TREES OR SMALL ORNAMENTAL TREES (10-12' L x 7" W) = 1/34359738368 PT.
   
 42" CANOPY TREES OR SMALL ORNAMENTAL TREES (10-12' L x 7" W) = 1/68719476736 PT.
   
 43" CANOPY TREES OR SMALL ORNAMENTAL TREES (10-12' L x 7" W) = 1/137438953472 PT.
   
 44" CANOPY TREES OR SMALL ORNAMENTAL TREES (10-12' L x 7" W) = 1/274877906944 PT.
   
 45" CANOPY TREES OR SMALL ORNAMENTAL TREES (10-12' L x 7" W) = 1/549755813888 PT.
   
 46" CANOPY TREES OR SMALL ORNAMENTAL TREES (10-12' L x 7" W) = 1/1099511627776 PT.
   
 47" CANOPY TREES OR SMALL ORNAMENTAL TREES (10-12' L x 7" W) = 1/2199023255552 PT.
   
 48" CANOPY TREES OR SMALL ORNAMENTAL TREES (10-12' L x 7" W) = 1/4398046511104 PT.
   
 49" CANOPY TREES OR SMALL ORNAMENTAL TREES (10-12' L x 7" W) = 1/8796093022208 PT.
   
 50" CANOPY TREES OR SMALL ORNAMENTAL TREES (10-12' L x 7" W) = 1/17592186044416 PT.
   
 51" CANOPY TREES OR SMALL ORNAMENTAL TREES (10-12' L x 7" W) = 1/35184372088832 PT.
   
 52" CANOPY TREES OR SMALL ORNAMENTAL TREES (10-12' L x 7" W) = 1/70368744177664 PT.
   
 53" CANOPY TREES OR SMALL ORNAMENTAL TREES (10-12' L x 7" W) = 1/140737488355328 PT.
   
 54" CANOPY TREES OR SMALL ORNAMENTAL TREES (10-12' L x 7" W) = 1/281474976710656 PT.
   
 55" CANOPY TREES OR SMALL ORNAMENTAL TREES (10-12' L x 7" W) = 1/562949953421312 PT.
   
 56" CANOPY TREES OR SMALL ORNAMENTAL TREES (10-12' L x 7" W) = 1/1125899906842624 PT.
   
 57" CANOPY TREES OR SMALL ORNAMENTAL TREES (10-12' L x 7" W) = 1/2251799813685248 PT.
   
 58" CANOPY TREES OR SMALL ORNAMENTAL TREES (10-12' L x 7" W) = 1/4503599627370496 PT.
   
 59" CANOPY TREES OR SMALL ORNAMENTAL TREES (10-12' L x 7" W) = 1/9007199254740992 PT.
   
 60" CANOPY TREES OR SMALL ORNAMENTAL TREES (10-12' L x 7" W) = 1/18014398509481984 PT.
   
 61" CANOPY TREES OR SMALL ORNAMENTAL TREES (10-12' L x 7" W) = 1/36028797018963968 PT.
   
 62" CANOPY TREES OR SMALL ORNAMENTAL TREES (10-12' L x 7" W) = 1/72057594037927936 PT.
   
 63" CANOPY TREES OR SMALL ORNAMENTAL TREES (10-12' L x 7" W) = 1/14411518807585584 PT.
   
 64" CANOPY TREES OR SMALL ORNAMENTAL TREES (10-12' L x 7" W) = 1/28823037615171168 PT.
   
 65" CANOPY TREES OR SMALL ORNAMENTAL TREES (10-12' L x 7" W) = 1/57646075230342336 PT.
   
 66" CANOPY TREES OR SMALL ORNAMENTAL TREES (10-12' L x 7" W) = 1/115292150460684672 PT.
   
 67" CANOPY TREES OR SMALL ORNAMENTAL TREES (10-12' L x 7" W) = 1/230584300921369344 PT.
   
 68" CANOPY TREES OR SMALL ORNAMENTAL TREES (10-12' L x 7" W) = 1/461168601842738688 PT.
   
 69" CANOPY TREES OR SMALL ORNAMENTAL TREES (10-12' L x 7" W) = 1/922337203685477376 PT.
   
 70" CANOPY TREES OR SMALL ORNAMENTAL TREES (10-12' L x 7" W) = 1/1844674407370954752 PT.
   
 71" CANOPY TREES OR SMALL ORNAMENTAL TREES (10-12' L x 7" W) = 1/3689348814741909504 PT.
   
 72" CANOPY TREES OR SMALL ORNAMENTAL TREES (10-12' L x 7" W) = 1/7378697629483819008 PT.
   
 73" CANOPY TREES OR SMALL ORNAMENTAL TREES (10-12' L x 7" W) = 1/14757395258967638016 PT.
   
 74" CANOPY TREES OR SMALL ORNAMENTAL TREES (10-12' L x 7" W) = 1/29514790517935276032 PT.
   
 75" CANOPY TREES OR SMALL ORNAMENTAL TREES (10-12' L x 7" W) = 1/59029581035870552064 PT.
   
 76" CANOPY TREES OR SMALL ORNAMENTAL TREES (10-12' L x 7" W) = 1/118059162071741104128 PT.
   
 77" CANOPY TREES OR SMALL ORNAMENTAL TREES (10-12' L x 7" W) = 1/236118324143482208256 PT.
   
 78" CANOPY TREES OR SMALL ORNAMENTAL TREES (10-12' L x 7" W) = 1/472236648286964416512 PT.
   
 79" CANOPY TREES OR SMALL ORNAMENTAL TREES (10-12' L x 7" W) = 1/944473296573928833024 PT.
   
 80" CANOPY TREES OR SMALL ORNAMENTAL TREES (10-12' L x 7" W) = 1/1888946593147857666048 PT.
   
 81" CANOPY TREES OR SMALL ORNAMENTAL TREES (10-12' L x 7" W) = 1/3777893186295715332096 PT.
   
 82" CANOPY TREES OR SMALL ORNAMENTAL TREES (10-12' L x 7" W) = 1/7555786372591430664192 PT.
   
 83" CANOPY TREES OR SMALL ORNAMENTAL TREES (10-12' L x 7" W) = 1/15111572745182861328384 PT.
   
 84" CANOPY TREES OR SMALL ORNAMENTAL TREES (10-12' L x 7" W) = 1/30223145490365722656768 PT.
   
 85" CANOPY TREES OR SMALL ORNAMENTAL TREES (10-12' L x 7" W) = 1/60446290980731445313536 PT.
   
 86" CANOPY TREES OR SMALL ORNAMENTAL TREES (10-12' L x 7" W) = 1/120892581961462890627072 PT.
   
 87" CANOPY TREES OR SMALL ORNAMENTAL TREES (10-12' L x 7" W) = 1/241785163922925781254144 PT.
   
 88" CANOPY TREES OR SMALL ORNAMENTAL TREES (10-12' L x 7" W) = 1/483570327845851562508288 PT.
   
 89" CANOPY TREES OR SMALL ORNAMENTAL TREES (10-12' L x 7" W) = 1/967140655691703125016576 PT.
   
 90" CANOPY TREES OR SMALL ORNAMENTAL TREES (10-12' L x 7" W) = 1/1934281311383406250333152 PT.
   
 91" CANOPY TREES OR SMALL ORNAMENTAL TREES (10-12' L x 7" W) = 1/3868562622766812500666304 PT.
   
 92" CANOPY TREES OR SMALL ORNAMENTAL TREES (10-12' L x 7" W) = 1/7737125245533625001332608 PT.
   
 93" CANOPY TREES OR SMALL ORNAMENTAL TREES (10-12' L x 7" W) = 1/15474250491067250026655216 PT.
   
 94" CANOPY TREES OR SMALL ORNAMENTAL TREES (10-12' L x 7" W) = 1/30948500982134500053310432 PT.
   
 95" CANOPY TREES OR SMALL ORNAMENTAL TREES (10-12' L x 7" W) = 1/61897001964269000106620864 PT.
   
 96" CANOPY TREES OR SMALL ORNAMENTAL TREES (10-12' L x 7" W) = 1/123794003928538000213241728 PT.
   
 97" CANOPY TREES OR SMALL ORNAMENTAL TREES (10-12' L x 7" W) = 1/247588007857076000426483456 PT.
   
 98" CANOPY TREES OR SMALL ORNAMENTAL TREES (10-12' L x 7" W) = 1/495176015714152000852966912 PT.
   
 99" CANOPY TREES OR SMALL ORNAMENTAL TREES (10-12' L x 7" W) = 1/990352031428304001705933824 PT.
   
 100" CANOPY TREES OR SMALL ORNAMENTAL TREES (10-12' L x 7" W) = 1/198070406285660800341186768 PT.





**ARCHITECTURAL SYMBOLS :**

	AIT ROOM		ROOM NAME & NUMBER
	BALDING SECTIONS		ROOM AREA & OCCUPANCY
	WALL SECTIONS		ELEVATION TARGET
	PLAN DETAIL OR SECTION DETAIL		WALL TYPE NUMBERS (SEE A32)
	INTERIOR ELEVATIONS (SEE SHEET A33)		DOOR OPENING HORIZES
			COUNT CENTER LINES

**KEYNOTES :**

- CRP - CHALKBOARD/WHITE PINE
- CM - CEMENT MASONRY
- CLP - GLOSET SHELF/FRONT (SEE A32)
- CMV - CABINET UNIT FRONT
- CMV - CABINET UNIT VENTILATOR
- IC - INTERCOM
- IM - ENTRANCE MAT
- IP - INTERIOR PANEL
- FWC - ELECTRIC WATER COOLER
- FE - FIRE EXTINGUISHER & BRACKET
- FC - FIRE EXTINGUISHER & CABINET
- TR - FIRE TRAP REGISTER
- LDG - ELEVATOR
- MC - NOT IN CONTRACT
- PS - PROJECTION SCREEN (SEE A32)
- PROV - PROJECTION SCREEN, WALL MOUNTED
- SHV - SHELVING WITH STANDARDS
- TAB - TABULAR BOARD (SEE A32)
- WB - WHITEBOARD (SEE A32)

**GENERAL NOTES :**

1. FLOOR PLAN - SEE A14
2. ROOM FINISHES - SEE A31
3. OPENING SCHEDULES - SEE A31
4. ELEVATOR SECTIONS - SEE A31 & A32
5. WALL SECTIONS & PANEL DETAILS - SEE A31, A32 & A33
6. LAMINATE COUNT PLANS - SEE A31
7. CABINETWORK DETAILS - SEE A31
8. REFLECTED CEILING PLANS - SEE A31, A32 & A33
9. LARGE SCALE STAIR & ELEVATOR PLANS - SEE A32
10. TYPICAL WALLS ARE 8" CMU (S) UNLESS NOTED OTHERWISE.

ALL WALLS EXTEND TO UNDERFACE OF STRUCTURE ABOVE UNLESS MARKED WITH (U) WHICH INDICATES WALL STOPS AT 4" P.C. J.A.P.  
SEE PLANS FOR WALL FIRE RATINGS.

FLOOR ELEVATION = + 000.00'  
**LOWER LEVEL PLAN**  
 SCALE: 1/16" = 1'-0"



**Larson & Darby Group**  
 Architects Engineers Planners  
 5972 Executive Drive, Suite 100  
 Madison, WI 53719  
 Phone: (608) 276-4400  
 Fax: (608) 276-4488

**Building Systems**  
**General Corp.**  
 5972 Executive Drive, Suite 100  
 Madison, WI 53719  
 Phone: (608) 276-4400  
 Fax: (608) 276-4488

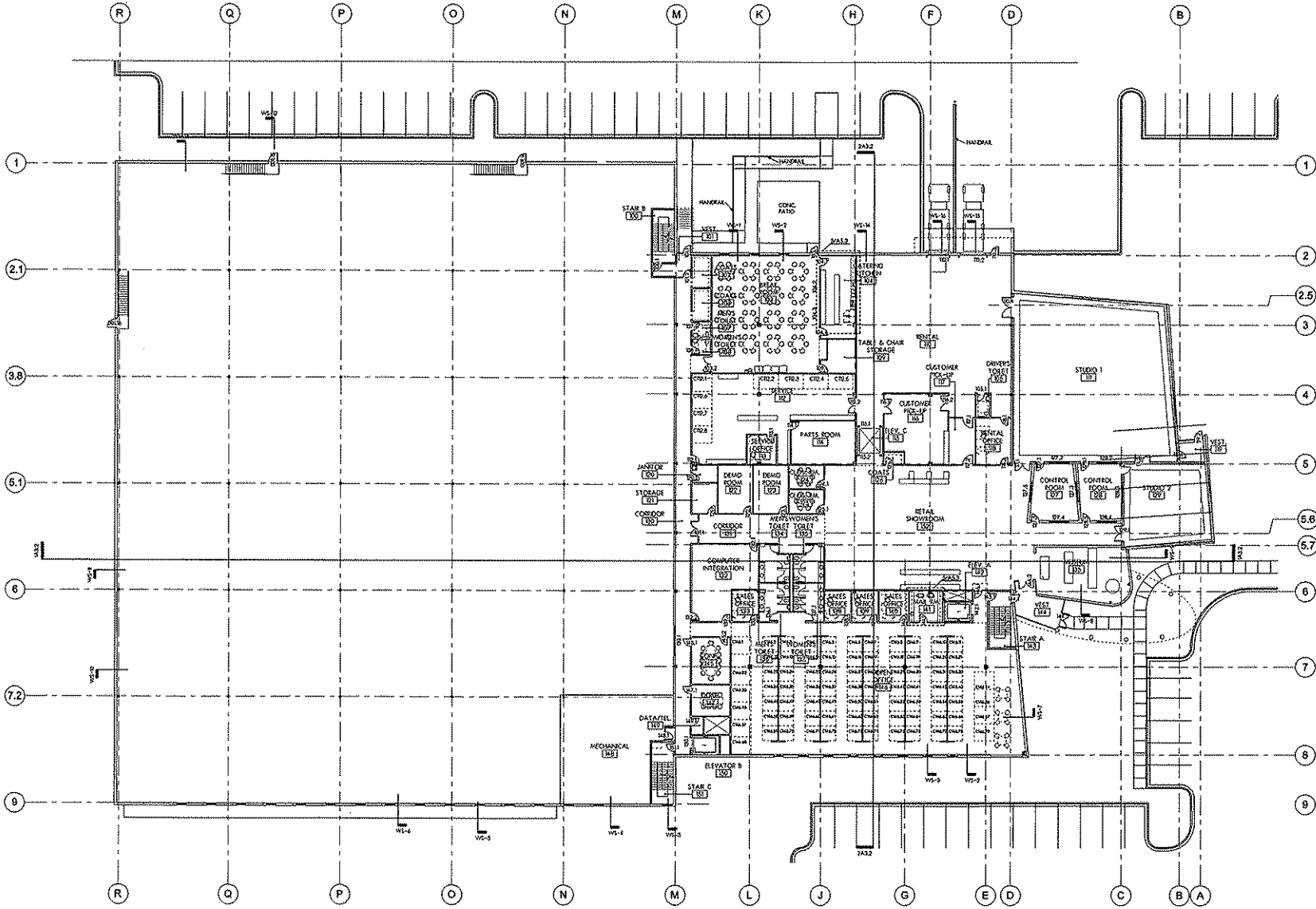
**NEW FACILITY FOR**  
**FULL COMPASS**  
 MADISON, WISCONSIN

PROJECT PRINT  
 Map For Construction  
 Date: 12/22/2008  
 LARSON and DARBY, Inc.  
 architects engineers planners

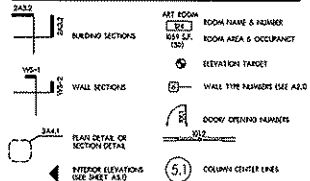
COPYRIGHT 2008  
 All rights reserved. No part of this publication may be reproduced, stored in a retrieval system, or transmitted, in any form or by any means, electronic, mechanical, photocopying, recording, or by any information storage and retrieval system, without the prior written permission of Larson & Darby Group.

DESIGNED FOR:  
 PROJECT NUMBER: 17125  
 SHEET NUMBER: A1.1  
 DRAWN: APPROVED:

DATE: 12-11-2008  
 PROJECT:



**ARCHITECTURAL SYMBOLS :**



**KEYNOTES :**

- 232 - CHALKBOARD/WHITE BOARD
- CA - CASEWORK/SHOPS
- CH - CHERRY GREENWOOD OIL WOOD
- CM - CEMENT UNIT REARS
- CS - CEMENT UNIT 'SLOPE' SIDE
- DA - DOWNPOUT
- EM - ENTRANCE MAT
- EP - ELECTRICAL PANEL
- EW - EXISTING WATER COOLER
- FE - FIRE EXTINGUISHER & MOUNT
- FC - FIRE EXTINGUISHER & CABINET
- FR - FIRE FIGHT REGISTER
- LEP - LOCKER/LOCKER/ST
- MC - MOUNT BY CONTRACT
- PC - PROJECTION SCREEN BEING ADJUSTED
- PR - PROJECTION SCREEN WALL ADJUSTED
- VE - VENEER WITH STAIRCASE
- WC - WOODWORK (LENGTH IN FEET)
- WB - WOODWORK (LENGTH IN FEET)

**GENERAL NOTES :**

1. ROOM PLAN - SEE A3.1
2. ROOM FLOORING - SEE A3.2
3. WINDOW SCHEDULE - SEE A3.1
4. EXTERIOR ELEVATIONS - SEE A3.1 & A3.2
5. WALL SECTIONS & PLAN DETAILS - SEE A3.1, A3.2 & A3.3
6. LARGE SCALE TOILET PLAN - SEE A3.1
7. SEAWORKER ELEVATION - SEE A3.1
8. RELOCATED CEILING PLANS - SEE A3.1, A3.2 & A3.3
9. LARGE SCALE STAIR & ELEVATOR PLANS - SEE A3.1
10. TYPICAL WALLS ARE 8" CMU (3) UNLESS NOTED OTHERWISE.
11. WALLS INTEND TO EXIST OR OF STRUCTURE ABOVE PRESSURE MARKED WITH 'E' WHICH INDICATE WALL STOPS AT 9'-4" A.F.F. SEE PLANS FOR WALL TOE MATING.

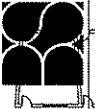
FLOOR ELEVATION = +00.00'  
**MAIN LEVEL PLAN**  
 SCALE: 1/16" = 1'-0"



**Larson & Darby Group**  
 Architects Engineers Planners



**Building Systems**  
 General Corp.  
 5972 Executive Drive - Suite 100  
 Middleton, Wisconsin 53719  
 General Office - 200 New York St., Columbia, S.C. 29201 Tel: 803.732.2229 Fax: 803.732.2225  
 Fax: (608) 276-4488

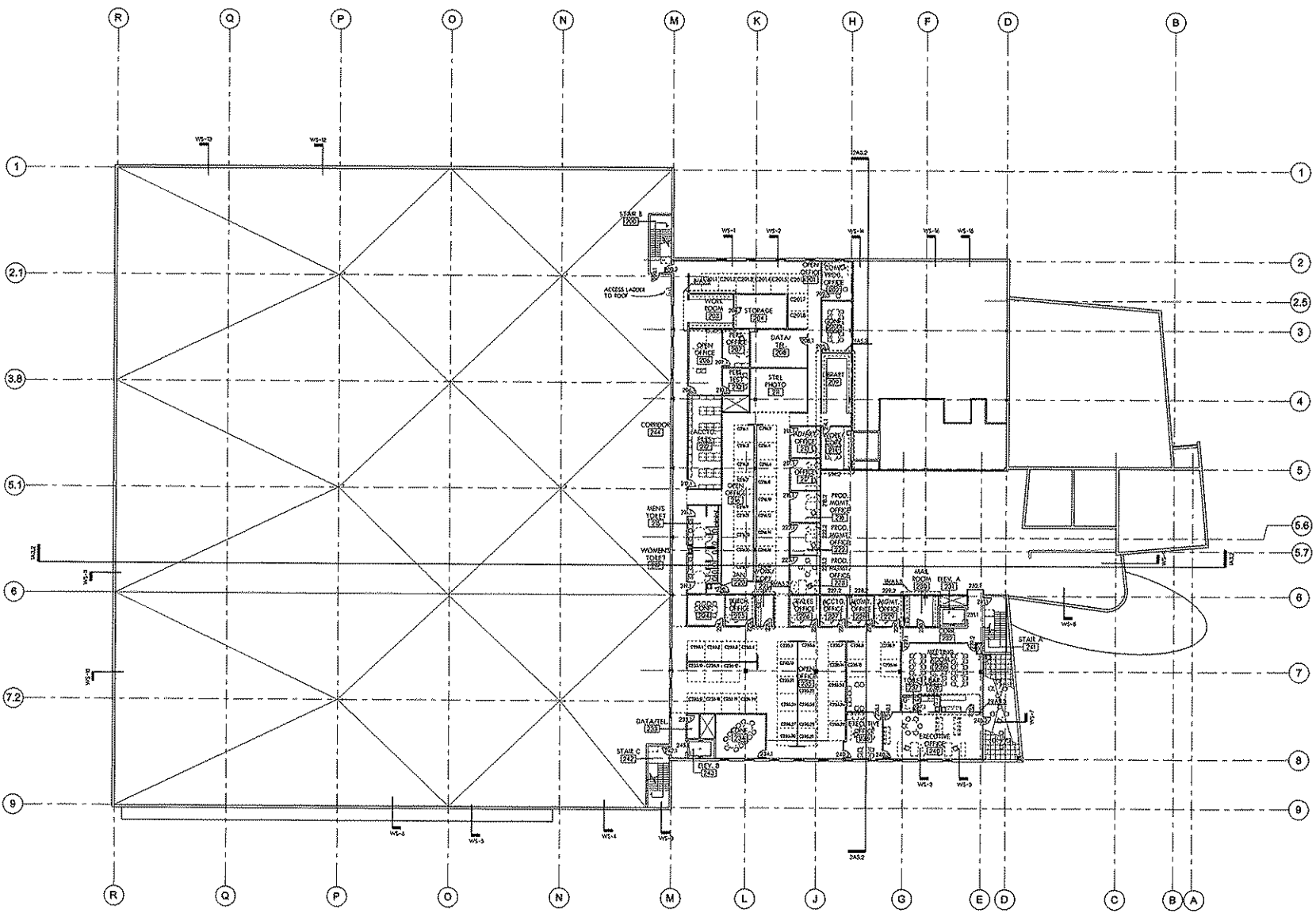


**NEW FACILITY FOR**  
**FULL COMPASS**  
 MADISON, WISCONSIN

PROGRESS PRINT  
 Not For Construction  
 Date: 03/20/2008  
 LARSON and DARBY, Inc.  
 architect-engineer-planner

COPYRIGHT 2008  
 All Rights Reserved. All other  
 rights reserved to the  
 respective owners of the  
 content herein.  
 Larson & Darby Group

ISSUED FOR:  
 DATE: 03-21-2008  
 DRAWN: 17/125  
 SHEET NUMBER: A12  
 APPROVED:



**ARCHITECTURAL SYMBOLS :**

	ROOM SECTIONS		WALL SECTIONS		PLAN DETAIL OR SECTION DETAIL
	ELEVATION TARGET		DOOR/ OPENING FINISHES		COLUMN CENTER LINES

INTERIOR ELEVATIONS USE SHEET A50

**KEYNOTES :**

CS22 - WALL/DOOR/DOOR THRESHOLD IN FEET	CS1 - CASE/DOOR/DOOR THRESHOLD	CS10 - CLOSET SHELVING/OTDR WALLS	CS11 - CABINET SHELVING	CS12 - CABINET UNIT VENTILATOR	CS13 - SCHEDULE
CS14 - INTERIOR WALL FINISH	CS15 - INTERIOR WALL FINISH	CS16 - INTERIOR WALL FINISH	CS17 - INTERIOR WALL FINISH	CS18 - INTERIOR WALL FINISH	CS19 - INTERIOR WALL FINISH
CS20 - INTERIOR WALL FINISH	CS21 - INTERIOR WALL FINISH	CS22 - INTERIOR WALL FINISH	CS23 - INTERIOR WALL FINISH	CS24 - INTERIOR WALL FINISH	CS25 - INTERIOR WALL FINISH

- GENERAL NOTES :**
1. ROOF PLAN - SEE A14
  2. ROOM FINISHES - SEE A23
  3. CORRIDOR SCHEDULE - SEE A23
  4. EXTENSION FINISHES - SEE A23 & A32
  5. WALL SECTION & PLAN FINISHES - SEE A11, A42 & A43
  6. LARGE SCALE FLOOR FINISHES - SEE A41
  7. CROWNMOULD MILLWORK - SEE A35
  8. RECEPTORY FINISHES - SEE A42 & A43
  9. LARGE SCALE STAIR & ELEVATOR FINISHES - SEE A23
  10. TYPICAL WALLS ARE 8" CMU (1) UNLESS NOTED OTHERWISE. ALL WALLS EXPOSED TO UNDERLAY OF STRUCTURE ABOVE UNLESS INDICATED WITH (U) WHICH INDICATES WALL STOPS AT 7'-4" AFFL. SEE PLANS FOR WALL THICKNESS.

DATE: 03-27-2008  
 PROJECT NUMBER: 17125  
 SHEET NUMBER: A13

REVISION: 00000  
**UPPER LEVEL PLAN**  
 SCALE: 1/16" = 1'-0"



PROGRESS PRINT  
 Not For Construction  
 Date: 03-27-2008  
 LARSON and DARBY, Inc.  
 ARCHITECTS

ISSUED FOR:	APPROVED:
DRAWN:	

NEW FACILITY FOR  
**FULL COMPASS**  
 MADISON, WISCONSIN

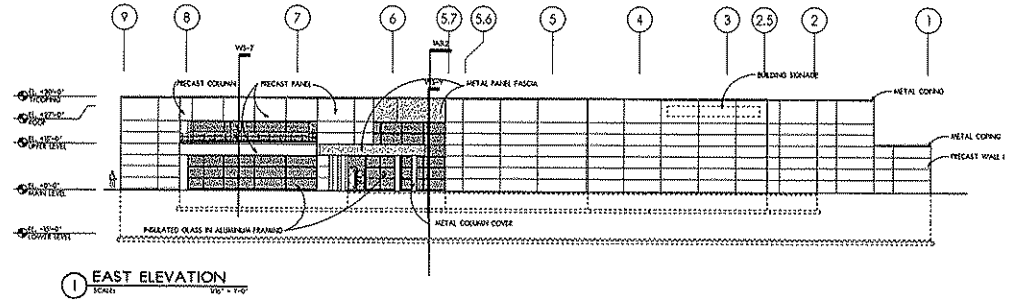


**Building Systems General Corp.**  
 5972 Ex. 100, Dr.  
 Madison, Wisconsin 53719  
 Phone: (608) 276-4400  
 Fax: (608) 276-4488

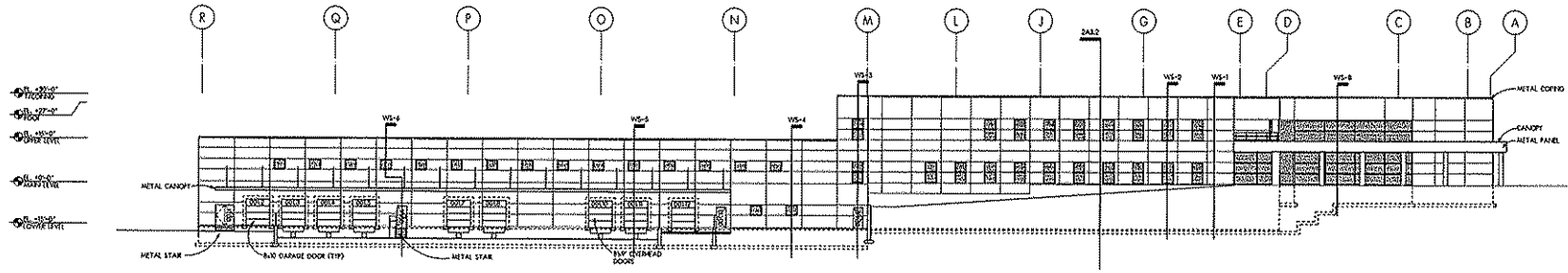


**Larson & Darby Group**  
 Architects Engineers Planners

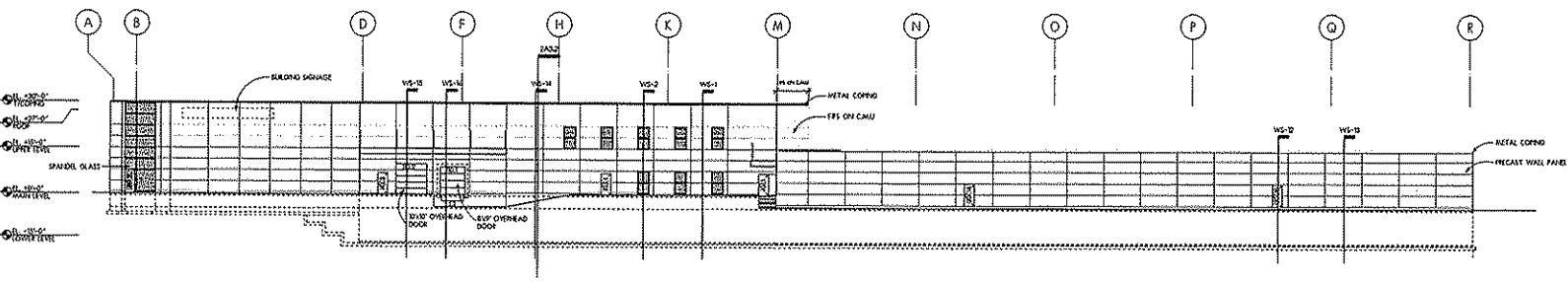




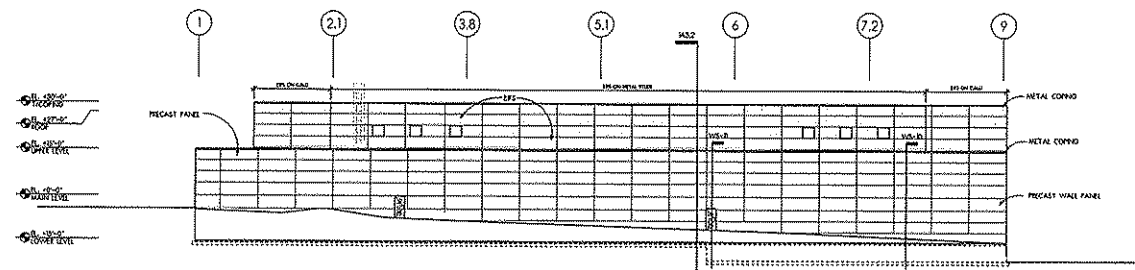
1 EAST ELEVATION  
SCALE: 1/8" = 1'-0"



2 SOUTH ELEVATION  
SCALE: 1/8" = 1'-0"

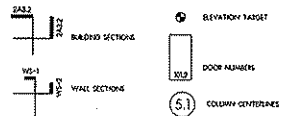


3 NORTH ELEVATION  
SCALE: 1/8" = 1'-0"



4 WEST ELEVATION  
SCALE: 1/8" = 1'-0"

ARCHITECTURAL SYMBOLS :



KEYNOTES :

- AR - ARCHITECTURAL COVER
- CS - DOWNSPOUT
- FB - FACE BRICK
- IB - FINISHED BY OTHER
- Q1 - GLASS TYPE (SEE SPEC)
- Q2 - GLASS TYPE (SEE SPEC)
- Q3 - GLASS TYPE (SEE SPEC)
- Q4 - GLASS TYPE (SEE SPEC)
- Q5 - GLASS TYPE (SEE SPEC)
- Q6 - GLASS TYPE (SEE SPEC)
- Q7 - GLASS TYPE (SEE SPEC)
- Q8 - GLASS TYPE (SEE SPEC)
- Q9 - GLASS TYPE (SEE SPEC)
- Q10 - GLASS TYPE (SEE SPEC)
- Q11 - GLASS TYPE (SEE SPEC)
- Q12 - GLASS TYPE (SEE SPEC)
- Q13 - GLASS TYPE (SEE SPEC)
- Q14 - GLASS TYPE (SEE SPEC)
- Q15 - GLASS TYPE (SEE SPEC)
- Q16 - GLASS TYPE (SEE SPEC)
- Q17 - GLASS TYPE (SEE SPEC)
- Q18 - GLASS TYPE (SEE SPEC)
- Q19 - GLASS TYPE (SEE SPEC)
- Q20 - GLASS TYPE (SEE SPEC)
- Q21 - GLASS TYPE (SEE SPEC)
- Q22 - GLASS TYPE (SEE SPEC)
- Q23 - GLASS TYPE (SEE SPEC)
- Q24 - GLASS TYPE (SEE SPEC)
- Q25 - GLASS TYPE (SEE SPEC)
- Q26 - GLASS TYPE (SEE SPEC)
- Q27 - GLASS TYPE (SEE SPEC)
- Q28 - GLASS TYPE (SEE SPEC)
- Q29 - GLASS TYPE (SEE SPEC)
- Q30 - GLASS TYPE (SEE SPEC)
- Q31 - GLASS TYPE (SEE SPEC)
- Q32 - GLASS TYPE (SEE SPEC)
- Q33 - GLASS TYPE (SEE SPEC)
- Q34 - GLASS TYPE (SEE SPEC)
- Q35 - GLASS TYPE (SEE SPEC)
- Q36 - GLASS TYPE (SEE SPEC)
- Q37 - GLASS TYPE (SEE SPEC)
- Q38 - GLASS TYPE (SEE SPEC)
- Q39 - GLASS TYPE (SEE SPEC)
- Q40 - GLASS TYPE (SEE SPEC)
- Q41 - GLASS TYPE (SEE SPEC)
- Q42 - GLASS TYPE (SEE SPEC)
- Q43 - GLASS TYPE (SEE SPEC)
- Q44 - GLASS TYPE (SEE SPEC)
- Q45 - GLASS TYPE (SEE SPEC)
- Q46 - GLASS TYPE (SEE SPEC)
- Q47 - GLASS TYPE (SEE SPEC)
- Q48 - GLASS TYPE (SEE SPEC)
- Q49 - GLASS TYPE (SEE SPEC)
- Q50 - GLASS TYPE (SEE SPEC)
- Q51 - GLASS TYPE (SEE SPEC)
- Q52 - GLASS TYPE (SEE SPEC)
- Q53 - GLASS TYPE (SEE SPEC)
- Q54 - GLASS TYPE (SEE SPEC)
- Q55 - GLASS TYPE (SEE SPEC)
- Q56 - GLASS TYPE (SEE SPEC)
- Q57 - GLASS TYPE (SEE SPEC)
- Q58 - GLASS TYPE (SEE SPEC)
- Q59 - GLASS TYPE (SEE SPEC)
- Q60 - GLASS TYPE (SEE SPEC)
- Q61 - GLASS TYPE (SEE SPEC)
- Q62 - GLASS TYPE (SEE SPEC)
- Q63 - GLASS TYPE (SEE SPEC)
- Q64 - GLASS TYPE (SEE SPEC)
- Q65 - GLASS TYPE (SEE SPEC)
- Q66 - GLASS TYPE (SEE SPEC)
- Q67 - GLASS TYPE (SEE SPEC)
- Q68 - GLASS TYPE (SEE SPEC)
- Q69 - GLASS TYPE (SEE SPEC)
- Q70 - GLASS TYPE (SEE SPEC)
- Q71 - GLASS TYPE (SEE SPEC)
- Q72 - GLASS TYPE (SEE SPEC)
- Q73 - GLASS TYPE (SEE SPEC)
- Q74 - GLASS TYPE (SEE SPEC)
- Q75 - GLASS TYPE (SEE SPEC)
- Q76 - GLASS TYPE (SEE SPEC)
- Q77 - GLASS TYPE (SEE SPEC)
- Q78 - GLASS TYPE (SEE SPEC)
- Q79 - GLASS TYPE (SEE SPEC)
- Q80 - GLASS TYPE (SEE SPEC)
- Q81 - GLASS TYPE (SEE SPEC)
- Q82 - GLASS TYPE (SEE SPEC)
- Q83 - GLASS TYPE (SEE SPEC)
- Q84 - GLASS TYPE (SEE SPEC)
- Q85 - GLASS TYPE (SEE SPEC)
- Q86 - GLASS TYPE (SEE SPEC)
- Q87 - GLASS TYPE (SEE SPEC)
- Q88 - GLASS TYPE (SEE SPEC)
- Q89 - GLASS TYPE (SEE SPEC)
- Q90 - GLASS TYPE (SEE SPEC)
- Q91 - GLASS TYPE (SEE SPEC)
- Q92 - GLASS TYPE (SEE SPEC)
- Q93 - GLASS TYPE (SEE SPEC)
- Q94 - GLASS TYPE (SEE SPEC)
- Q95 - GLASS TYPE (SEE SPEC)
- Q96 - GLASS TYPE (SEE SPEC)
- Q97 - GLASS TYPE (SEE SPEC)
- Q98 - GLASS TYPE (SEE SPEC)
- Q99 - GLASS TYPE (SEE SPEC)
- Q100 - GLASS TYPE (SEE SPEC)

Larson & Darby Group  
Architects Engineers Planners  
Madison, Wisconsin 53719  
Phone: (608) 278-4400 Fax: (608) 278-4408



Building Systems  
General Corp.  
5972 Executive Drive - Suite 100  
Madison, Wisconsin 53719  
Phone: (608) 278-4400 Fax: (608) 278-4408



NEW FACILITY FOR  
FULL COMPASS  
MADISON, WISCONSIN

PROGRESS PERMIT  
Not For Construction  
Sect. 531.25(2)  
LARSON and DARBY, Inc.  
an architect-engineering firm

ISSUED FOR:  
PROJECT NUMBER  
17125  
SHEET NUMBER  
A3.1

DATE: 08-11-2008  
PROJECT NUMBER  
17125  
SHEET NUMBER  
A3.1

EXTERIOR ELEVATIONS  
SCALE: 1/8" = 1'-0"