

Consultant

Notes

**SITE DEVELOPMENT DATA:**

**DENSITIES:**

Lot Area	116,555 S.F. or 2.6757 acres
Dwelling Units	40 units
Lot Area / D.U.	2,914 S.F./unit
Density	14.9 units/acre
Open Space	23,000 S.F.
Open Space/DU	575 S.F.

**DWELLING UNIT MIX:**

3 bedrooms	40
------------	----

**VEHICLE PARKING STALLS:**

Surface	10
Garage	80
Total	90
Ratio	2.25 stalls/unit

**BICYCLE PARKING STALLS:**

Surface	6
Garage	40
Total	46

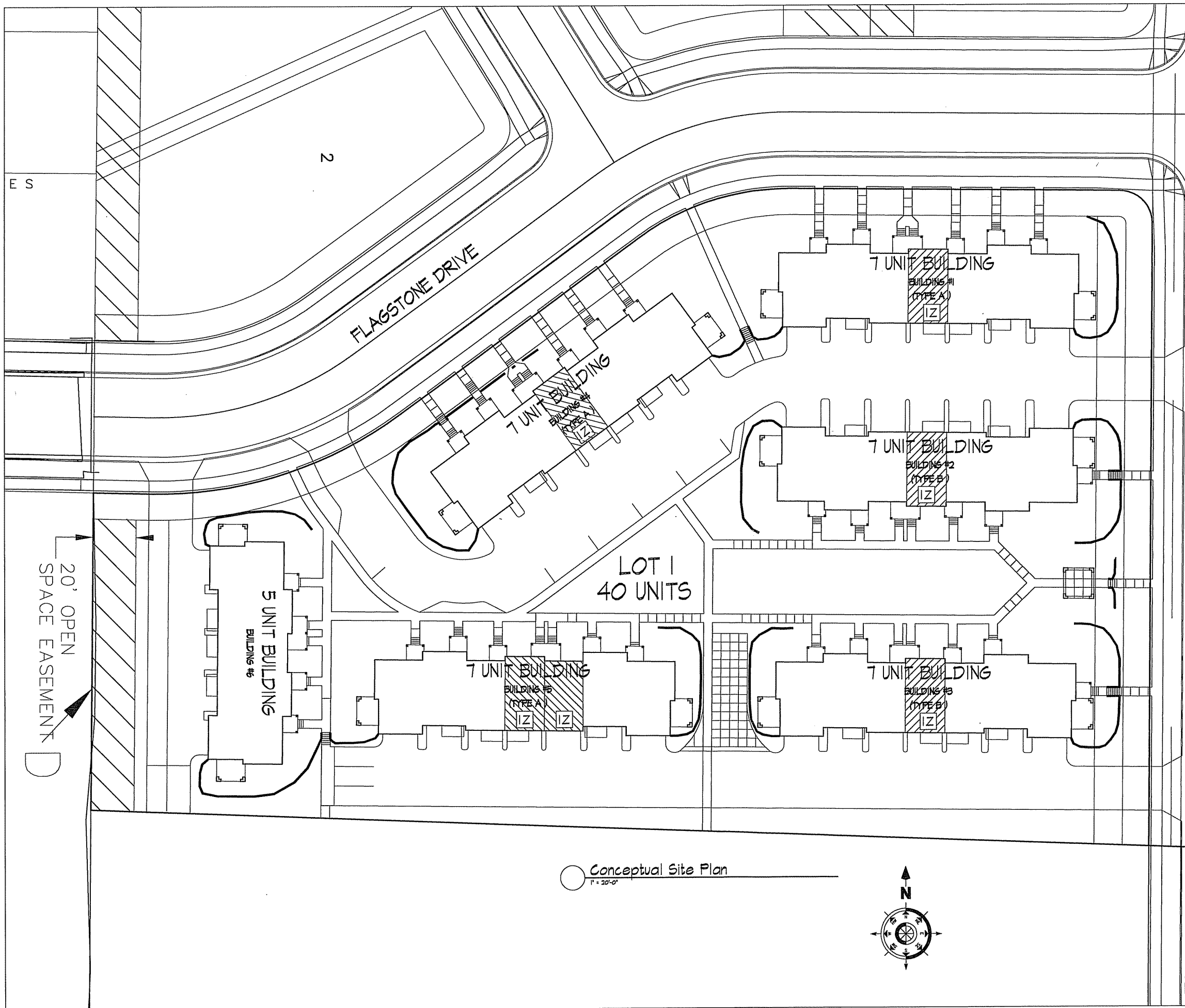
Revisions  
Issued - Oct. 3, 2006  
Z Pre-App Inter Dept Submittal- 10/19/06

Project Title  
Mill Creek Townhomes

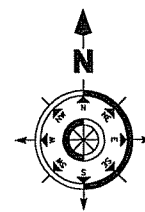
Drawing Title  
Conceptual Site Plan

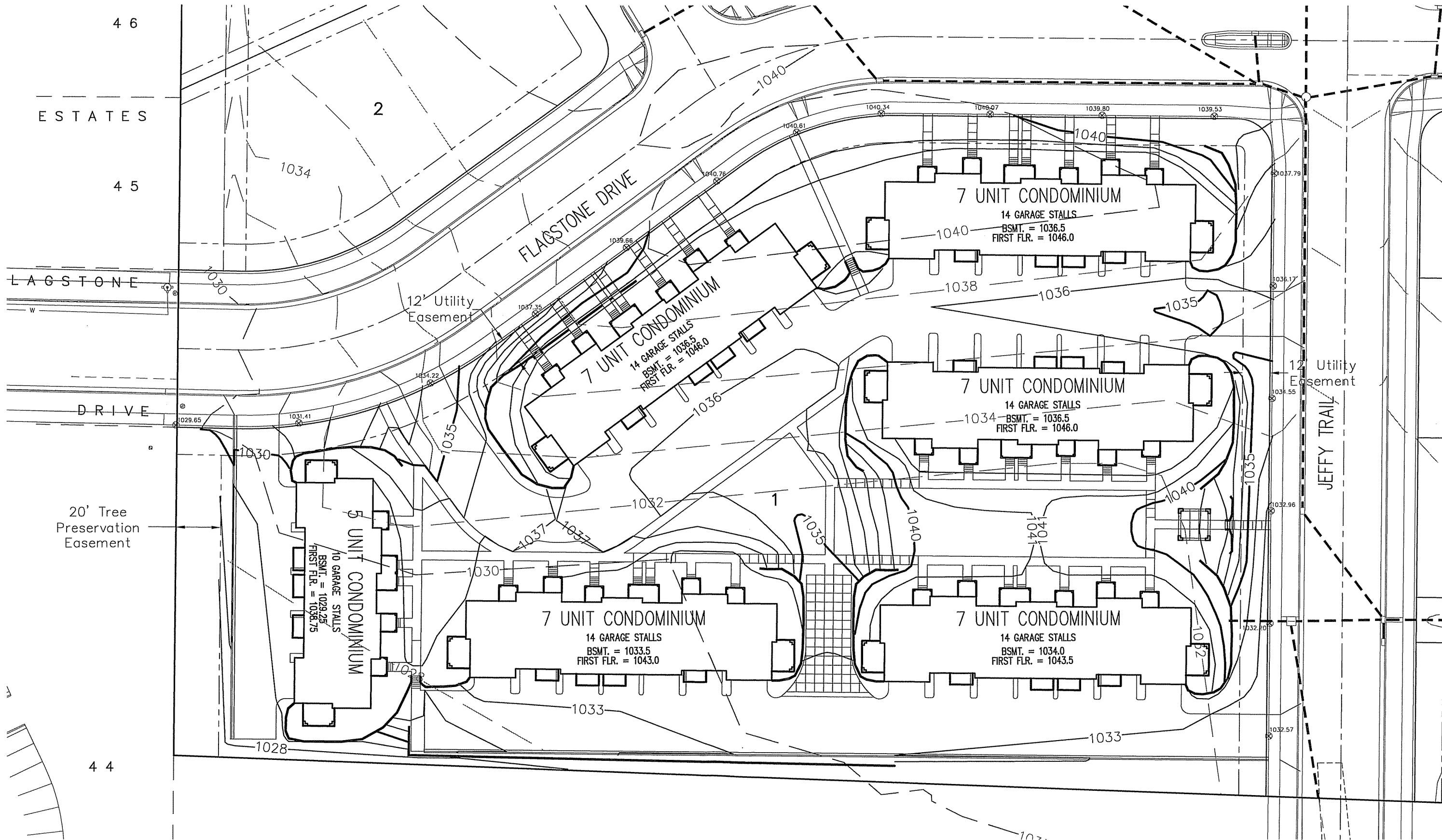
Project No. Drawing No.  
0520 C-1.1

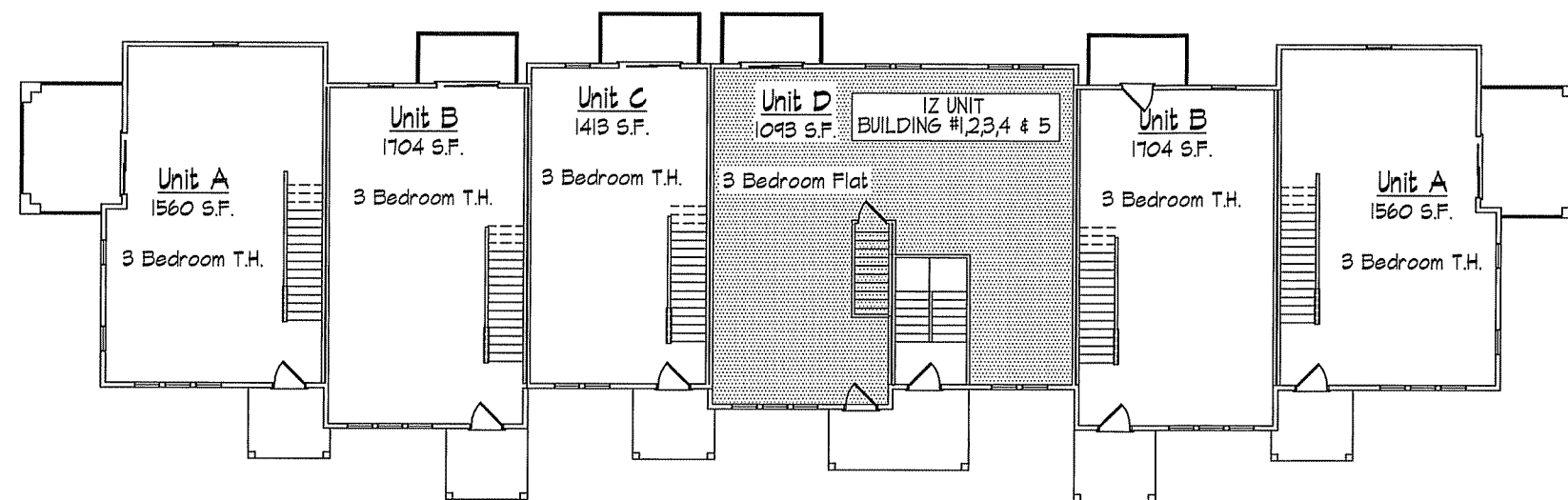
This document contains confidential or proprietary information of Knothe & Bruce Architects. Neither the document nor the information herein is to be reproduced, distributed, used, or disclosed in whole or in part, except as specifically authorized by Knothe & Bruce Architects. Knothe & Bruce Architects is a Limited Liability Company of Wisconsin.



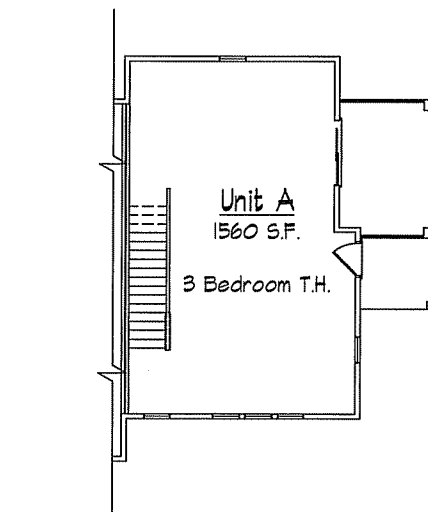
Conceptual Site Plan  
1" = 20'-0"



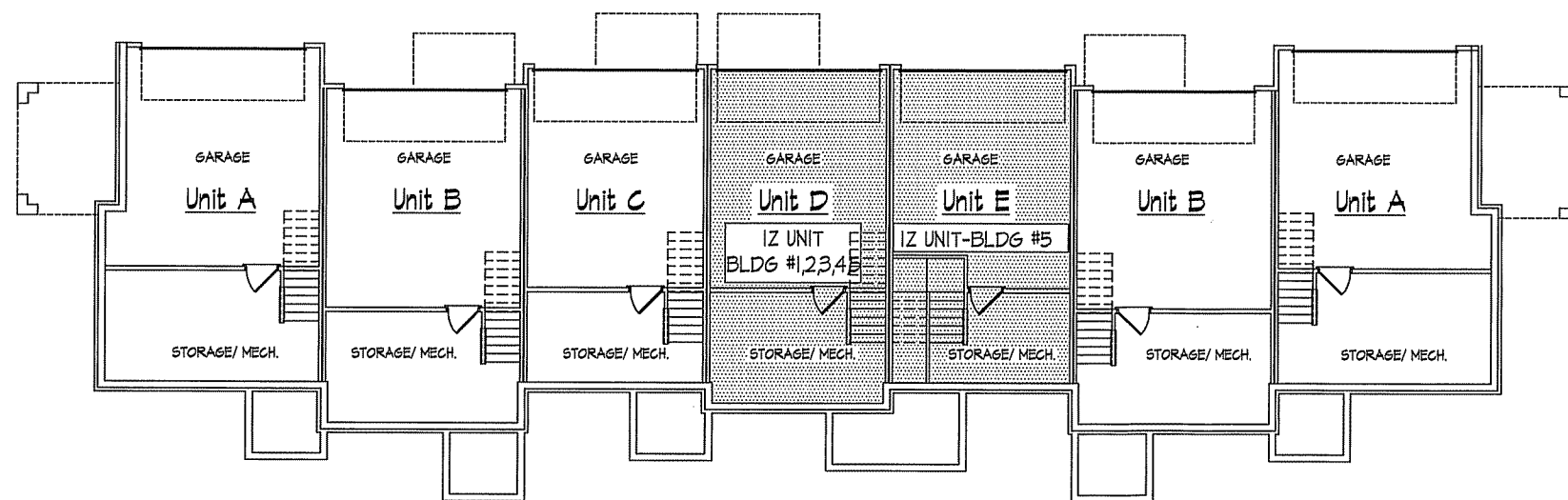




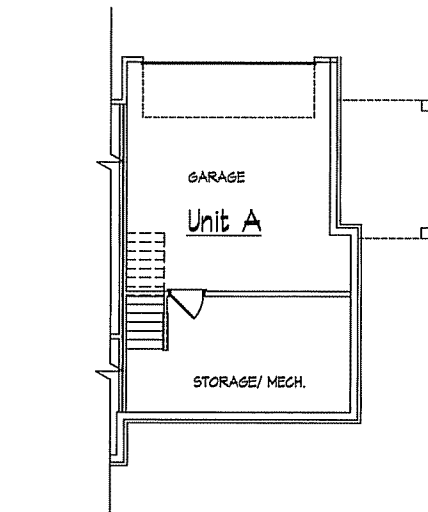
○ FIRST FLOOR PLAN  
1/8" = 1'-0" 7 UNIT TYPE 'A'



○ PARTIAL FIRST FLOOR  
1/8" = 1'-0" 7 UNIT TYPE 'B'



○ BASEMENT FLOOR PLAN  
1/8" = 1'-0" 7 UNIT TYPE 'A'



○ PARTIAL BASEMENT FLOOR  
1/8" = 1'-0" 7 UNIT TYPE 'B'

Revisions  
12 Pre-app. Inter. Dept. Submittal - October 14, 2006

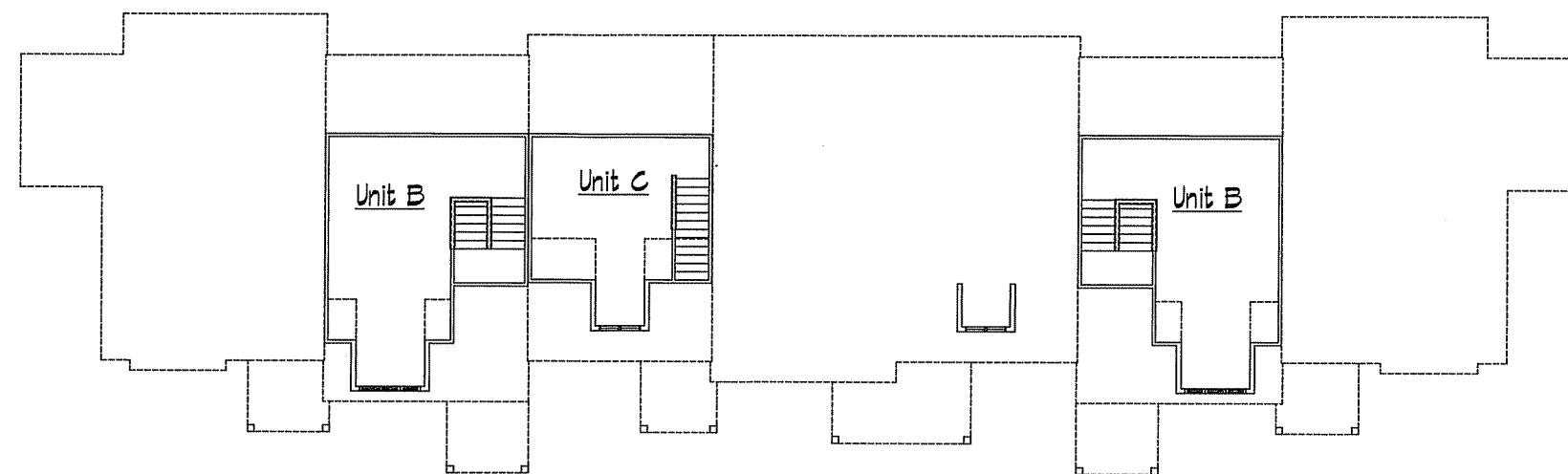
Project Title  
Mill Creek Townhomes

Southwest Corner of  
Flagstone Dr. & Jeffy  
Trail

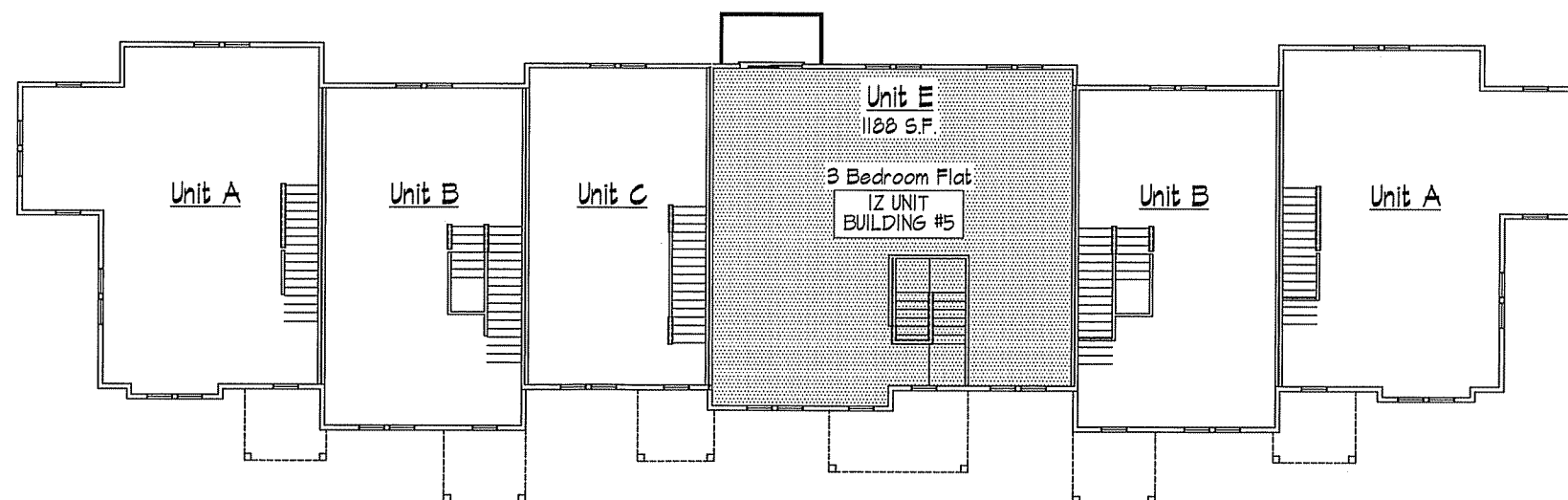
Drawing Title  
Basement/ 1st Fl. Plans  
7 Unit Building

Project No. 0520 Drawing No. A-1.1

This document contains confidential or proprietary information of Knothe & Bruce Architects. Further dissemination of this information is to be restricted, distributed, used, or disclosed in whole or in part, except as specifically authorized by Knothe & Bruce Architects, Knothe & Bruce Architects & Limited Liability Company of Wisconsin.



LOFT FLOOR PLAN 704 SF  
1/8" = 1'-0" 7 UNIT TYPE "A" AND "B"



SECOND FLOOR PLAN 4835 SF  
1/8" = 1'-0" 7 UNIT TYPE "A" AND "B"

Revisions  
12 Pre-app. Inter. Dept. Submittal - October 14, 2006

Project Title  
Mill Creek Townhomes

Southwest Corner of  
Flagstone Dr. & Jeffy  
Trail

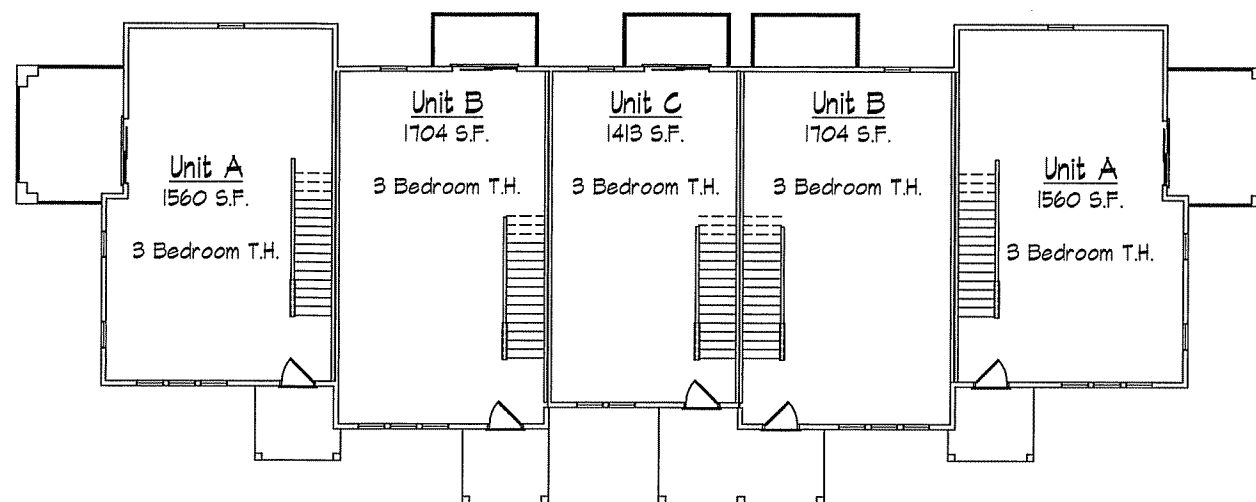
Drawing Title  
Second/Loft Fl. Plans  
7 Unit Building

Project No. Drawing No.  
0520 A-1.2

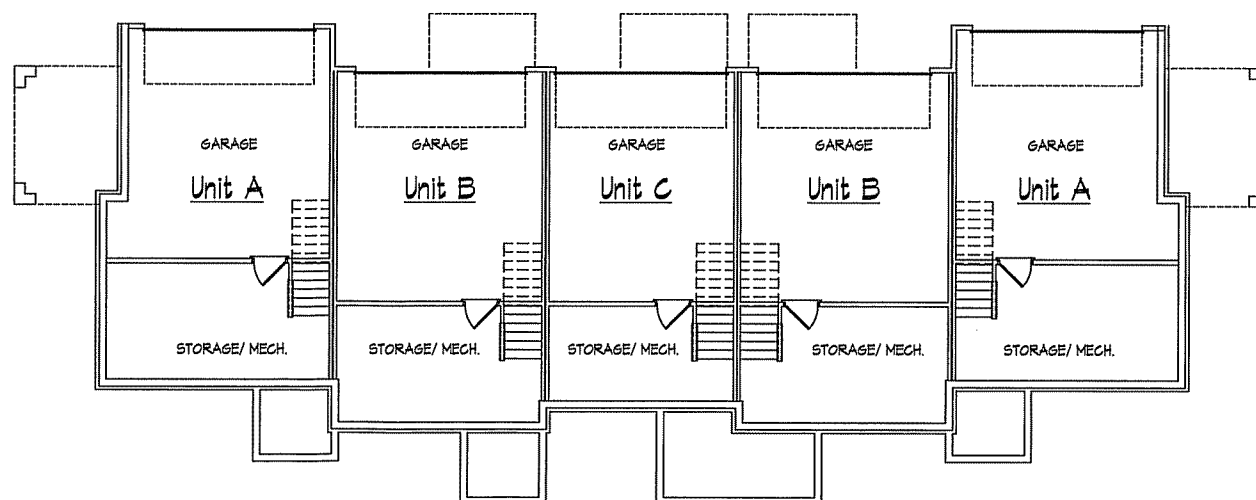
This document is the property of KNOTHE & BRUCE ARCHITECTS. It is to be reproduced, distributed, used, or disclosed in whole or in part, except as specifically authorized by KNOTHE & BRUCE ARCHITECTS, KNOTHE & BRUCE ARCHITECTS A LIMITED LIABILITY COMPANY OF WISCONSIN.

Consultant

Notes



**FIRST FLOOR PLAN** 3371 SF  
 1/8" = 1'-0" 5 UNIT



**BASEMENT FLOOR PLAN**  
 1/8" = 1'-0" 5 UNIT

Revisions  
 12 Pre-app. Inter. Dept. Submittal - October 14, 2006

Project Title  
 Mill Creek Townhomes

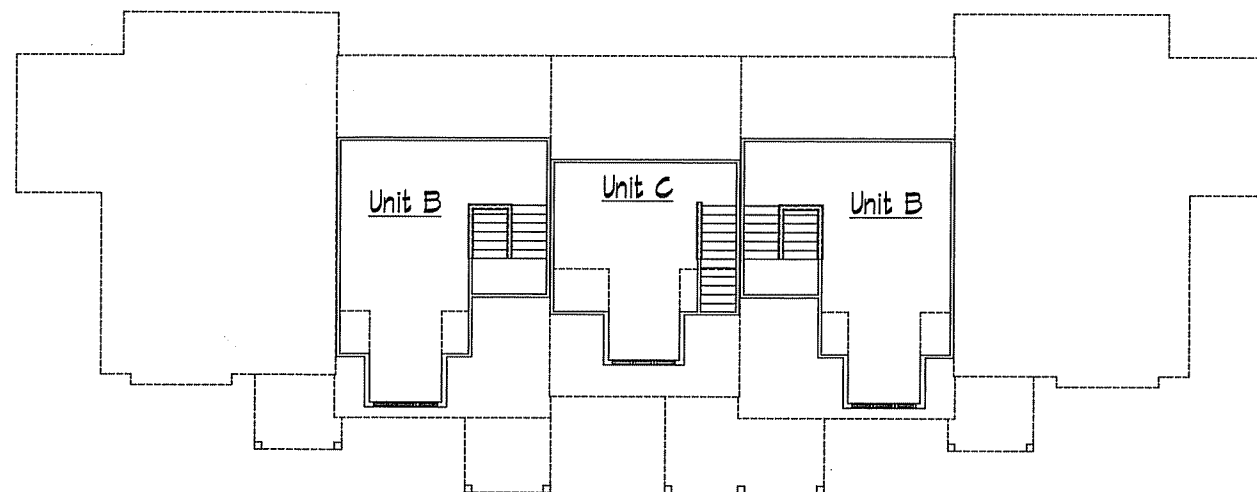
Southwest Corner of  
 Flagstone Dr. & Jeffy  
 Trail

Drawing Title  
 Basement/ 1st Fl. Plans  
 5 Unit Building

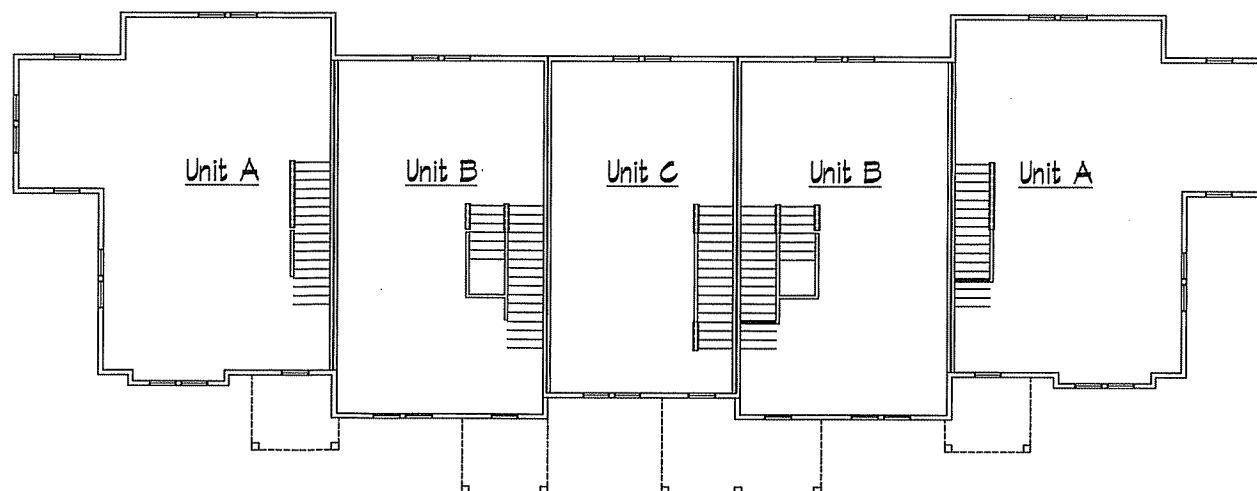
Project No. Drawing No.

0520 A-1.3

This document contains confidential or proprietary information of Knothe & Bruce Architects. Further the document and the information herein is to be reproduced, distributed, used, or disclosed, in whole or in part, without the express written permission of Knothe & Bruce Architects. Knothe & Bruce Architects is a Limited Liability Company of Wisconsin.



LOFT FLOOR PLAN  
 1/8" = 1'-0" 5 UNIT



SECOND FLOOR PLAN  
 1/8" = 1'-0" 5 UNIT

Revisions  
 12 Pre-app. Inter. Dept. Submittal - October 19, 2006

Project Title  
 Mill Creek Townhomes

Southwest Corner of  
 Flagstone Dr. & Jeffy  
 Trail

Drawing Title  
 Second/ Loft Fl. Plans  
 5 Unit Building

Project No. Drawing No.  
 0520 A-1.4

Consultant

Notes

**TYPICAL MATERIALS:**

- ASPHALT SHINGLES
- 1x6 HARDI-PLANK FASCIA
- 5/4x10 HARDI-PLANK RAKE TRIM
- 1x4 OVER 5/4x10 HARDI-PLANK FRIEZE BOARD
- HARDI-PLANK SIDING
- 5/4x6 CORNER TRIM
- HARDI-PLANK SIDING
- VINYL WINDOW
- HARDI-PLANK WINDOW TRIM
- SCREEN PORCH
- PREFABRICATED ALUMINUM RAILING
- MASONRY VENEER



○ REAR ELEVATION  
1/8" = 1'-0" 7 UNIT TYPE "A" AND "B"



○ PARTIAL FRONT ELEVATION  
1/8" = 1'-0" 7 UNIT TYPE "B"



○ FRONT ELEVATION  
1/8" = 1'-0" 7 UNIT TYPE "A"



○ SIDE ELEVATION  
1/8" = 1'-0" 7 UNIT TYPE "B"



○ SIDE ELEVATION  
1/8" = 1'-0" 7 UNIT TYPE "A"

Revisions  
12 Pre-app. Inter. Dept. Submittal - October 19, 2006

Project Title  
Mill Creek Townhomes

Southwest Corner of  
Flagstone Dr. & Jeffy  
Trail

Drawing Title  
Elevations  
7 Unit Building

Project No. Drawing No.  
0520 A-2.1

This document contains confidential or proprietary information of Knothe & Bruce Architects. No portion of this document may be reproduced, distributed, used, or published, either in whole or in part, except as specifically authorized by Knothe & Bruce Architects. Knothe & Bruce Architects is a Limited Liability Company of Wisconsin.

Consultant

Notes



○ SIDE ELEVATION  
1/8" = 1'-0" 5 UNIT

**TYPICAL MATERIALS:**

- ASPHALT SHINGLES
- 1x8 HARDI-PLANK FASCIA
- 5/4x10 HARDI-PLANK RAKE TRIM
- 1x4 OVER 5/4x10 HARDI-PLANK FRIEZE BOARD
- HARDI-PLANK SIDING
- 5/4x6 CORNER TRIM
- HARDI-PLANK SIDING
- VINYL WINDOW
- HARDI-PLANK WINDOW TRIM
- SCREEN PORCH
- PREFABRICATED ALUMINUM RAILING
- MASONRY VENEER



○ REAR ELEVATION  
1/8" = 1'-0" 5 UNIT



○ FRONT ELEVATION  
1/8" = 1'-0" 5 UNIT

**Revisions**

12 Pre-app. Inter. Dept. Submittal - October 14, 2006

Project Title  
Mill Creek Townhomes

Southwest Corner of  
Flagstone Dr. & Jeffy  
Trail

Drawing Title  
Elevations  
5 Unit Building

Project No. Drawing No.  
0520 A-2.2

This document contains confidential or proprietary information of Knothe & Bruce Architects. Neither the document nor the information herein is to be reproduced, distributed, used, or disclosed, either in whole or in part, except as specifically authorized by Knothe & Bruce Architects. Knothe & Bruce Architects is a Limited Liability Company of Wisconsin.