

**TRAFFIC ROUTES FOR
TOWER CRANE INSTALL**
WEDNESDAY, APRIL 18
TO SUNDAY APRIL 22

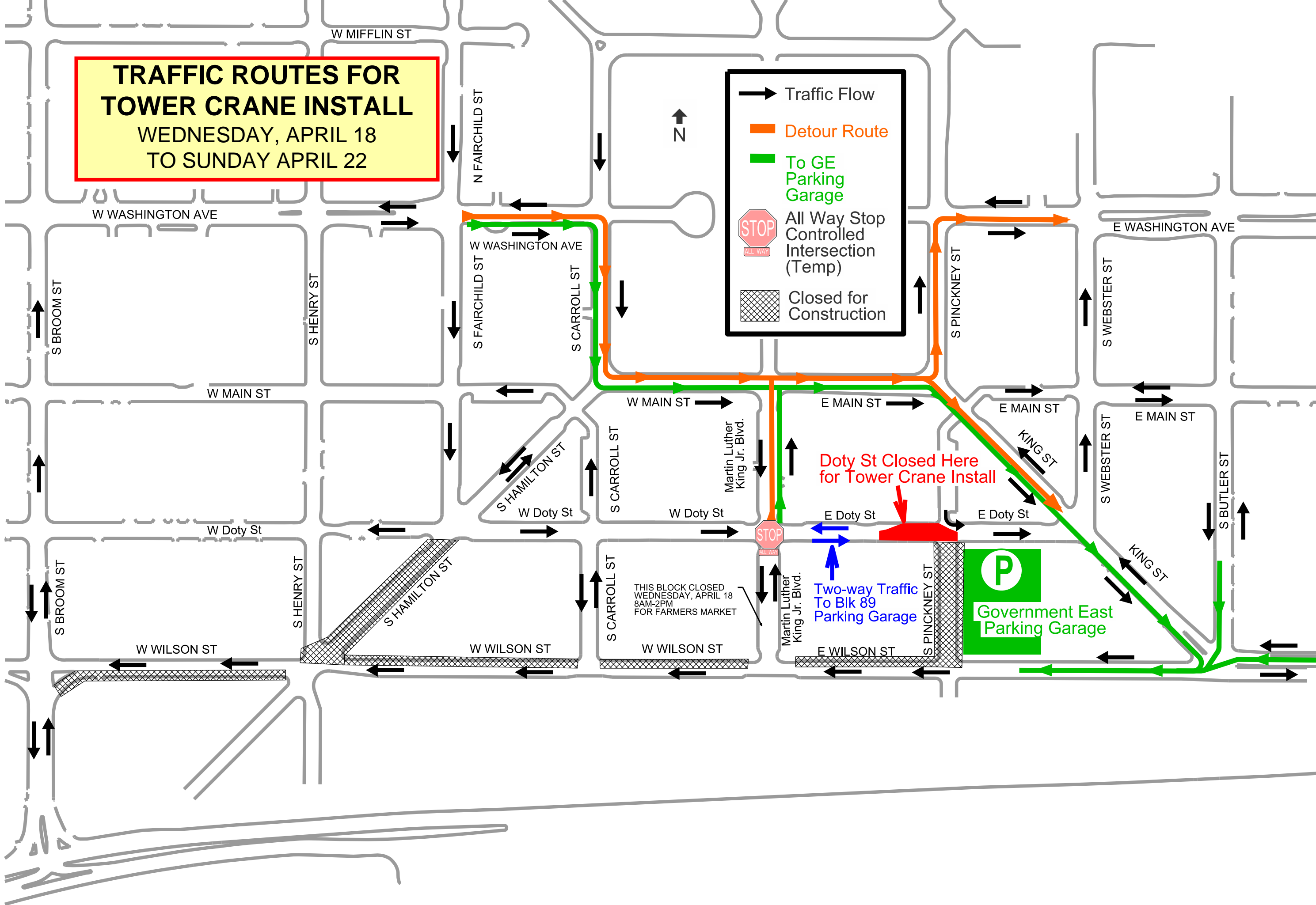
→ Traffic Flow

— Detour Route

— To GE Parking Garage

STOP ALL WAY
All Way Stop Controlled Intersection (Temp)

▨ Closed for Construction



Doty St Closed Here
for Tower Crane Install

Two-way Traffic
To Blk 89
Parking Garage

Government East
Parking Garage

THIS BLOCK CLOSED
WEDNESDAY, APRIL 18
8AM-2PM
FOR FARMERS MARKET