

# CITY OF MADISON: IMPAIRED DRIVING CRASH DATA 2026

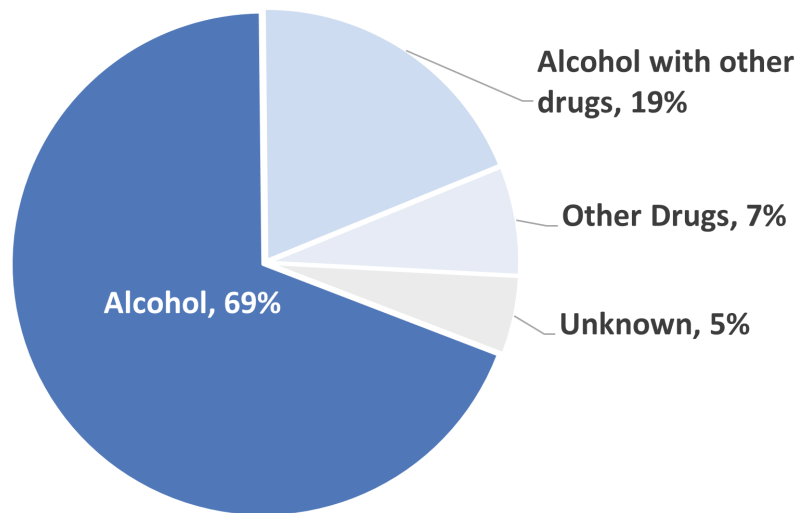
**Purpose:** This report is designed to help the City of Madison understand risks for impaired driving based on driver demographics, types of substances consumed, and when impaired driving crashes occur. Combining the evidence in this report with community input, the City of Madison is creating targeted educational campaigns, ride share opportunities, and other public health and traffic safety initiatives to reduce impaired driving.

The report has data limitations:

- It underrepresents all impaired driving incidents in Madison because it only includes crashes.
- Alcohol type and blood alcohol content (BAC) data are missing. BAC is not tested in every crash.
- Aside from alcohol, the type(s) of drug(s) consumed prior to a crash is not reported.

Some of the graphs reflect data from January 1st-December 31<sup>st</sup> 2025, while other graphs reflect data from January 2022-January 2026.

The majority of impaired drivers in 2025 who crashed were under the influence of **alcohol only**.

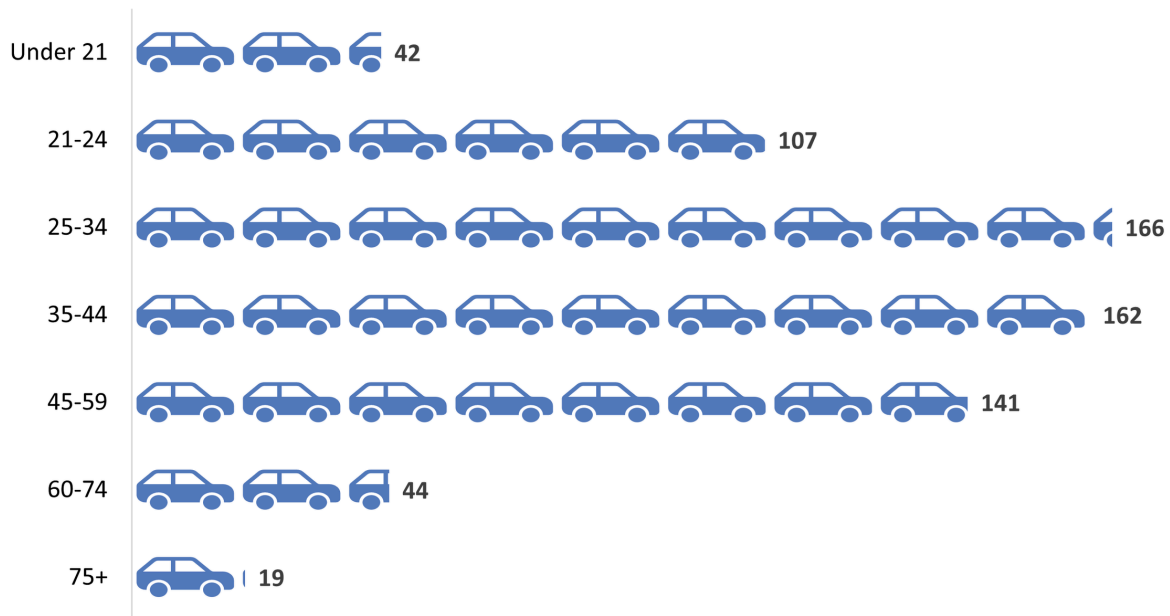


*DT4000 data indicates whether alcohol or drug use was a factor in a crash, based on the following criteria: a driver was suspected by law enforcement of alcohol or drug use, or a citation was issued. \*When the substance type is unknown, it means that an OWI citation was issued by law enforcement but there are no details about the types of substance(s) observed or tested for.*

Source: [Community Maps](#)

This report was created by The City of Madison’s Impaired Driving Reduction Coordinator in March 2026 using the advanced traffic search feature from the Wisconsin Traffic Operations and Safety (TOPS) Laboratory Community Maps Database.

## In 2025, people ages 25-44 had the highest rates of impaired drivers involved in crashes per 100,000 people.



*DT4000 data indicates whether alcohol or drug use was a factor in a crash, based on the following criteria: a driver was suspected by law enforcement of alcohol or drug use, or a citation was issued. Two duplicates were found in the reporting system and were removed from this dataset.*

## OUT OF IMPAIRED DRIVER CRASHES FROM 2025:

The youngest driver was: **17**

The oldest driver was: **83**

The median (“typical”) driver was: **34**

The most common driver age was: **28**

Source: [Community Maps](#)

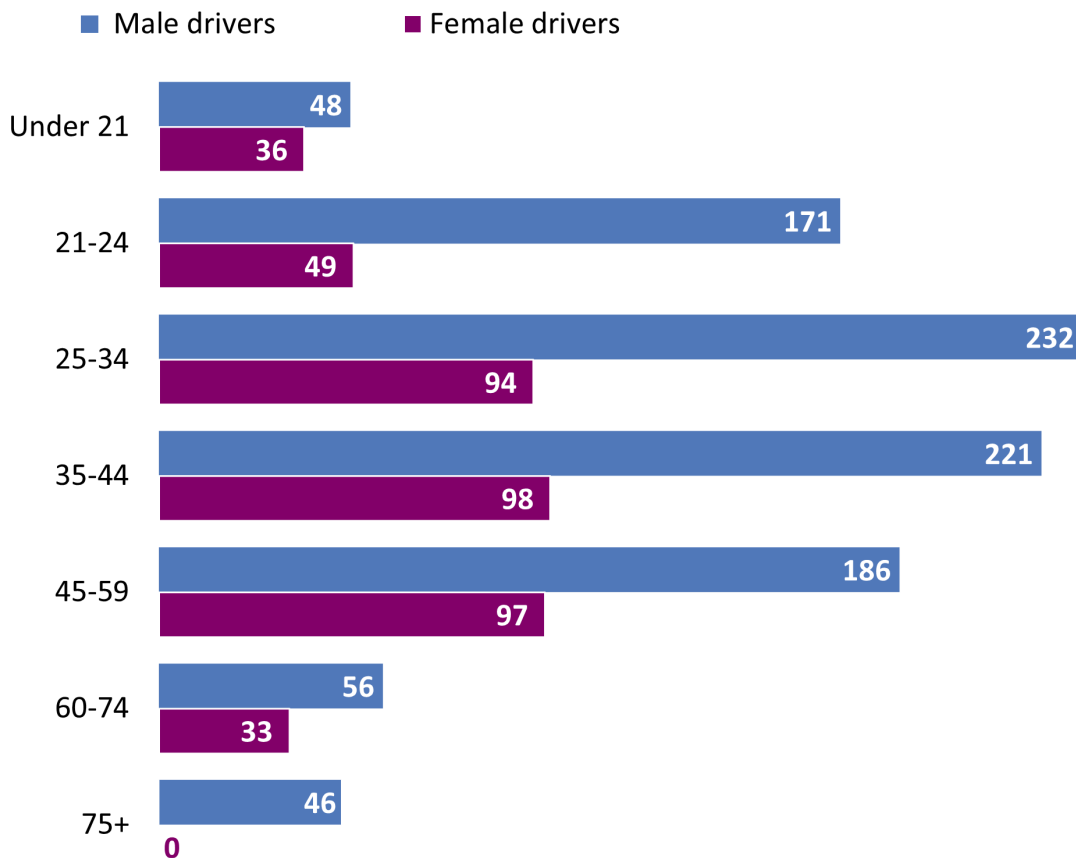
# In 2025, more than double the rate of impaired driving crashes per 100,000 involved male drivers compared to female drivers



DT4000 data indicates whether alcohol or drug use was a factor in a crash, based on the following criteria: a driver was suspected by law enforcement of alcohol or drug use, or a citation was issued. Two duplicates were found in the reporting system and were removed from this dataset.

Source: [Community Maps](#)

## Impaired Driving Crash Rates per 100,000 by Sex and Age in 2025

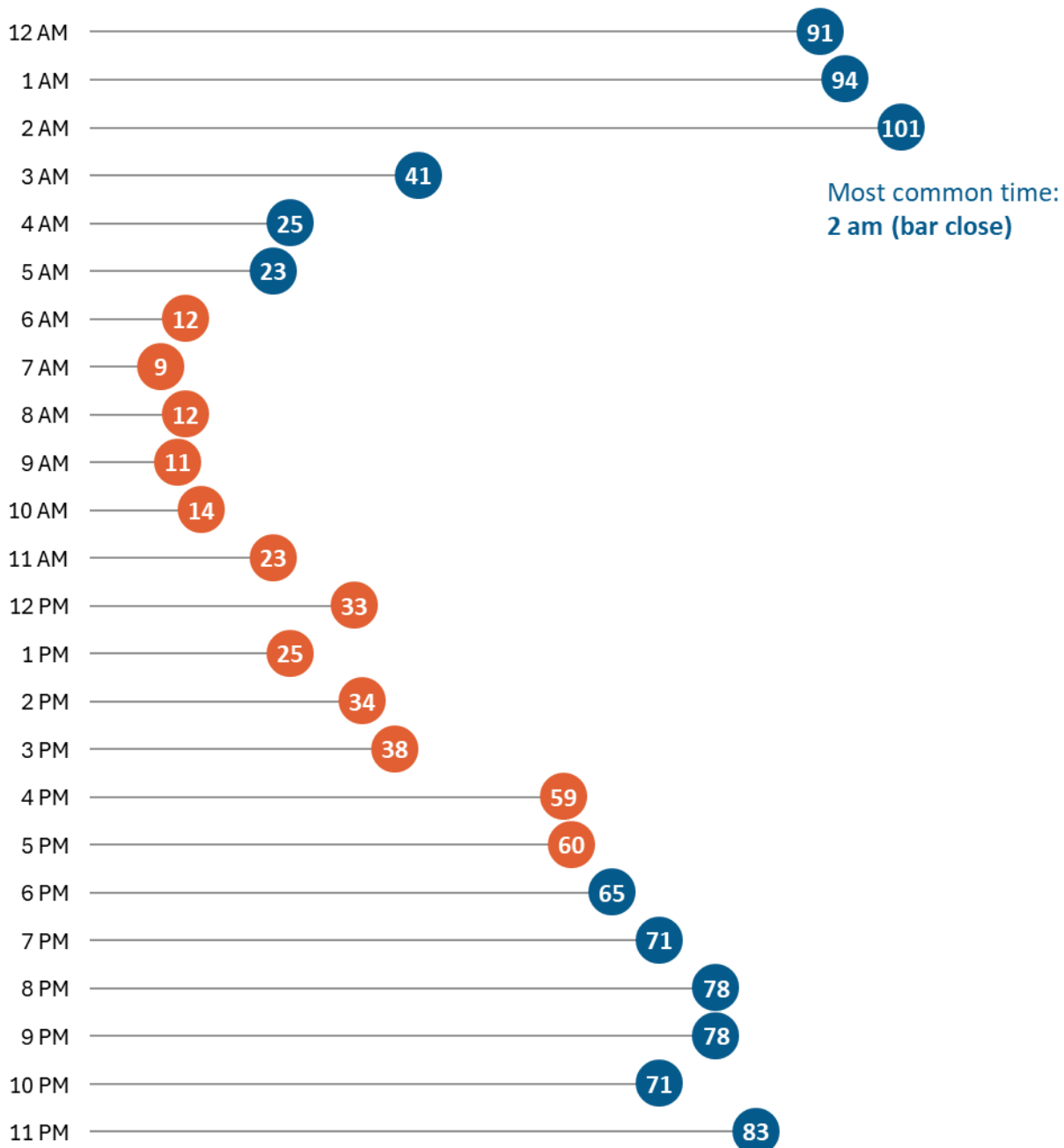


DT4000 data indicates whether alcohol or drug use was a factor in a crash, based on the following criteria: a driver was suspected by law enforcement of alcohol or drug use, or a citation was issued. Two duplicates were found in the reporting system and were removed from this dataset.

Source: [Community Maps](#)

# Impaired driving crashes are generally more common during **evening hours**.

Data from January 2022-2026

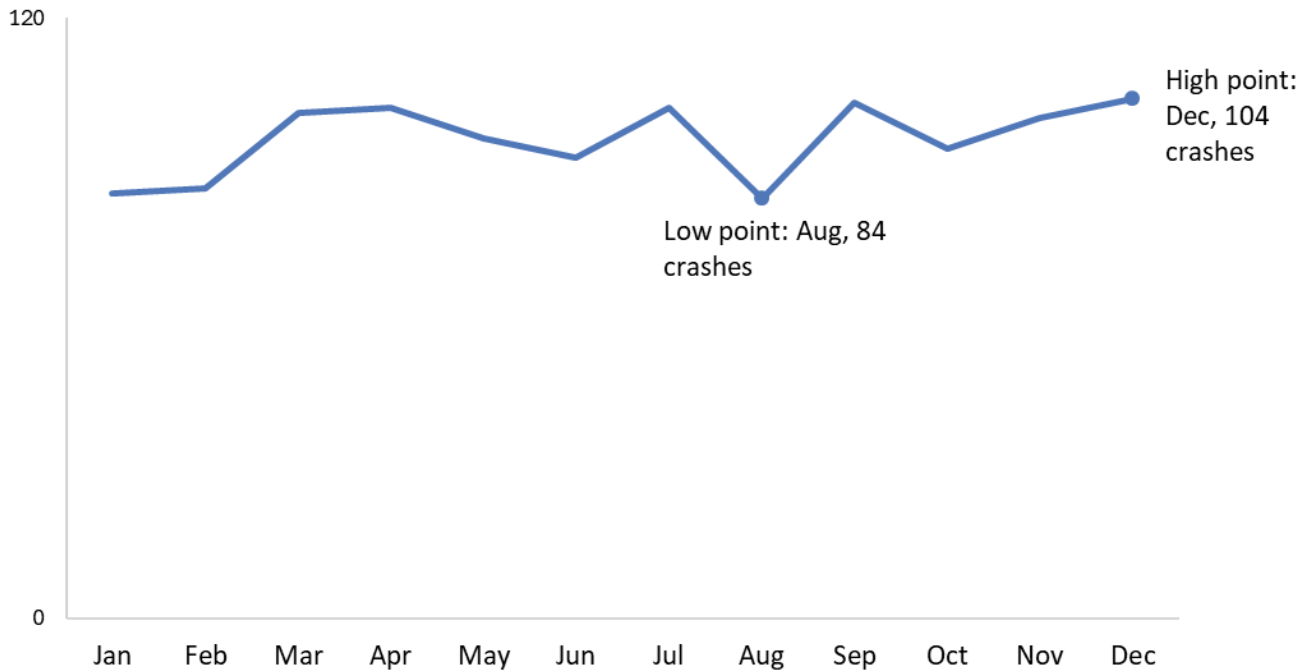


*DT4000 data indicates whether alcohol or drug use was a factor in a crash, based on the following criteria: a driver was suspected by law enforcement of alcohol or drug use, or a citation was issued.*

Source: [Community Maps](#)

# Impaired driving crashes happen at a similar rate from month to month.

Data from Jan 2022-2026



*DT4000 data indicates whether alcohol or drug use was a factor in a crash, based on the following criteria: a driver was suspected by law enforcement of alcohol or drug use, or a citation was issued.*

Source: [Community Maps](#)