



Perry St Connection Planning Study

Public Information Meeting
City of Madison Transportation Division
April 13th, 2026

Thank you for attending. We will begin shortly...



Presentation Overview

Thank You for participating!

- ▶ Welcome (Kristin Brodowsky, Public Information Officer, City of Madison)
- ▶ Presentation (Jose Navarro)
- ▶ Q&A (facilitated by Kristin Brodowsky)
 - Assisted by:
 - Aaron Canton, Engineer, City of Madison
 - Breana Collins, Planner, City of Madison
- ▶ Presentation will be available on the website following meeting:
 - <https://www.cityofmadison.com/transportation/initiatives/perry-street-connection-study>

Translated versions will be available at a later date.



Meeting Technical Housekeeping

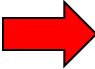
- **This meeting will be recorded** and posted to the project page
- Please keep **mic off** until after the presentation
- During the Q&A, use **“Raise Hand”** to ask a question
- **Chat can be used** for questions and comments



How to Participate

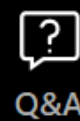
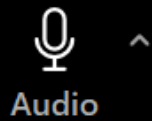
Choose one of the audio conference options

Phone call **Computer audio** Call Me

 **Join with computer audio**
Test speaker and microphone

Automatically join audio by computer when joining a webinar

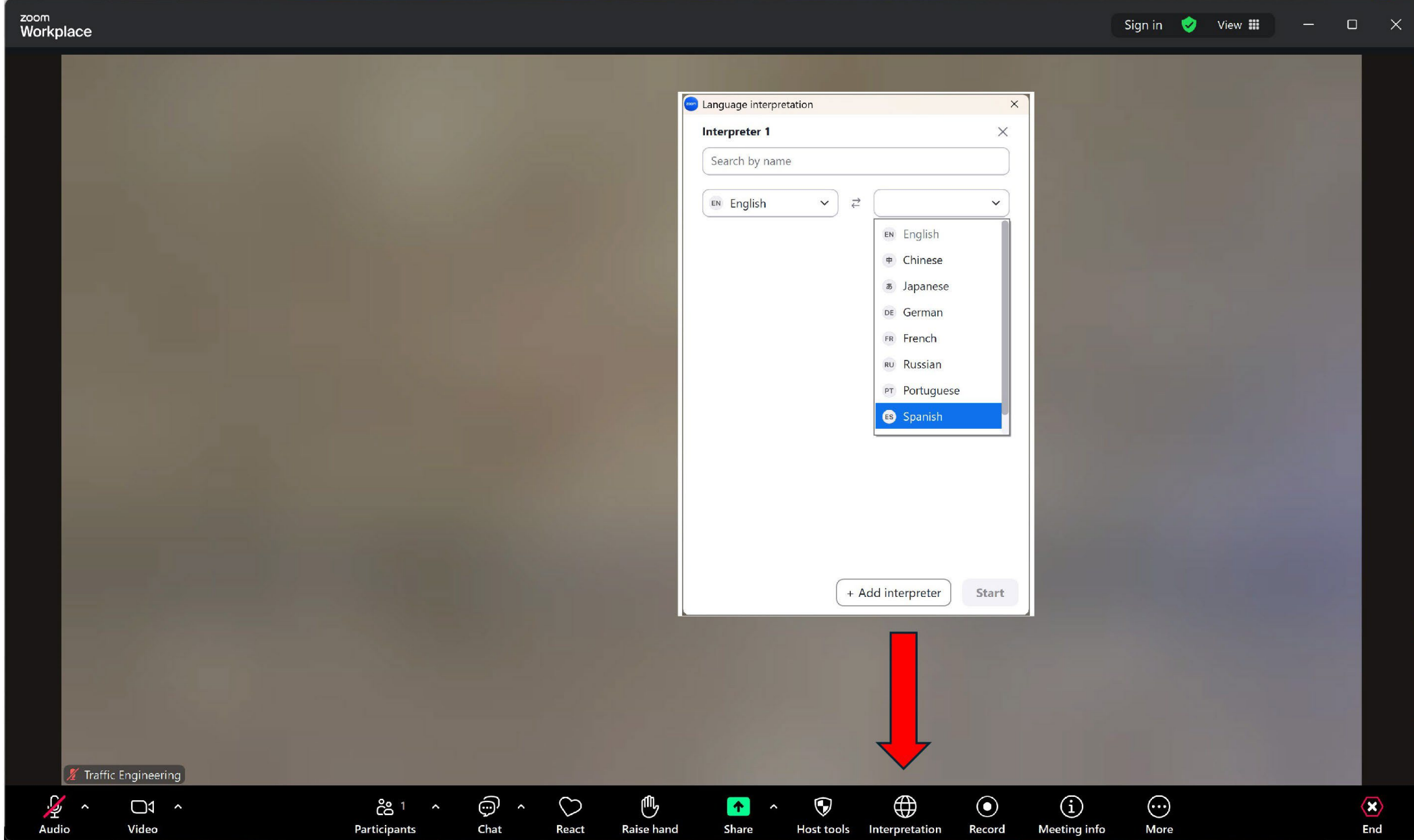
City of Madison



Make sure to join audio 



How to Participate



To choose a language
Para elegir un idioma



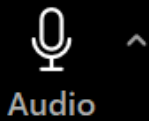
CITY OF MADISON





How to Participate

City of Madison



Audio

Raise hand

Q&A

Show captions

Leave

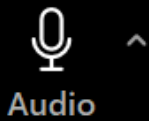
Raise your hand to be unmuted
For comments or ask additional questions.





How to Participate

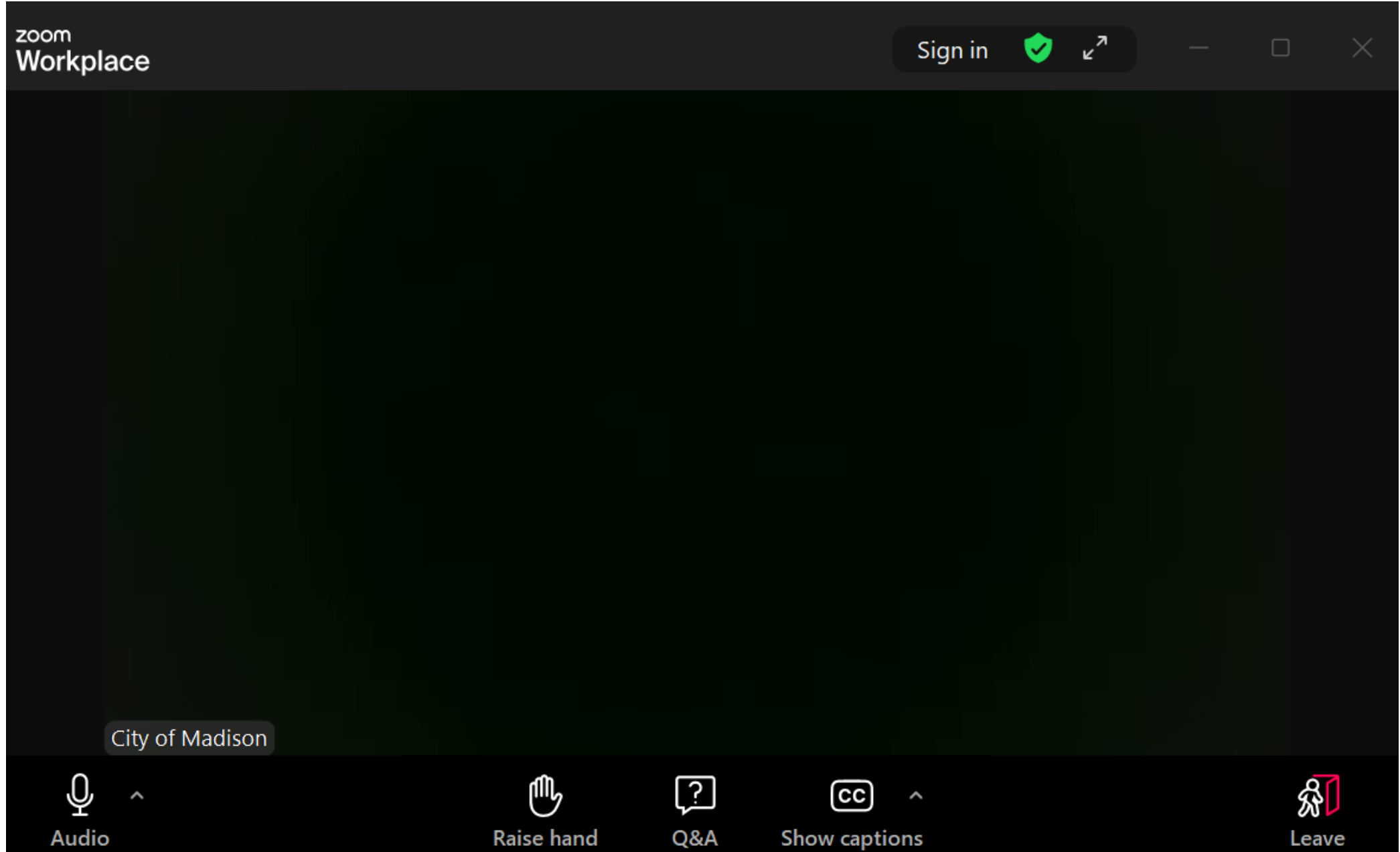
City of Madison



Use **Q&A button** if you have technical issues or a question for the panelists.



How to Participate



Use **Q&A button** for all other questions.
We will answer after the presentation.



CITY OF MADISON



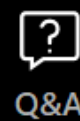
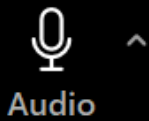


How to Participate

To leave the meeting, click leave.



City of Madison

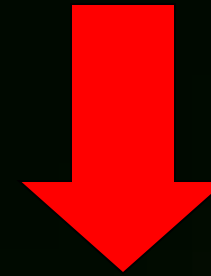




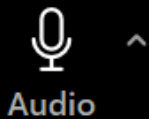
How to Participate

If you'd like to enable closed captioning, click "show closed captions" button on the bottom of the screen.

This may already be enabled. If this is not enabled, click the button to allow closed captioning.



City of Madison



Audio



Raise hand



Q&A



Show captions



Leave



This meeting is being recorded.

It is a public record subject to disclosure.

By continuing to be in the meeting, you are consenting to being recorded and consenting to this record being released to public record requestors.

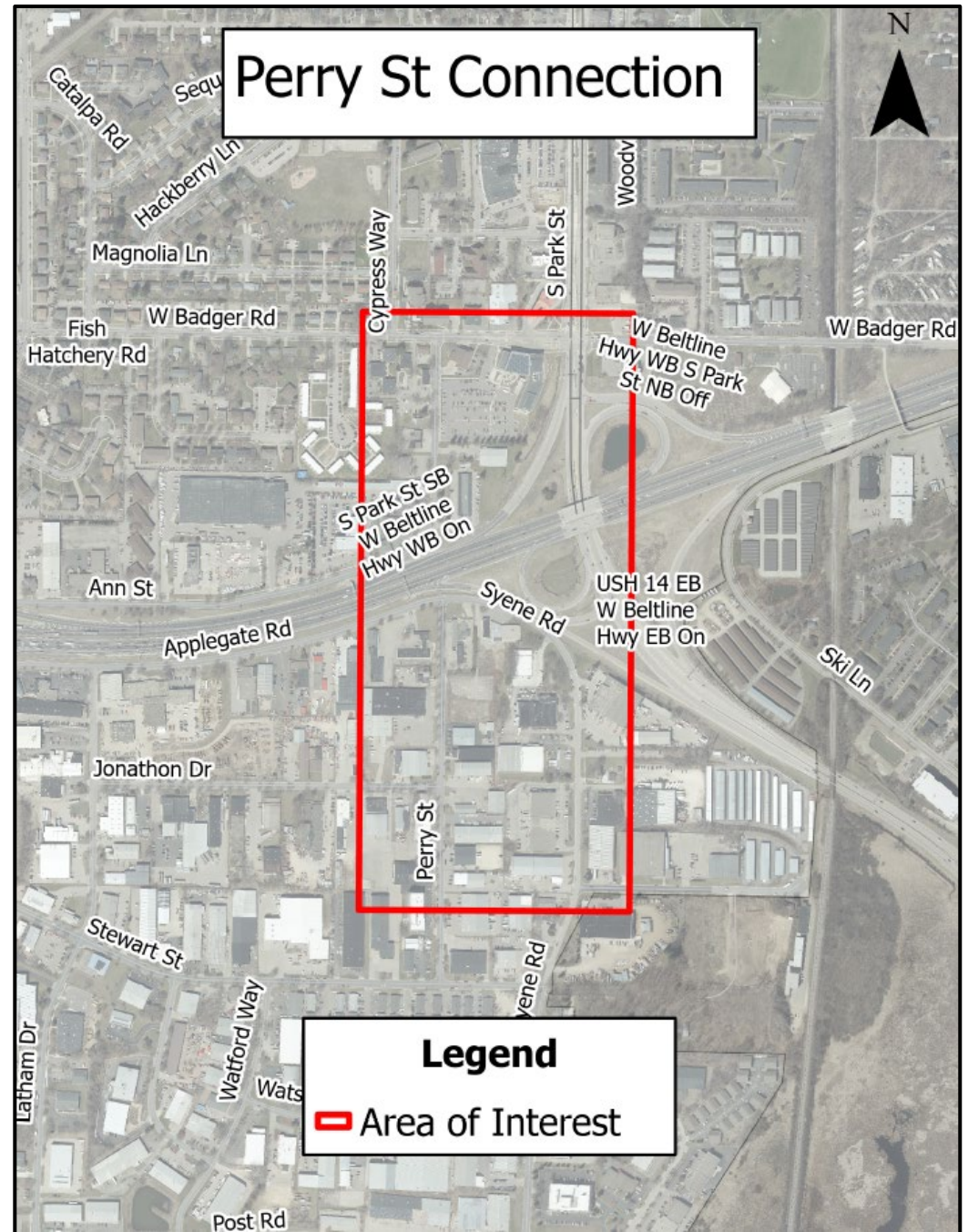


Perry St Connection Planning Study

Public Information Meeting
City of Madison Transportation Division
April 13th, 2026
6:00 PM

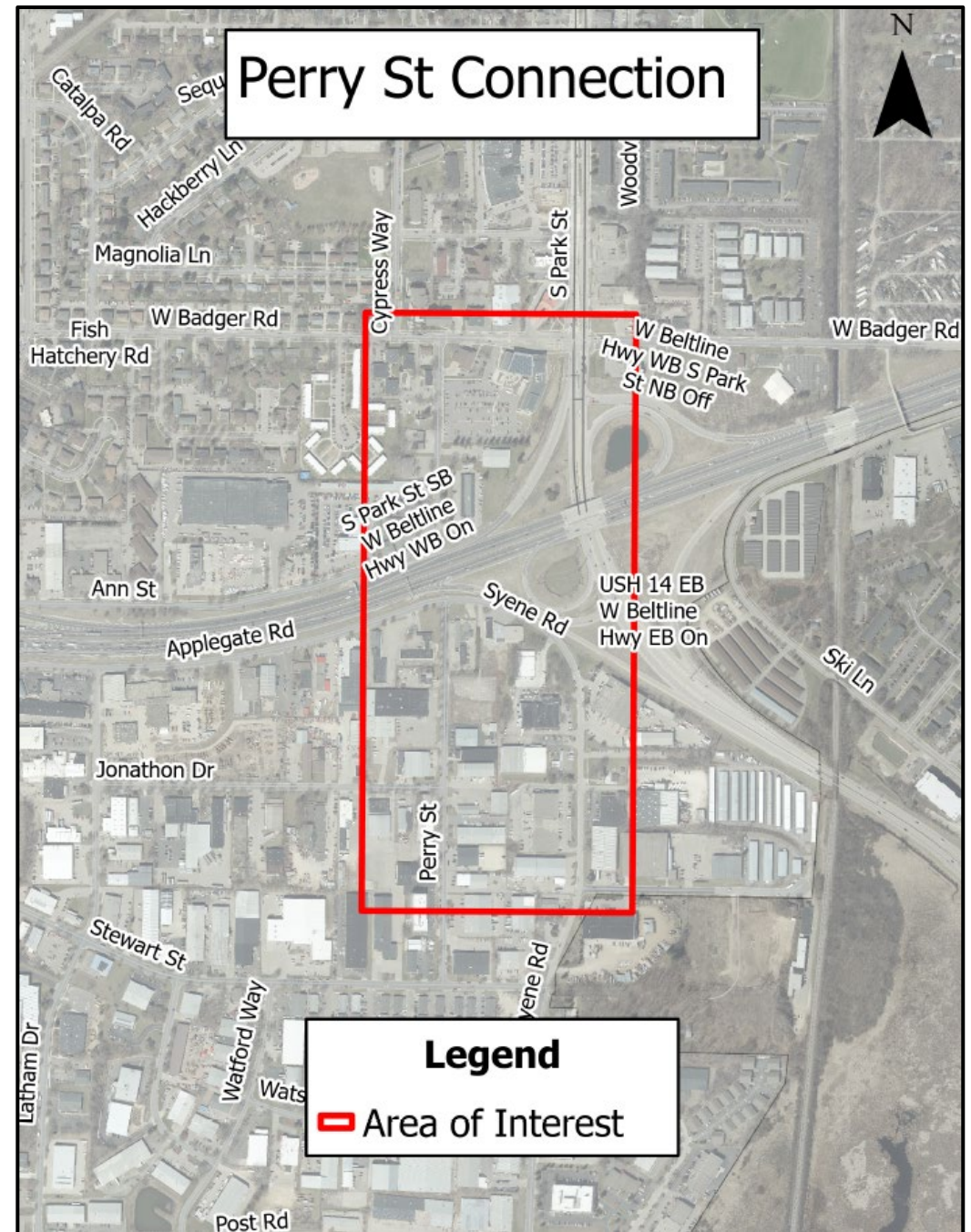


Area of interest location



Study Purpose

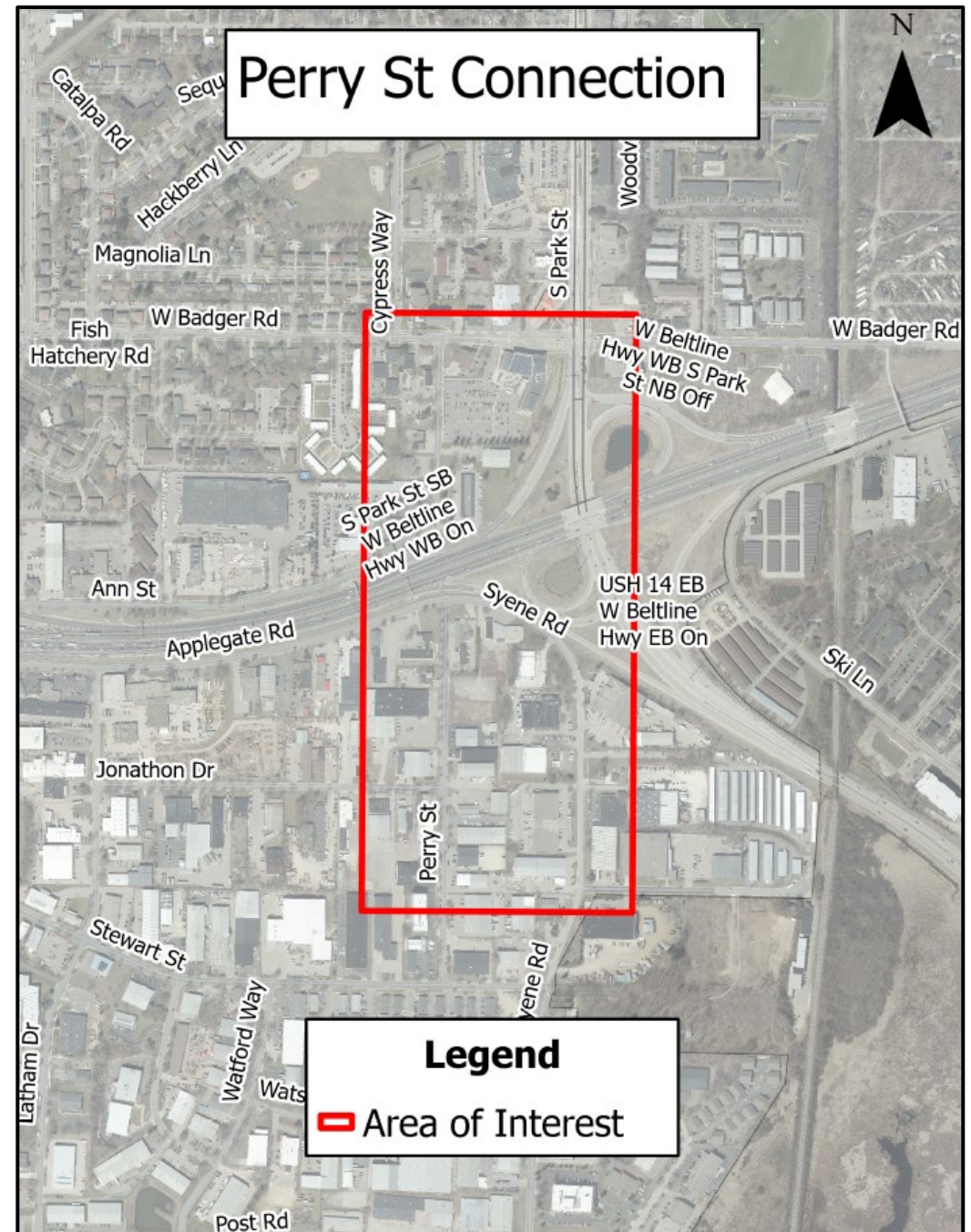
- ▶ Explore ways to better connect neighborhoods on the north and south of the Beltline (US 12/18)
- ▶ Improve travel for people going to homes, businesses, and other amenities making it safer and easier for multi-modal access
- ▶ This connection was identified in the 2022 South Madison Area Plan



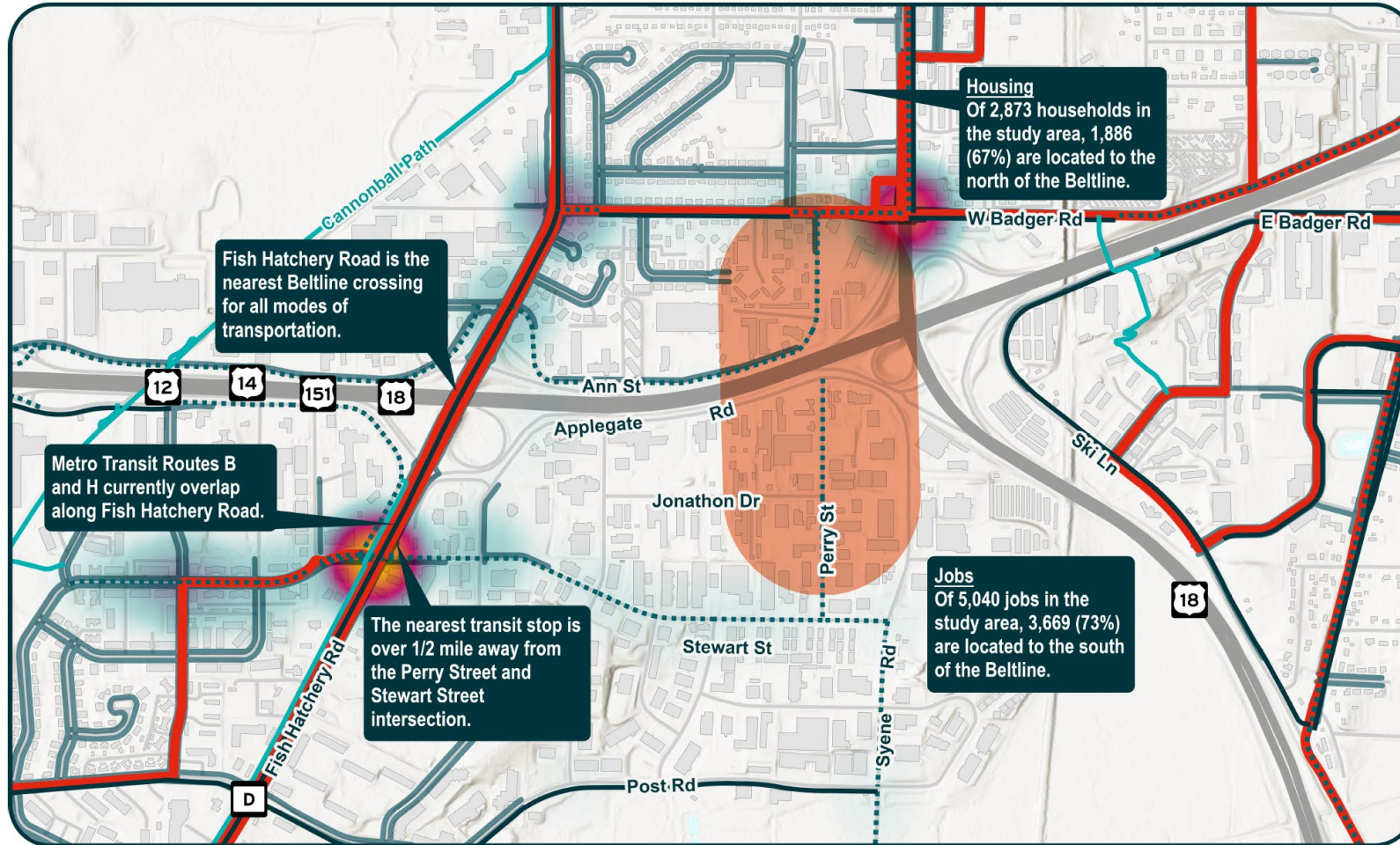
Overall Study Goals

► Overall Study Goals

- Finish the study by late summer 2026
- Understand the benefits and potential impacts related to Perry Street crossing options
- Create a report that summarizes the findings to inform future projects



Study Purpose



Legend

Bicycle Pedestrian Network

- Existing Shared-Use Path
- Existing Bike Facilities
- Existing Sidewalk
- Planned Bike Facilities

Metro Transit Route



Crash Density



Project Area



Purpose and Need

The purpose of the Perry Street Connection Study is to improve connections between neighborhoods to the north and south of the Beltline (US 12/18).

Connectivity and Access

The nearest Beltline crossing is half a mile west at Fish Hatchery Road. Park Street (US 151) crosses the beltline but does not have a direct connection to Perry Street.

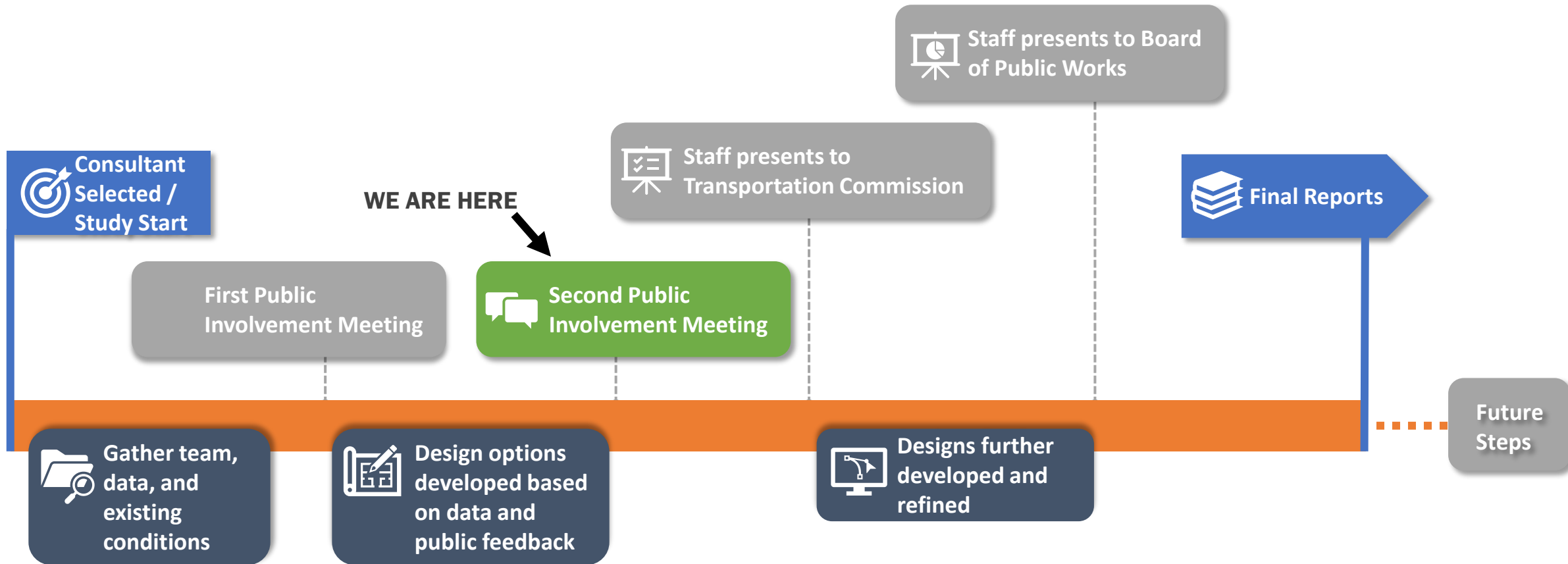
Social Demands

Reconnecting Perry Street is identified as a priority in the city of Madison's South Madison Neighborhood Plan and supported by the region's long-range transportation plan, Connect Greater Madison 2050.

Safety

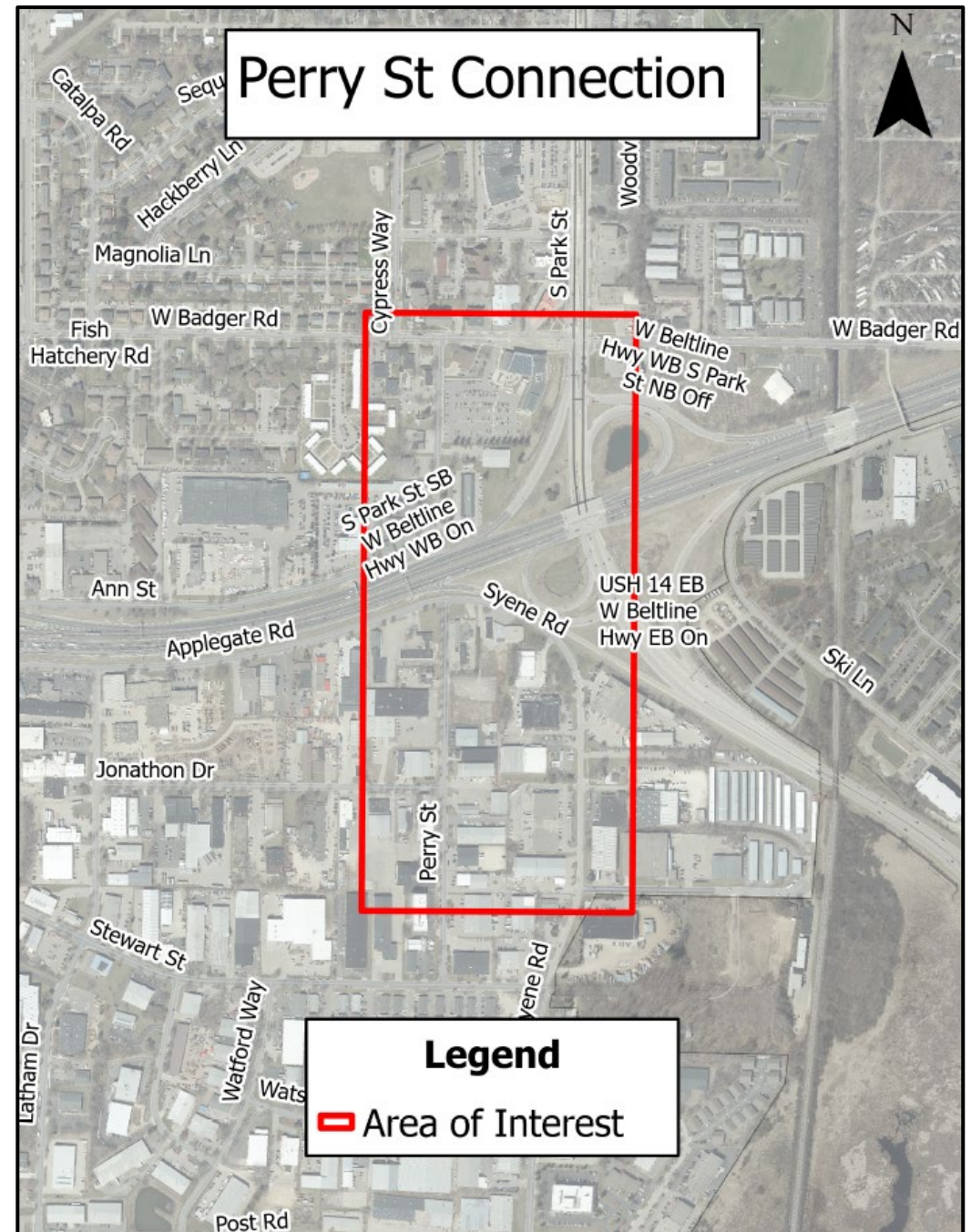
The project area lacks safe and direct infrastructure for non-motorized travel forcing travel onto nearby arterial roads, increasing the risk for vulnerable road users. The Fish Hatchery Road and Greenway Cross intersection and the S Park Street and W Badger Road intersections are crash hot spots.

Study Process



Meeting Purpose

- ▶ Share:
 - Different design options and feasibility
 - Data Collected
 - Community feedback
- ▶ Hear thoughts and feedback about the alternatives
- ▶ Understand your concerns about transportation in this area
- ▶ Remind you to fill out the survey



Public Feedback

Online Survey (October-November 2025)

70%

of respondents found it challenging to get to or from the Perry Street area when walking, bicycling or driving.

45%

of respondents support an option of an overpass with the modes of transportation being transit, vehicles, bicycling and foot travel (25% do not support)

63%

of respondents support an option of an overpass with the modes of transportation only being bicycling and foot travel (16% do not support)

40%

of respondents do not support an option of an underpass with the modes of transportation being transit, vehicles, bicycling and foot travel (35% support)

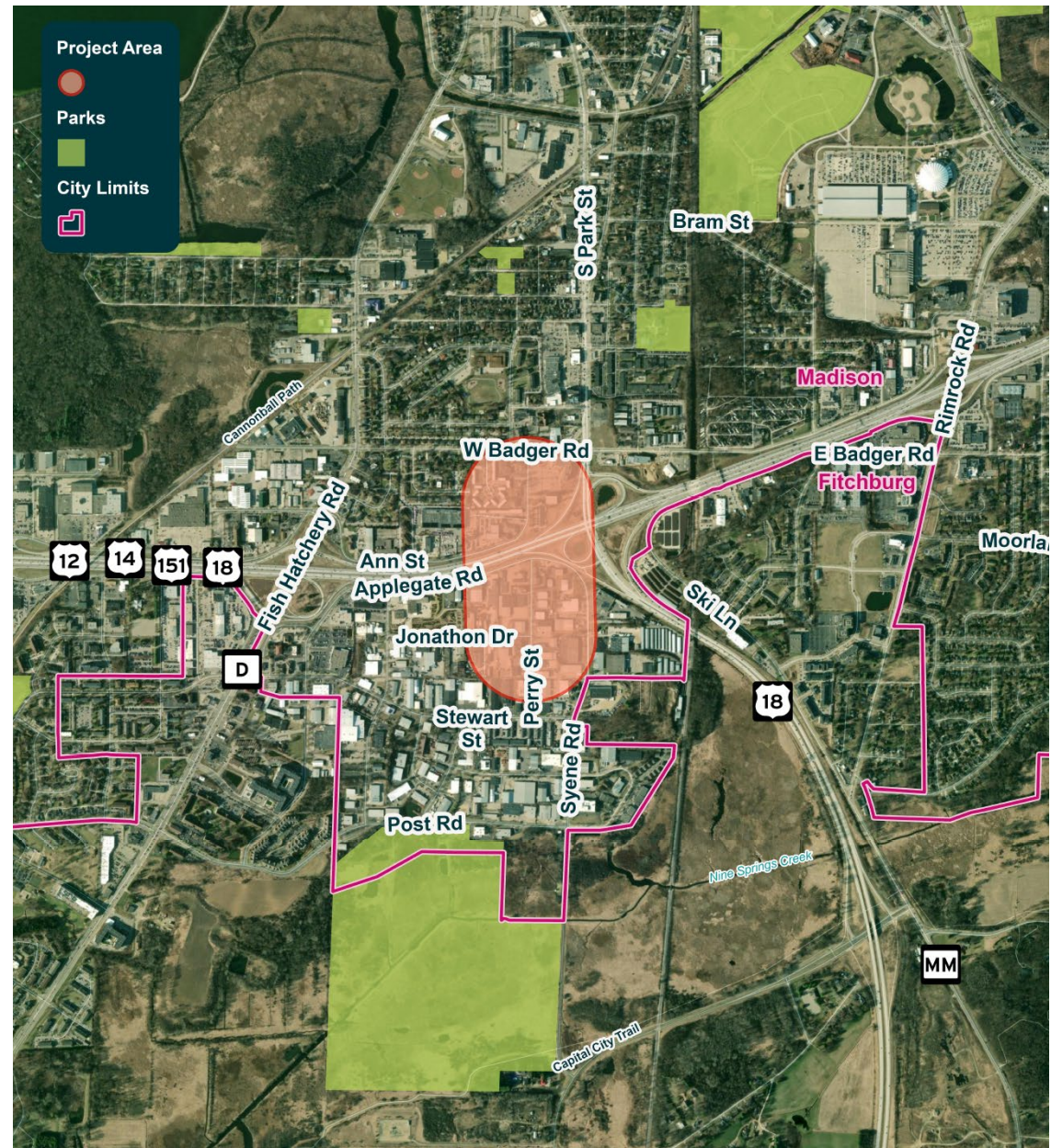
Community Meetings (November 2025-January 2026)

- Organizations mentioned that residents/patients/people they serve rely on the bus and do not ride bicycles.
- Organizations expressed concern about increased traffic at the intersection of Perry Street and Badger Road



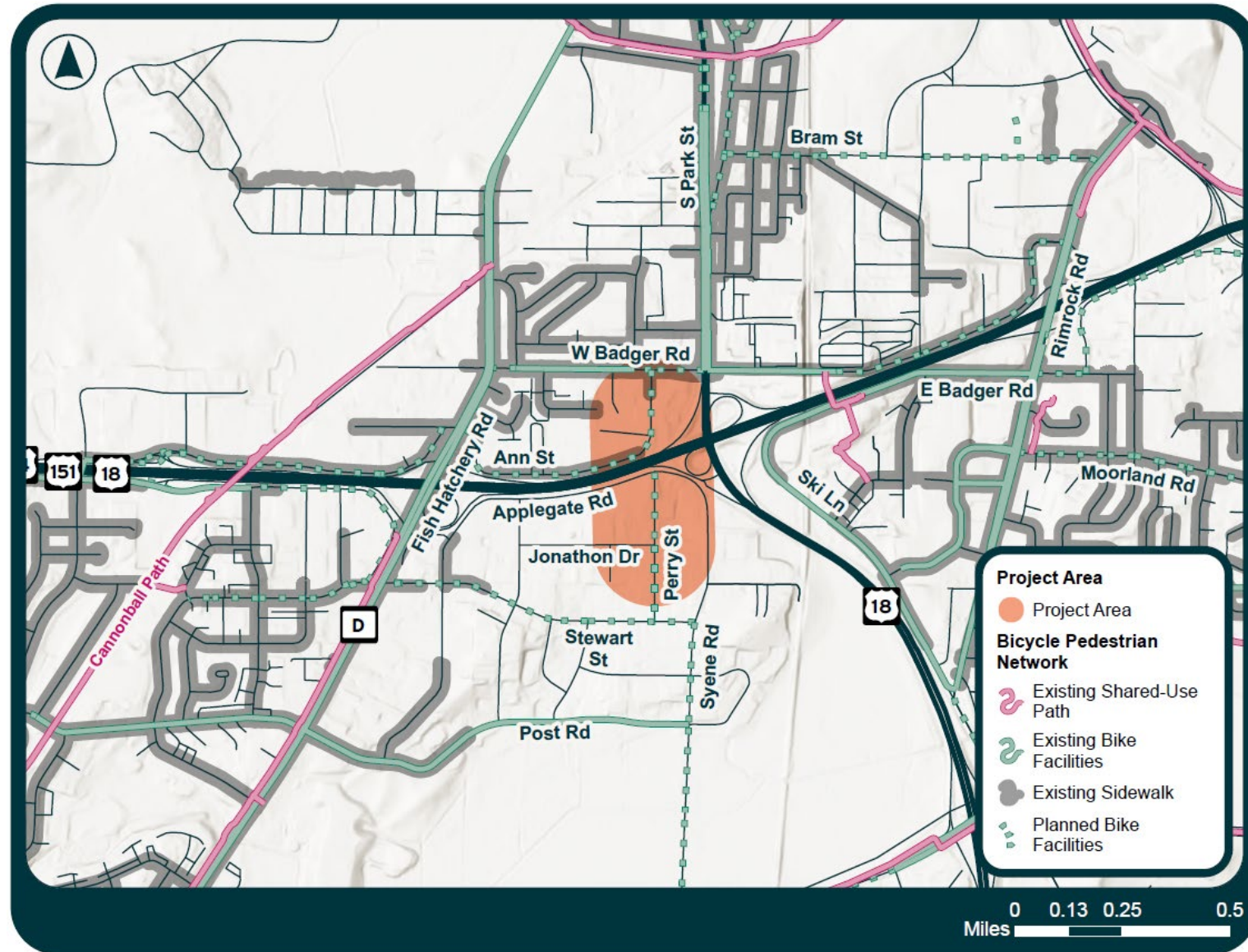
Public Feedback

- ▶ Stakeholders around the area also mentioned:
 - ▶ An all-modes alternative would benefit many in the area
 - ▶ Daycare center at Madison College
 - ▶ New Apartments at Perry and W Badger



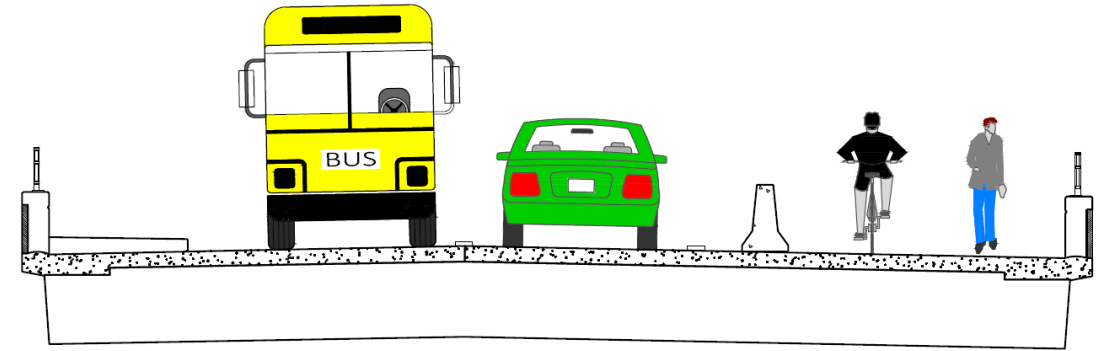
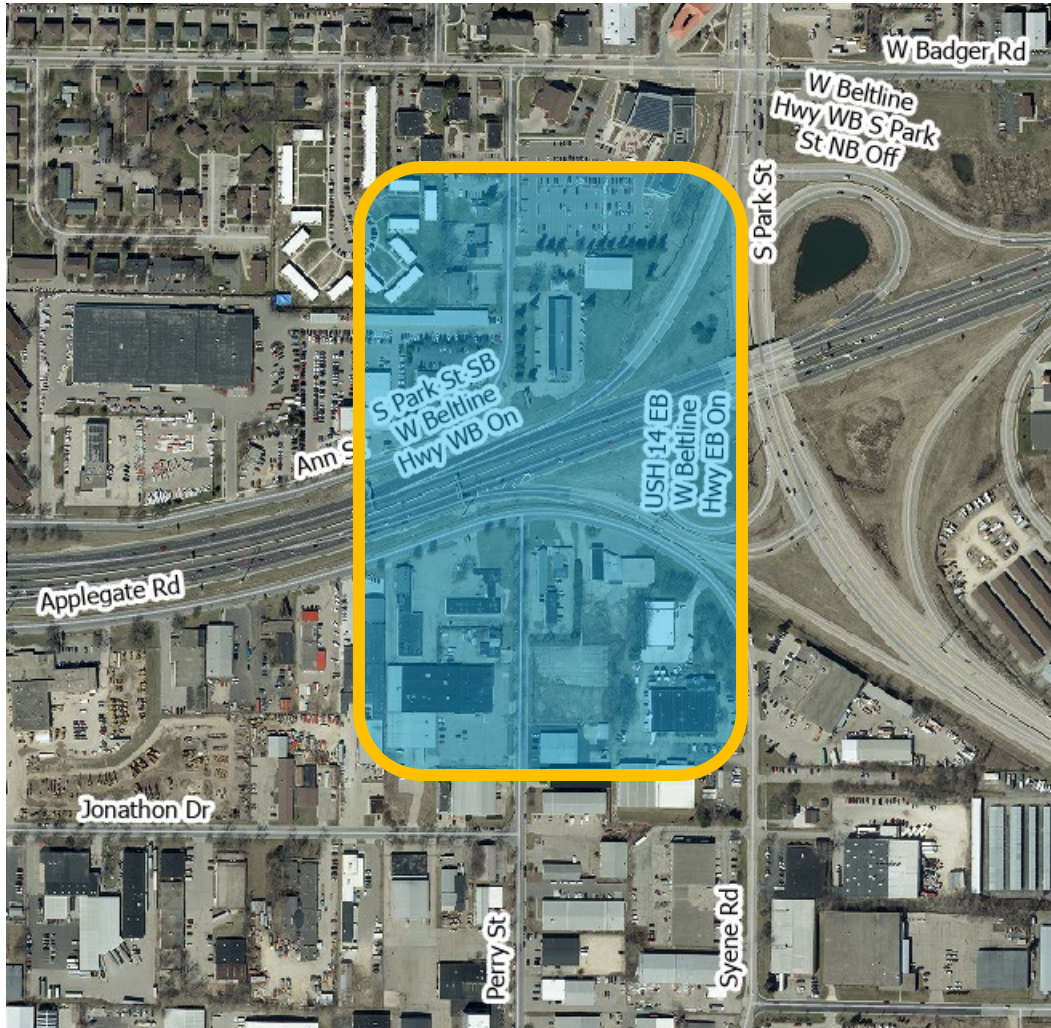
Other Considerations

- Connection could expand the Bicycle and Pedestrian Network helping the overall city's goal of all ages and abilities
- Users would have the option to not travel through W Badger Rd and Fish Hatchery Rd to access the southern area



Preliminary Alternatives – Overpass

- ▶ An overpass option would provide multi-modal transportation options

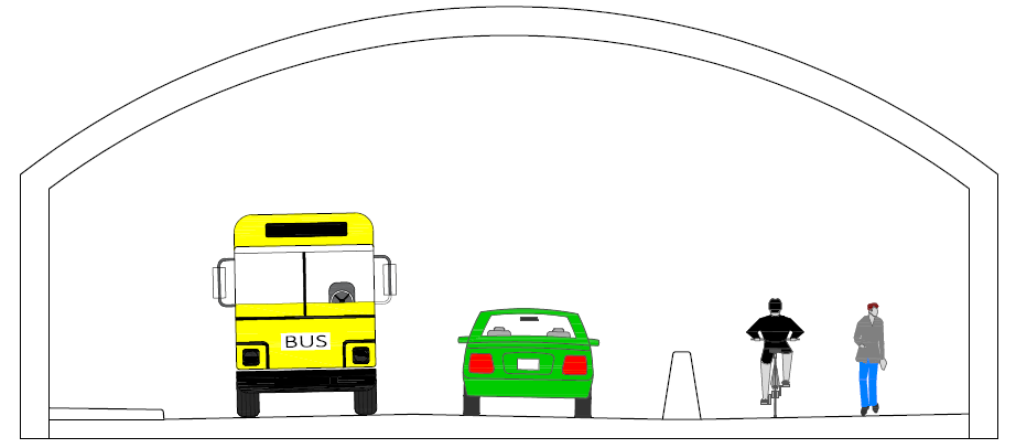
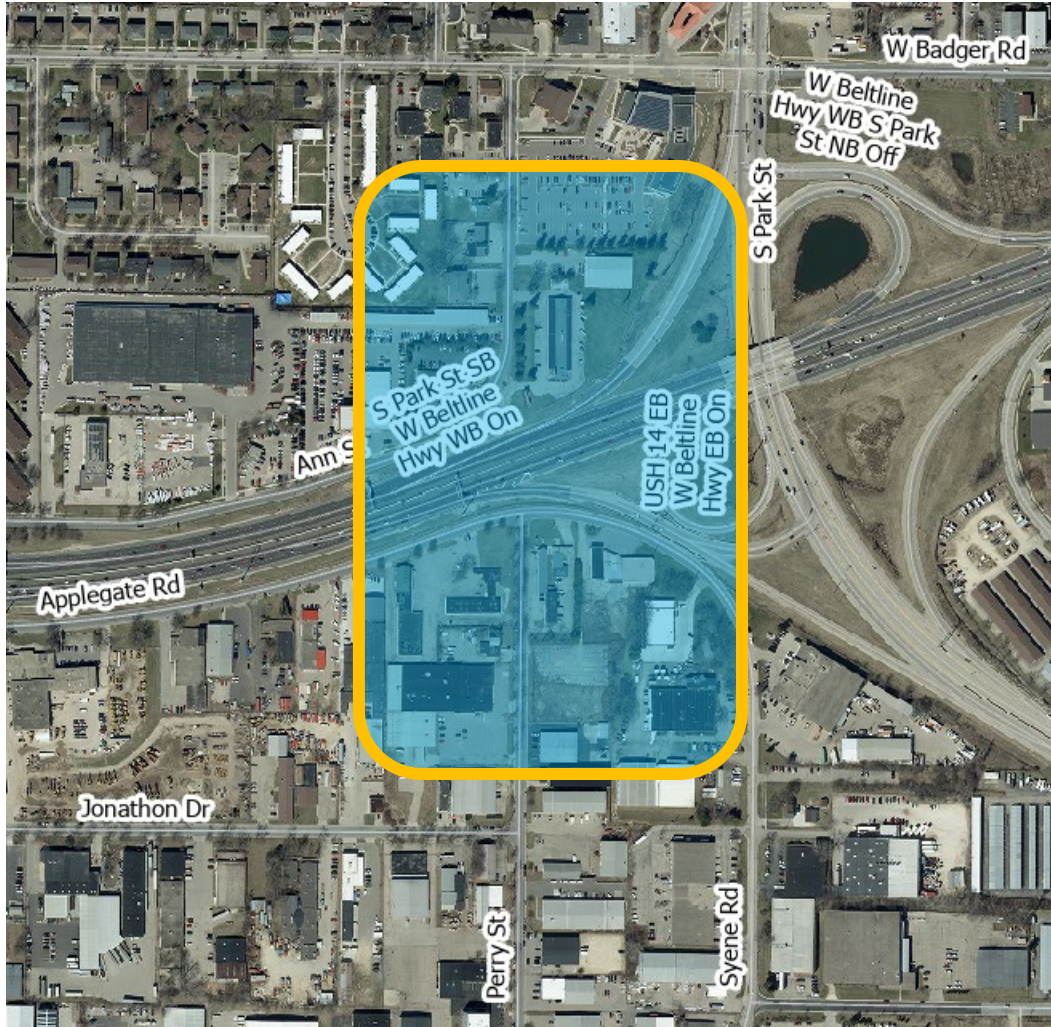


Roadway with Shared Use Path and Sidewalk
(Looking North)



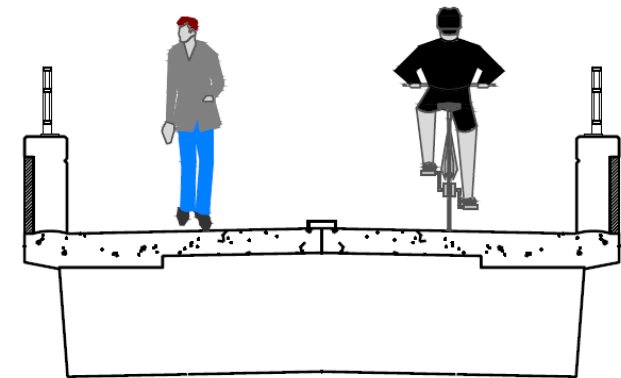
Preliminary Alternatives – Underpass

- ▶ An underground tunnel could also be an alternative



Preliminary Alternatives – Pedestrian/Bicycle Only

- ▶ A Pedestrian/Bicycle only bridge

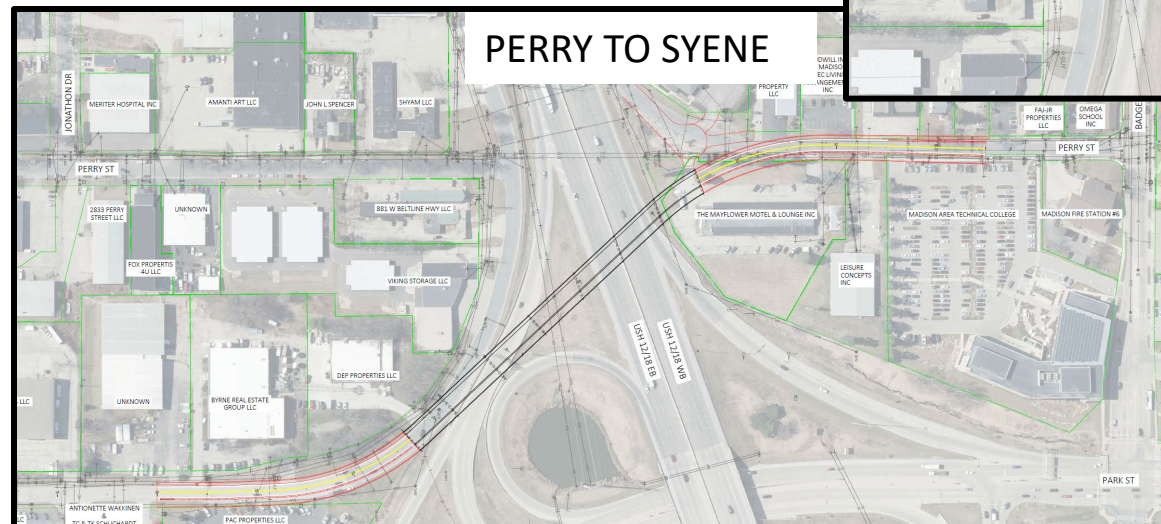
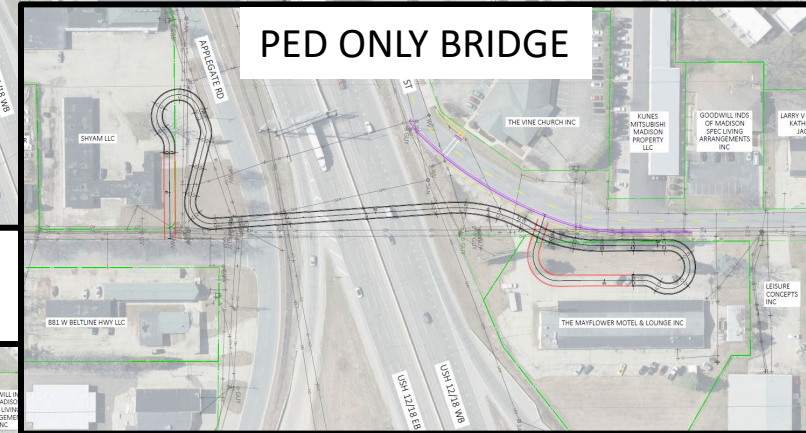
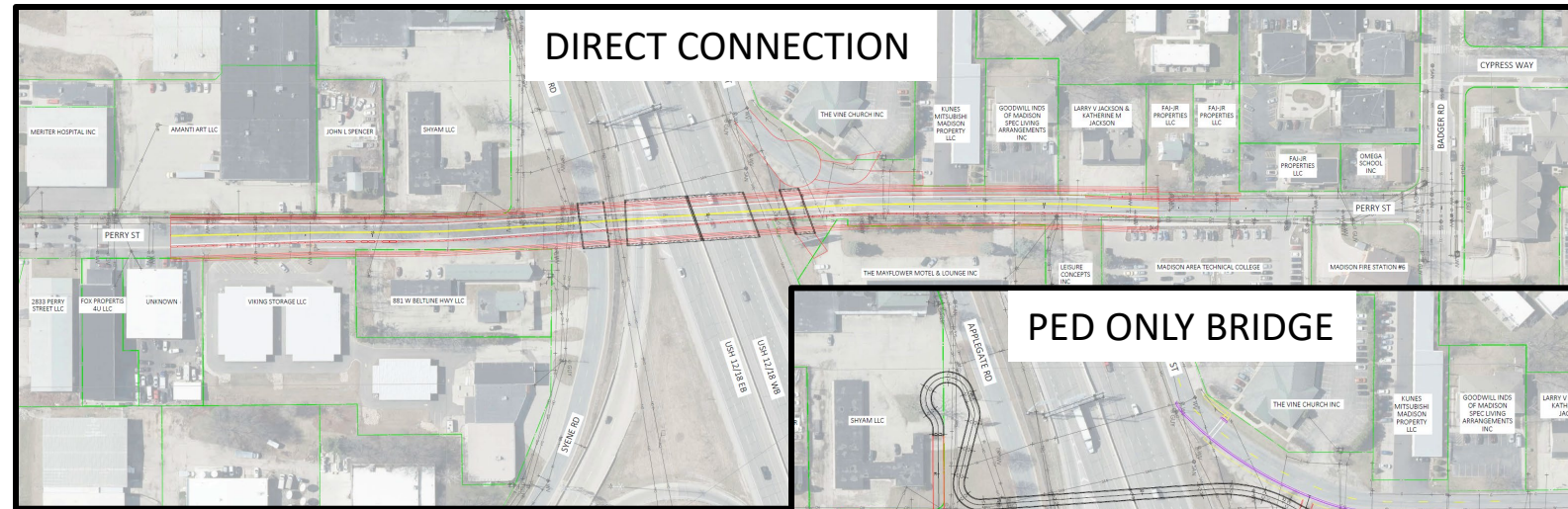


CITY OF MADISON



Initial Options Studied

- ▶ Established a foundation for the study
- ▶ Used to evaluate potential impacts
- ▶ Impacts included, space needs and access to properties
- ▶ High-level estimated costs for tunnel



Refining Alternatives

- ▶ We looked at several possible concepts to address the project needs.
- ▶ Each option was reviewed at a high level to see how well it met those needs.
- ▶ The most promising options—those that best met the goals while limiting impacts to surrounding areas—were carried forward for further study.

Pros and Cons: Straight Multimodal Bridge

NOT CARRIED FORWARD

PROS	CONS
Provides a multi-modal north-south crossing at Perry Street	May change driveway access at 11 properties
Improves emergency access	Requires 2 property acquisitions
	Cuts off access to Applegate Rd & Ann St
	Alters the visual character of the area
	Potential conflicts with overhead transmission lines



Pros and Cons: Straight Multimodal Tunnel

NOT CARRIED FORWARD

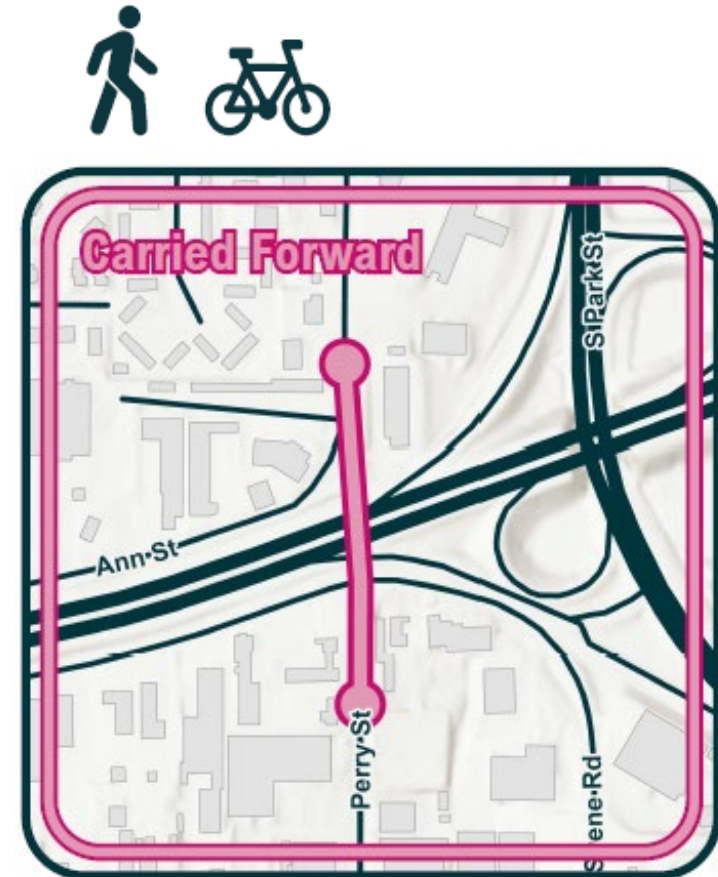
PROS	CONS
Provides a multi-modal north-south crossing at Perry Street	May change driveway access at several properties
Improves emergency access	May require several property acquisitions
Maintains the visual character of the area	Cuts off all access to Applegate Rd & Ann St
	Results in largest project footprint
	Likely to generate the greatest impacts on surrounding area



Pros and Cons: Straight Pedestrian/Bike Bridge

CARRIED FORWARD

PROS	CONS
Grade separated bike and pedestrian crossing	Requires 2 property acquisitions
Maintains access to Applegate Rd and Ann St	Potential visual impacts on Beltline signage and billboards
Results in the smallest project footprint	Potential conflict with overhead transmission lines
Minimal impacts on surrounding area	Does not connect all modes of transportation



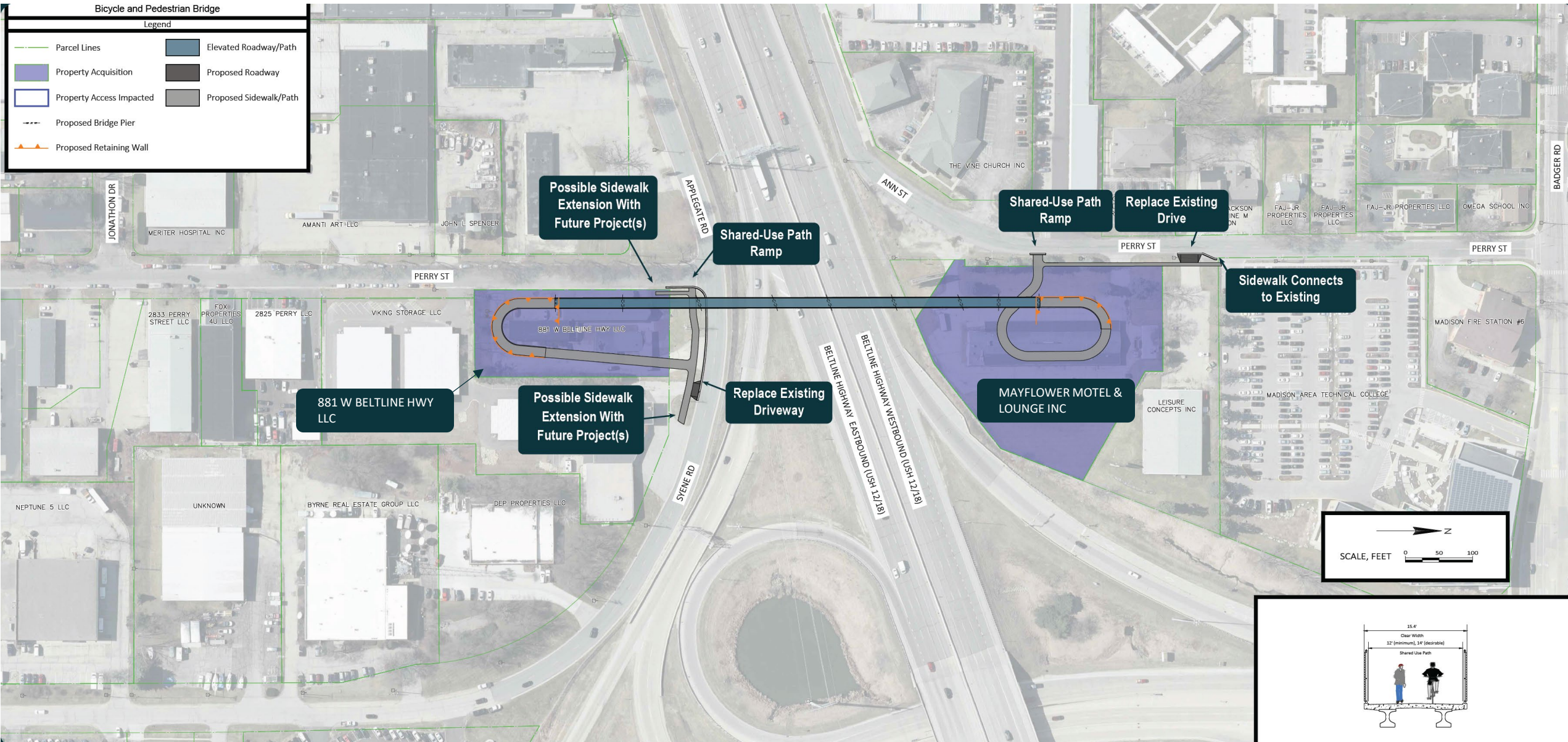
Pros and Cons: Angled Multimodal Bridge

CARRIED FORWARD

PROS	CONS
Provides a multi-modal north-south crossing near Perry Street	May change driveway access at 11 properties
Will have fewer access impacts to businesses compared to other options	Requires 1 property acquisition
Improves emergency access	Alters the visual character of the area
Provides better transportation network continuity	Potential conflicts with overhead transmission lines



Carried Forward – Straight Pedestrian/Bicycle Bridge

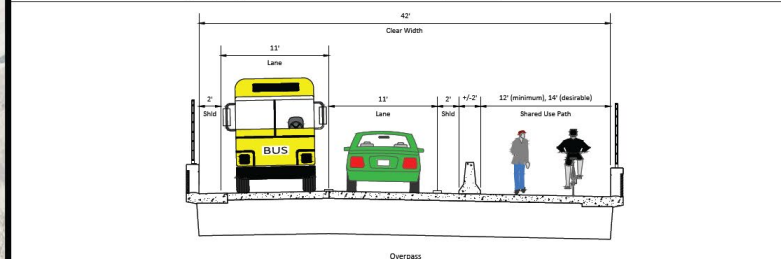
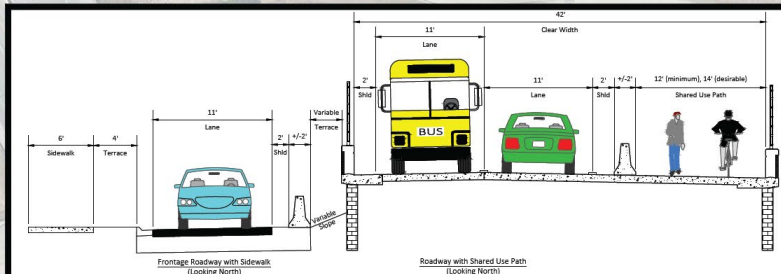
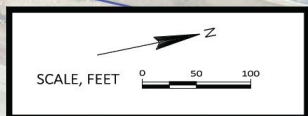
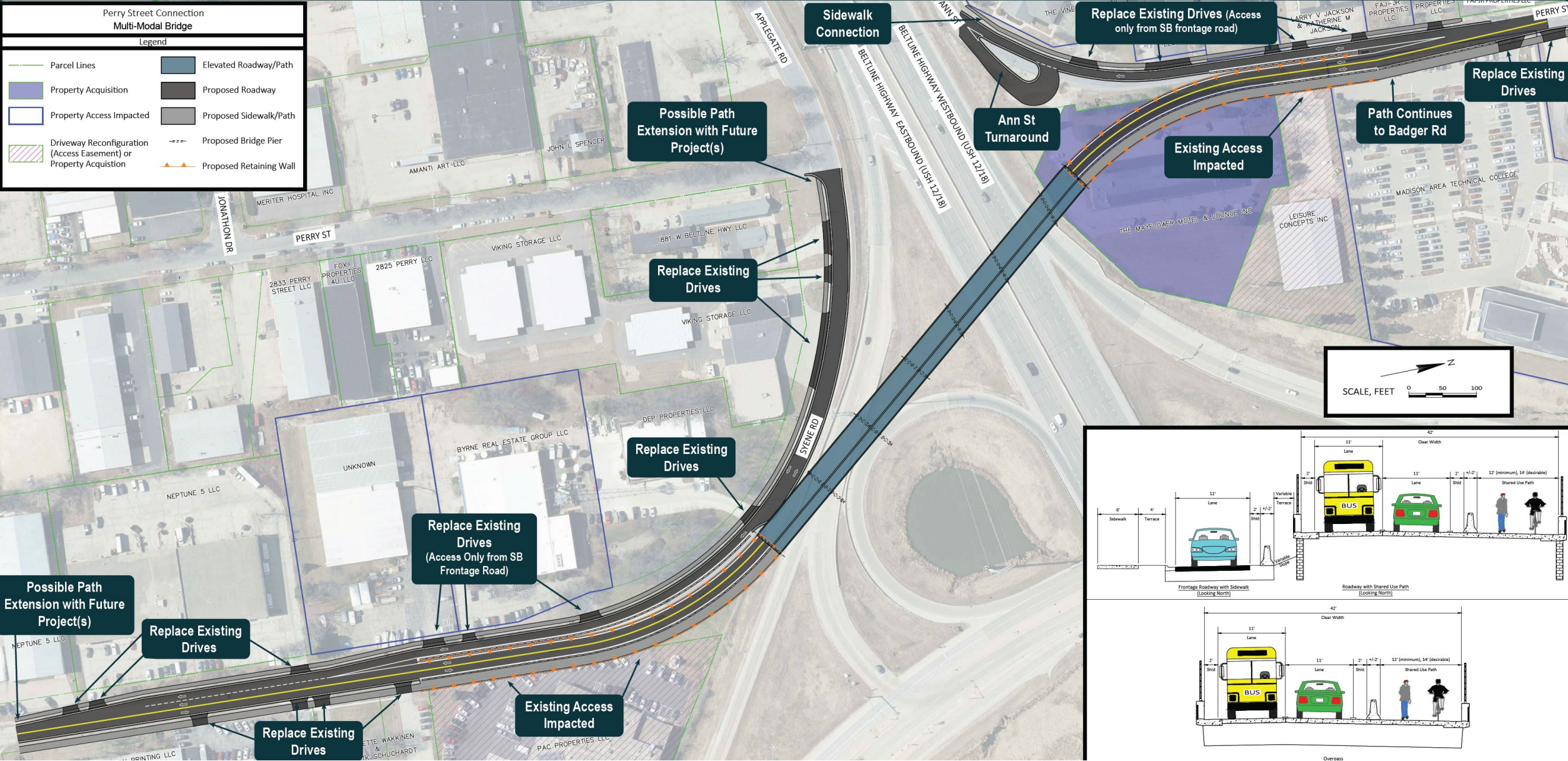


Carried Forward – Multimodal Syene Rd Connection

Perry Street Connection Multi-Modal Bridge

Legend

- Parcel Lines
- Property Acquisition
- Property Access Impacted
- Driveway Reconfiguration (Access Easement) or Property Acquisition
- Elevated Roadway/Path
- Proposed Roadway
- Proposed Sidewalk/Path
- Proposed Bridge Pier
- Proposed Retaining Wall



Next Steps

- ▶ Collect feedback / Survey end
 - ▶ Survey to end **April 27th, 5pm**
- ▶ Further refinement of alternatives will start in early May
- ▶ Recommended alternatives to Transportation Commission for comment
 - ▶ May 15th (Tentative)
- ▶ Recommended alternatives to Board of Public Works for comments
 - ▶ June (Tentative)
- ▶ Common Council review Alternatives Report
 - ▶ July (Tentative)

Contact Information & Resources

- **City of Madison**

- Engineer, Jose Navarro, (608) 267-1148, jnavarro@cityofmadison.com
- Engineer, Aaron Canton, (608)242-4763, acanton@cityofmadison.com
- Planner, Breana Collins, (608) 243-0179, bcollins@cityofmadison.com
- Public Information Officer, Kristin Brodowsky, (608) 264-9272, kbrodowsky@cityofmadison.com

- **Project Website:**

- <https://www.cityofmadison.com/transportation/initiatives/perry-street-connection-study>
- Sign-up for project email updates on the website
 - Updates on work progress will be posted to the project website
 - Recording of this presentation will be posted on the project website