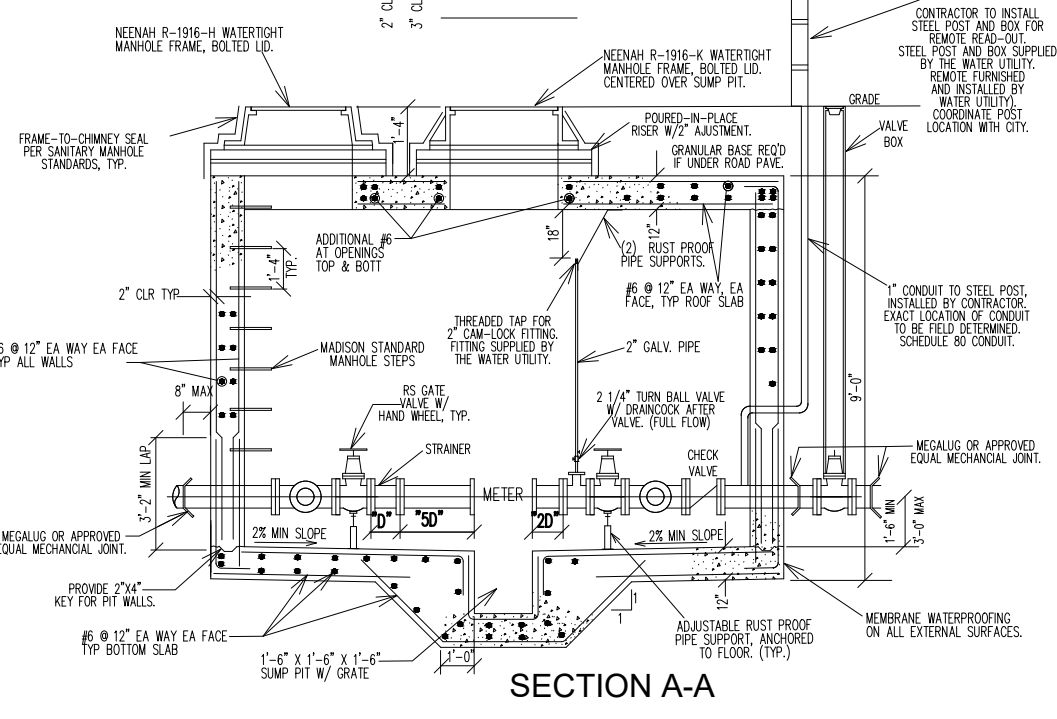
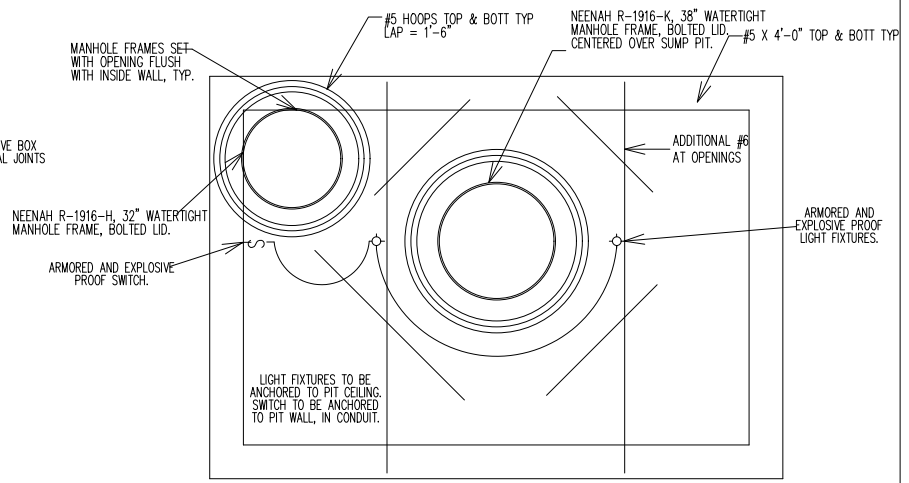


PLAN



SECTION A-A



METER PIT ROOF/LIGHT DETAIL

**ADDITIONAL REQUIREMENTS:**

- CONTRACTOR TO FURNISH MANUFACTURER APPROVED NSF-61 FLANGES W/ BOLTS & GASKETS
- NO INSULATION OR COVERING WILL BE PERMITTED ON METERS OR FLANGES
- TEST CONNECTION MUST BE PIPED SEPARATE FROM METER
- METER AND ASSOCIATED VALVES SHALL BE LOCATED IN THE SAME ROOM AS THE WATER SERVICE FIRST ENTERS THE BUILDING
- ELECTRICAL BONDING SHALL BE LOCATED SO AS NOT TO RESTRICT REMOVAL OF METER FLANGE BOLTS.
- ALL METERS SHALL BE LOCATED THAT THEY SHALL BE PROTECTED FROM OBSTRUCTIONS AND PERMIT READY ACCESS FOR READING, INSPECTION, AND SERVICING, SUCH LOCATION TO BE DESIGNATED OR APPROVED BY THE WATER UTILITY.
- ALL PENETRATIONS INTO VAULT SHALL BE WATERPROOF
- CONTRACTOR TO FURNISH AND INSTALL SUMP PUMP W/ FLOAT THAT DISCHARGES INTO STORM SEWER
- PRECAST STRUCTURES MUST BE APPROVED AS REQUIRED BY ENGINEER
- MUST INSTALL 1-IN MINIMUM CONDUIT RACEWAY
- ALL VALVES ARE THE RESPONSIBILITY OF THE PROPERTY OWNER, AND MUST BE IN GOOD WORKING ORDER.

CITY OF MADISON  
WATER UTILITY

NOT TO SCALE

WATER METER PIT CONSTRUCTION