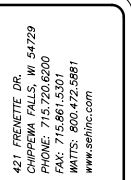


6-24-2014 1:02 PM  
PLOT: 6-24-2014 1:02 PM  
PLOT SCALE: 1/2"  
421 FRENETE DR. CHEPESWAUKEE, WI 54729  
PH: 715.861.5500 FAX: 715.861.5501  
WWW: 800.472.5981 www.sehinc.com



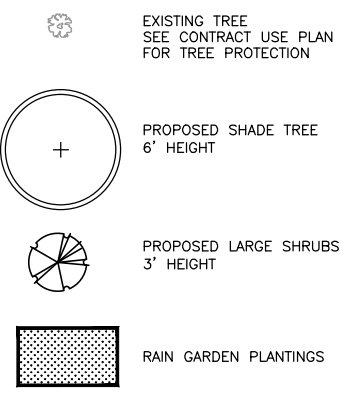
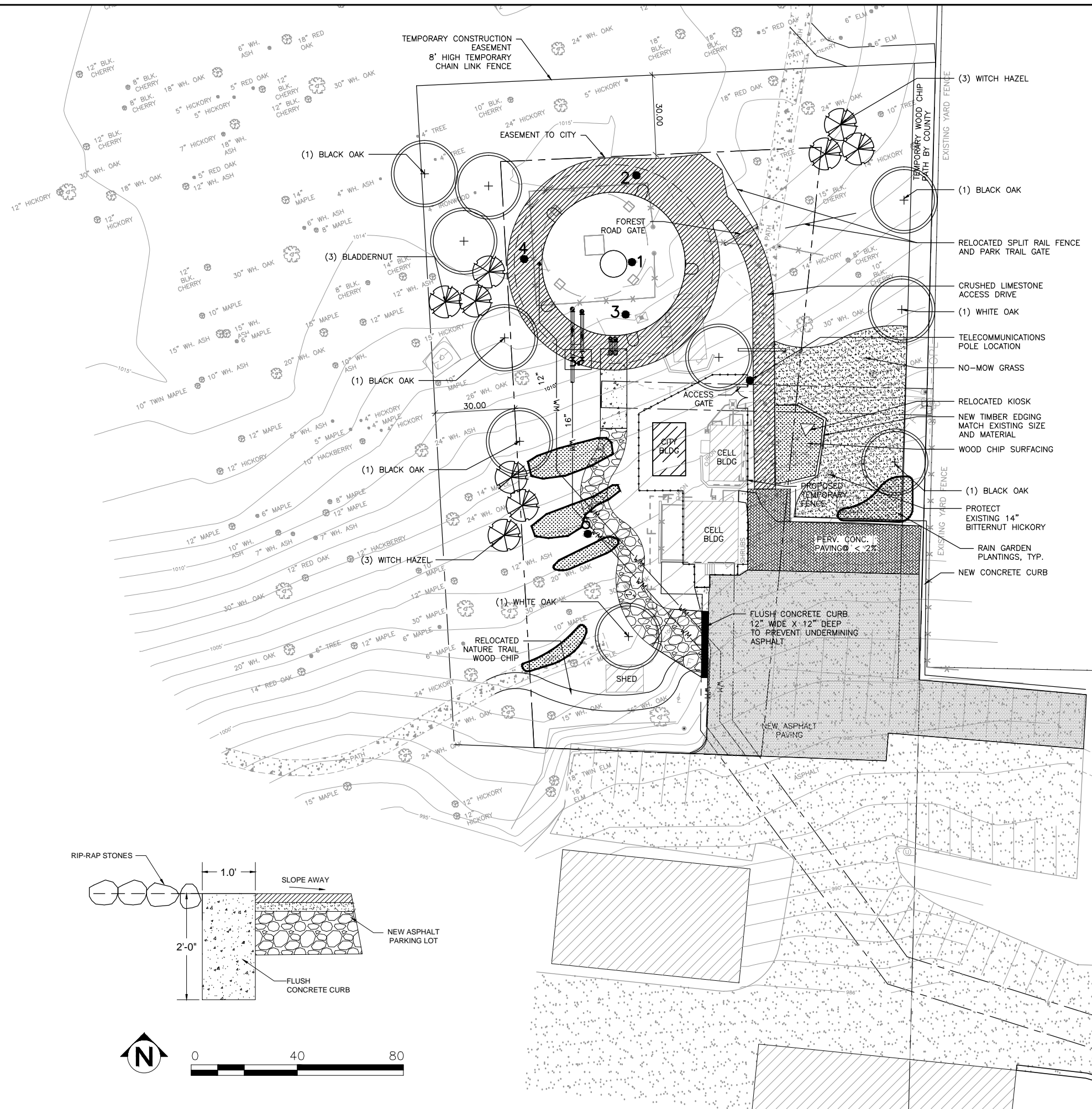
LAKEVIEW RESERVOIR  
REPLACEMENT PROJECT  
MADISON, WISCONSIN

MARK DATE REVISIONS DESCRIPTION

MADWU 126154  
PROJECT NO. 06-24-14  
ISSUE DATE JUN STRAND  
DRAWN BY SID LARSON  
Short Elliott Hendrickson, Inc. © (SEH)  
© 2004 Short Elliott Hendrickson, Inc.

SHEET TITLE  
LANDSCAPE PLAN

SHEET  
L1



**NOTE:**  
1. RESTORE WITH NO-MOW LAWN WHERE INDICATED ON PLANS AND CONFIRM LIMITS OF NO-MOW WITH OWNER. NO-MOW SHALL BE PER PRAIRIE NURSERY, OR APPROVED EQUAL.  
2. DISTURBED AREAS NOT INDICATED SHALL BE RE-SEEDED WITH WOODLAND EDGE SEED MIX BY PRAIRIE NURSERY.  
3. ALL PLANT MATERIALS SHALL BE OBTAINED FROM NATIVE STOCK NURSERIES WITHIN THE SAME PLANT ZONE & 100 MILES OF THE JOB SITE

Lakeview Reservoir Replacement Project Planting List

Code	QTY	Botanical Name	Common Name	Size	Spacing
<b>SHADE TREES</b>					
QUE-A	2	<i>Quercus alba</i>	White Oak	6' Ht.	
QUE-V	8	<i>Quercus velutina</i>	Black Oak	6' Ht.	
<b>SHRUBS</b>					
HAM-V	6	<i>Hamamelis virginiana</i>	American Witch Hazel	#5	6'
STA-T	3	<i>Staphylea trifolia</i>	American Bladdernut	#5	6'

Landscape Worksheet

Element	Point Value	Quantity Proposed	Quantity Existing	Points
Overstory Deciduous Tree	35	10		350
Shrub, deciduous	2	9		18
				<b>368</b>

