



# CENTRAL POLICE DISTRICT

Building Trust Through Community Partnerships

Volume 5, Issue 1

January 2009

## CENTRAL DISTRICT CRIMES— 2000 THROUGH 2008

Recently the Madison Police Department released the yearly metric of crime in the city with our annual data release. The data is released as Uniform Crime Reporting (UCR) and is related to a Federal Government reporting standard. For more information see <http://www.fbi.gov/ucr/ucr.htm>.

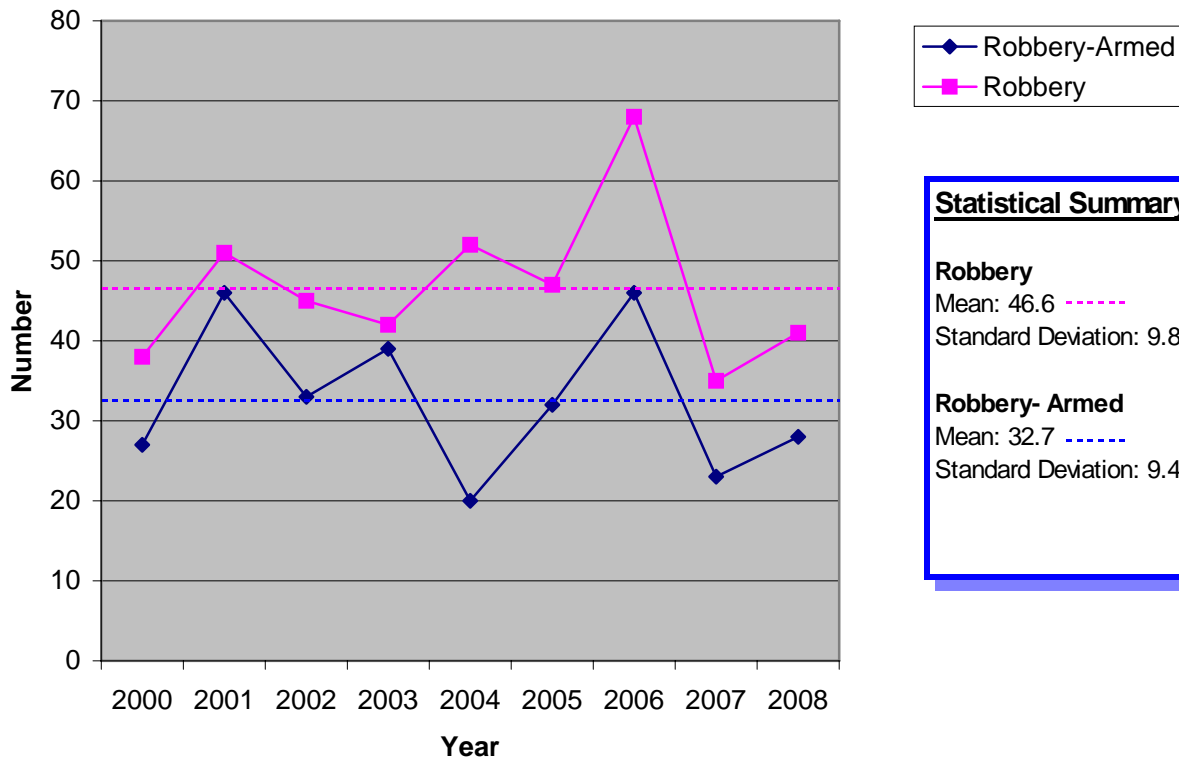
While it is interesting to see how the City rates compared to previous years and other cities, I also like to monitor Central. This generally leads to

more questions and discussions about when, where, who and why crime is occurring. The data is a great starting point, although it is often necessary to dig deeper to find root causes of the crime and disorder.

That said I have been taking a closer look at some of the crimes that tend to fuel fear and influence public perceptions of safety, specifically robbery,

*(Continued on page 4)*

**Central District Multi-Year UCR Data**



## CRIME OVERVIEW

### Person Crimes: Batteries

Date	Time	Address	Details
1/7	2:53 am	1500 Blk Williamson	Victim woke up suspect who then went into a rage and battered victim. Suspect charged with Domestic Battery.
1/9	2:30 am	200 Blk S Hancock	Officers responded to a disturbance and report of a suspect armed with a gun (weapon was an ice scraper). During arrest process, suspect was very uncooperative and at one point spit in the eye of an officer. Suspect faced numerous charges including Battery to PO and OMOVWI.
1/10	1:30 am	100 Blk King St	After being cut off or refused service due to drunkenness, two suspects engaged in an altercation, battering several people. One suspect charged with Substantial Battery, another charged with disorderly conduct.
1/11	2:01 am	700 Blk University	Disturbance ensued after one suspect approached a female and asked for a sexual encounter. Her boyfriend had something to say to the suspect who then threw a glass, striking the boyfriend. One suspect was charged with Substantial Battery and Disorderly Conduct. Another suspect was charged with disorderly conduct after he became involved in the disturbance.
1/17	8:50 am	400 Blk W Main	Victim contacted officers to report a battery. Investigation resulted in suspect being charged with Domestic Battery, Domestic Disorderly Conduct, and Domestic False Imprisonment.
1/23	2:45 am	400 Blk E Campus Mall	Suspect returned home intoxicated and battered roommate. Suspect charged with Domestic Battery and Underage Drinking.
1/28	5:50 pm	300 Blk N Brooks	Altercation between two intoxicated parties resulted in suspect being charged with Substantial Battery.

### Person Crimes: Robbery

Date	Time	Address	Details
1/13	12:45 am	200 Blk N Brooks	Victim who was delivering pizza reported being grabbed from behind by suspect (male white, 5'10", mid-20s). Victim threw suspect to the ground, returned to his vehicle, and left the area.
1/15	10:20 pm	600 Blk S Dickinson	Victim was approached from behind by suspect who tackled her and took her messenger bag, fleeing northbound on Dickinson. Suspect described as male black, 6'2", average build.
1/18	8:40 pm	600 Blk W Washington	Victim was approached by two individuals after getting off a bus who asked for a smoke. Victim had \$100 bill wrapped around cigarette pack, which suspect grabbed and fled. Suspect is male white, 6'4", full beard, black jacket with brown fur on hood, wearing Green Bay Packer No. 9 jersey.
1/25	12:20 am	900 Blk Jenifer	Officers responded to large fight. Victim reported being choked and money taken. Suspect described as male black.
1/30	3:05 am	500 Blk N Henry	Victim was walking home when she was pulled to the ground by a suspect who began going through her pockets and asking what was in them. Victim kicked and screamed and the suspect (male black, 30 to 40, 6', 180) fled.

### Disturbances, Other

Date	Time	Location	Details
1/24		200 Blk S Dickinson	Window of business shot out with buckshot.

## CRIME OVERVIEW CONTINUED

### Property Crimes: Burglaries

Date	Location	Type	Entry	Targeted/Stolen
12/25	500 Blk W Mifflin	Residential	Broke Glass Panel	X-Box and games
12/26	400 Blk W Doty	Residential	Unknown	Laptop, change, Playstation III
1/4	300 Blk N Blount	Residential	Unknown	Laptop
1/5	200 Blk N Hamilton	Residential	Unknown	Laptop
1/8	300 Blk Wisconsin Ave	Residential	Unknown	Cash
1/9	500 Blk W Mifflin	Residential	Unknown	Laptop, camera, backpack and contents
1/9	10 Blk N Carroll	Non-Residential	Unlocked door	Two laptop computers
1/12	10 Blk N Park	Non-Residential	Unlocked door	Cash
1/15	900 Blk Spring St	Residential	Unknown	Ipod and GPS taken from vehicle in underground parking
1/22	2000 Blk Atwood Ave	Residential	Unlocked garage	Checkbook, credit/debit cards.
1/23	500 Blk W Mifflin	Residential	Unlocked door	Macbook computer
1/23	100 Blk N Bedford	Residential	Unlocked door	Dell laptop, Toshiba laptop, electronics.
1/24	800 Blk Williamson	Residential	Unknown	GPS taken from vehicle in underground parking
1/24	800 Blk Williamson	Residential	Unknown	Car stereo taken from vehicle in secure underground parking
1/25	1100 Blk E Dayton	Residential	Locked window defeated	Trek bike, Mac laptop, various electronics
1/27	10 Blk N Butler	Non-Residential	Unknown	Cash
1/28	400 Blk W Johnson	Residential	Unknown	Laptop and MP3 player
1/28	1100 Blk E Wilson	Residential	Forced door	Laptop, TV, electronics, medication

### STATE STREET CARD PROGRAM

We are in our fifth month of participating with the gift card program. I have been very impressed with the positive feedback we have received not only from the recipients but also the community. Channel 3's news coverage generated a ton of support, and shortly after the news story, several citizens contacted me inquiring how to donate to the program. The community care and support this program has generated, though unexpected, is greatly appreciated.

The greatest reward has been the response from those receiving these gift cards. Recipients never expect the card and are always very thankful. Our hope is that the program will continue throughout the winter.

Thank you to the MPD Officers who have disseminated cards and to the Sivesend Family for continued support to this program.



PO Chanda Dolsen distributes a gift card to a man outside the Main Library.

## CENTRAL DISTRICT UCR OVERVIEW CONTINUED

(Continued from page 1)

armed-robbery (a weapon is used or threatened), battery, aggravated battery (more significant

injuries), and fights. When looking at data I prefer to see how things are going over time, especially if we are not experiencing a current crime trend,

which would be defined as crimes related by patterns of behavior that link them by suspect, location, or another factor. Our look at

the Central data will be limited to the crimes already listed for 2000 through last year.

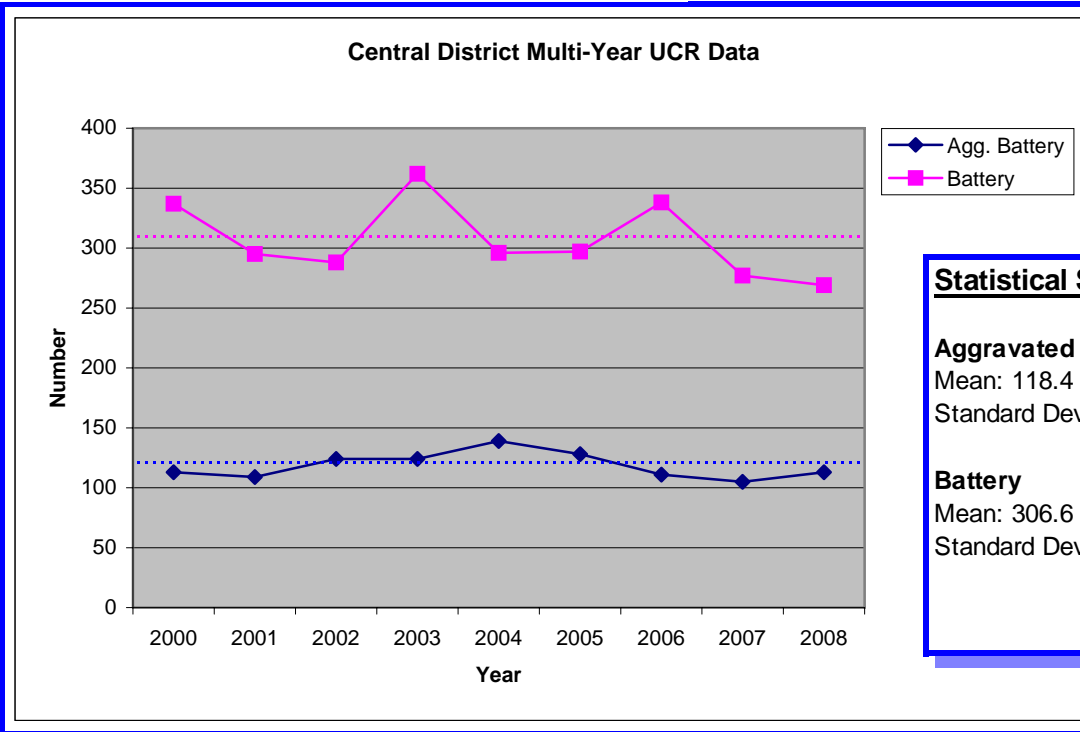
The chart and summary

on page one deal with robberies.

While we had a slight upward turn in both armed robberies and robberies, we remain down from the spikes in 2006 and still below the nine-year means for both.

The next chart, above, details data for the past nine years for batteries and aggravated batteries. The difference between the two types of batteries is directly related to the level of injury sustained by the victim, which may or may not be a function of the level of effort on the part of the suspect. When I look at this data I also aggregated it and see there is no change from 2007 to 2008, and we remain down in the overall battery category.

These crimes, robberies and batteries, tend to be street level crimes, and the Central District peaks around bar time. When you hear information related to the money of the *Downtown Safety Initiative*, those monies are used to directly impact these incidents. We attempt to plan ahead and look for the *perfect storm*, or times when we know, based on our data and experience, that the potential for these crimes is up. The resources and plans are developed by the lieutenant for the



**Statistical Summary**

**Aggravated Battery**  
 Mean: 118.4  
 Standard Deviation: 11.0

**Battery**  
 Mean: 306.6  
 Standard Deviation: 31.5

## MPD'S NEWEST K9 TEAM

The MPD is pleased to have the newest K9 team ready to hit the streets. PO Rose Douglas may look familiar to some of you, she worked as a Central officer before being chosen for the K9 position.

Rose and Martie will now be assigned to the West District Community Police Team.



**PO Rose Douglas  
K9 Martie**

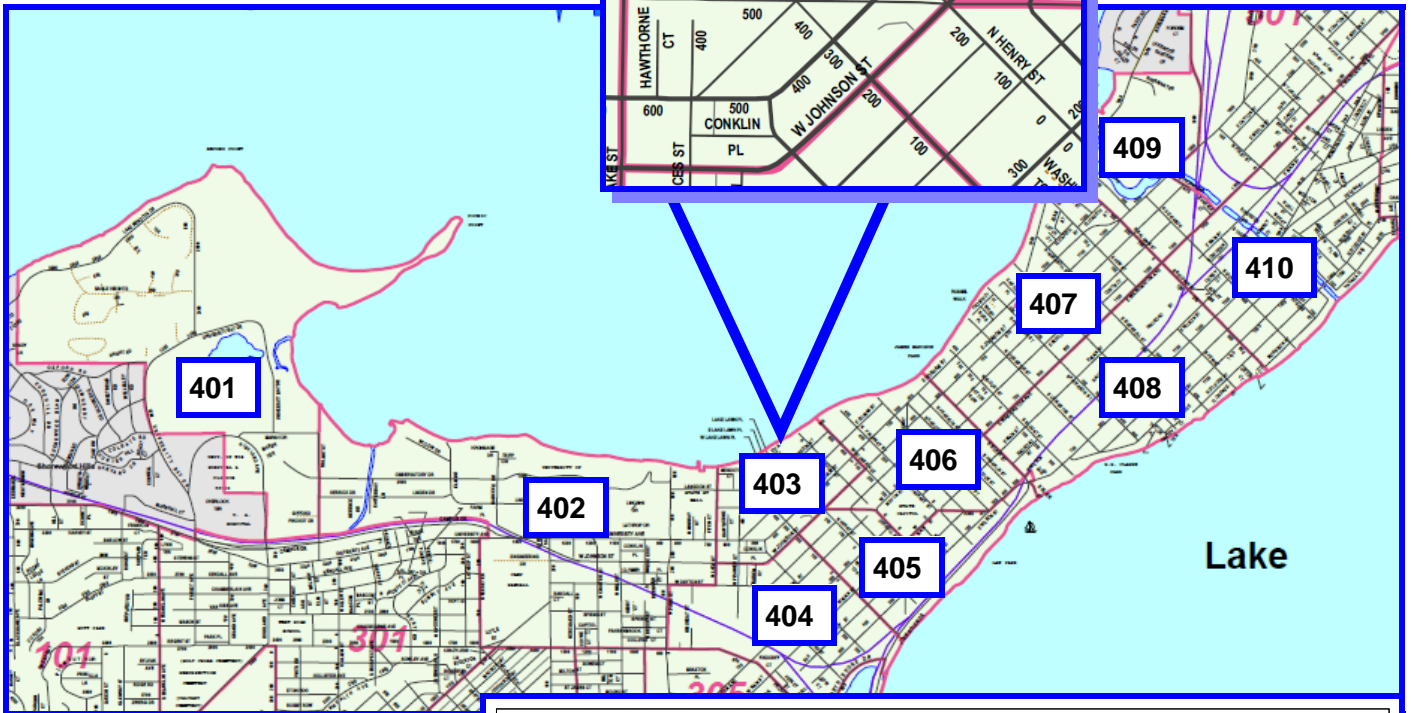
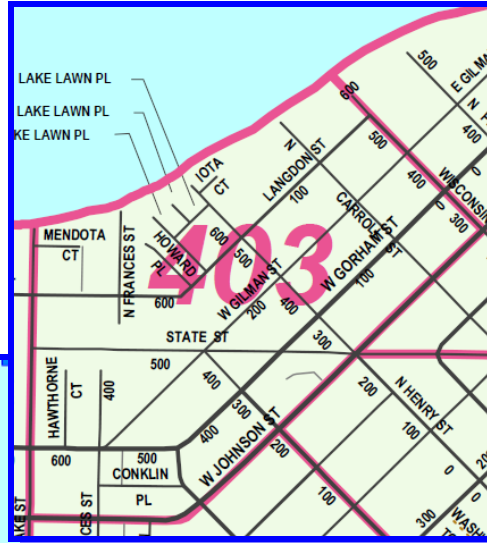
district and then implemented by the sergeants. I thought neighbors may be interested in a slightly different breakdown of where these crimes occur within the Central District. The pie-shaped chart shows the percent of these specific crime types by police sector number. The sector number corresponds to an area on the map so you can see how your neighborhood stacks up.

A huge 37% of these crimes occur in Sector 403. This sector contains lower State Street, Frances Street, and University Avenue, the heart of the entertainment district.

### Central District Police Sector Map

Police Sector 403 is a relatively small portion of the Central District.

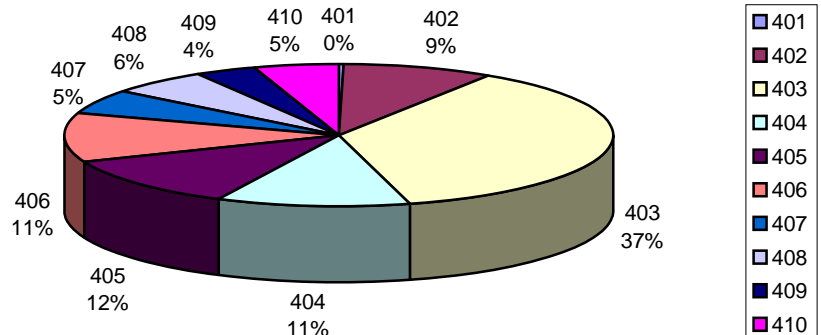
The borders for this area are Lake Street on the West, Lake Mendota on the North, Wisconsin Avenue on the East, and West Johnson Street on the South.



#### Sector Crime Totals Include:

- Armed Robbery
- Robbery
- Aggravated Battery
- Battery
- Fight in Progress

2008 UCR  
Central District Sectors



Madison Police Department  
Central District  
523 E. Main St.  
Madison, WI 53703  
Phone: 608-266-4316  
[www.madisonpolice.com/central](http://www.madisonpolice.com/central)

