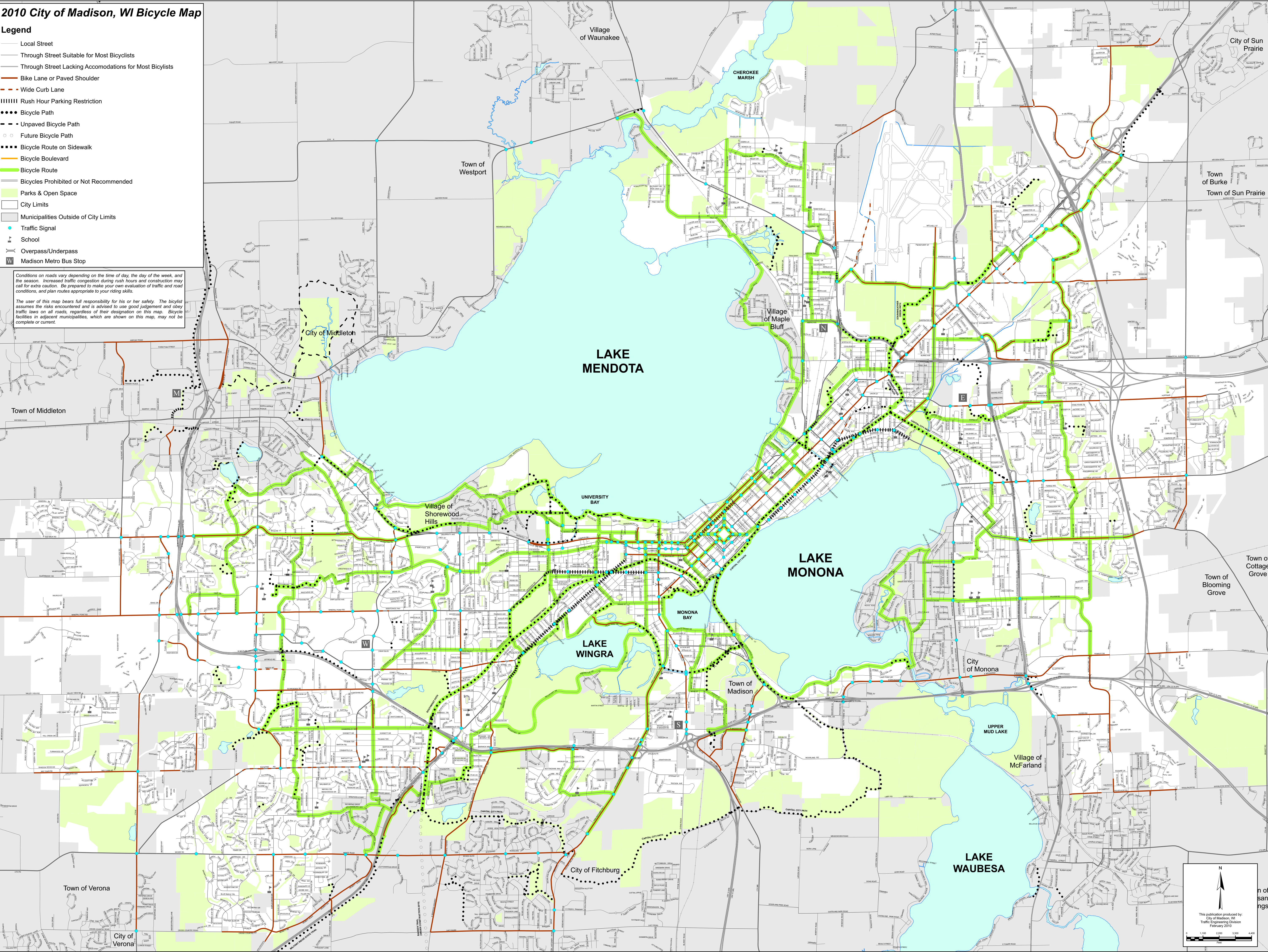


2010 City of Madison, WI Bicycle Map

- Legend**
- Local Street
 - Through Street Suitable for Most Bicyclists
 - Through Street Lacking Accommodations for Most Bicyclists
 - Bike Lane or Paved Shoulder
 - Wide Curb Lane
 - Rush Hour Parking Restriction
 - Bicycle Path
 - Unpaved Bicycle Path
 - Future Bicycle Path
 - Bicycle Route on Sidewalk
 - Bicycle Boulevard
 - Bicycle Route
 - Bicycles Prohibited or Not Recommended
 - Parks & Open Space
 - City Limits
 - Municipalities Outside of City Limits
 - Traffic Signal
 - School
 - Overpass/Underpass
 - Madison Metro Bus Stop

Conditions on roads vary depending on the time of day, the day of the week, and the season. Increased traffic congestion during rush hours and construction may call for extra caution. Be prepared to make your own evaluation of traffic and road conditions, and plan routes appropriate to your riding skills.

The user of this map bears full responsibility for his or her safety. The bicyclist assumes the risks encountered and is advised to use good judgement and obey traffic laws on all roads, regardless of their designation on this map. Bicycle facilities in adjacent municipalities, which are shown on this map, may not be complete or current.



Guide to Madison Map for Bicyclists
Detailed explanation of symbols

The Madison Map for Bicyclists shows two levels of information about Madison's streets to help bicyclists choose their preferred routes between points in the urban area.

First, there is information about types of streets and special facilities for bicyclists. What streets you choose to use will depend upon your skill and confidence level for bicycling in

Local or neighborhood streets primarily provide access to homes. These streets have low volumes of traffic and slow speeds. Local streets do not need any special accommodations for bicyclists. Many bicyclists, however, find local streets inconvenient for longer trips due to frequent stops or circuitous routes.

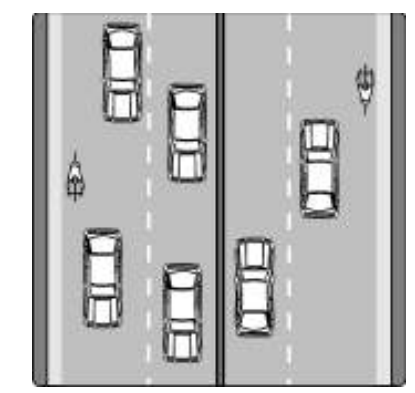
Collector and arterial streets suitable for most bicyclists, but without any special facilities for bicyclists.

Collector streets connect the neighborhood streets to the main streets. Collector streets have higher volumes of traffic and higher speeds than local streets, but generally are acceptable to most bicyclists without the need for special facilities.

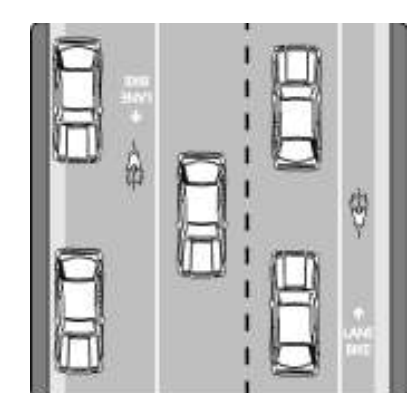
Arterial streets are the main routes through the city. Arterial streets. Collector streets have higher volumes of traffic and higher speeds than local streets, but generally are acceptable to most bicyclists without the need for special facilities.

Two bicycle treatments are used on some of Madison's busier streets: wide curb lanes and bicycle lanes.

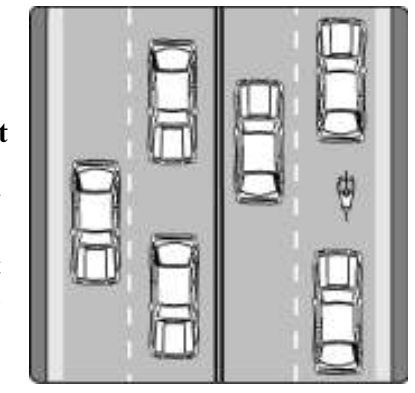
Wide curb lane means that the traffic lane next to the curb (the right most lane) is extra wide so a motorist can safely pass a bicyclist without having to change lanes. There is no line painted on the street separating motorists from the



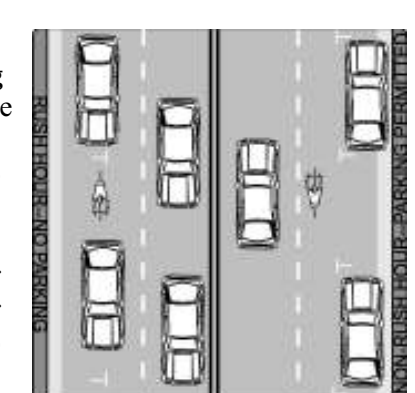
Bicycle lane is a separate lane on the street for bicyclists. This lane is sometimes shared with parked cars or buses.



Many busier streets, however, lack adequate accommodations for most bicyclists. Experienced bicyclists may be skilled enough to use these streets, but most bicyclists will prefer to find an alternate route.

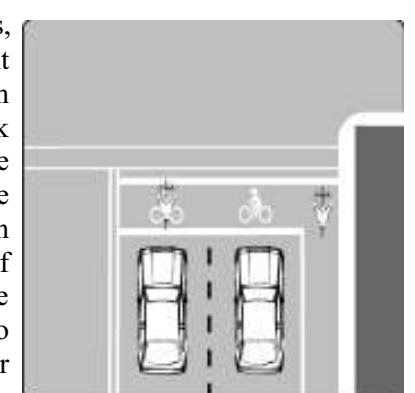


Rush hour parking restrictions apply on some major streets in the central area. During non-rush hour times, these extra wide parking lanes provide a similar accommodation for bicyclists as a wide curb lane or bike lane.



Bike paths are streets for bicyclists, on which motorized vehicles are prohibited. Bike paths, however, are shared with pedestrians, skaters, and other non-motorized users. Please ride responsibly on bike paths, and share the paths with others.

Bike boxes are rectangles, painted on the pavement at intersections, which move car traffic back several feet from the crossing and allow space for bicyclists to position themselves in front of waiting traffic. Bike boxes are intended to reduce bicycle and car collisions, especially those between drivers turning right and bicyclists going straight by providing greater visibility.

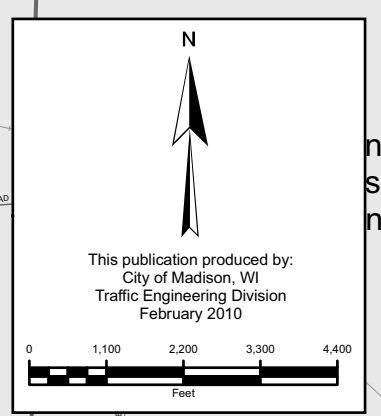


Bicycle Boulevards are low volume, low speed, local streets that take the shared roadway bike facility to a new level, creating an attractive, convenient, and comfortable cycling environment that is welcoming to most cyclists regardless of age or skill level. Bicycle Boulevards are indicated with special blue signs and pavement markings, which inform both bicyclists and motorists of the special nature of these streets. Signing and marking examples are show below.



Bike routes are the second level of information shown on the map. These routes are intended to indicate major routes through the city (mobility) that most bicyclists will feel comfortable using. They are not intended to link all possible locations (access). Bicyclists are not required to use these routes. New bicyclists, and bicyclists new to Madison, will find these routes useful for getting to know Madison by bicycle. Bike routes use a combination of local and collector streets, arterial streets with bike lanes or wide curb lanes, overpasses and underpasses.

Bike routes on a sidewalk are used in a few areas due to difficult roadway conditions in order to insure route continuity.



This publication produced by:
City of Madison, WI
Traffic Engineering Division
February 2010