

Estimate of work:
\$14,775

CONVERT
CROSSWALKS
TO
CONTINENTAL
CROSSWALKS.

CONVERT
CROSSWALKS
TO
CONTINENTAL
CROSSWALKS.

EXISTING PARKING TO
REMAIN. ADD SHARROWS.

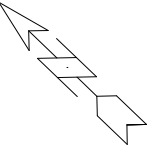
REMOVE 4 PARKING SPOTS.
ADD BIKE LANE.

EXISTING RP3 PARKING TO
REMAIN. ADD BIKE SHARROWS.

REMOVE 6 RP3 PARKING
SPOTS. ADD BIKE LANE.

EXISTING RP3 PARKING TO
REMAIN. ADD BIKE SHARROWS.

EXISTING RP3 PARKING TO
REMAIN. ADD BIKE SHARROWS.



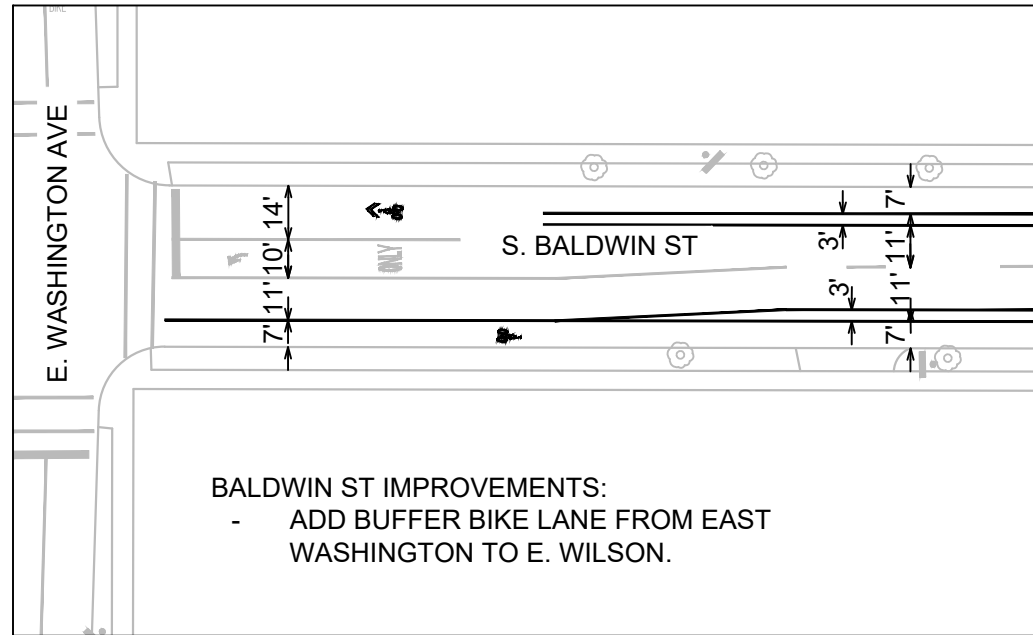
MARK	REVISION	DATE	BY
	Designed By: LMC	Date: 9/27/2023 10:59 AM	Scale: 1/75

SIGNING AND MARKING PLAN
N. BALDWIN - BIKE LANE
M:\DESIGN\Traffic\Maps_Plans\SM-Plans\sm2023_Baldwin St - Potential Projects.dwg

MADISON, WI
CONTRACT NO:



Estimate of Work:
\$15,450



BALDWIN ST IMPROVEMENTS:
- ADD BUFFER BIKE LANE FROM EAST WASHINGTON TO E. WILSON.

REMOVE 17 PARKING SPOTS.
ADD BIKE LANE.

REMOVE 4 PARKING SPOTS.
ADD BIKE LANE.

S. BALDWIN ST



SIGNING AND MARKING PLAN

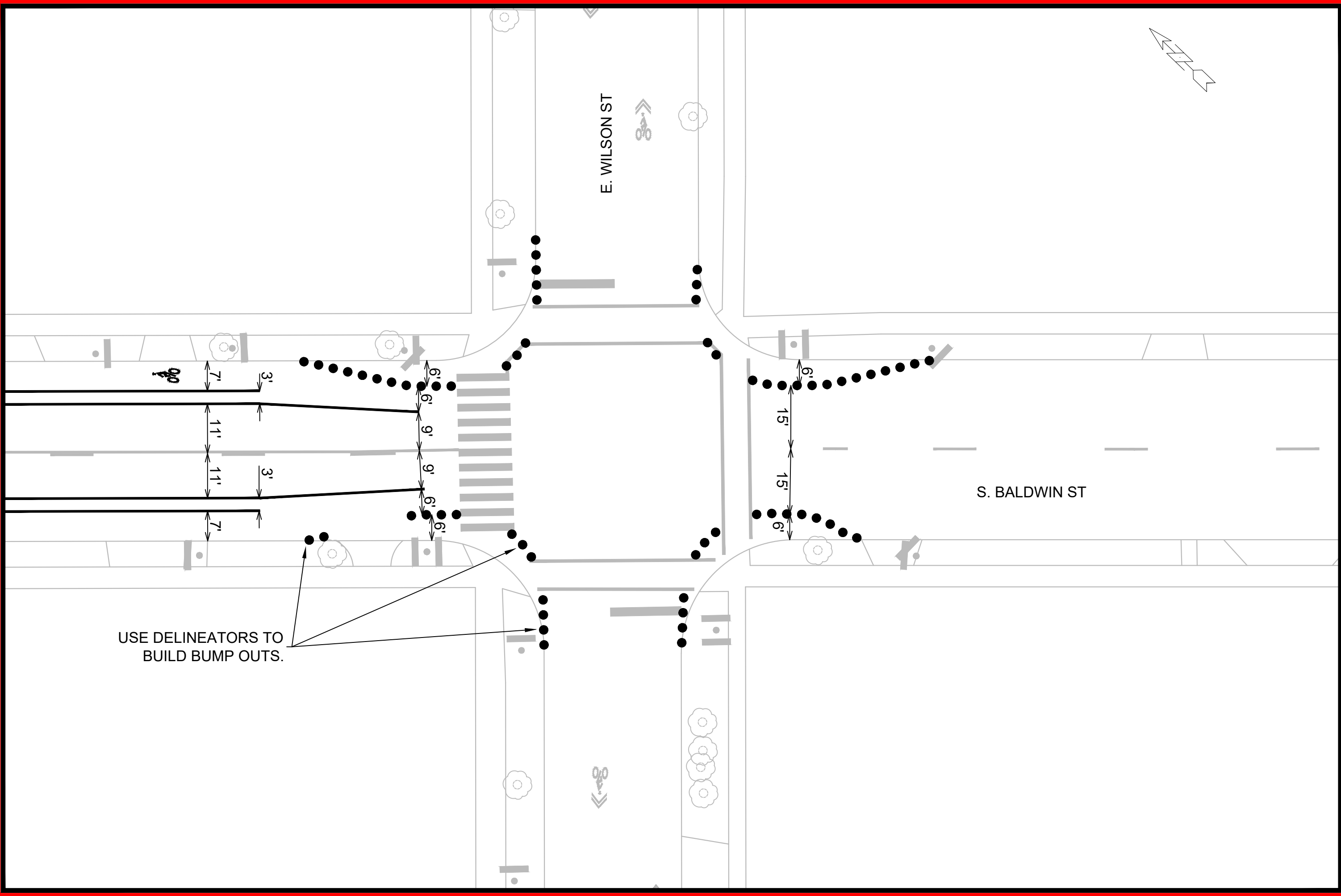
S. BALDWIN - BIKE LANE

M:\DESIGN\Traffic\Maps_Plans\SM-Plans\sm2023_Baldwin St - Potential Projects.dwg

MADISON, WI

CONTRACT NO:

MARK	REVISION	DATE	BY
	1	9/27/2023 11:01 AM	LMC



USE DELINEATORS TO BUILD BUMP OUTS.

E. WILSON ST

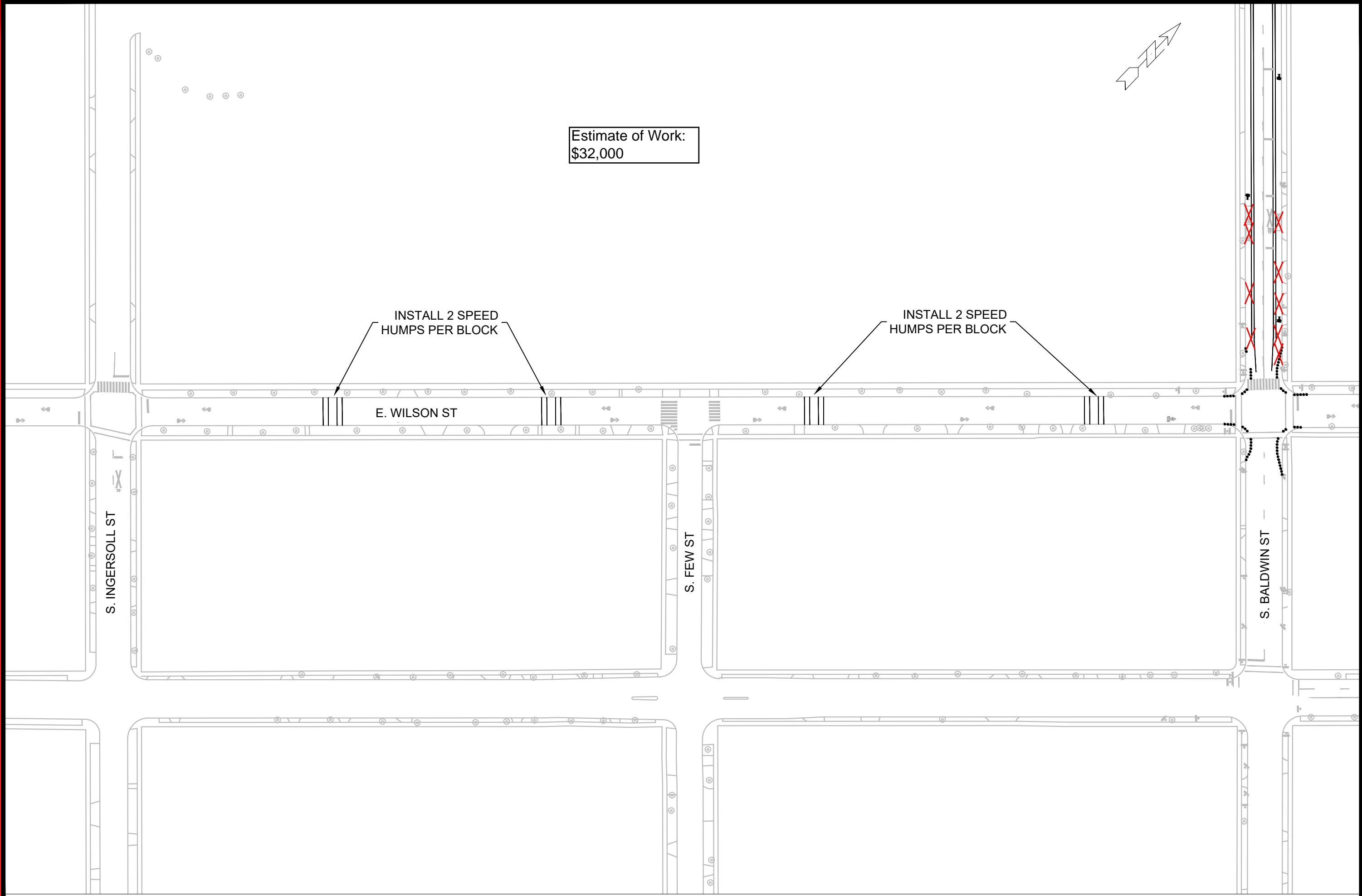
S. BALDWIN ST

MARK	REVISION	DATE	BY
Designed By: LMC	Date: 9/27/2023 11:03 AM	Scale: 1/20	

SIGNING AND MARKING PLAN
S. BALDWIN - BIKE LANE
 M:\DESIGN\Traffic\Maps_Plans\SM-Plans\sm2023_Baldwin St - Potential Projects.dwg
 MADISON, WI
 CONTRACT NO:

SIGNING AND MARKING PLAN
S. BALDWIN - BIKE LANE
 M:\DESIGN\Traffic\Maps_Plans\SM-Plans\sm2023_Baldwin St - Potential Projects.dwg





Estimate of Work:
\$32,000

INSTALL 2 SPEED
HUMPS PER BLOCK

INSTALL 2 SPEED
HUMPS PER BLOCK

E. WILSON ST

S. INGERSOLL ST

S. FEW ST

S. BALDWIN ST

MARK	REVISION	DATE	BY
	Designed By: LMC	Date: 9/27/2023 11:04 AM	Scale: 1"=100'

SIGNING AND MARKING PLAN
E. WILSON ST - SPEED HUMPS
 M:\DESIGN\TrafficMaps_Plans\SM-Plans\sm2023_Baldwin St - Potential Projects.dwg
 MADISON, WI
 CONTRACT NO:

