



# Gammon Rd & Watts Rd Intersection Safety Improvements

WisDOT Design Project ID - 5992-07-18

WisDOT Construction Project ID - 5992-07-19

December 12, 2022

# Introductions

- City of Madison – Mark Winter
- JT Engineering – Jim Pavelski

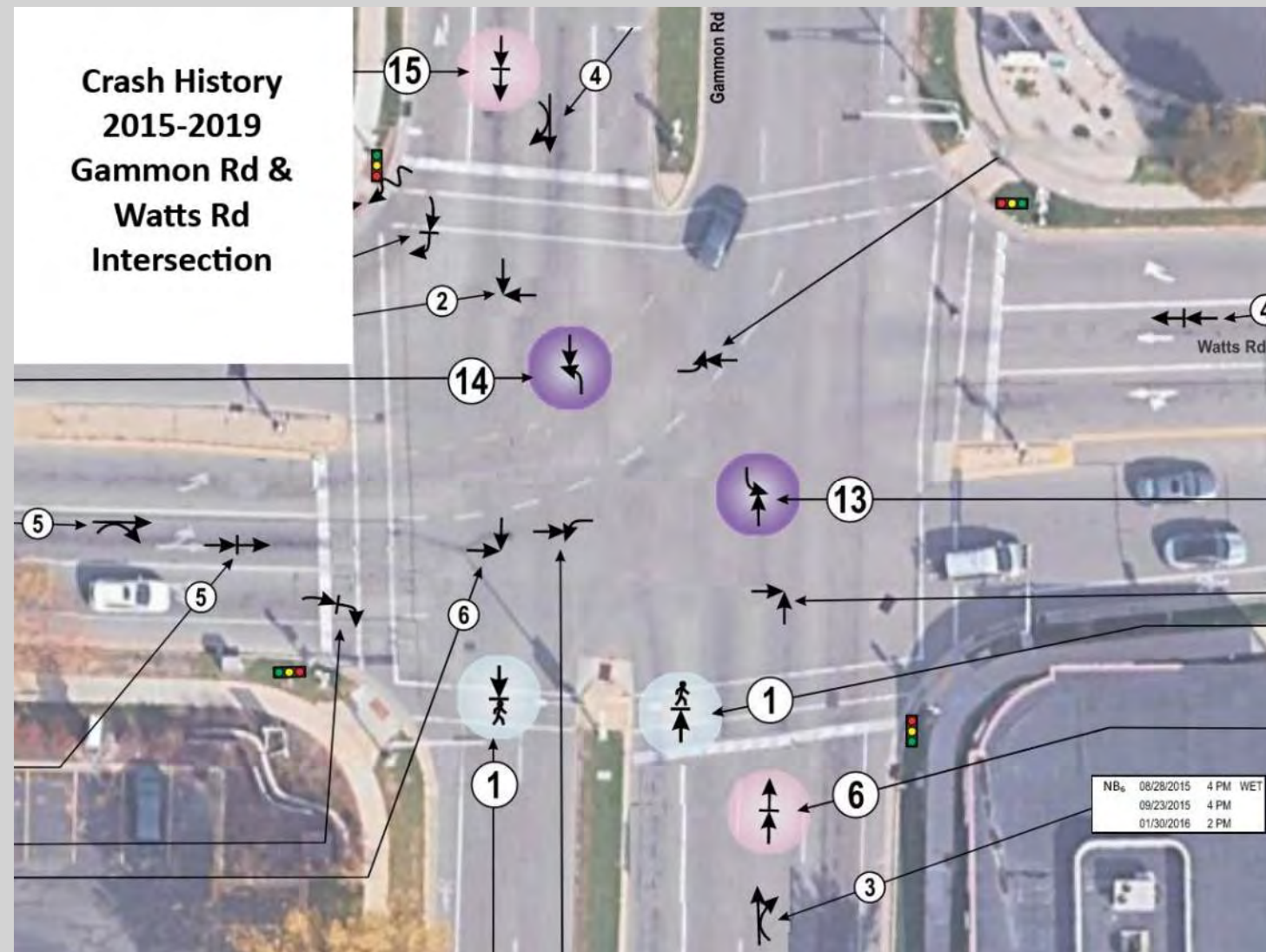
# Existing Intersection

- Signalized Intersection
  - Turn lanes in all directions
  - Left turn phasing in all directions
  - Right turn phasing for eastbound and southbound traffic
- Gammon Rd
  - 4-6 lanes, divided
  - 31,000 – 39,000 vehicles per day
  - Pavement in good condition
- Watts Rd
  - 4 lanes, undivided
  - 8,000 – 19,000 vehicles per day
  - Pavement in good condition



# Intersection Safety (Study of 2015-2019)

- 85 crashes in 5 years
  - 26 injury crashes (Including 2 severe crashes)
- 27 crashes involving NB/SB left turns
  - 12 injury crashes (Including 2 severe crashes)
- 32 rear end crashes
  - 10 injury
- 2 pedestrian crashes
  - Both injury



# Purpose and Need

- Improve intersection safety
  - Reduce angle crashes
    - (Gammon Rd left turning vehicles)
  - Reduce rear end crashes
  - Improve pedestrian safety
- Minimize costs
  - Pavement is in good condition
  - Traffic signal operating efficiently



# Highway Safety Improvement Program (HSIP)

- Federal program funding safety improvement projects
- Administered by Wisconsin Department of Transportation
- Benefit/cost analysis
- Approved project funding – 90% federal, 10% local match



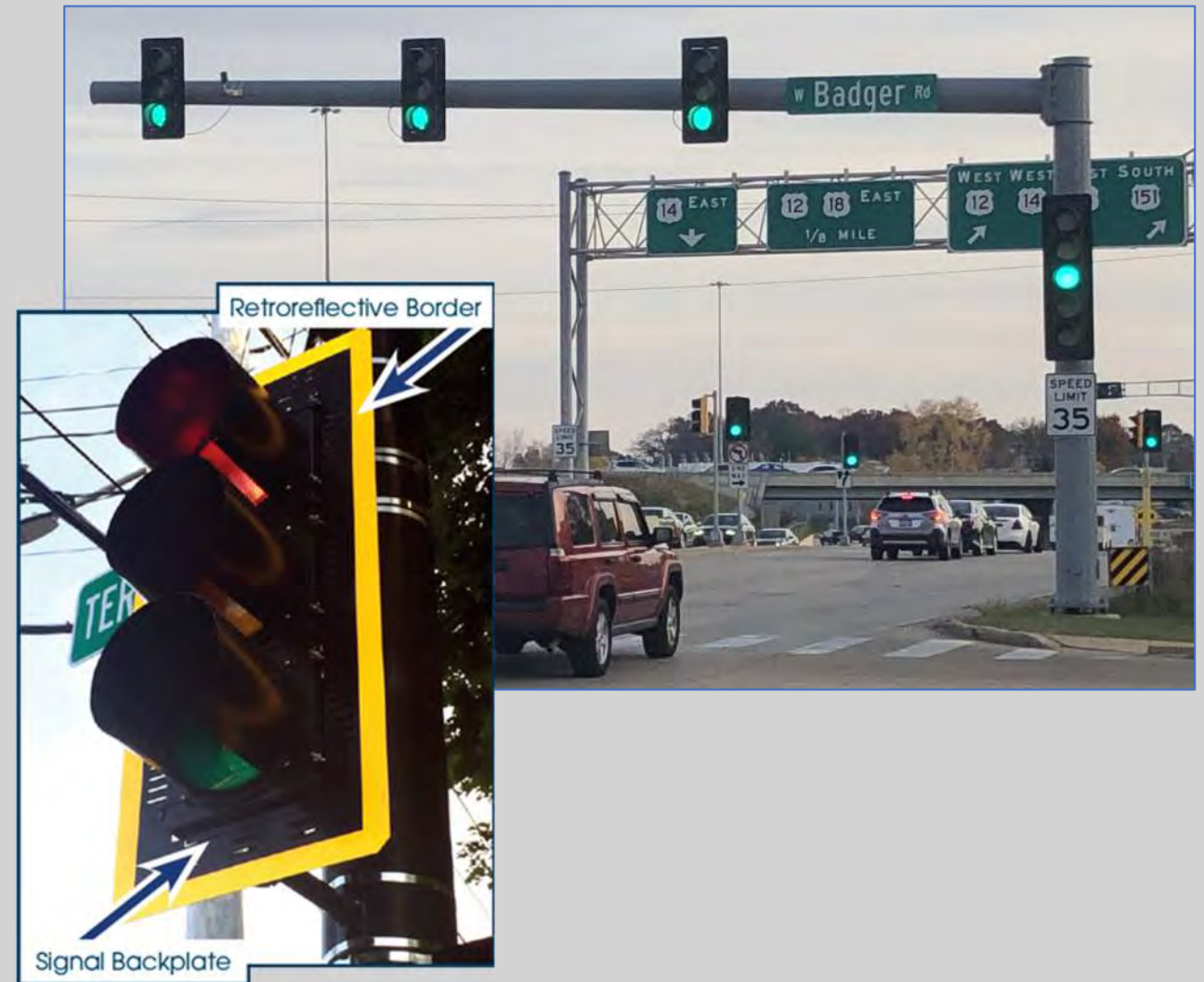
# Proposed Improvements

- Left turn lane offsets
  - Studies show intersection crashes reduced by 1/3



# Improved Visibility of Traffic Signal Heads

- Monotube-mounted traffic signals
- Reflective backplates
- Combination reduces angle and rear end crashes by 3% - 9%



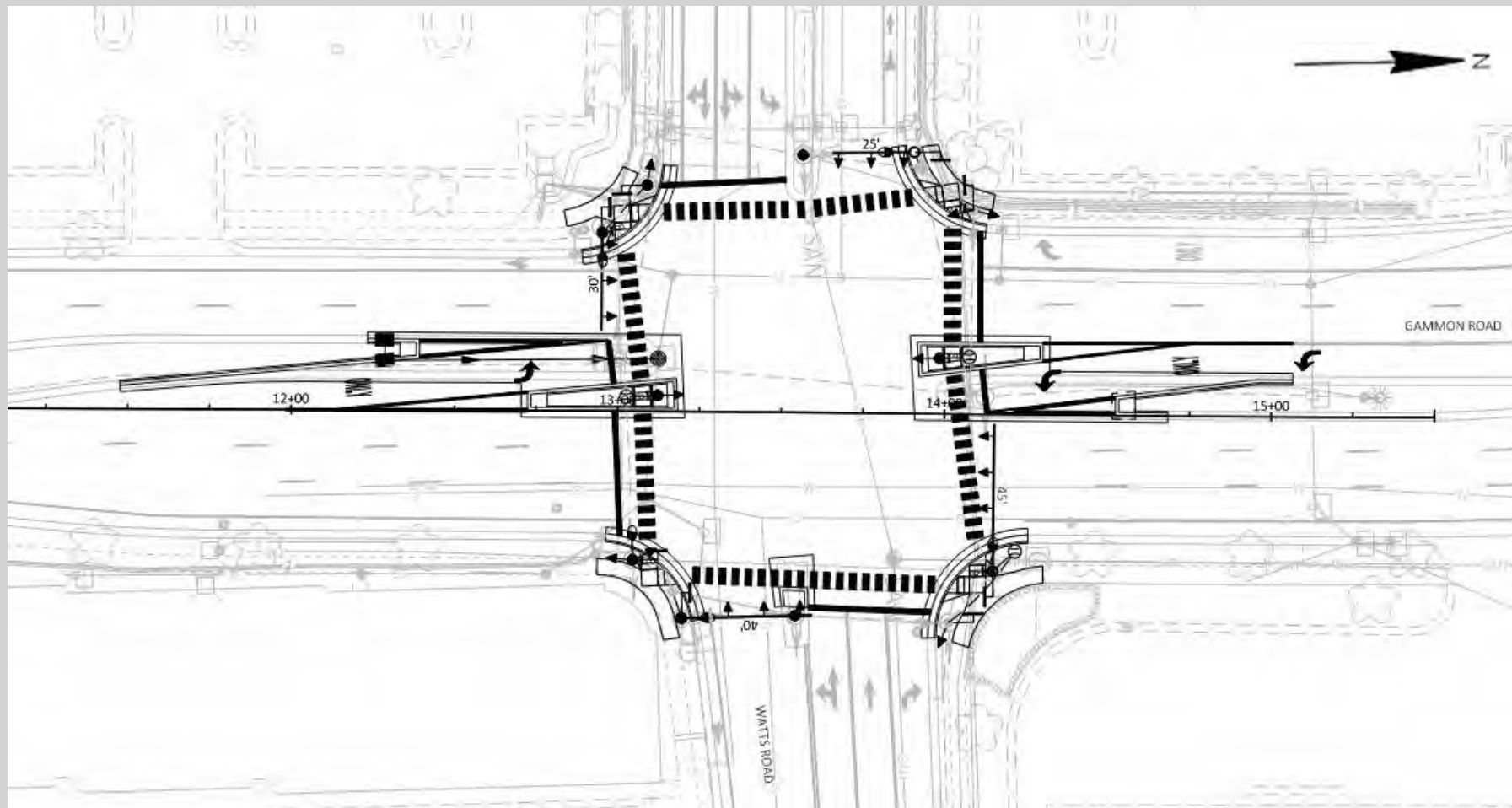


# Pedestrian Crossing Improvements

- All new curb ramps
- Pedestrian refuge islands
- Continental style crosswalk pavement marking



# Proposed Intersection Concept



# Real Estate Impacts

- Footprint will remain the same
- A temporary limited easement will be pursued in one quadrant for grading

# Construction Staging

- Construction is planned for 2024
- Intersection will remain open
  - All vehicular movements will still be allowed
  - Driveways will not be impacted
  - Bicycle lane closures
- Lane closures will create delay
- Crosswalk closures will be staged to maintain pedestrian access



# Project Costs

- Construction costs are estimated at less than \$600,000
- Design approximately \$75,000
- 90% federally funded – Highway Safety Improvement Program
- 10% City of Madison funded

# Questions or Comments

- Questions and comments are also welcome outside of this meeting.
- Please provide comments by December 26.



ENGINEERING

Jim Pavelski

[jimp@jt-engineering.com](mailto:jimp@jt-engineering.com)

(608) 515-5365



Mark Winter

[MWinter@cityofmadison.com](mailto:MWinter@cityofmadison.com)

(608) 266-6543



Lorraine Betzel

[Lorraine.Betzel@dot.wi.gov](mailto:Lorraine.Betzel@dot.wi.gov)

(608) 246-3279