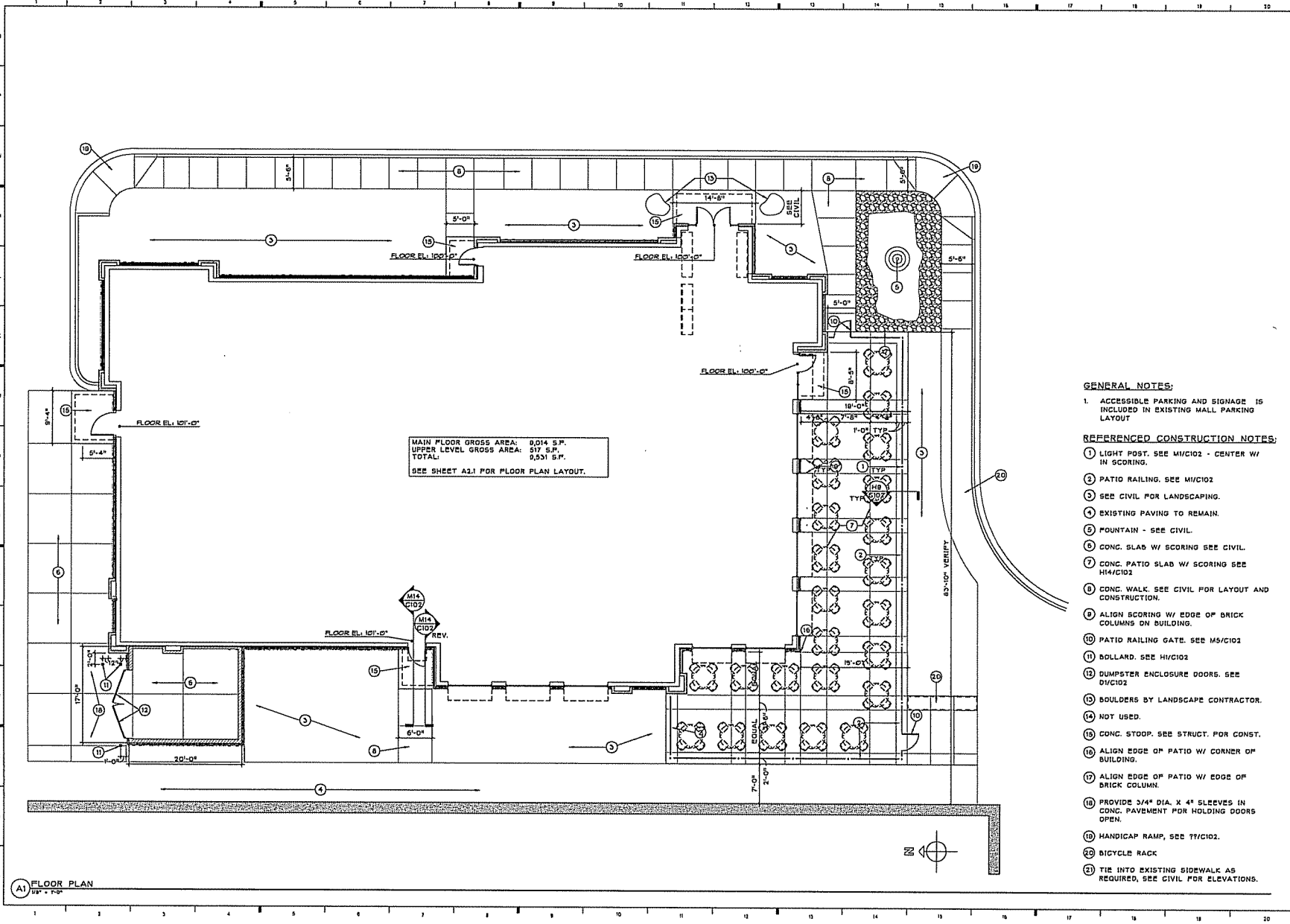




SJA ARCHITECTS
 DULUTH • ST CLOUD
 2035 15TH Street N
 St. Cloud, Minnesota 56303
 Phone (320) 253-2100
 Fax (320) 253-2269
 www.stanlusjohnson.com



MAIN FLOOR GROSS AREA: 9,014 S.F.
 UPPER LEVEL GROSS AREA: 517 S.F.
 TOTAL: 9,531 S.F.
 SEE SHEET A2.1 FOR FLOOR PLAN LAYOUT.

GENERAL NOTES:

1. ACCESSIBLE PARKING AND SIGNAGE IS INCLUDED IN EXISTING MALL PARKING LAYOUT

REFERENCED CONSTRUCTION NOTES:

- ① LIGHT POST. SEE M1/C102 - CENTER W/ IN SCORING.
- ② PATIO RAILING. SEE M1/C102
- ③ SEE CIVIL FOR LANDSCAPING.
- ④ EXISTING PAVING TO REMAIN.
- ⑤ FOUNTAIN - SEE CIVIL.
- ⑥ CONG. SLAB W/ SCORING SEE CIVIL.
- ⑦ CONG. PATIO SLAB W/ SCORING SEE M14/C102
- ⑧ CONG. WALK. SEE CIVIL FOR LAYOUT AND CONSTRUCTION.
- ⑨ ALIGN SCORING W/ EDGE OF BRICK COLUMNS ON BUILDING.
- ⑩ PATIO RAILING GATE. SEE M5/C102
- ⑪ BOLLARD. SEE M1/C102
- ⑫ DUMPSTER ENCLOSURE DOORS. SEE D1/C102
- ⑬ BOULDERS BY LANDSCAPE CONTRACTOR.
- ⑭ NOT USED.
- ⑮ CONG. STOOP. SEE STRUCT. FOR CONST.
- ⑯ ALIGN EDGE OF PATIO W/ CORNER OF BUILDING.
- ⑰ ALIGN EDGE OF PATIO W/ EDGE OF BRICK COLUMN.
- ⑱ PROVIDE 3/4" DIA. X 4" SLEEVES IN CONG. PAVEMENT FOR HOLDING DOORS OPEN.
- ⑳ HANICAP RAMP, SEE T1/C102.
- ㉑ BICYCLE RACK
- ㉒ TIE INTO EXISTING SIDEWALK AS REQUIRED, SEE CIVIL FOR ELEVATIONS.

REVISIONS		
Mark	Date	Description

PROJECT
 GRANITE CITY
 FRONT & BIRCHWAY
 MADISON WEST
 MADISON, WISCONSIN
 for
 Granite City Food and Brewery
 401 Cedar City Drive
 Madison, WI 53704
 www.granitecity.com

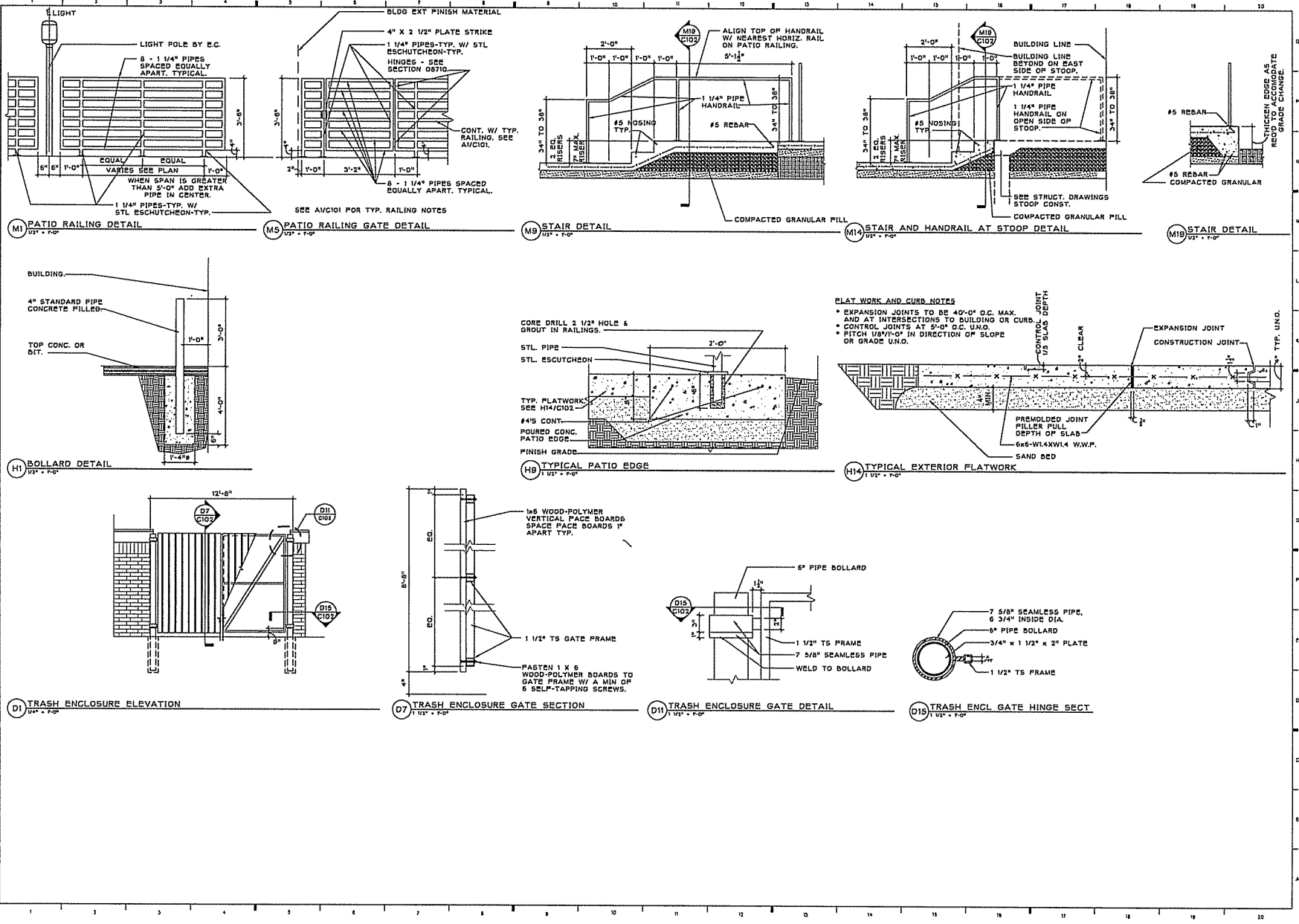
SJA ARCHITECTS
 SITE PLAN

© Copyright 2006
 SJA Architects, Inc.
 All rights reserved.

**PRELIMINARY
 NOT FOR CONSTRUCTION**

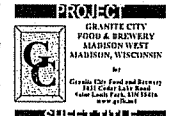
Drawn By: _____
 Checked By: _____
 Job No.: **C101**
 Date: _____

A1) FLOOR PLAN
 0/2" = 1/8"



SJA ARCHITECTS
DULUTH • ST CLOUD
2035 15TH Street N
St. Cloud, Minnesota 56303
Phone (320) 253-2100
Fax (320) 253-2269
www.sjanusjohnson.com

REVISIONS		
Mark	Date	Description



SITE DETAILS

© Copyright 2008
SJA Architects, Inc.
All rights reserved.

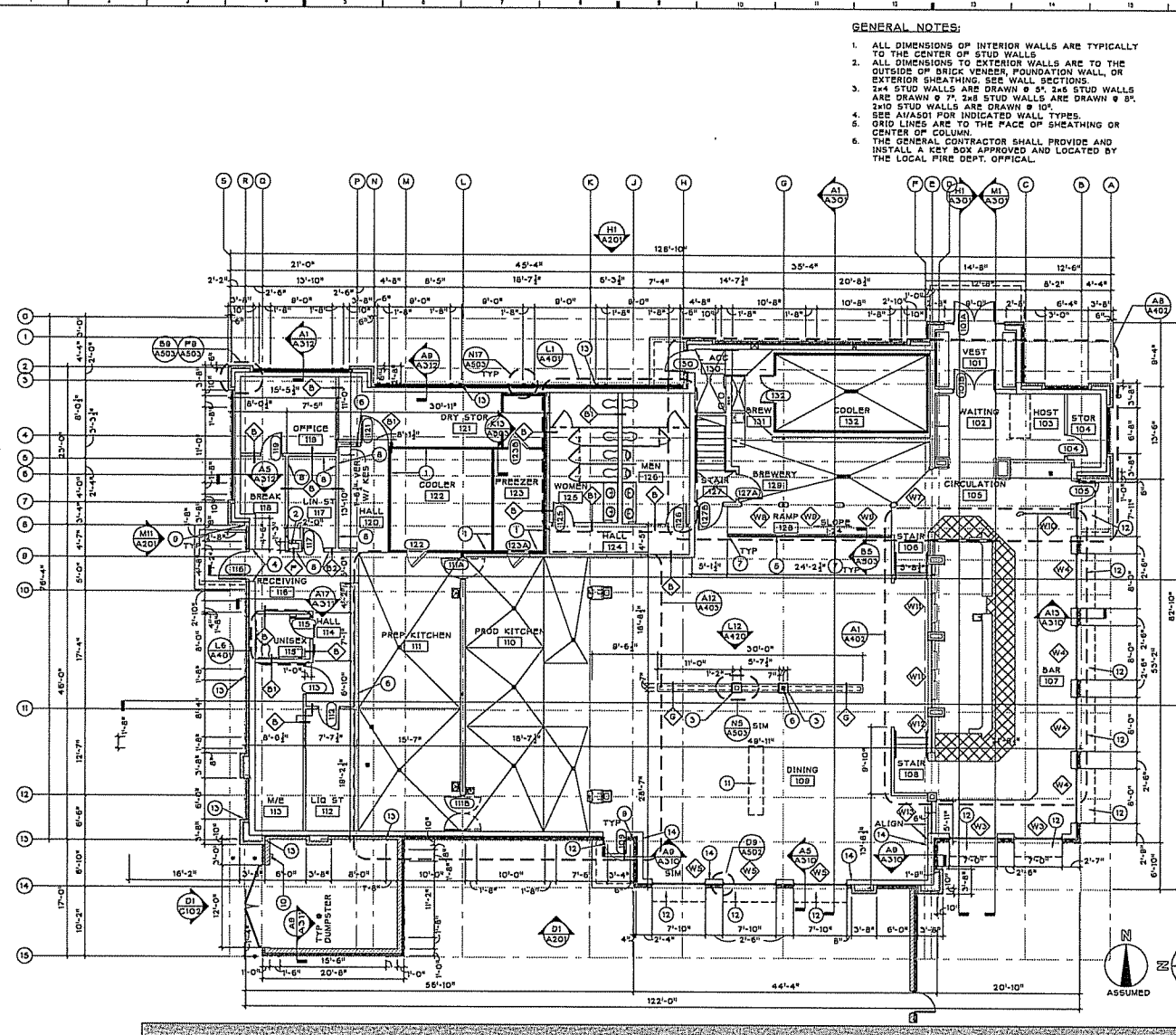
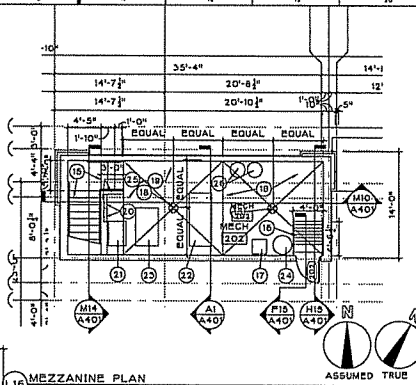
**PRELIMINARY
NOT FOR
CONSTRUCTION**

[Signature]

Drawn By: _____ Date: _____
Checked By: _____
Job No: **C102**
Date: _____

GENERAL NOTES:

1. ALL DIMENSIONS OF INTERIOR WALLS ARE TYPICALLY TO THE CENTER OF STUD WALLS.
2. ALL DIMENSIONS TO EXTERIOR WALLS ARE TO THE OUTSIDE OF BRICK VENEER, FOUNDATION WALL, OR EXTERIOR SHEATHING. SEE WALL SECTIONS.
3. 2x4 STUD WALLS ARE DRAWN @ 8". 2x6 STUD WALLS ARE DRAWN @ 7". 2x8 STUD WALLS ARE DRAWN @ 8". 2x10 STUD WALLS ARE DRAWN @ 10". SEE A1/AS01 FOR INDICATED WALL TYPES.
4. GRID LINES ARE TO THE FACE OF SHEATHING OR CENTER OF COLUMN.
5. THE GENERAL CONTRACTOR SHALL PROVIDE AND INSTALL A KEY BOX APPROVED AND LOCATED BY THE LOCAL FIRE DEPT. OFFICIAL.



REFERENCED CONSTRUCTION NOTES

1. COOLER WALLS SHOWN CROSS HATCH -BY K.E.S.
2. ROOF DRAIN LEADER SEE MECH.
3. PROVIDE SHAFT ENCLOSURE TO DECK W/ STONE VENEER CLADDING TO EL. 112'-6". CONSTRUCT USING WOOD STUDS AND CEMENT BOARD WITH STONE VENEER BY MAS. CONTRACTOR. ENCLOSURE ABOVE STONE TO BE 5/8" GYP DD FINISHED AND PAINTED BLACK. GOOD. STONE WORK PREP. FOR M. THERMOSTATS AND SENSORS.
4. FRAME BY KES - SEE DTL A5/AS02.
5. RAILING BY KES.
6. COLUMN. SEE STRUCT. PAINT WHERE EXPOSED TO MATCH EXPOSED STRUCTURE ABOVE.
7. VERT. 3/4"x3/16" STEEL TUBE POST @ 6'-0" O.C. MAX. AND AT UNSUPPORTED WALL ENDS SEE PLAN FOR LOCATIONS. SEE A1/AS01 WALL TYPE "C" FOR DETAILS OR DTL B5/AS03 AT PIPE RAILING BY KES.
8. FRP PANEL WALL FINISH. SEE D1/AS03 FOR SPECIAL WALL CONST. ST STL PANELS TO BE APPLIED OVER FRP AT SOME LOCATIONS BY KES.
9. PROVIDE 1/2" WIDE JT. W/ BACKER ROD AND SEALANT AT BRICK AND EIPS JUNCTION IJT. BY EIPS CONTRACTOR. ABOVE BELT LINE.
10. PACK LIGHT. SEE ELECTRICAL DRAWINGS.
11. CASEWORK BY KES.
12. AWNING ABOVE.
13. MASONRY VERTICAL CONTROL JT. FULL HT.
14. PROVIDE TUSCAN FINISH BEHIND BOOTHS.
15. VINYL COVERED WOOD STAIR.
16. WOOD SHIP'S LADDER TO ROOF.
17. BOOSTER HEATER.
18. FLOOR DRAIN, EL. 111'-11".
19. 4" CONC. FLOOR W/ 6X6-W/4XW1.4 W/WF OVER SUBFLOOR AND MEMBRANE TO SLOPE TO DRAINS, 1/8" PER FOOT MIN. SLOPE TYP. WRAP MEMBRANE UP WALLS 6". PROVIDE BLKG BETWEEN STUDS AS REQ'D.
20. ELECTRICAL PANEL.
21. BREWERY GYCOL.
22. BREWERY BOILER.
23. BREWERY CHILLER.
24. HOT WATER HEATER.
25. FULL WALL UP TO CLG.
26. CARBONATION TANKS.

SJA ARCHITECTS
DULUTH + ST CLOUD

2035 15TH Street N
St. Cloud, Minnesota 56303
Phone (320) 253-2100
Fax (320) 253-2269
www.stanlujohnson.com

REVISIONS

Mark	Date	Description

PROX-CO
GRANITE CITY
FOUR-B BREWERY
MADISON WEST
MADISON, WISCONSIN

Created by: [Name] and [Name]
2012 12 14 10:00 AM
4000 Lakes Park, NW 15116
www.prox-co.com

FLOOR PLAN

© Copyright 2008
SJA Architects, Inc.
All rights reserved.

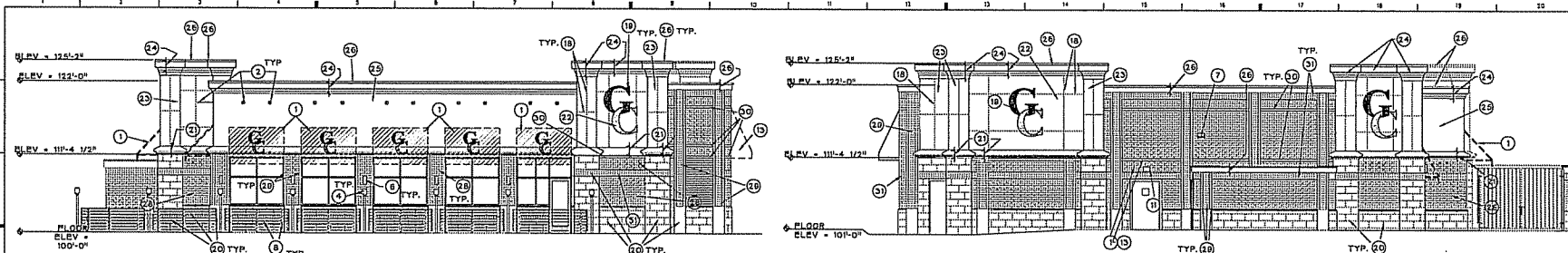
**PRELIMINARY
NOT FOR
CONSTRUCTION**

Drawn By: DL
Checked By: DL
Job No: 03302
Date: 12/14/08

A101

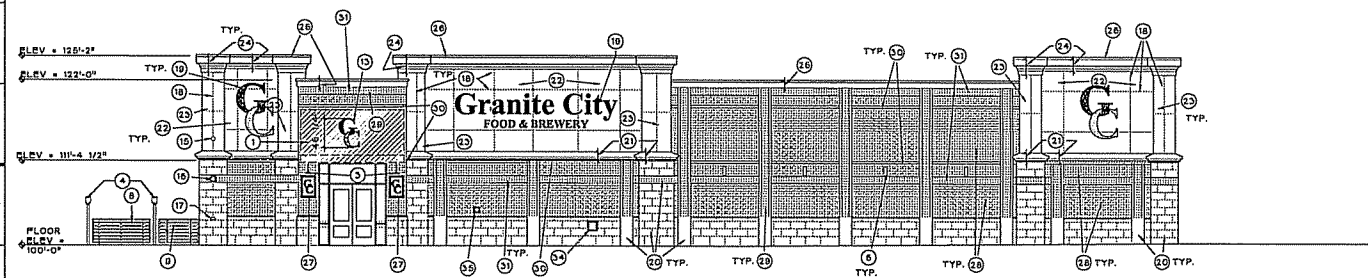


SJA ARCHITECTS
 DULUTH • ST CLOUD
 2035 15TH Street N
 St. Cloud, Minnesota 56303
 Phone (320) 253-2100
 Fax (320) 253-2259
 www.stanluisjohnson.com

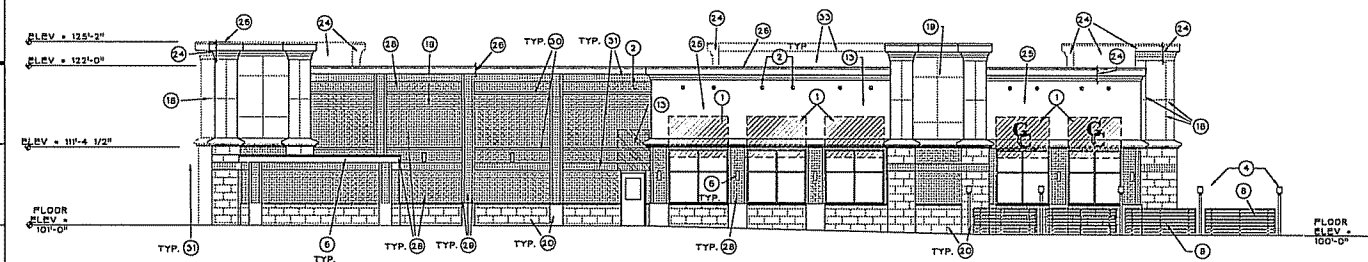


M1 ASSUMED EAST ELEVATION
 1/8" = 1'-0"

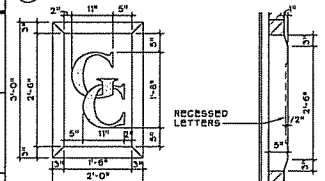
M11 ASSUMED WEST ELEVATION
 1/8" = 1'-0"



H1 ASSUMED NORTH ELEVATION
 1/8" = 1'-0"

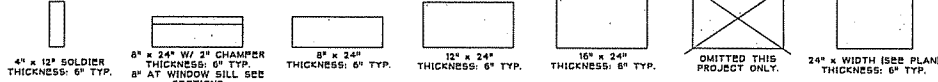


D1 ASSUMED SOUTH ELEVATION
 1/8" = 1'-0"



GRANITE SIGN NOTES:
 1. CUSTOM GC LETTERS VERIFY W/ OWNER TYPE.
 2. SEE SPEC. FOR GRANITE COLOR AND FINISHES.

A1 CAST GRANITE SIGN
 3/4" = 1'-0"



CAST STONE NOTES:
 1. STONE TO BE 2" MIN BELOW F.P. TYP. SEE SECTIONS FOR ALL LOCATIONS.
A5 CAST STONE DETAIL
 3/4" = 1'-0"

- GENERAL NOTES:**
 1. SEE SHEET A202 FOR EIFS SCORING LOCATIONS AND DETAILS.
- REFERENCED CONSTRUCTION NOTES:**
 1. AWNING.
 2. GOOSENECK AWNING DOWN LIGHT.
 3. DECORATIVE LIGHT.
 4. LIGHT POST.
 5. CLEAR PLATE GLASS INSULL.
 6. CYLINDER DOWNUP EXTERIOR WALL SCORCE.
 7. THRU WALL OVERFLOW SCUPPER. SEE ROOF PLAN AS1.
 8. PATIO RAILING SEE A11, PT RAILINGS COLOR 3.
 9. PATIO RAILING GATE SEE A11, PT RAILINGS COLOR 3.
 10. DUMPSTER ENCLOSURE SEE 18/A22
 11. WALL PACK FIXTURE.
 12. NOT USED.
 13. SIGNAGE LETTERING BY AWNING CONTRACTOR.
 14. NOT USED.
 15. FIRE DEPT. STROBE.
 16. FIRE DEPT. ALARM.
 17. SIAMSESE SPRINKLER.
 18. EIFS SCORING. SEE EIFS SCORING ELEVATIONS BELOW.
 19. ILLUMINATED LIGHTED SIGNAGE BY SIGNAGE CONTRACTOR.
 20. CAST STONE. LARGE PIECES, SEE CAST STONE CHART.
 21. BELT COURSE EIFS, COLOR 1, TEXTURE B.
 22. FIELD 1 1/2" EIFS, COLOR 1, TEXTURE B.
 23. CORNER COLUMN 1 1/2" EIFS, COLOR 2, TEXTURE A.
 24. CORNICE EIFS, COLOR 2, TEXTURE B.
 25. FIELD 1" EIFS, COLOR 1, TEXTURE B (NO SCORING).
 26. SHT. MTL. CAP AND SILL FLASHING TO MATCH COLOR OF ADJACENT MATERIAL, SEE COLOR 4.
 27. STONE SIGN.
 28. FIELD BRICK, COLOR 5.
 29. ACCENT BRICK COLOR 5.
 30. BRICK CORBEL ACCENT BAND, COLOR 5.
 31. SOLDIER COURSE ACCENT BAND, COLOR 5.
 32. 1/2" THICK EIFS SILL, COLOR 1, TEXTURE B.
 33. TPO.
 34. WORT ACCESS DOOR BY KES.
 35. 6x6 ACCESS DOOR BY KES.

COLOR AND TEXTURE KEY:
TEXTURES
 A. STOLIT LS
 B. STOLIT LG
COLORS
 1. TO MATCH PAREX, WARM SAND #10432621
 2. TO MATCH PAREX, CANYON DAWN #10449611
 3. ANODIZED BROWN
 4. DENRIDGE SIERRA TAN AT EIFS, AND DENRIDGE TERRA-COTTA AT BRICK.
 5. REDDISH-BROWN BRICK, SEE SPECIFICATIONS.

REVISIONS

Work	Date	Description

PROJ-10

GRANITE CITY FOOD & BREWERY
 MARSHON WEST
 MARSHON, WISCONSIN

EXTERIOR ELEVATIONS

© Copyright 2008
 SJA Architects, Inc.
 All rights reserved

PRELIMINARY NOT FOR CONSTRUCTION

Drawn By: DL
 Checked By: DL
 Job No.: 03192
 Date: 12/11/08

A201